

# RIVER SHORES 2ND ADDITION

TOWNSHIP OF OAK GROVE, COUNTY OF ANOKA

KNOW ALL MEN BY THESE PRESENTS: That S.H. & C. Inc., a Minnesota corporation, owner and proprietor

of the following described property situated in the County of Anoka, State of Minnesota, to-wit:

The North 1/2 of the Southwest 1/4 and that part of the Northwest 1/4 of the Southeast 1/4 lying West of the West shore-line of the Rum River, all in Section 5, Township 33, Range 24 in Anoka County, Minnesota excepting therefrom, the South 660 feet of the West 660 feet of the Northwest 1/4 of the Southwest 1/4 of Section 5, Township 33, Range 24; also excepting a three cornered strip of land lying on the West side of Anoka and St. Francis Road and described as follows: Commencing at the Northeast corner of the Northeast 1/4 of the Southeast 1/4 of Section 6; thence East 12 rods to the center of Anoka and St. Francis Road; thence Southwesterly along said Road to a point 22 rods South of the point of commencement; containing about 1 acre and being part of the Northwest 1/4 of the Southwest 1/4 of Section 5, Township 33, Range 24; excepting and reserving from said tract a strip of land at the Southwest corner of the Northeast 1/4 of the Southwest 1/4 of said section, said strip of land being 1 rod in width, at said corner and extending Easterly 20 rods.

Also: All that portion of the West 1/2 of the Southeast 1/4 of Section 5 lying West of the West shoreline of the Rum River and being in Section 5, Township 33, Range 24.

Have caused the same to be surveyed and platted as RIVER SHORES 2ND ADDITION and do hereby donate and dedicate to the public for public use forever the Road, Avenue Streets, and utility and drainage easements as shown on the plat, also dedicating to the County of Anoka the right of access to the County Road No. 55 from Lot 1, Block 1. In witness whereof said S.H. & C. Inc., a Minnesota corporation, has caused these presents to be signed by its proper officers and its corporate seal to be hereunto affixed this 4<sup>th</sup> day of MARCH 1983.

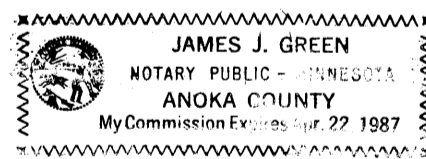
SIGNED:  
S.H. & C. Inc.

Dick Hand  
Dick Hand, president

Anthony Emmerich  
Anthony Emmerich, secretary-treasurer

State of Minnesota  
County of Anoka The foregoing instrument was acknowledged before me this 4<sup>th</sup> day of MARCH 1983, by Dick Hand, president, and Anthony Emmerich, secretary-treasurer of S.H. & C. Inc., a Minnesota corporation on behalf of the corporation.

James J. Green  
Notary Public, Anoka County, Minnesota  
My commission expires \_\_\_\_\_



I hereby certify that I have surveyed and platted the property described on this plat as RIVER SHORES 2ND ADDITION; that this plat is a correct representation of said survey; that the distances are correctly shown on said plat in feet and hundredths of a foot; that all monuments have been correctly placed in the ground as shown on said plat; that the outside boundary lines are correctly designated on said plat; and that there are no wet lands or public highways to be designated other than as shown thereon.

Raymond A. Prasch  
Raymond A. Prasch, Registered Land Surveyor  
Minnesota Registration Number 6743

State of Minnesota  
County of Hennepin The foregoing instrument was acknowledged this 30<sup>th</sup> day of NOVEMBER 1982, by Raymond A. Prasch, Registered Land Surveyor.

Milton E. Hyland  
Milton E. Hyland, Notary Public, Hennepin Co. Minn.  
My Commission Expires November 19, 1987

This annexed plat of RIVER SHORES 2ND ADDITION was approved and accepted by the Town Board of the Township of Oak Grove at a regular meeting held this 6<sup>th</sup> day of DECEMBER 1982.

James P. Deffin Chairman of Town Board  
Carolyn W. Swenson Clerk of Town Board

This annexed plat of RIVER SHORES 2ND ADDITION was approved and accepted by the Board of County Commissioners of the County of Anoka, State of Minnesota at a regular meeting thereof held this 8<sup>th</sup> day of MARCH 1983.

Nick Venaito Vice - Chairman  
John Jay Mc Linden County Administrator

This plat was approved as to form and execution on this 13<sup>th</sup> day of April 1983.

Anthony C. Polumbo  
County Attorney, Anoka County, Minnesota

Recommended for approval this 8<sup>th</sup> day of MARCH 1983.

Paul K. Lund  
Anoka County Highway Engineer

Checked and approved this 8<sup>th</sup> day of MARCH 1983.

Roland M. Anderson  
Anoka County Surveyor

611384

OFFICE OF COUNTY RECORDER  
STATE OF MINNESOTA, COUNTY OF ANOKA  
I hereby certify that the within instrument was filed in this office for record on the APR 14 1983 A.D., 1983 at 2:22 o'clock P.M., and was duly recorded in book 32 of Plat page 67.

Ted J. Amundahl  
County Recorder  
By G. E. Hollerens  
Deputy

MINNESOTA  
SEAL  
S. H. & C. INC.

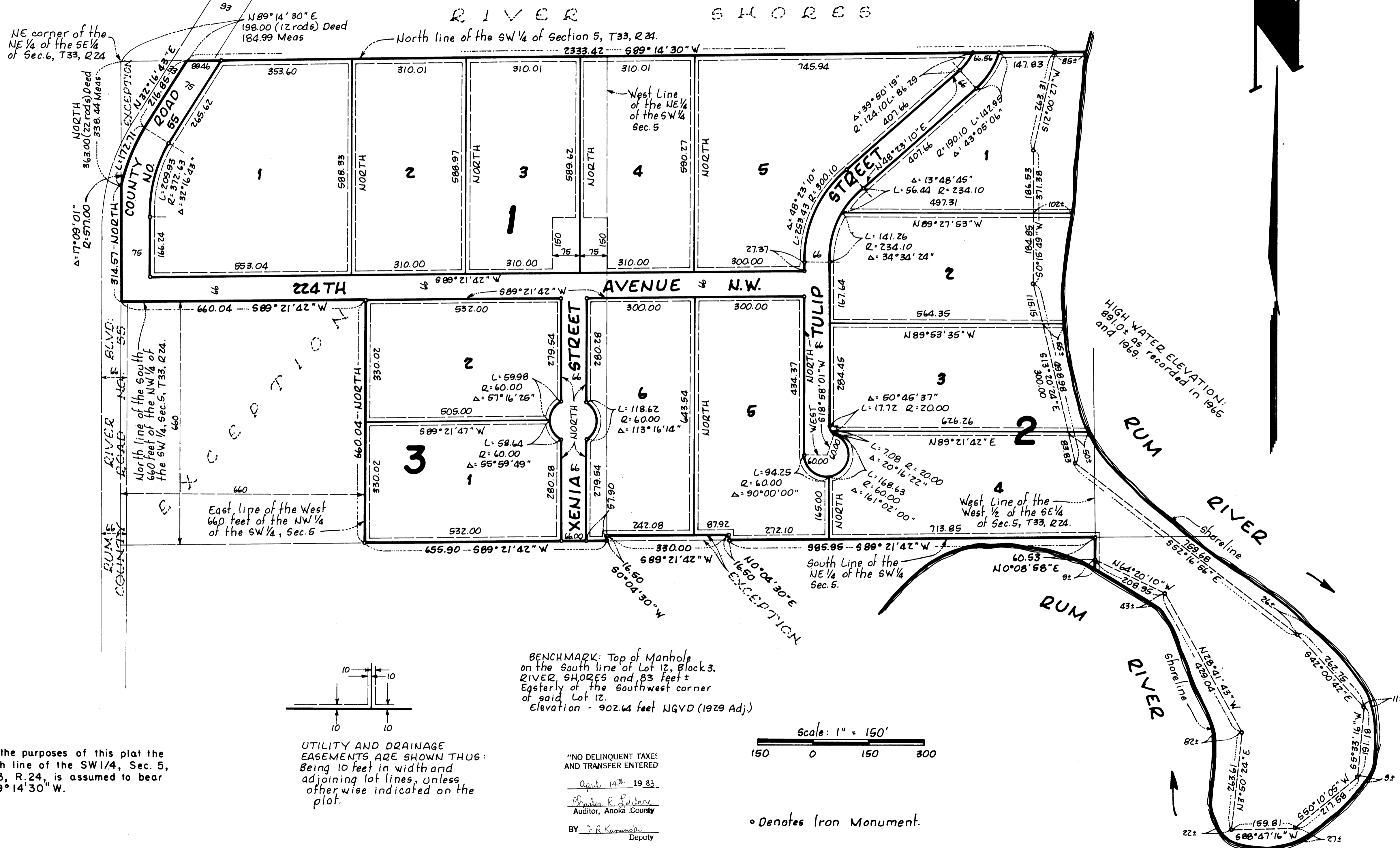
MINNESOTA  
NOTARIAL SEAL

ANOKA COUNTY  
TOWNSHIP OF OAK GROVE

# RIVER SHORES 2ND ADDITION

TOWNSHIP OF OAK GROVE, COUNTY OF ANOKA

**LOT SURVEYS COMPANY**  
LAND SURVEYORS



NE corner of the NE 1/4 of the SE 1/4 of Sec. 6, T33, R24

N 89° 14' 30" E  
198.00 (12 rods) Deed  
184.99 Meas

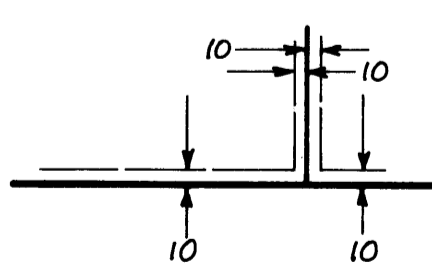
North line of the SW 1/4 of Section 5, T33, R24.

NORTH  
36.300 (22 rods) Deed  
358.44 Meas

North line of the South  
660 feet of the NW 1/4 of  
the SW 1/4, Sec. 5, T33, R24.

East line of the West  
660 feet of the NW 1/4  
of the SW 1/4, Sec. 5

BENCHMARK: Top of Manhole  
on the South line of Lot 12, Block 3,  
RIVER SHORES and 83 feet ±  
Easterly of the Southwest corner  
of said Lot 12.  
Elevation - 902.64 feet NGVD (1929 Adj.)



UTILITY AND DRAINAGE  
EASEMENTS ARE SHOWN THUS:  
Being 10 feet in width and  
adjoining lot lines, unless  
otherwise indicated on the  
plat.

"NO DELINQUENT TAXES  
AND TRANSFER ENTERED"  
April 14<sup>th</sup> 1983  
Auditor, Anoka County  
BY *J. R. K...*  
Deputy

Scale: 1" = 150'  
150 0 150 300

• Denotes Iron Monument.

For the purposes of this plat the  
North line of the SW 1/4, Sec. 5,  
T. 33, R. 24, is assumed to bear  
S 89° 14' 30" W.