

RIVERDALE COMMONS SIXTH ADDITION

CITY OF COON RAPIDS
COUNTY OF ANOKA
SEC. 8, T. 31, R. 24

KNOW ALL PERSONS BY THESE PRESENTS: That Home Depot U.S.A., Inc., a Delaware corporation, owner of the following described property:

Lot 1, Block 2, RIVERDALE COMMONS SECOND ADDITION, Anoka County, Minnesota.

Has caused the same to be surveyed and platted as RIVERDALE COMMONS SIXTH ADDITION and does hereby dedicate to the public for public use the drainage and utility easements as shown on this plat.

In witness whereof said Home Depot U.S.A., Inc., a Delaware corporation, has caused these presents to be signed by its proper officer this 26 day of Sept, 2017.

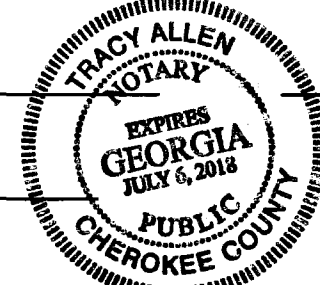
HOME DEPOT U.S.A., INC., a Delaware Corporation

By: Jessica Borgert as Sr. Corporate Counsel
Printed Name

STATE OF GEORGIA
COUNTY OF Cobb

This instrument was acknowledged before me this 26 day of Sept, 2017 by Jessica Borgert as Sr. Corporate Counsel of Home Depot U.S.A., Inc., a Delaware corporation, on behalf of the corporation.

Tracy Allen
Notary Public, Cobb County, Georgia



Tracy Allen
Notary Printed Name

My commission expires 7-6-18

SURVEYOR'S CERTIFICATE

I Brian R. Person do hereby certify that this plat was prepared by me or under my direct supervision; that I am a duly Licensed Land Surveyor in the State of Minnesota; that this plat is a correct representation of the boundary survey; that all mathematical data and labels are correctly designated on this plat; that all monuments depicted on this plat have been, or will be correctly set within one year; that all water boundaries and wet lands, as defined in Minnesota Statutes, Section 505.01, Subd. 3, as of the date of this certificate are shown and labeled on this plat; and all public ways are shown and labeled on this plat.

Dated this 22nd day of September, 2017.

Brian R. Person
Brian R. Person, Licensed Land Surveyor
Minnesota License No. 49138

STATE OF MINNESOTA
COUNTY OF ANOKA

This instrument was acknowledged before me this 22nd day of September, 2017 by Brian R. Person.

Seth M. Monroe
Notary Public, Anoka County, Minnesota.
Notary Printed Name

My commission expires January 31, 2019

COON RAPIDS PLANNING COMMISSION

Be it known that at a meeting held on this 17th day of AUGUST, 2017, the Planning Commission of the City of Coon Rapids, Minnesota, did hereby review and approve this plat of RIVERDALE COMMONS SIXTH ADDITION.

Planning Commission, City of Coon Rapids, Minnesota

By: Wayne Schwatz, Chairperson

City Council, City of Coon Rapids, Minnesota

This plat of RIVERDALE COMMONS SIXTH ADDITION was approved and accepted by the City Council of the City of Coon Rapids, Minnesota at a regular meeting thereof held this 5th day of SEPTEMBER, 2017, and said plat is in compliance with the provisions of Minnesota Statutes, Section 505.03, Subd. 2.

City Council, City of Coon Rapids, Minnesota

By: Greg Koch, Mayor

By: Jan Olymkiel, Clerk

ANOKA COUNTY SURVEYOR

I hereby certify that in accordance with Minnesota Statutes, Section 505.021, Subd. 11, this plat has been reviewed and approved this 11th day of DECEMBER, 2017.

Larry D. Hakim
Larry D. Hakim,
Anoka County Surveyor

ANOKA COUNTY AUDITOR/TREASURER

Pursuant to Minnesota Statutes, Section 505.021, Subd. 9, taxes payable in the year 2017 on the land hereinbefore described have been paid. Also, pursuant to Minnesota Statutes, Section 272.12, there are no delinquent taxes and transfer entered this 11th day of October, 2017.

Jonell M. Sawyer
Jonell M. Sawyer
Property Tax Administrator

By: Ill Patterson, Deputy

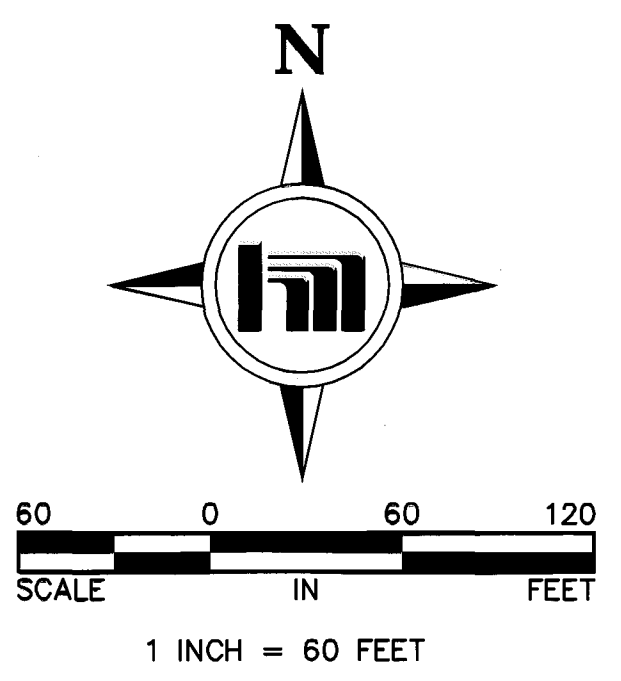
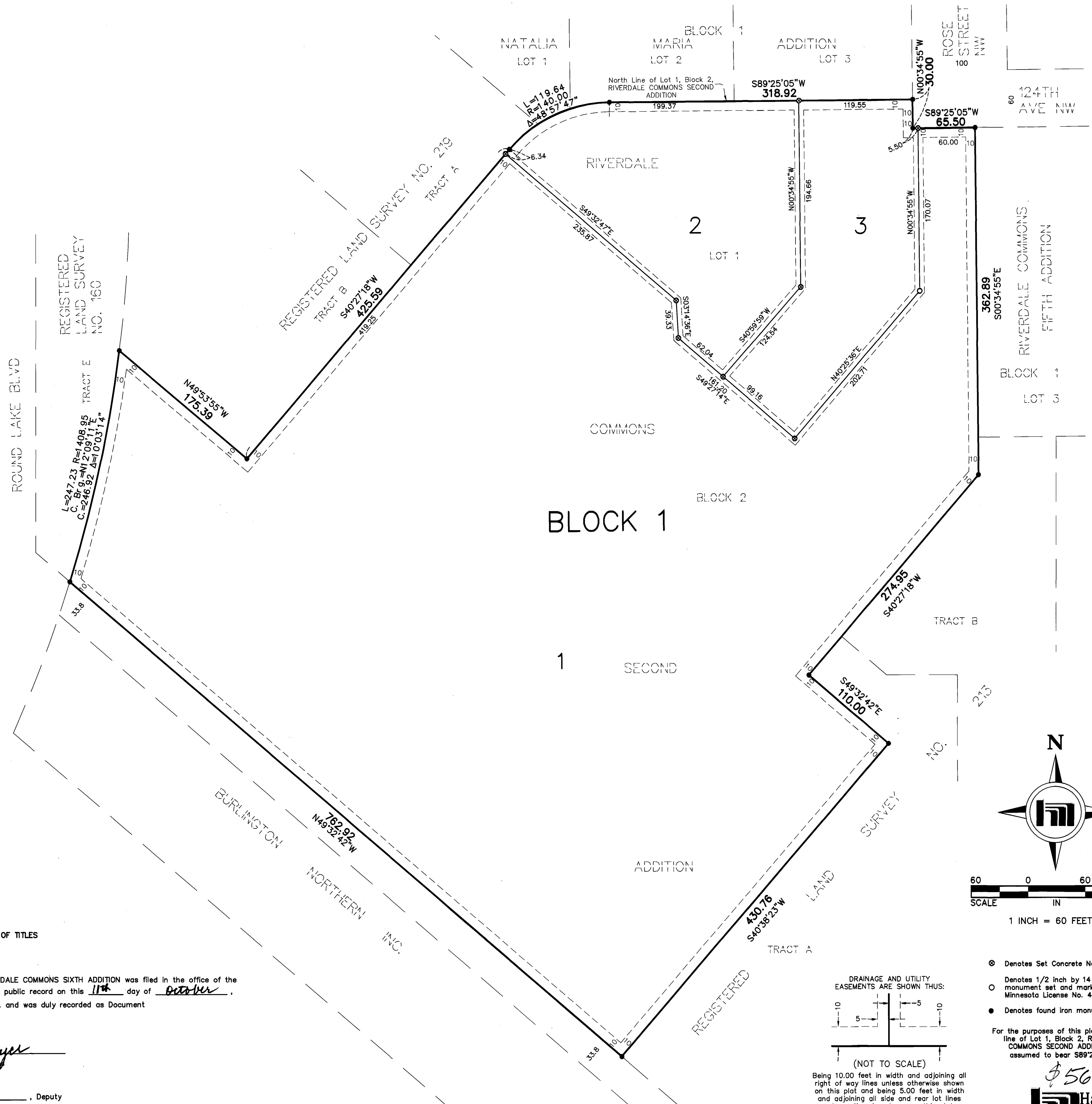
ANOKA COUNTY RECORDER/REGISTRAR OF TITLES

County of Anoka, State of Minnesota

I hereby certify that this plat of RIVERDALE COMMONS SIXTH ADDITION was filed in the office of the County Recorder/Registrar of Titles for public record on this 11th day of October, 2017, at 11:41 o'clock A.M. and was duly recorded as Document Number 552 D 37. 001.

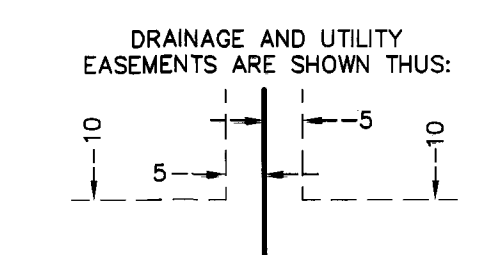
Jonell M. Sawyer
County Recorder/Registrar of Titles

By: Ill Patterson, Deputy



- ⊙ Denotes Set Concrete Nail
- Denotes 1/2 inch by 14 inch iron monument set and marked with Minnesota License No. 49138.
- Denotes found iron monument

For the purposes of this plat the North line of Lot 1, Block 2, RIVERDALE COMMONS SECOND ADDITION, is assumed to bear S89°25'05"W.



Being 10.00 feet in width and adjoining all right of way lines unless otherwise shown on this plat and being 5.00 feet in width and adjoining all side and rear lot lines unless otherwise shown on this plat.

\$5600
Hakanson Anderson