

RIVERDALE STATION APARTMENTS SECOND ADDITION

KNOW ALL PERSONS BY THESE PRESENTS: That Sherman Associates Development LLC, a Minnesota limited liability company, owner of the following described property:

Outlot A, RIVERDALE STATION APARTMENTS, Anoka County, Minnesota.

Has caused the same to be surveyed and platted as RIVERDALE STATION APARTMENTS SECOND ADDITION and does hereby dedicate to the public for public use the drainage and utility easements as shown on this plat.

In witness whereof said Sherman Associates Development LLC, a Minnesota limited liability company, has caused these presents to be signed by its proper officer this 11th day of November, 2021.

Signed: Sherman Associates Development LLC

By: [Signature]
Christopher L. Sherman, President

STATE OF MINNESOTA
COUNTY OF Hennepin

This instrument was acknowledged before me on this 11th day of November, 2021 by Christopher L. Sherman, President of Sherman Associates Development LLC, a Minnesota limited liability company.

[Signature]
(Signature)

LISA M. MERK
(Printed Name)

Notary Public, Hennepin County, Minnesota

My Commission Expires 1-31-2025

I Daniel Ekrem do hereby certify that this plat was prepared by me or under my direct supervision; that I am a duly Licensed Land Surveyor in the State of Minnesota; that this plat is a correct representation of the boundary survey; that all mathematical data and labels are correctly designated on this plat; that all monuments depicted on this plat have been, or will be correctly set within one year; that all water boundaries and wet lands, as defined in Minnesota Statutes, Section 505.01, Subd. 3, as of the date of this certificate are shown and labeled on this plat; and all public ways are shown and labeled on this plat.

Dated this 11th day of November, 2021.

[Signature]
Daniel Ekrem, Licensed Land Surveyor
Minnesota License No. 57366

STATE OF Minnesota
COUNTY OF Hennepin

This instrument was acknowledged before me this 11th day of November, 2021 by Daniel Ekrem.

[Signature]
(Signature)

Joshua Taylor
(Printed Name)

Notary Public, Dakota County, Minnesota

My Commission Expires 1-31-2024

Coon Rapids Planning Commission

Be it known that at a meeting held on this 17 day of June, 2021, the Planning Commission of the City of Coon Rapids, Minnesota, did hereby review and approve this plat of RIVERDALE STATION APARTMENTS SECOND ADDITION.

Planning Commission, City of Coon Rapids, Minnesota

By: [Signature] Chairperson

City Council, City of Coon Rapids, Minnesota

This plat of RIVERDALE STATION APARTMENTS SECOND ADDITION was approved and accepted by the City Council of the City of Coon Rapids, Minnesota at a regular meeting thereof held this 6 day of July, 2021, and said plat is in compliance with the provisions of Minnesota Statutes, Section 505.03, Subd. 2.

City Council, City of Coon Rapids, Minnesota

By: [Signature] By: [Signature]
Jeffery Koch, Mayor Joan Lenzmeier, City Clerk

County Surveyor

I hereby certify that in accordance with Minnesota Statutes, Section 505.021, Subd. 11, this plat has been reviewed and approved this 23rd day of November, 2021.

By: [Signature]
David M. Ziegler
Anoka County Surveyor

County Auditor/Treasurer

Pursuant to Minnesota Statutes, Section 505.021, Subd. 9, taxes payable in the year 2021 on the land hereinbefore described have been paid. Also, pursuant to Minnesota Statutes, Section 272.12, there are no delinquent taxes and transfer entered this 29th day of November, 2021.

[Signature]
Property Tax Administrator
By: [Signature] Deputy

County Recorder/Registrar of Titles
County of Anoka, State of Minnesota

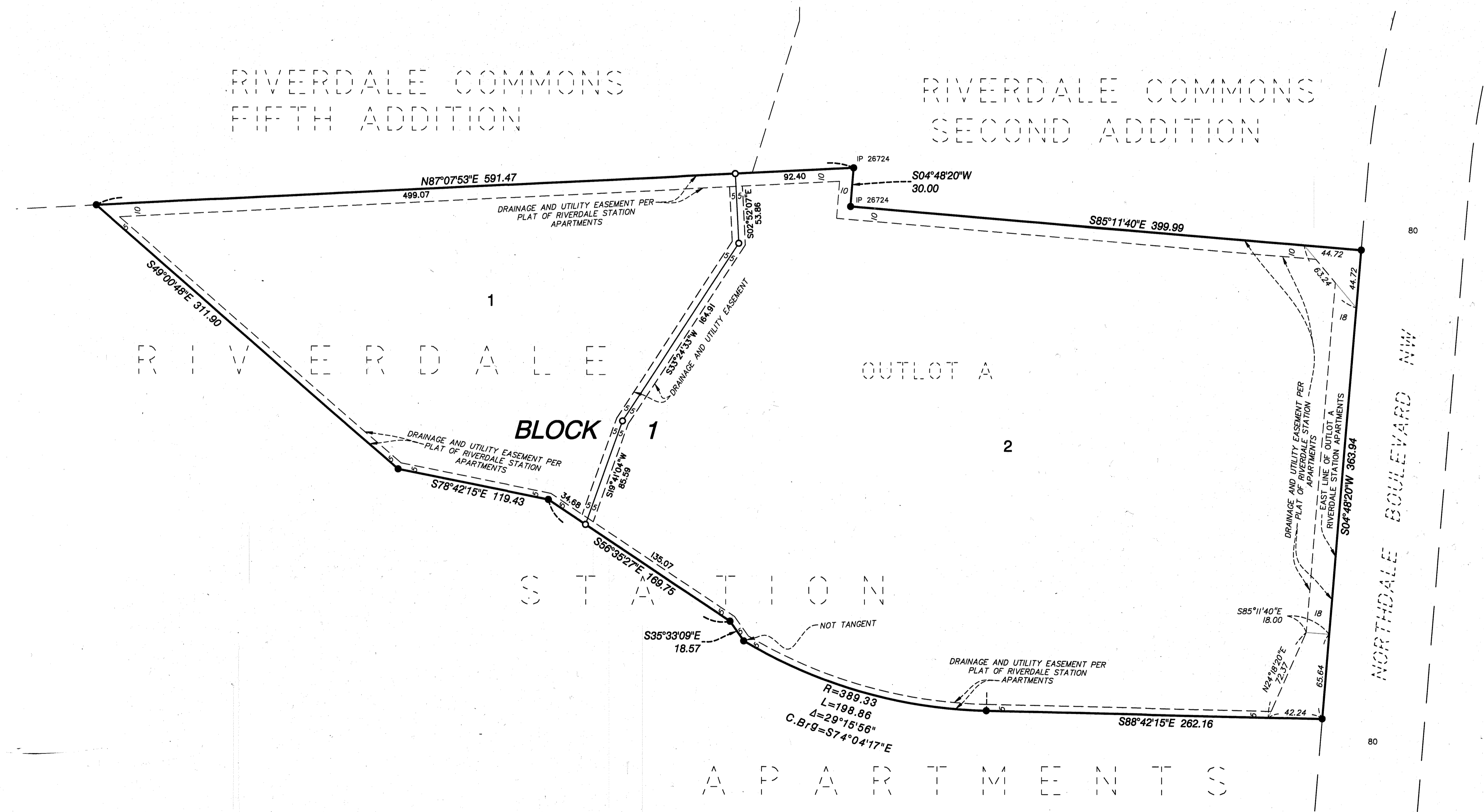
I hereby certify that this plat of RIVERDALE STATION APARTMENTS SECOND ADDITION was filed in the office of the County Recorder/Registrar of Titles for public record on this 23rd day of November, 2021, at 11:25 o'clock A. M. and was duly recorded as Document Number 595631.001.

[Signature]
County Recorder/Registrar of Titles
By: [Signature] Deputy

#56.00



RIVERDALE STATION APARTMENTS SECOND ADDITION



THE EAST LINE OF OUTLOT A, RIVERDALE STATION APARTMENTS IS ASSUMED TO HAVE A BEARING OF $S04^{\circ}48'20''W$.

- Denotes 1/2 inch by 18 inch iron pipe monument found marked by license no. 18425 unless otherwise shown
- Denotes 1/2 inch by 18 inch iron pipe monument set marked by license no. 57366 unless otherwise shown

