

RIVERDALE STATION APARTMENTS

KNOW ALL PERSONS BY THESE PRESENTS: That Anoka County Regional Railroad Authority, a political subdivision under the laws of the State of Minnesota, owner of the following described property:
Tract A, Registered Land Survey No. 209, Anoka County, Minnesota.

Has caused the same to be surveyed and platted as RIVERDALE STATION APARTMENTS and does hereby dedicate to the public for public use the drainage and utility easements as shown on this plat.

In witness whereof said Anoka County Regional Railroad Authority, a political subdivision under the laws of the State of Minnesota, has caused these presents to be signed by its proper officers this 26th day of March, 2018.

Signed: Anoka County Regional Railroad Authority

By: [Signature]
Matt Look, Chair

By: [Signature]
Dee Guthman, Executive Director

STATE OF MINNESOTA
COUNTY OF Anoka

This instrument was acknowledged before me on this 26th day of March, 2018 by Matt Look, Chair of Anoka County Regional Railroad Authority, a political subdivision under the laws of the State of Minnesota, on behalf of the political subdivision.

[Signature]
Jill M. Rykhus



Notary Public, Anoka County, Minnesota
My Commission Expires 1-31-19

STATE OF MINNESOTA
COUNTY OF Anoka

This instrument was acknowledged before me on this 26th day of March, 2018 by Dee Guthman, Executive Director of Anoka County Regional Railroad Authority, a political subdivision under the laws of the State of Minnesota, on behalf of the political subdivision.

[Signature]
Jill M. Rykhus



Notary Public, Anoka County, Minnesota
My Commission Expires 1-31-19

I Peter Goers do hereby certify that this plat was prepared by me or under my direct supervision; that I am a duly Licensed Land Surveyor in the State of Minnesota; that this plat is a correct representation of the boundary survey; that all mathematical data and labels are correctly designated on this plat; that all monuments depicted on this plat have been, or will be correctly set within one year; that all water boundaries and wet lands, as defined in Minnesota Statutes, Section 505.01, Subd. 3, as of the date of this certificate are shown and labeled on this plat; and all public ways are shown and labeled on this plat.

Dated this 12th day of MARCH, 2018.

[Signature]
Peter Goers, Licensed Land Surveyor
Minnesota License No. 44110

STATE OF MINNESOTA
COUNTY OF HENNEPIN

This instrument was acknowledged before me this 12th day of MARCH, 2018 by Peter Goers.

[Signature]
Daniel P. Ekrom

Notary Public, Dakota County, Minnesota
My Commission Expires 1-31-19

Coon Rapids Planning Commission

Be it known that at a meeting held on this 15th day of June, 2017, the Planning Commission of the City of Coon Rapids, Minnesota, did hereby review and approve this plat of RIVERDALE STATION APARTMENTS.

Planning Commission, City of Coon Rapids, Minnesota
By: [Signature] Chairperson

City Council, City of Coon Rapids, Minnesota

This plat of RIVERDALE STATION APARTMENTS was approved and accepted by the City Council of the City of Coon Rapids, Minnesota at a regular meeting thereof held this 21st day of November, 2017, and said plat is in compliance with the provisions of Minnesota Statutes, Section 505.03, Subd. 2.

City Council, City of Coon Rapids, Minnesota
By: [Signature] Jerry Koch, Mayor By: [Signature] Josh Lenzmeier, City Clerk

County Surveyor

I hereby certify that in accordance with Minnesota Statutes, Section 505.021, Subd. 11, this plat has been reviewed and approved this 2nd day of April, 2018.

By: [Signature]
Larry D. Heilmann Charles F. Gitzen
Anoka County Surveyor

County Auditor/Treasurer

Pursuant to Minnesota Statutes, Section 505.021, Subd. 9, taxes payable in the year 2018 on the land hereinbefore described have been paid. Also, pursuant to Minnesota Statutes, Section 272.12, there are no delinquent taxes and transfer entered this 2 day of April, 2018.

[Signature]
Sonell M. Sawyer
Property Tax Administrator

By: [Signature], Deputy

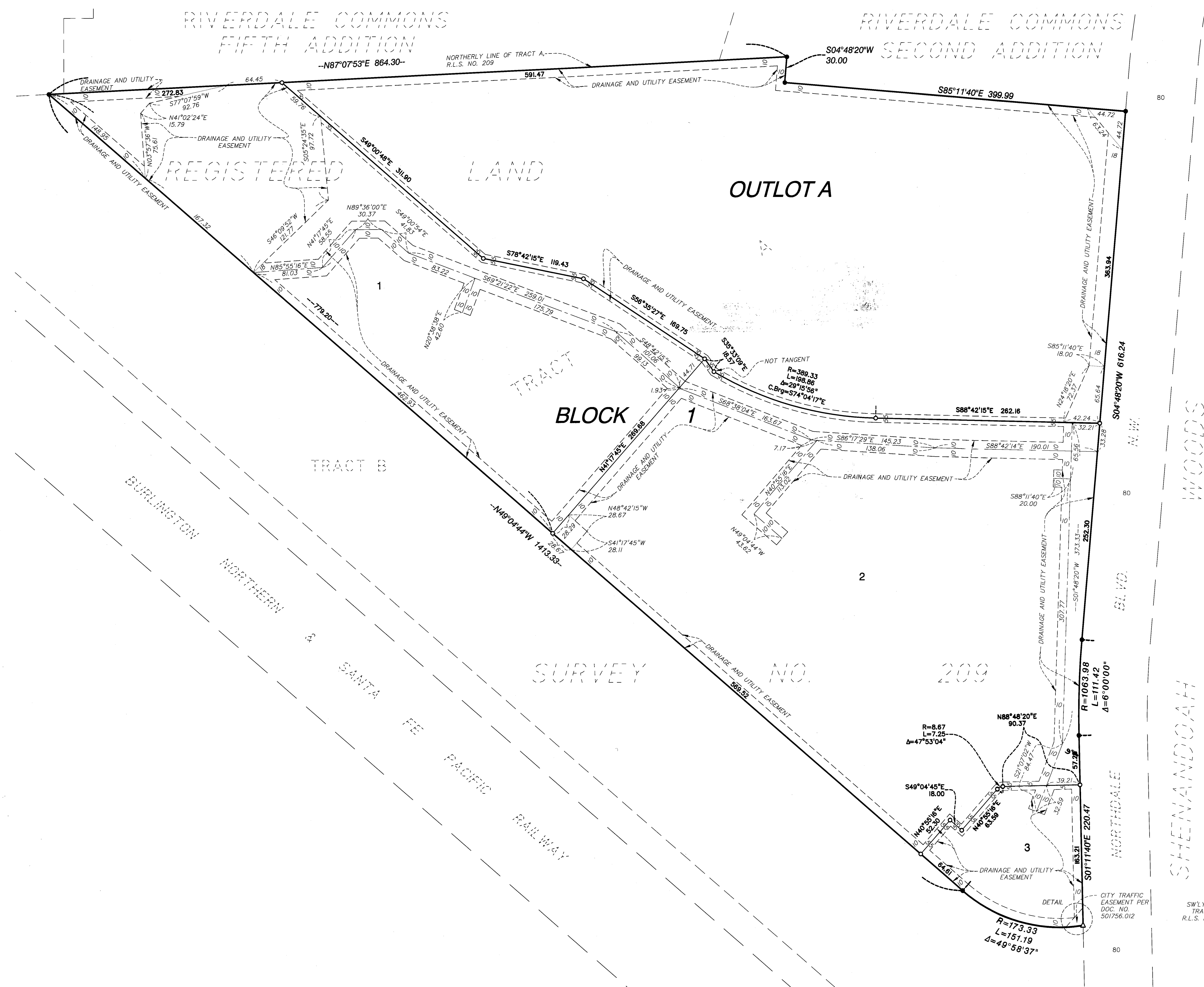
County Recorder/Registrar of Titles
County of Anoka, State of Minnesota

I hereby certify that this plat of RIVERDALE STATION APARTMENTS was filed in the office of the County Recorder/Registrar of Titles for public record on this 2 day of April, 2018, at 10:14 o'clock A.M. and was duly recorded as Document Number 555832.002

[Signature]
Sonell M. Sawyer
County Recorder/Registrar of Titles

By: [Signature], Deputy

RIVERDALE STATION APARTMENTS



THE NORTHERLY LINE OF TRACT A, REGISTERED LAND SURVEY NUMBER 209 IS ASSUMED TO HAVE A BEARING OF N87°07'53"E.

- Denotes monument found 1/2 inch iron pipe
- Denotes 1/2 inch x 18 inch iron monument set marked by license no. 44110 unless otherwise shown
- ▲ Denotes set nail marked by license no. 44110 unless otherwise shown

