

RIVERDALE VILLAGE 6TH ADDITION

BK 19 of TORN, P. 10 CITY OF COON RAPIDS,
COUNTY OF ANOKA, MN.
SEC. 5, T. 31, R. 24

KNOW ALL MEN BY THESE PRESENTS: That CRRV Central LLC, a Delaware limited liability company, fee owner and National City Bank, a national banking association, mortgagee of the following described property situated in the County of Anoka, State of Minnesota, to wit:

Lots 1 and 3, Block 2, RIVERDALE VILLAGE 5TH ADDITION, according to the recorded plat thereof, Anoka County, Minnesota.

Have caused the same to be surveyed and platted as RIVERDALE VILLAGE 6TH ADDITION and do hereby donate and dedicate to the public for public use forever easements for drainage and easements for drainage and utility purposes only, as shown on the plat.

In witness whereof said CRRV Central LLC, a Delaware limited liability company, has caused these presents to be signed by its proper officer this 9th day of December, 2003.

CRRV Central LLC

By Developers Diversified Realty Corporation,
Its Managing Member

By Juan U. Allgood
JOAN U ALLGOOD

its: Senior Vice President

STATE OF Ohio
COUNTY OF Cuyahoga

The foregoing instrument was acknowledged before me this 9th day of December, 2003, by Juan U. Allgood as Senior Vice President of Developers Diversified Realty Corporation, an Ohio corporation, as managing member of CRRV Central LLC, a Delaware limited liability company, on behalf of the company.

JERRY M. CINCYNATUS, Attorney at Law
Notary Public, State of Ohio
My commission has no expiration date.
Section 147.03 O.R.C.

[Signature]
Notary Public, Cuyahoga County, Ohio
My Commission Expires _____

In witness whereof said National City Bank, a National Banking Association, has caused these presents to be signed by its proper officer this 19 day of December, 2003.

NATIONAL CITY BANK

By [Signature]

its _____

STATE OF Ohio
COUNTY OF CUYAHOGA

The foregoing instrument was acknowledged before me this 19 day of DECEMBER, 2003, by David Olenik as Senior Vice President of National City Bank, a National Banking Association, on behalf of the association.

[Signature]
Notary Public, _____ County, _____
My Commission Expires _____

I hereby certify that I have surveyed and platted the property described on this plat as RIVERDALE VILLAGE 6TH ADDITION; that this plat is a correct representation of the survey; that all distances are correctly shown on the plat in feet and hundredths of a foot; that all monuments have been correctly placed in the ground as shown; and that the outside boundary lines are correctly designated on the plat; and that there are no wet lands as defined in Minnesota Statutes 505.02, Subdivision 1, or public highways to be designated on the plat other than as shown thereon.

[Signature]
Martin J. Weber, Land Surveyor
Minnesota License No. 12043

STATE OF MINNESOTA
COUNTY OF HENNEPIN

The foregoing Surveyor's Certificate was acknowledged before me this 1ST day of DECEMBER, 2003 by Martin J. Weber, Land Surveyor.



[Signature]
Notary Public, HENNEPIN County, Minnesota
My Commission Expires JANUARY 31, 2006

COON RAPIDS, MINNESOTA

This plat of RIVERDALE VILLAGE 6TH ADDITION was approved by the Planning Commission of the City of Coon Rapids, Minnesota, this 17th day of February, 1999.

PLANNING COMMISSION OF COON RAPIDS, MINNESOTA

By Donna M. Naewe

COON RAPIDS, MINNESOTA

This plat of RIVERDALE VILLAGE 6TH ADDITION was approved and accepted by the City Council of Coon Rapids, Minnesota, at a regular meeting thereof held this 11th day of September, 2003. If applicable, the written comments and recommendations of the Commissioner of Transportation and the County Highway Engineer have been received by the City or the prescribed 30 day period has elapsed without receipt of such comments and recommendations, as provided by Minnesota Statutes, Section 505.03, Subdivision 1.

CITY COUNCIL OF COON RAPIDS, MINNESOTA

By [Signature]
Mayor

By Jean R. Anderson
Clerk



This plat has been checked and approved this 22ND day of APRIL, 2004.

By [Signature]
Anoka County Surveyor

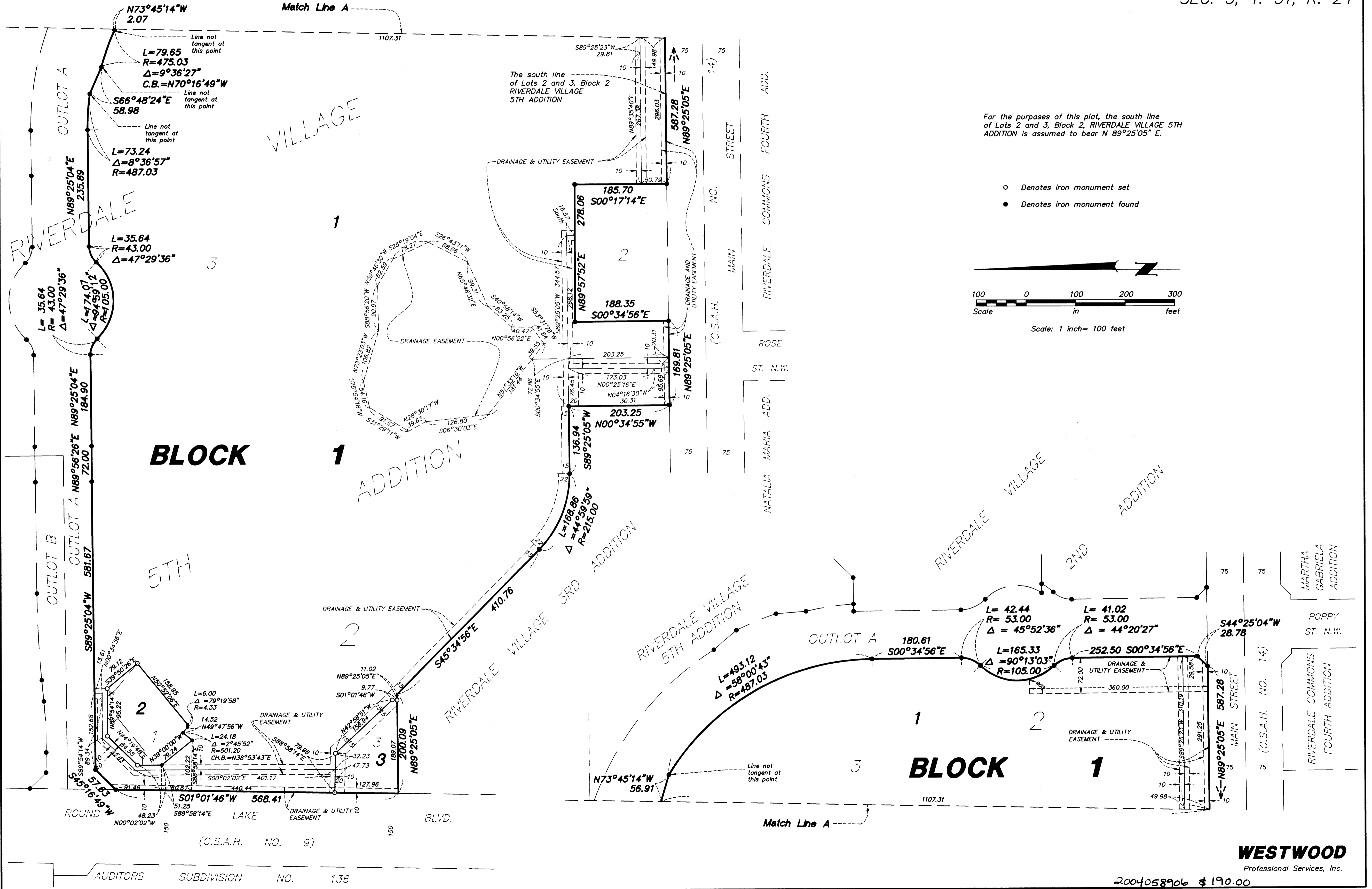
Office of RECORDS & TITLES
STATE OF MINNESOTA
COUNTY OF HENNEPIN
464518.0
I hereby certify that the within instrument was filed in this office on April 22, 2004 at 3:35 o'clock P.M.
Maureen J. Devine, Notary Public in Title
By GKE
Deputy Registrar of Titles

I HEREBY CERTIFY THAT THE CURRENT AND DELINQUENT TAXES ON THE LANDS DESCRIBED WITHIN ARE PAID AND THE TRANSFER IS ENTERED April 22, 2004
MAUREEN J. DEVINE
PROPERTY TAX ADMINISTRATOR
By [Signature]
DEPUTY PROPERTY TAX ADMINISTRATOR

WESTWOOD
Professional Services, Inc.

2004058906 \$190.00

RIVERDALE VILLAGE 6TH ADDITION



For the purposes of this plat, the south line of Lots 2 and 3, Block 2, RIVERDALE VILLAGE 5TH ADDITION is assumed to bear N 89°25'05" E.

- Denotes iron monument set
- Denotes iron monument found

