

# RIVERPARK TOWN HOMES

CITY OF ANOKA  
COUNTY OF ANOKA

KNOWN ALL MEN BY THESE PRESENTS: That T.S.M. Development, Inc., a Minnesota corporation, owner, and Marquette Bank, N. A., mortgagee, of the following described property situated in the County of Anoka, State of Minnesota, to wit:

Outlot H, CUTTERS GROVE 1ST ADDITION, Anoka County, Minnesota.

Have caused the same to be surveyed and platted as RIVERPARK TOWN HOMES and do hereby donate and dedicate to the public for public use forever the easements as shown on this plat for drainage and utility purposes only.

In witness whereof said T.S.M. Development, Inc. a Minnesota corporation, has caused these presents to be signed by its proper officer this 22 day of January, 1997.

Signed: T.S.M. Development, Inc.

By St. Adams It's President

In witness whereof said Marquette Bank, N. A., has caused these presents to be signed by its proper officers this 14 day of January, 1997.

Signed: Marquette Bank, N. A.

By Pat Fagan It's Vice President

STATE OF MINNESOTA  
COUNTY OF Anoka

The foregoing instrument was acknowledged before me this 20th day of January, 1997, by Steven A. Schmitt, as President of T.S.M. Development, Inc., a Minnesota corporation on behalf of the corporation.

MALCOLM B. ALLEN, JR.  
NOTARY PUBLIC - MINNESOTA  
My Comm. Exp. Jan. 31, 2000

Notary Public, Anoka County, Minnesota  
My Commission expires January 31, 2000

STATE OF MINNESOTA  
COUNTY OF HENNEPIN

The foregoing instrument was acknowledged before me this 14th day of JANUARY, 1996, by Dennis M. Kudak, as Vice President and by Pat Fagan, as Vice President of Marquette Bank, N. A., on behalf of the association.

Notary Public, Anoka County, Minnesota  
My Commission expires Jan. 31, 2000

I, Walter J. Gregory, hereby certify that I have surveyed and platted the property described on this plat as RIVERPARK TOWN HOMES, that this plat is a correct representation of the survey, that all distances are correctly shown on the plat in feet and hundredths of a foot, that all monuments have been correctly placed in the ground as shown, that the outside boundary lines are correctly designated on the plat and that there are no wetlands or public highways to be designated other than as shown.

Walter J. Gregory  
Walter J. Gregory, Land Surveyor  
Minnesota License No. 14889

STATE OF MINNESOTA  
COUNTY OF HENNEPIN

The foregoing Surveyor's Certificate by Walter J. Gregory, Minnesota License No. 14889, was acknowledged before me this 8th day of January, 1997.

JOYCE C. HOLM  
NOTARY PUBLIC - MINNESOTA  
My Comm. Expires Jan. 31, 2000

Notary Public, Hennepin County, Minnesota  
My Commission expires Jan. 31, 2000

ANOKA, MINNESOTA

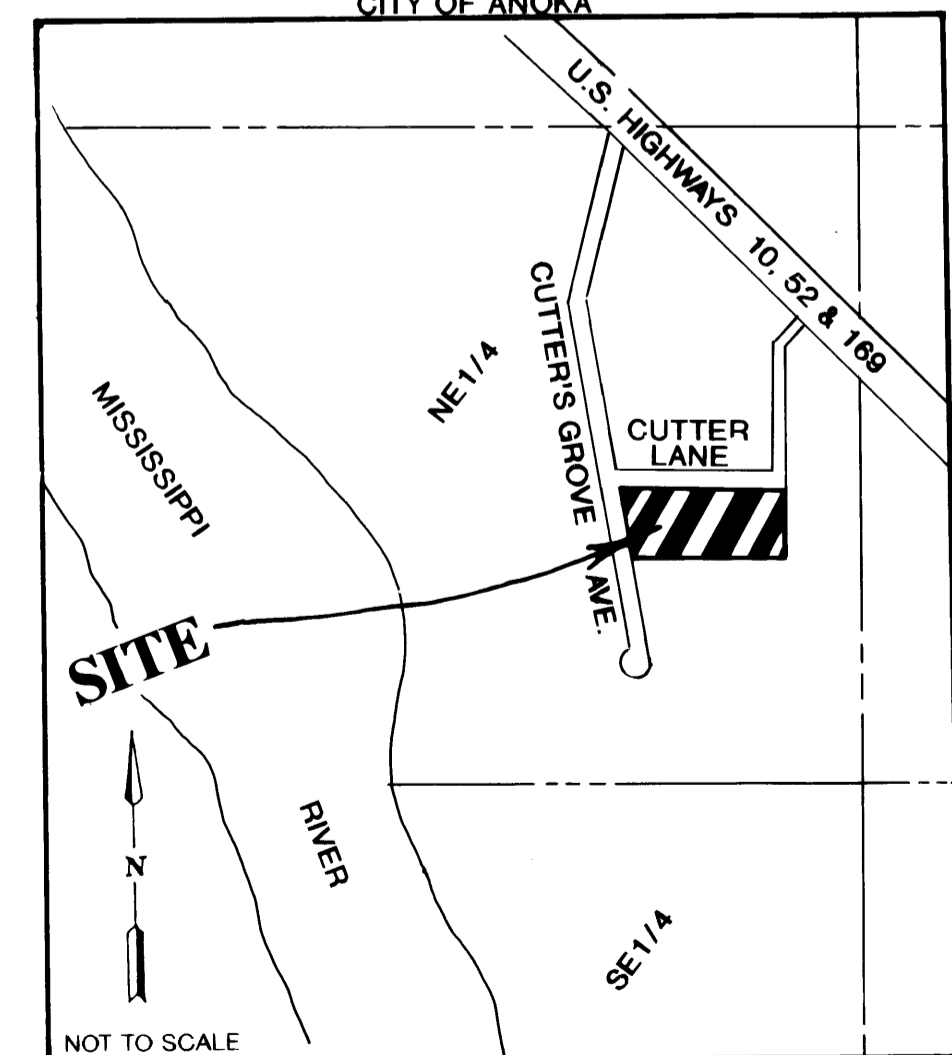
This plat of RIVERPARK TOWN HOMES was approved and accepted by the City Council of Anoka, Minnesota, at a regular meeting thereof held this 18th day of November A.D., 1996. If applicable, the written comments and recommendations of the Commissioner of Transportation and the County Highway Engineer have been received by the City or the prescribed 30 day period has elapsed without receipt of such comments and recommendations, as provided by Minnesota Statutes, Section 505.03, Subd. 2.

CITY COUNCIL OF ANOKA, MINNESOTA  
By Pete M. Beber Mayor  
By Mark Nagel City Manager

This plat has been checked and approved this 20th day of Feb, 1997.

By Merlyn D. Anderson  
Merlyn D. Anderson  
Anoka County Surveyor

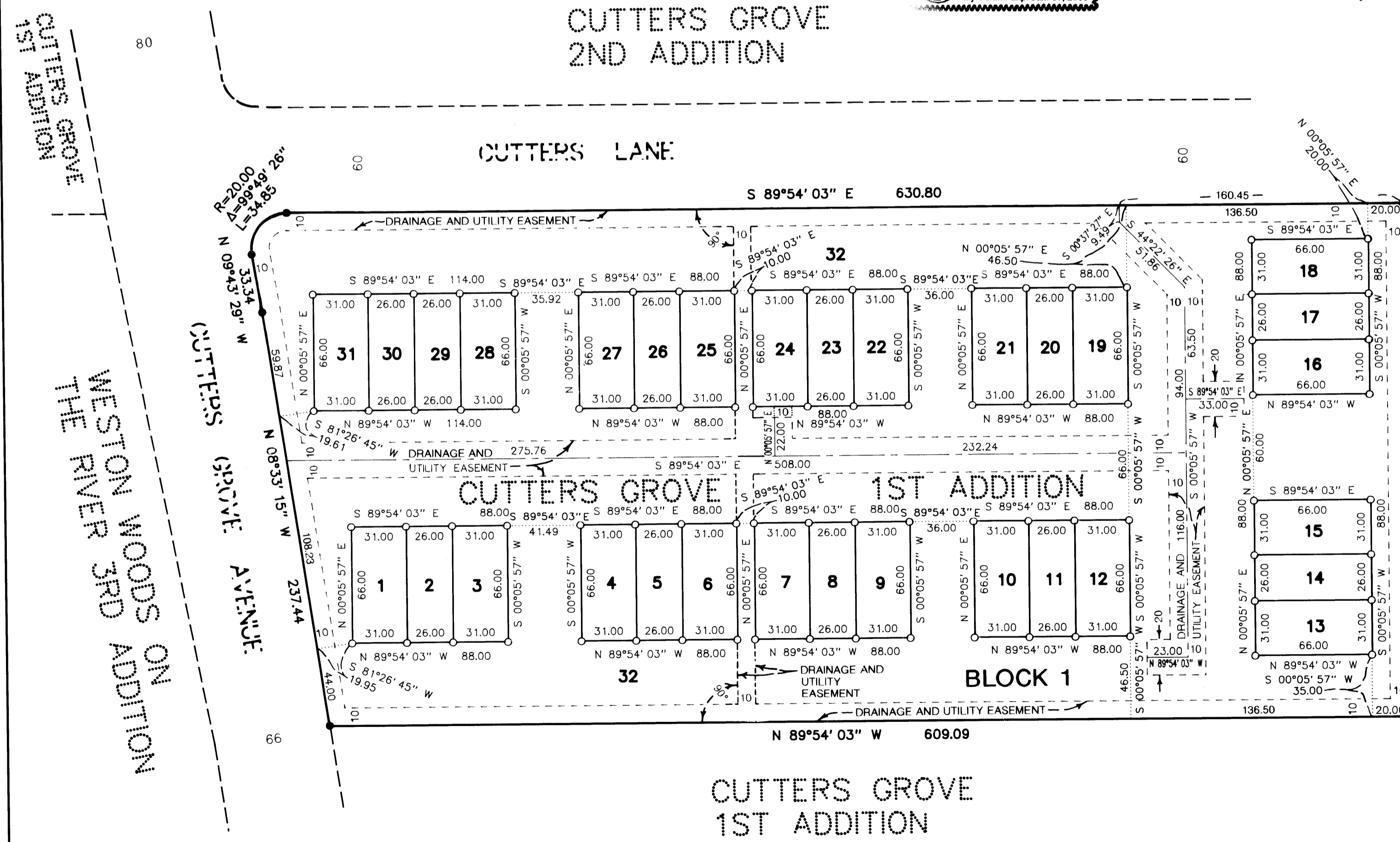
## LOCATION MAP



Doc 1264983  
OFFICE OF COUNTY RECORDER  
STATE OF MINNESOTA, COUNTY OF ANOKA  
I hereby certify that the within instrument was filed in this office for record on the 20th of Feb A.D., 1997 at 11:20 o'clock A.M., and was duly recorded in book 84 page 10.

By Edward M. Trebbe  
County Recorder

By JTG



REVISED WHITE  
OAK MANOR

- DENOTES IRON MONUMENT FOUND.
- DENOTES 1/2 INCH IRON MONUMENT SET WITH CAP STAMPED RLS 14889.

I HEREBY CERTIFY THAT THE CURRENT AND PREVIOUS PLATS ON THE ABOVE DESCRIBED PROPERTY ARE PAID AND THE NUMBER IS  
ENTERED Feb. 20, 1997  
BY J. Culver  
DEPUTY PROPERTY TAX ADMINISTRATOR

NOT TO SCALE  
**MERILA & ASSOCIATES**  
ENGINEERING SURVEYING PLANNING