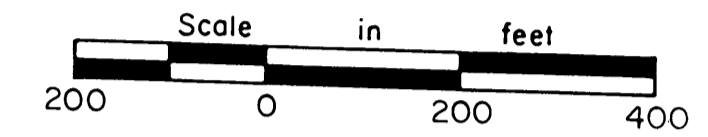
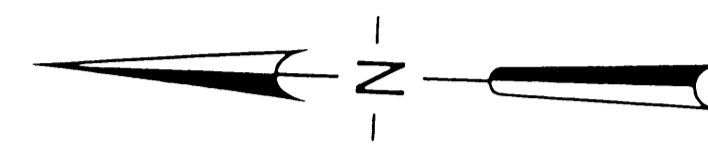
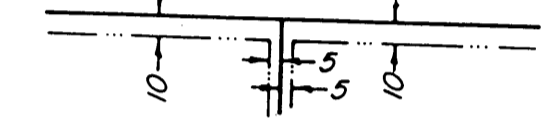


RIVER'S BEND

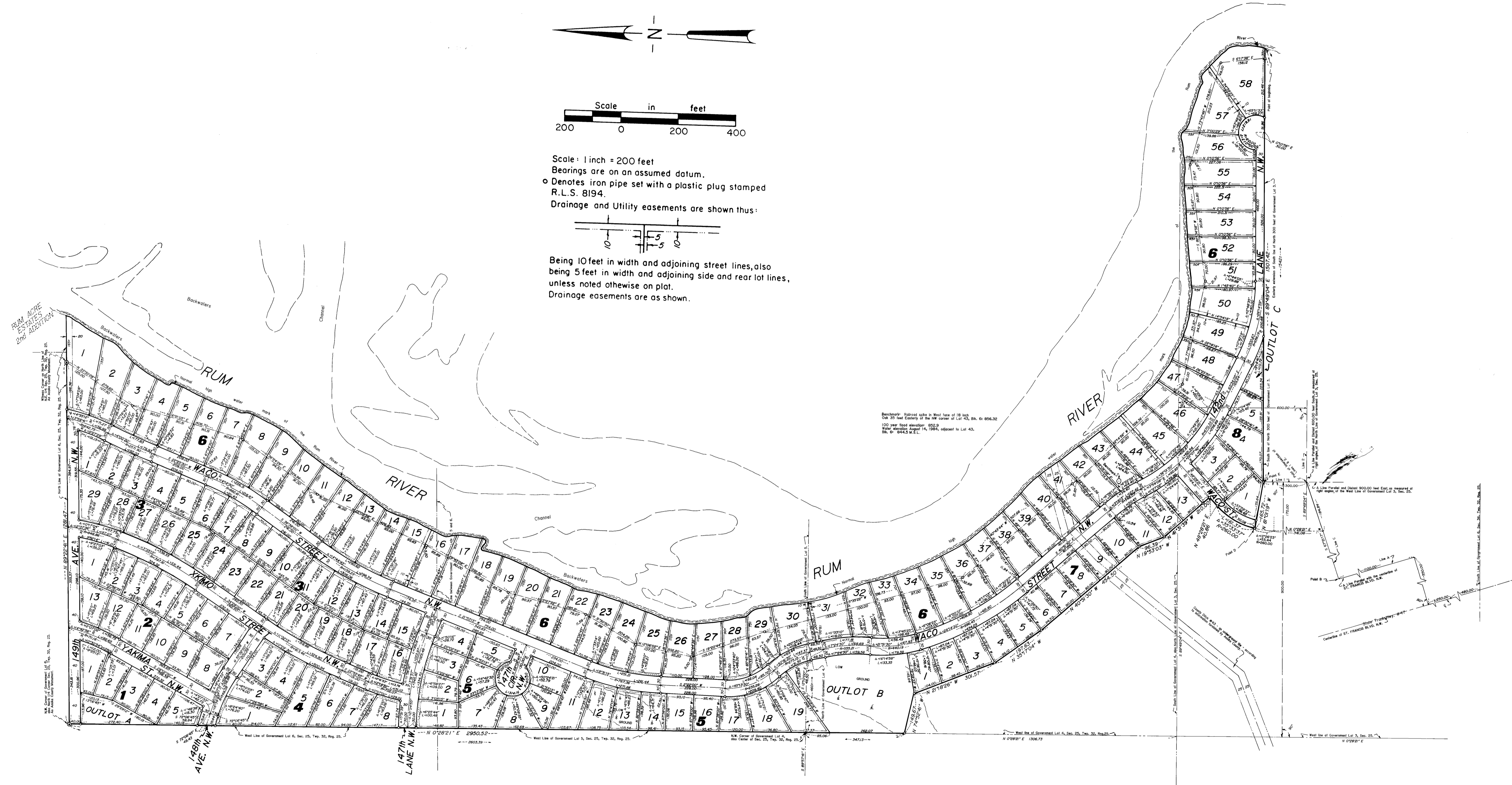
CITY OF RAMSEY,
ANOKA COUNTY, MN.



Scale: 1 inch = 200 feet
 Bearings are on an assumed datum.
 ○ Denotes iron pipe set with a plastic plug stamped R.L.S. 8194.
 Drainage and Utility easements are shown thus:



Being 10 feet in width and adjoining street lines, also being 5 feet in width and adjoining side and rear lot lines, unless noted otherwise on plat.
 Drainage easements are as shown.



Beaverbrook - Railroad bridge in West face of 18 feet
 Oak 20 feet East of the NW corner of Lot 43, Blk. 61 856.32
 100 year flood elevation: 852.3
 Water elevation August 14, 1984, adjacent to Lot 43,
 Blk. 61 844.2 W.E.L.

JOHN OLIVER & ASSOC INC.	LAND
	SURVEYORS
	Elk River, Minn.