

RIVERS EDGE 6TH ADDITION

2392021.001

City of St. Francis
County of Anoka
Sec. 32, Twp. 34, Rng. 24

KNOW ALL PERSONS BY THESE PRESENTS: That St. Francis Land Development, LLC, a Minnesota limited liability company, owner of the following described property:

Outlot B, RIVERS EDGE 5TH ADDITION, Anoka County, Minnesota, according to the record plat thereof.

Has caused the same to be surveyed and platted as RIVERS EDGE 6TH ADDITION and does hereby dedicate to the public for public use the public way and the drainage and utility easements as created by this plat.

In witness whereof said St. Francis Land Development, LLC, a Minnesota limited liability company, has caused these presents to be signed by its proper officer this MAY day of MAY 20 23.

St. Francis Land Development, LLC

Dale Willey (Signature)

Dale Willey (Name Printed)
President

STATE OF Minnesota
COUNTY OF Carver

This instrument was acknowledged before me on May 23, 2023 by

Dale Willey, President of St. Francis Land Development, LLC, a Minnesota limited liability company.

Abigail Broecker (Signature) Abigail Broecker (Name Printed)

Notary Public, Carver County, Minnesota

My Commission Expires 1/31/2028

SURVEYORS CERTIFICATION

I Gary J. Bjorklund do hereby certify that this plat was prepared by me or under my direct supervision; that I am a duly Licensed Land Surveyor in the State of Minnesota; that this plat is a correct representation of the boundary survey; that all mathematical data and labels are correctly designated on this plat; that all monuments depicted on this plat have been, or will be correctly set within one year; that all water boundaries and wet lands, as defined in Minnesota Statutes, Section 505.01, Subd. 3, as of the date of this certificate are shown and labeled on this plat; and all public ways are shown and labeled on this plat.

Dated this 16 day of MAY, 20 23.

Gary J. Bjorklund
Gary J. Bjorklund, Licensed Land Surveyor
Minnesota License No. 46563

STATE OF FLORIDA
COUNTY OF Manatee

This instrument was acknowledged before me on this 16th day of May, 20 23 by Gary J. Bjorklund.

Barry W. Dargle (Signature) Barry W. Dargle (Name Printed)

Notary Public, Manatee County, Florida

My Commission Expires 11-14-2024

CITY COUNCIL, CITY OF ST. FRANCIS, MINNESOTA

This plat of RIVERS EDGE 6TH ADDITION was approved and accepted by the City Council of the City of St. Francis, Minnesota at a regular meeting thereof held this 6 day of June, 20 23, and said plat is in compliance with the provisions of Minnesota Statutes, Section 505.03, Subd. 2.

City Council, City of St. Francis, Minnesota

By: Jennifer Wida (Signature) Jennifer Wida (Name Printed)
Mayor

COUNTY SURVEYOR

I hereby certify that in accordance with Minnesota Statutes, Section 505.021, Subd. 11, this plat has been reviewed and approved this 6th day of June, 20 23.

By: David M. Zieglmeier (Signature)
David M. Zieglmeier
Anoka County Surveyor

COUNTY AUDITOR/TREASURER

Pursuant to Minnesota Statutes, Section 505.021, Subd. 9, taxes payable in the year 20 23 on the land hereinbefore described have been paid. Also, pursuant to Minnesota Statutes, Section 272.12, there are no delinquent taxes and transfer entered this 6 day of June, 20 23.

PAMELA J. LEBLANC
Property Tax Administrator

By: Jessie Mullen (Signature) Deputy

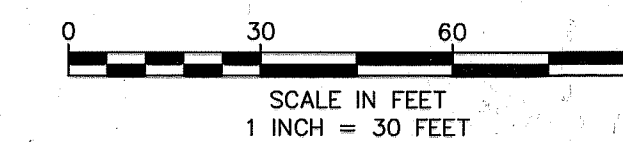
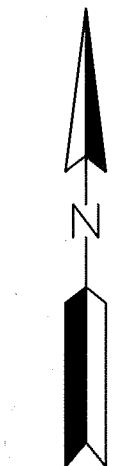
COUNTY RECORDER/REGISTRAR OF TITLES

County of Anoka, State of Minnesota

I hereby certify that this plat of RIVERS EDGE 6TH ADDITION was filed in the office of the County Recorder/Registrar of Titles for public record on this 6 day of June, 20 23, at 12:16 o'clock P.M. and was duly recorded as Document Number 2392021.001.

PAMELA J. LEBLANC
County Recorder/Registrar of Titles

By: Jessie Mullen (Signature) Deputy



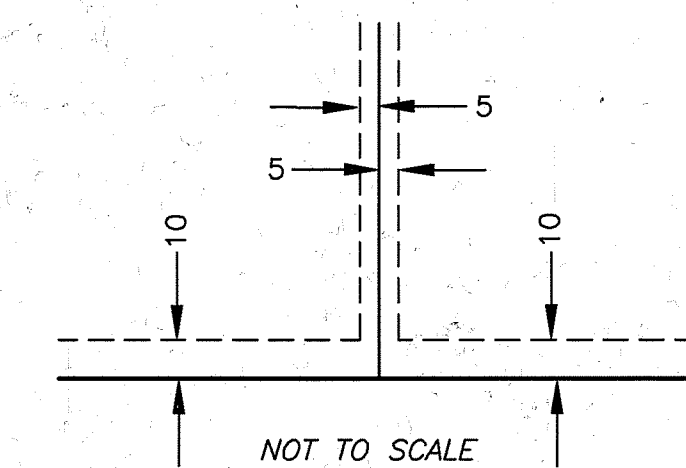
BEARING ORIENTATION NOTE:

THE NORTH LINE OF OUTLOT B, RIVERS EDGE 5TH ADDITION, IS ASSUMED TO BEAR S89°55'41"E.

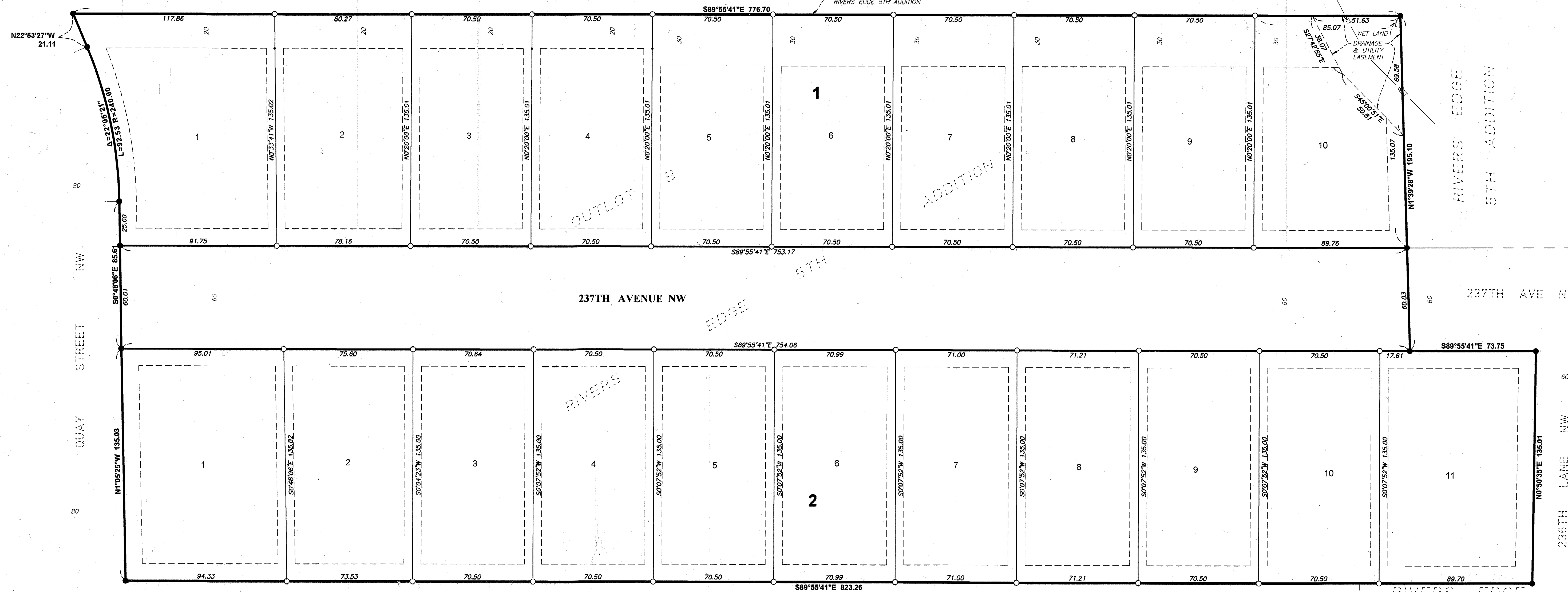
LEGEND

- DENOTES 1/2 INCH BY 14 INCH IRON PIPE MONUMENT FOUND
- DENOTES 1/2 INCH BY 14 INCH IRON PIPE MONUMENT SET WITH PLASTIC CAP MARKED RLS NO. 46563
- WET — DENOTES WET LAND

DRAINAGE AND UTILITY EASEMENTS ARE SHOWN THUS:



BEING 5 FEET IN WIDTH AND ADJOINING SIDE LOT LINES AND BEING 10 FEET IN WIDTH AND ADJOINING FRONT AND REAR LOT LINES, AND ADJOINING STREETS, EXCEPT AS SHOWN.



RIVERS EDGE 4TH ADDITION

#56.18

