

RIVERSTONE 2ND ADDITION

CITY OF RAMSEY
COUNTY OF ANOKA
SECS. 20 & 29, TWP. 32, RGE. 25

KNOW ALL PERSONS BY THESE PRESENTS: That Riverstone Development, LLC, a Minnesota limited liability company, owner of the following described property:

Outlot G, RIVERSTONE, according to the recorded plat thereof, Anoka County, Minnesota

Has caused the same to be surveyed and platted as RIVERSTONE 2ND ADDITION and does hereby dedicate to the public for public use the public ways and the drainage and utility easements as shown on this plat.

In witness whereof said Riverstone Development, LLC, a Minnesota limited liability company, has caused these presents to be signed by its proper officer this 10 day of July, 2018

RIVERSTONE DEVELOPMENT, LLC

Stephen A. Bona
Stephen A. Bona, Vice President

STATE OF Minnesota
COUNTY OF Anoka

This instrument was acknowledged before me on July 10th, 2018 by Stephen A. Bona, Vice President of Riverstone Development, LLC, a Minnesota limited liability company, on behalf of the company.

Heather Lord
Heather Lord
Notary Public, Anoka County, Minnesota
My commission expires January 31, 2023

I Thomas R. Balluff do hereby certify that this plat was prepared by me or under my direct supervision; that I am a duly Licensed Land Surveyor in the State of Minnesota; that this plat is a correct representation of the boundary survey; that all mathematical data and labels are correctly designated on this plat; that all monuments depicted on this plat have been, or will be correctly set within one year; that all water boundaries and wet lands, as defined in Minnesota Statutes, Section 505.01, Subd. 3, as of the date of this certificate are shown and labeled on this plat; and all public ways are shown and labeled on this plat.

Dated this 9th day of JULY, 2018

Thomas R. Balluff
Thomas R. Balluff, Licensed Land Surveyor
Minnesota License No. 40361

STATE OF Minnesota
COUNTY OF Anoka

This instrument was acknowledged before me on July 9th, 2018 by Thomas R. Balluff.

Cynthia J. Mocal
Cynthia J. Mocal
Notary Public, Hennepin County, Minnesota
My commission expires January 31, 2020

CITY COUNCIL, CITY OF RAMSEY, MINNESOTA

This plat of RIVERSTONE 2ND ADDITION was approved and accepted by the City Council of the City of Ramsey, Minnesota at a regular meeting thereof held this 26th day of June, 2018, and said plat is in compliance with the provisions of Minnesota Statutes, Section 505.03, Subd. 2.

CITY COUNCIL, CITY OF RAMSEY, MINNESOTA
By: Paul Johnson ACTING Mayor
By: John Balluff ACTING Clerk

COUNTY SURVEYOR

I hereby certify that in accordance with Minnesota Statutes, Section 505.021, Subd. 11, this plat has been reviewed and approved this 26th day of July, 2018

By: Charles F. Gitz
Charles F. Gitz
Anoka County Surveyor

COUNTY AUDITOR/TREASURER

Pursuant to Minnesota Statutes, Section 505.021, Subd. 9, taxes payable in the year 2018 on the land hereinbefore described have been paid. Also, pursuant to Minnesota Statutes, Section 272.12, there are no delinquent taxes and transfer entered this 26 day of July, 2018.

By: Jonell M. Sawyer
Jonell M. Sawyer
Property Tax Administrator
By: Stephan Deputy

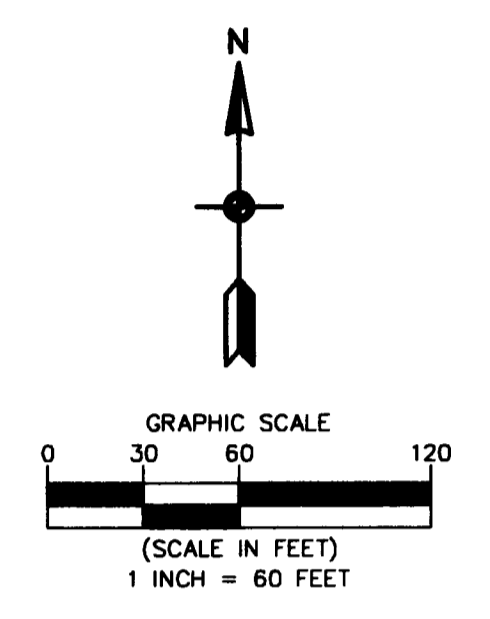
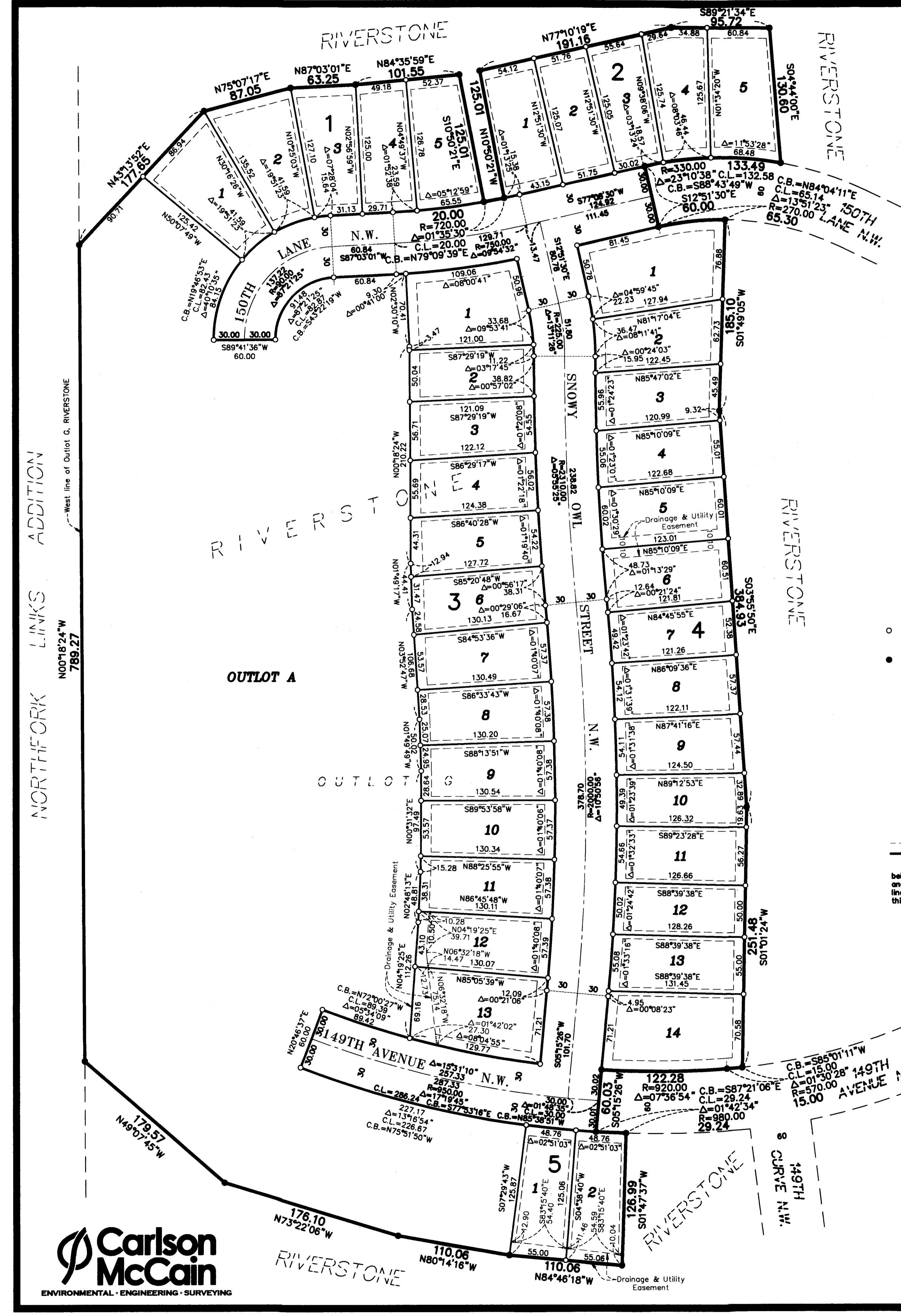
COUNTY RECORDER/REGISTRAR OF TITLES

County of Anoka, State of Minnesota

I hereby certify that this plat of RIVERSTONE 2ND ADDITION was filed in the office of the County Recorder/Registrar of Titles for public record on this 26 day of July, 2018, at 11:13 o'clock A.M. and was duly recorded as Document Number 2205049.002

By: Jonell M. Sawyer
Jonell M. Sawyer
County Recorder/Registrar of Titles
By: Stephan Deputy

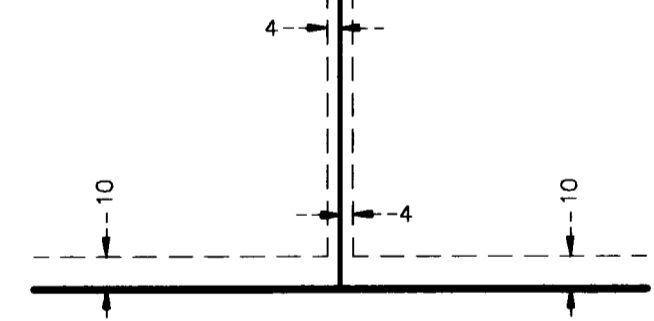
\$56.00



For the purposes of this plat, the West line of Outlot G, RIVERSTONE, is assumed to have a bearing of North 00 degrees 18 minutes 24 seconds West.

- Denotes 5/8 inch by 14 inch Rebar, set or to be set within one year of recording of this plat and marked with license number 40361
- Denotes Found Iron Monument unless otherwise noted

DRAINAGE AND UTILITY EASEMENTS ARE SHOWN THUS:



being 4 feet in width, and adjoining side lot lines, and 10 feet in width and adjoining right of way lines and rear lot lines unless otherwise shown on this plat.