

RIVERSTONE 4TH ADDITION

CITY OF RAMSEY
COUNTY OF ANOKA
SEC. 20, TWP. 32, RGE. 25

KNOW ALL PERSONS BY THESE PRESENTS: That Riverstone Development, LLC, a Minnesota limited liability company, owner of the following described property:

Outlots F and H, RIVERSTONE, Anoka County, Minnesota

Has caused the same to be surveyed and platted as RIVERSTONE 4TH ADDITION and does hereby dedicate to the public for public use the public ways and the drainage and utility easements as shown on this plat.

In witness whereof said Riverstone Development, LLC, a Minnesota limited liability company, has caused these presents to be signed by its proper officer this 9th day of March, 2020.

RIVERSTONE DEVELOPMENT, LLC

Stephen A. Bona
Stephen A. Bona, Vice President of Land

STATE OF MN
COUNTY OF Anoka

This instrument was acknowledged before me on March 9th 2020 by Stephen A. Bona, Vice President of Land of Riverstone Development, LLC, a Minnesota limited liability company, on behalf of the company.

Heather Lorch (Signed)
Heather Lorch (Printed)
Notary Public, Minnesota
My commission expires 1/3/2023

I Thomas R. Balluff do hereby certify that this plat was prepared by me or under my direct supervision; that I am a duly Licensed Land Surveyor in the State of Minnesota; that this plat is a correct representation of the boundary survey; that all mathematical data and labels are correctly designated on this plat; that all monuments depicted on this plat have been, or will be correctly set within one year; that all water boundaries and wet lands, as defined in Minnesota Statutes, Section 505.01, Subd. 3, as of the date of this certificate are shown and labeled on this plat; and all public ways are shown and labeled on this plat.

Dated this 6th day of MARCH, 2020.

Thomas R. Balluff
Thomas R. Balluff, Licensed Land Surveyor
Minnesota License No. 40361

STATE OF Minnesota
COUNTY OF Anoka

This instrument was acknowledged before me on March 6th, 2020 by Thomas R. Balluff.

Cynthia J. Morisal (Signed)
Cynthia J. Morisal (Printed)
Notary Public, Hennepin County, Minnesota
My commission expires January 31, 2025

CITY COUNCIL, CITY OF RAMSEY, MINNESOTA

This plat of RIVERSTONE 4TH ADDITION was approved and accepted by the City Council of the City of Ramsey, Minnesota at a regular meeting thereof held this 10th day of MARCH, 2020, and said plat is in compliance with the provisions of Minnesota Statutes, Section 505.03, Subd. 2.

CITY COUNCIL, CITY OF RAMSEY, MINNESOTA

By: Walter Acting Mayor

By: Colleen Lasler Clerk

COUNTY SURVEYOR

I hereby certify that in accordance with Minnesota Statutes, Section 505.021, Subd. 11, this plat has been reviewed and approved this 8th day of July, 2020.

By: Charles F. Gitzen
Charles F. Gitzen
Anoka County Surveyor

COUNTY AUDITOR/TREASURER

Pursuant to Minnesota Statutes, Section 505.021, Subd. 9, taxes payable in the year 2020 on the land hereinbefore described have been paid. Also, pursuant to Minnesota Statutes, Section 272.12, there are no delinquent taxes and transfer entered this 8th day of July, 2020.

Pamela J LeBlanc
Property Tax Administrator
By: Walter Deputy

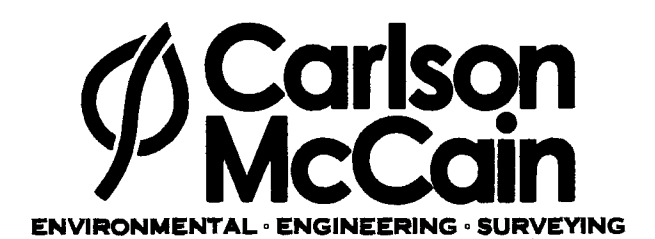
COUNTY RECORDER/REGISTRAR OF TITLES

County of Anoka, State of Minnesota

I hereby certify that this plat of RIVERSTONE 4TH ADDITION was filed in the office of the County Recorder/Registrar of Titles for public record on this 6 day of July, 2020, at 3:23 o'clock P.M. and was duly recorded as Document Number 2268838.004.

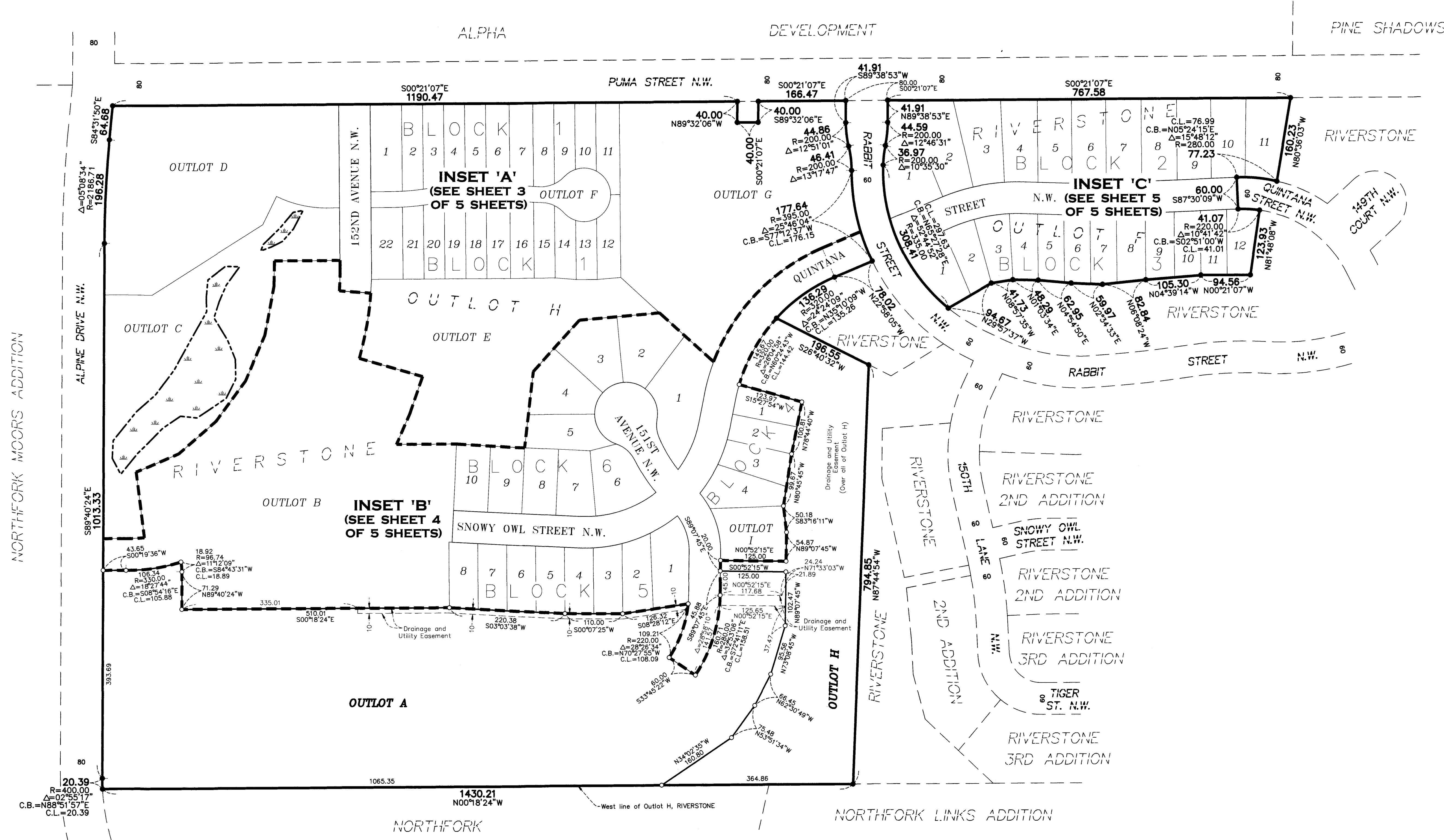
Pamela J LeBlanc
County Recorder/Registrar of Titles
By: Walter Deputy

\$56.00



RIVERSTONE 4TH ADDITION

CITY OF RAMSEY
COUNTY OF ANOKA
SEC. 20, TWP. 32, RGE. 25



NORTHFORK MOORS ADDITION

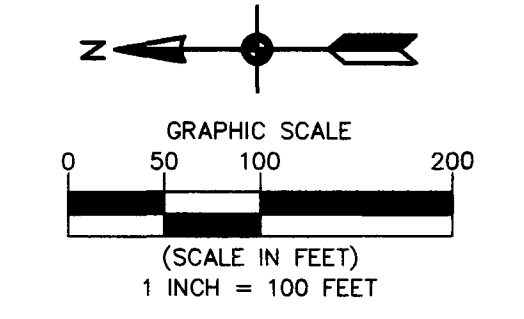
NORTHFORK LINKS ADDITION

○ Denotes 5/8 inch by 14 inch Rebar, set or to be set within one year of recording of this plat and marked with license number 40361

● Denotes found 5/8 inch by 14 inch Rebar marked with license number 40361

▭ Denotes Wetland delineated by Kjolhaug Environmental Services Company in 2016

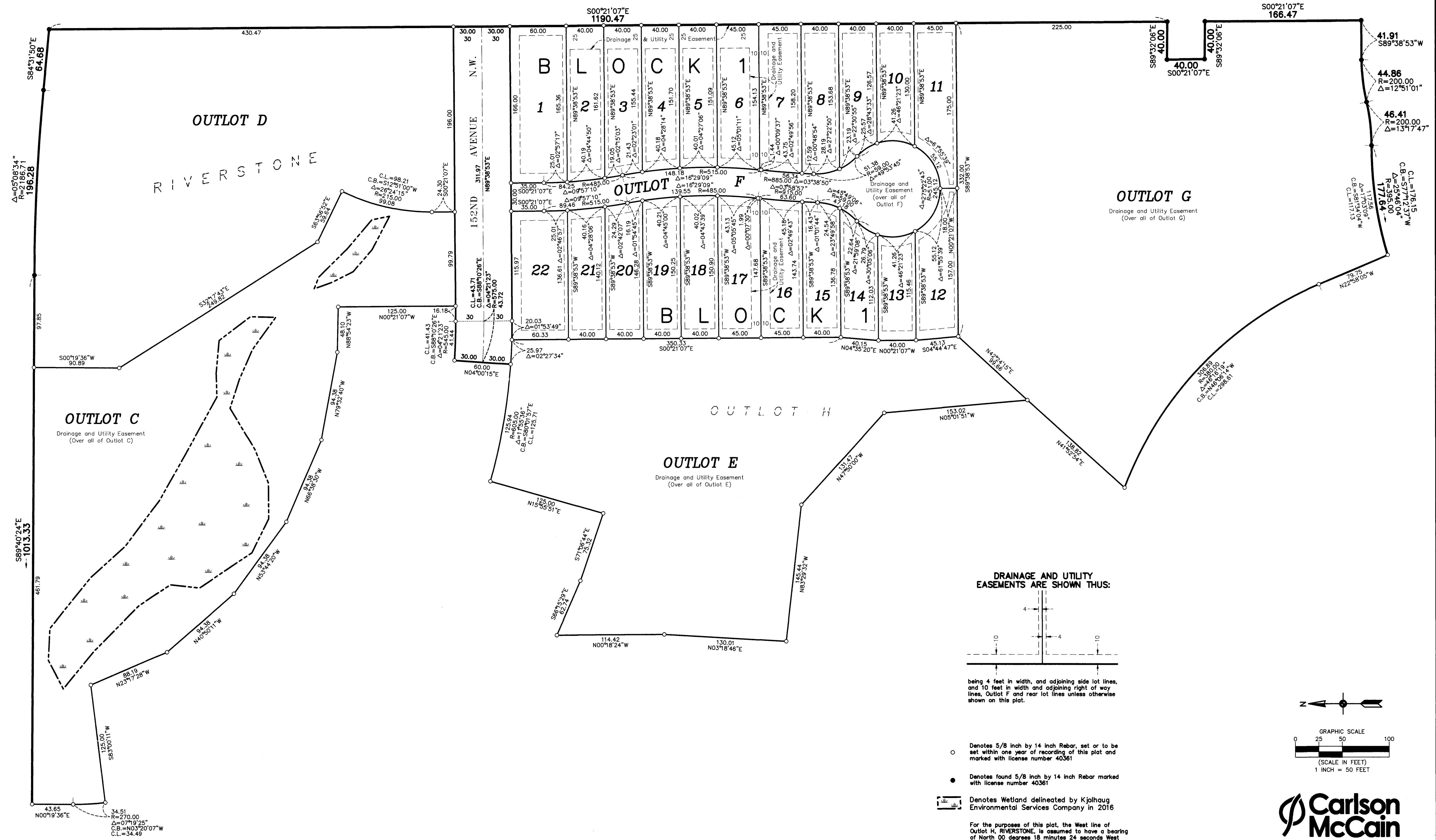
For the purposes of this plat, the West line of Outlot H, RIVERSTONE, is assumed to have a bearing of North 00 degrees 18 minutes 24 seconds West



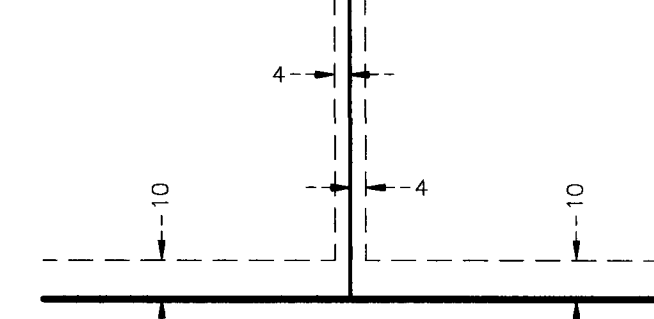
RIVERSTONE 4TH ADDITION

CITY OF RAMSEY
COUNTY OF ANOKA
SEC. 20, TWP. 32, RGE. 25

INSET 'A'



DRAINAGE AND UTILITY EASEMENTS ARE SHOWN THUS:



being 4 feet in width, and adjoining side lot lines, and 10 feet in width and adjoining right of way lines, Outlot F and rear lot lines unless otherwise shown on this plat.

- Denotes 5/8 inch by 14 inch Rebar, set or to be set within one year of recording of this plat and marked with license number 40361
- Denotes found 5/8 inch by 14 inch Rebar marked with license number 40361
- ▭ Denotes Wetland delineated by Kjolhaug Environmental Services Company in 2016

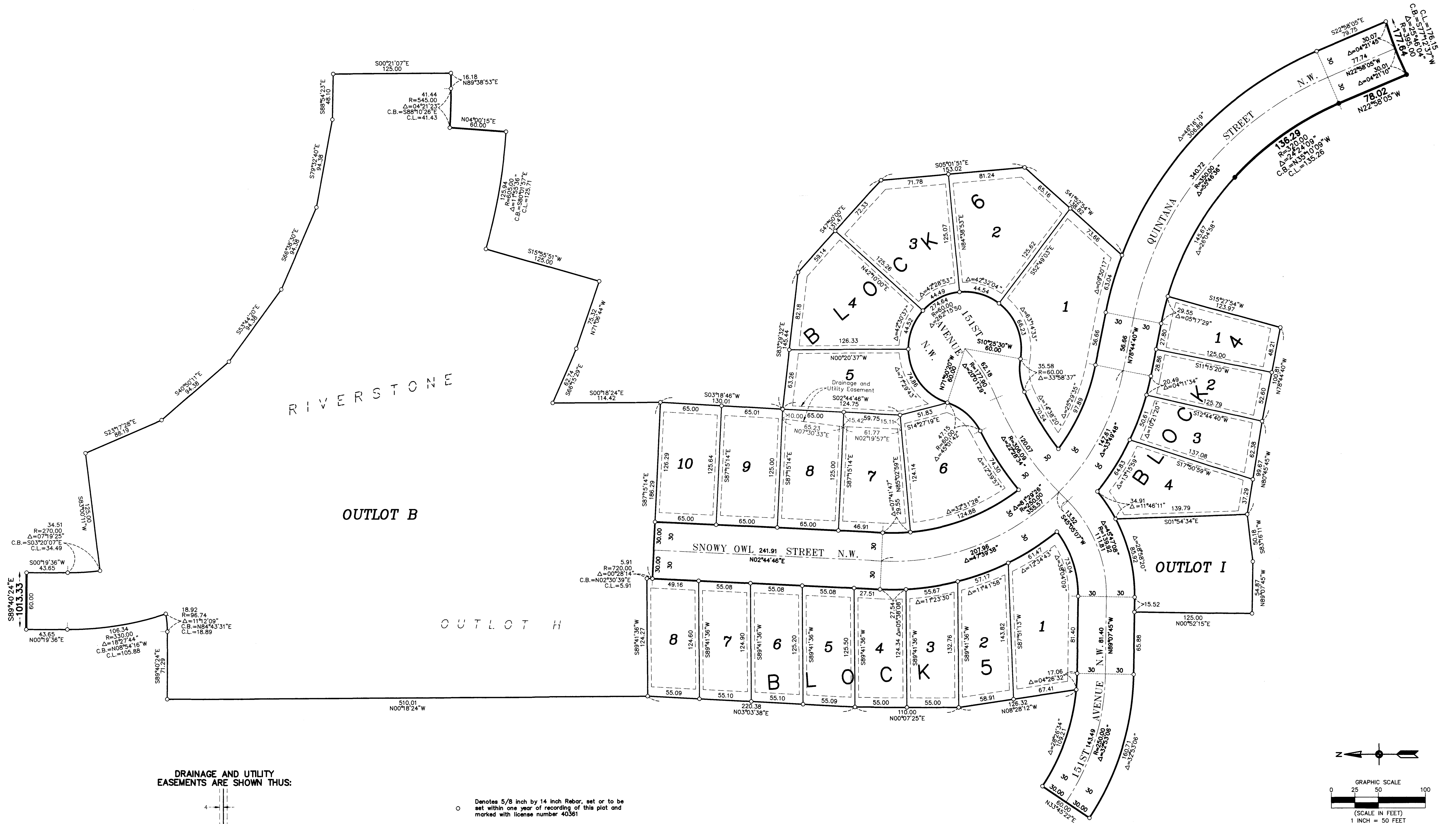
For the purposes of this plat, the West line of Outlot H, RIVERSTONE, is assumed to have a bearing of North 00 degrees 18 minutes 24 seconds West



RIVERSTONE 4TH ADDITION

CITY OF RAMSEY
COUNTY OF ANOKA
SEC. 20, TWP. 32, RGE. 25

INSET 'B'

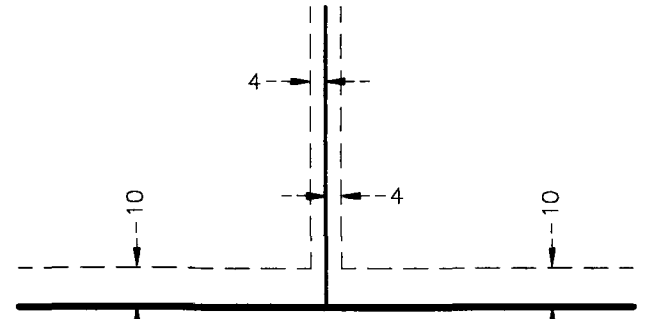


OUTLOT B

OUTLOT H

OUTLOT I

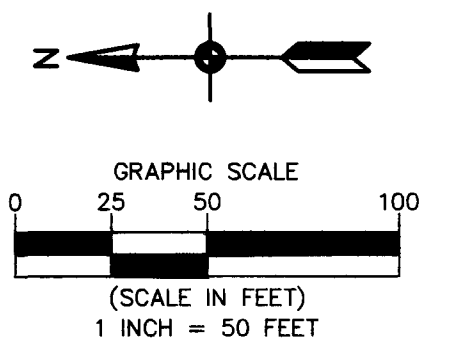
DRAINAGE AND UTILITY EASEMENTS ARE SHOWN THUS:



being 4 feet in width, and adjoining side lot lines, and 10 feet in width and adjoining right of way lines and rear lot lines unless otherwise shown on this plat.

- Denotes 5/8 inch by 14 inch Rebar, set or to be set within one year of recording of this plat and marked with license number 40361
- Denotes found 5/8 inch by 14 inch Rebar marked with license number 40361

For the purposes of this plat, the West line of Outlot H, RIVERSTONE, is assumed to have a bearing of North 00 degrees 18 minutes 24 seconds West

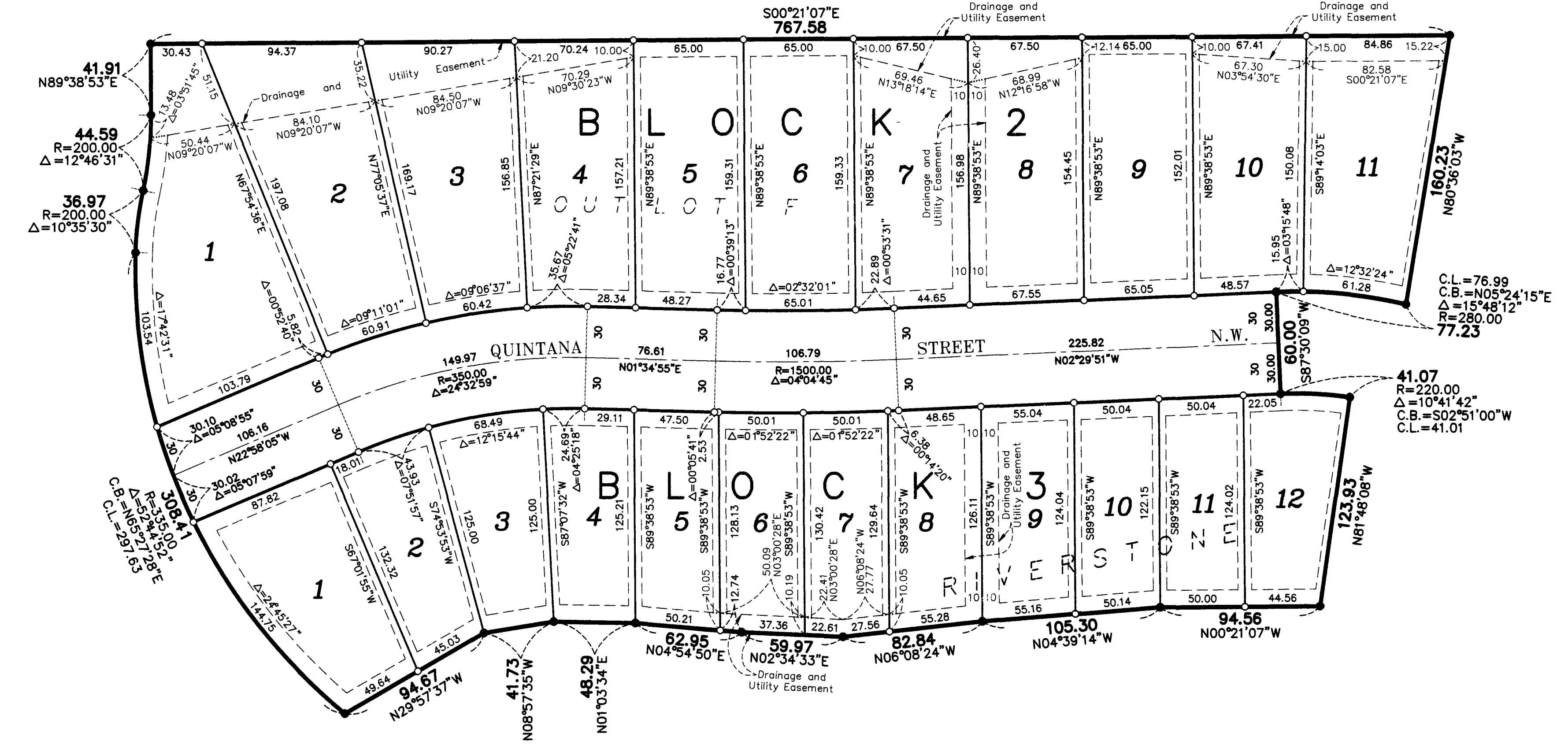


Carlson McCain
ENVIRONMENTAL · ENGINEERING · SURVEYING

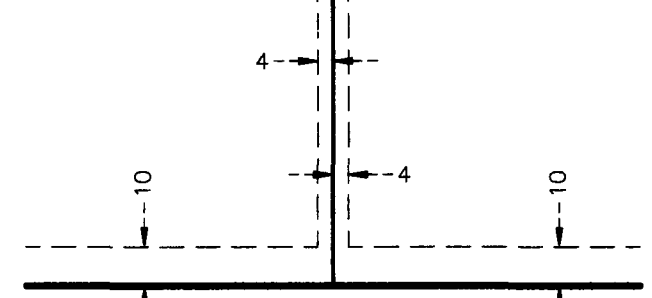
RIVERSTONE 4TH ADDITION

CITY OF RAMSEY
COUNTY OF ANOKA
SEC. 20, TWP. 32, RGE. 25

INSET 'C'



DRAINAGE AND UTILITY EASEMENTS ARE SHOWN THUS:



being 4 feet in width, and adjoining side lot lines, and 10 feet in width and adjoining right of way lines and rear lot lines unless otherwise shown on this plat.

- Denotes 5/8 inch by 14 inch Rebar, set or to be set within one year of recording of this plat and marked with license number 40361
- Denotes found 5/8 inch by 14 inch Rebar marked with license number 40361

For the purposes of this plat, the West line of Outlot H, RIVERSTONE, is assumed to have a bearing of North 00 degrees 18 minutes 24 seconds West

