

RIVERSTONE SOUTH SECOND ADDITION

CITY OF RAMSEY
COUNTY OF ANOKA
SEC. 29, TWP. 32, RGE. 25

KNOW ALL PERSONS BY THESE PRESENTS: That Riverstone Development, LLC, a Minnesota limited liability company, owner of the following described property:

Outlot L, RIVERSTONE SOUTH, Anoka County, Minnesota

Has caused the same to be surveyed and platted as RIVERSTONE SOUTH SECOND ADDITION and does hereby dedicate to the public for public use the public ways and the drainage and utility easements as shown on this plat.

In witness whereof said Riverstone Development, LLC, a Minnesota limited liability company, has caused these presents to be signed by its proper officer this 31st day of May, 2023.

RIVERSTONE DEVELOPMENT, LLC

Stephen A. Bona
Stephen A. Bona, Vice President of Land

STATE OF Minnesota
COUNTY OF Anoka

This instrument was acknowledged before me on May 31st 2023 by Stephen A. Bona, Vice President of Land of Riverstone Development, LLC, a Minnesota limited liability company, on behalf of the company.

Matthew Glen Barker (Signed)
Matthew Glen Barker (Printed)
Notary Public, Anoka County, Minnesota
My commission expires Jan. 31st 2025

I, Thomas R. Balluff do hereby certify that this plat was prepared by me or under my direct supervision; that I am a duly Licensed Land Surveyor in the State of Minnesota; that this plat is a correct representation of the boundary survey; that all mathematical data and labels are correctly designated on this plat; that all monuments depicted on this plat have been, or will be correctly set within one year; that all water boundaries and wet lands, as defined in Minnesota Statutes, Section 505.01, Subd. 3, as of the date of this certificate are shown and labeled on this plat; and all public ways are shown and labeled on this plat.

Dated this 19th day of MAY, 2023.

Thomas R. Balluff
Thomas R. Balluff, Licensed Land Surveyor
Minnesota License No. 40361

STATE OF Minnesota
COUNTY OF Anoka

This instrument was acknowledged before me on May 19, 2023 by Thomas R. Balluff.

Cynthia J. Morica (Signed)
Cynthia J. Morica (Printed)
Notary Public, Hennepin County, Minnesota
My commission expires January 31, 2025

CITY COUNCIL, CITY OF RAMSEY, MINNESOTA

This plat of RIVERSTONE SOUTH SECOND ADDITION was approved and accepted by the City Council of the City of Ramsey, Minnesota at a regular meeting thereof held this 13th day of December, 2022, and said plat is in compliance with the provisions of Minnesota Statutes, Section 505.03, Subd. 2.

CITY COUNCIL, CITY OF RAMSEY, MINNESOTA

By: Mark E. Kuzan, Mayor

By: K. L., Clerk

COUNTY SURVEYOR

I hereby certify that in accordance with Minnesota Statutes, Section 505.021, Subd. 11, this plat has been reviewed and approved this 21st day of June, 2023.

By: David M. Ziegler
David M. Ziegler
Anoka County Surveyor

COUNTY AUDITOR/TREASURER

Pursuant to Minnesota Statutes, Section 505.021, Subd. 9, taxes payable in the year 2023 on the land hereinbefore described have been paid. Also, pursuant to Minnesota Statutes, Section 272.12, there are no delinquent taxes and transfer entered this 21 day of June, 2023.

Pamela J LeBlanc
Property Tax Administrator
By: [Signature], Deputy

COUNTY RECORDER/REGISTRAR OF TITLES

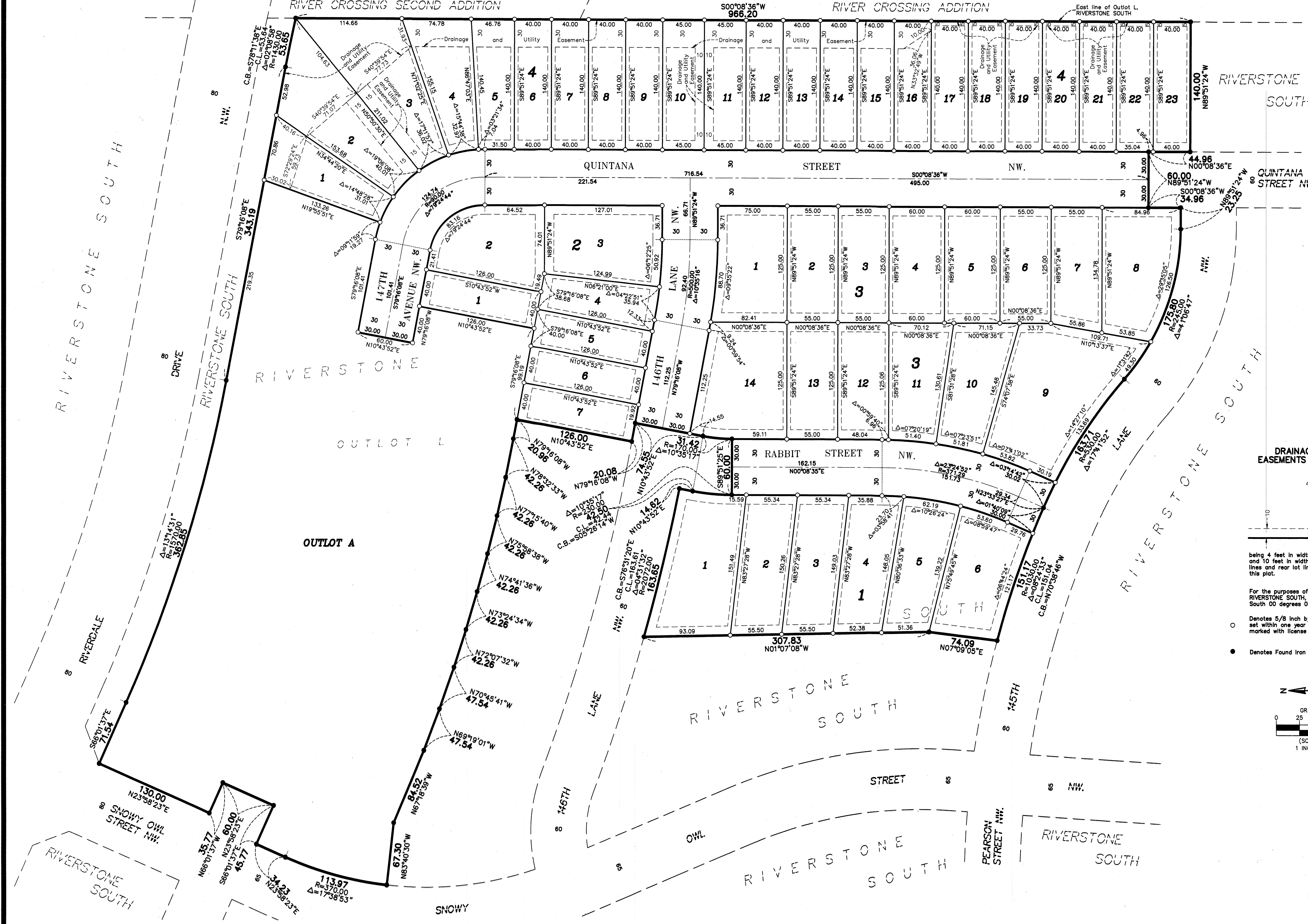
County of Anoka, State of Minnesota

I hereby certify that this plat of RIVERSTONE SOUTH SECOND ADDITION was filed in the office of the County Recorder/Registrar of Titles for public record on this 21 day of June, 2023 at 9:45 o'clock A.M. and was duly recorded as Document Number 2393002.002.

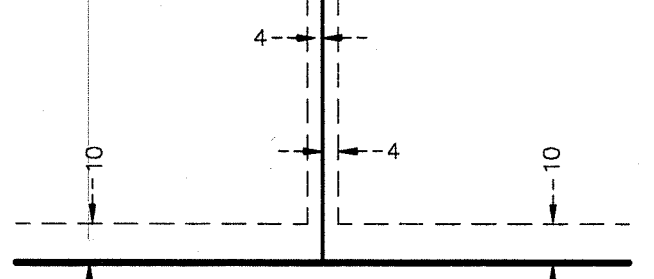
Pamela J LeBlanc
County Recorder/Registrar of Titles
By: [Signature], Deputy

RIVERSTONE SOUTH SECOND ADDITION

CITY OF RAMSEY
COUNTY OF ANOKA
SEC. 29, TWP. 32, RGE. 25



DRAINAGE AND UTILITY
EASEMENTS ARE SHOWN THUS:



being 4 feet in width, and adjoining side lot lines,
and 10 feet in width and adjoining right of way
lines and rear lot lines unless otherwise shown on
this plat.

For the purposes of this plat, the East line of Outlot L,
RIVERSTONE SOUTH, is assumed to have a bearing of
South 00 degrees 08 minutes 36 seconds West.

- Denotes 5/8 inch by 14 inch Rebar, set or to be set within one year of recording of this plat and marked with license number 40361
- Denotes Found Iron Monument marked with RLS 40361

