

Riverview Farm 2nd Addition

CITY of COON RAPIDS, COUNTY of ANOKA

Suburban ENGINEERING, INC.

- Engineers & Surveyors -

KNOW ALL MEN BY THESE PRESENTS: that Duffy Lumber Company, a Minnesota Corporation, owner and proprietor of the following described property situate in the State of Minnesota, and County of Anoka, to-wit: Lot 3 and Lot 4, Block 2, Riverview Farm, and the South 1/2 of vacated Division Street, lying immediately adjacent to said Lot 4, and also the North 1/2 of vacated Division Street, lying immediately adjacent to said Lot 3, have caused the same to be surveyed and platted as RIVERVIEW FARM 2ND ADDITION; and do hereby donate and dedicate to the public for public use forever the Streets and Avenues as shown on the annexed plat; In witness whereof said Duffy Lumber Company, has caused these presents to be signed by its proper officers and its corporate seal to be hereunto affixed, this 1ST day of APRIL A.D. 1960.

In Presence of
Albin Peterson
Glenn Barrett
As to Harry S. Duffy and Patrick H. Duffy

DUFFY LUMBER COMPANY
Harry S. Duffy President
Patrick H. Duffy Secretary-Treasurer

State of Minnesota }
County of Anoka } on this 1ST day of APRIL A.D. 1960, before me a Notary Public within and for said County and State, personally appeared Harry S. Duffy and Patrick H. Duffy, to me personally known who by me each duly sworn did say that they are respectively President and Secretary-Treasurer of Duffy Lumber Company, the corporation named in the foregoing instrument that the corporate seal affixed to said instrument is the corporate seal of said corporation, and that said instrument was signed and sealed in behalf of said corporation by authority of its Board of Directors and said Harry S. Duffy and Patrick H. Duffy acknowledged said instrument to be the free act and deed of said corporation.

Albin Peterson
ALBIN PETERSON
Notary Public, Anoka County, Minnesota
My Commission Expires MAY 30, 1966

I hereby certify that I have surveyed and platted the property described on this plat as RIVERVIEW FARM 2ND ADDITION; that this plat is a correct representation of said survey; that all distances are correctly shown on the plat in feet and decimals of a foot; that the monuments for guidance of future surveys are correctly placed in the ground as shown on the plat; that the outside boundary lines are correctly designated on the plat; and that there are no net lands or public highways to be designated on said plat other than as shown thereon.

E. A. Rathbun
Surveyor - Minnesota Registration N° 3795

State of Minnesota }
County of Anoka } Above certificate subscribed and sworn to before me, a Notary Public, this 29th day of March A.D. 1960.

Suzanne Miskowic
Notary Public, Anoka County, Minnesota
My Commission Expires Dec. 26, 1964

We hereby certify that the City Council of the City of Coon Rapids, Anoka County, Minnesota, duly accepted and approved the annexed plat of RIVERVIEW FARM 2ND ADDITION at a regular meeting thereof held this 6 day of July A.D. 1960.

CITY of COON RAPIDS, ANOKA COUNTY, MINN.

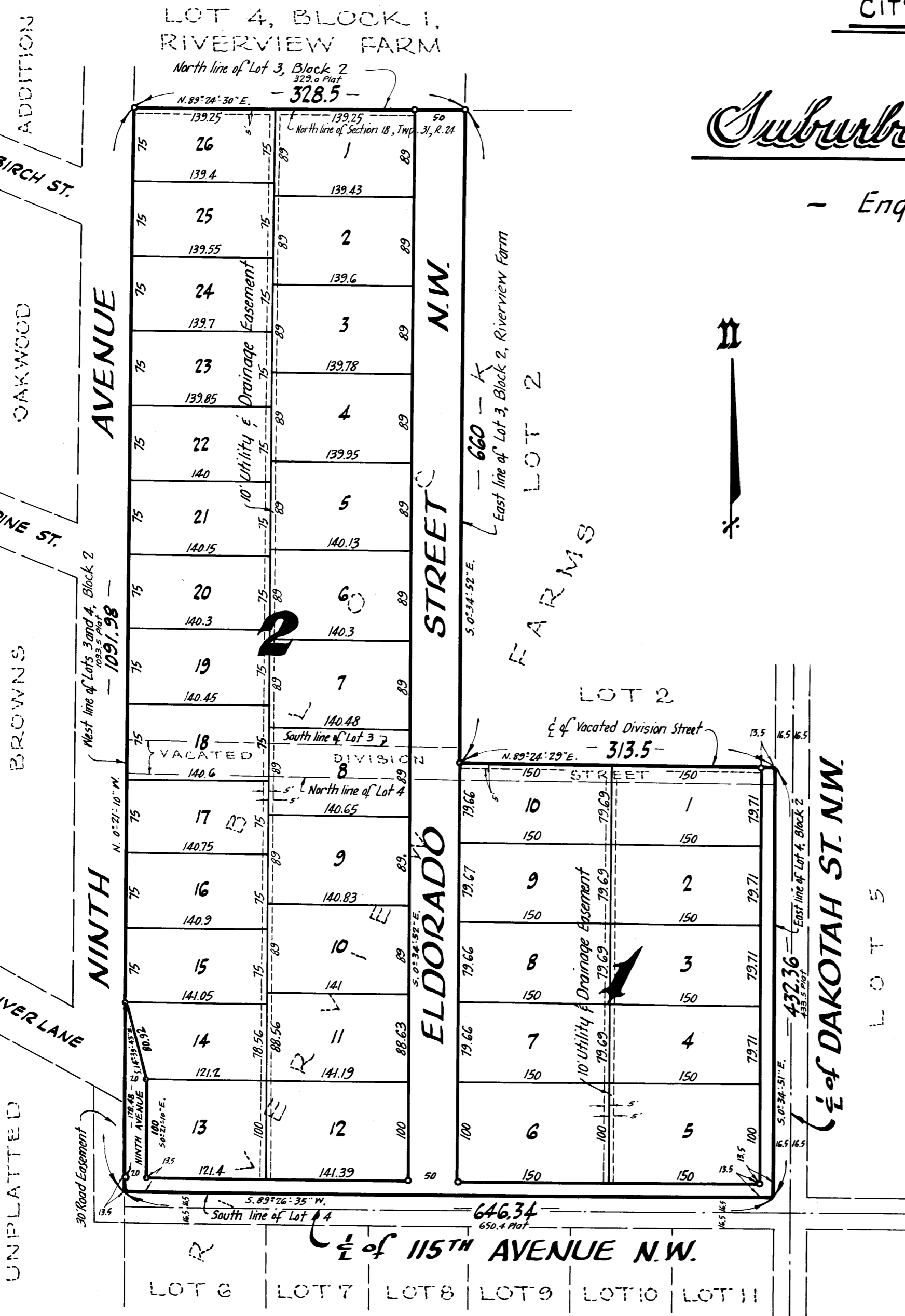
by Joseph A. Craig Mayor
by Paul Tolbert Clerk

The annexed plat of RIVERVIEW FARM 2ND ADDITION was approved by the Planning and Zoning Commission of the City of Coon Rapids, Minnesota at a regular meeting thereof held this 6 day of July A.D. 1960.

by Paul E. Pesner Chairman
by Harold Kuntz Clerk

Checked and approved by me this 26 day of July A.D. 1960.

Richard W. Anderson
Anoka County Surveyor



Office of REGISTRAR OF TITLES
STATE OF MINNESOTA
COUNTY OF ANOKA
I hereby certify that the within instrument was filed in this office on the 27th day of August 1960, A. D. 1960, at 4 o'clock, P. M.
By Ertrude Skinner Registrar of Titles
By E. L. N. Boettcher Deputy Registrar of Titles

TAXES PAID
This 27th day of July 1960
Harold H. Campbell
Auditor, Anoka County, Minn.

Exempt from state dead tax
Walter D. Bowers
County Treasurer

I HEREBY CERTIFY THAT TAXES FOR THE YEAR, 1959, ON THE LANDS DESCRIBED WITHIN ARE PAID
Walter D. Bowers
County Treasurer