

REVISED AUDITORS  
SUBDIVISION NO. 75 33

WOODDALE

PARK

# RIVERVIEW TOWNHOUSES SECOND ADDITION

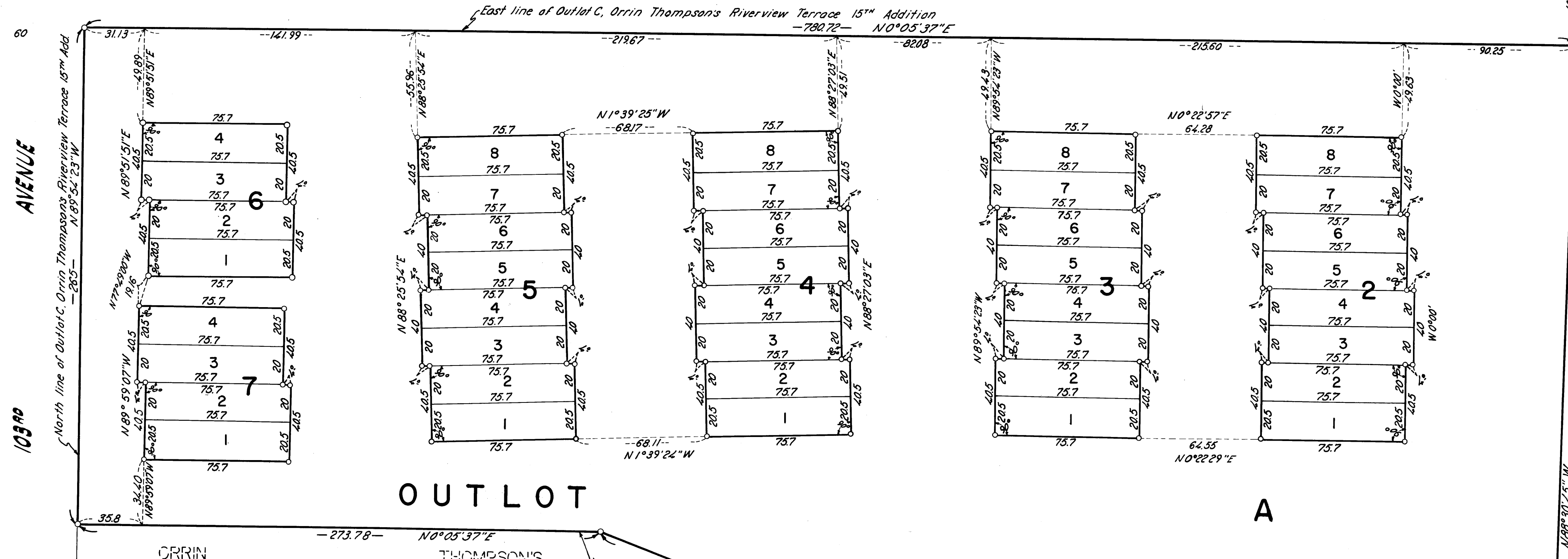
CITY OF COON RAPIDS  
COUNTY OF ANOKA



SCALE 1" = 40'

o Denotes Iron Monument  
Marked "R.L.S. 7726"  
Bearings are Assumed  
SEPTEMBER 1971

RIVERVIEW  
ADDITION  
THOMPSON'S  
15th  
TERRACE



KNOW ALL MEN BY THESE PRESENTS: That Orrin E. Thompson Construction Corporation, a Minnesota Corporation, owner and proprietor of the following described property situate in the State of Minnesota and County of Anoka to wit: Outlot C, Orrin Thompson's Riverview Terrace 15th Addition, according to the plat thereof on file and of record in the office of the Register of Deeds in and for said Anoka County, has caused the same to be surveyed and platted as RIVERVIEW TOWNHOUSES SECOND ADDITION, subject to a utility easement over Outlot A, as created hereon and said Orrin E. Thompson Construction Corporation, in recording the plat of RIVERVIEW TOWNHOUSES SECOND ADDITION, has designated certain areas of land as parks, playground, etc., intended for use by the homeowners in RIVERVIEW TOWNHOUSES SECOND ADDITION for recreation and other related activities. The designated areas are not dedicated hereby for use by the general public, but are dedicated to the common use and enjoyment of the homeowners in RIVERVIEW TOWNHOUSES SECOND ADDITION as more fully provided in the Declaration of Covenants, Conditions and Restrictions applicable to RIVERVIEW TOWNHOUSES SECOND ADDITION dated September 30, 1971. Said Declarations of Covenants, Conditions and Restrictions is hereby incorporated and made a part of this plat. In witness whereof said Orrin E. Thompson Construction Corporation has caused these presents to be signed by its proper officers and its corporate seal to be hereunto affixed this 19th day of October A.D. 1971.

In Presence Of

Dale Eckwall  
Eric M. Fisher  
As to Gary W. Thompson  
and Robert Bjorklund

ORRIN E. THOMPSON CONSTRUCTION CORPORATION

Gary W. Thompson  
GARY W. THOMPSON - President  
Robert Bjorklund  
ROBERT BJORKLUND - Vice President

"NO DELINQUENT TAXES"

November 20, 1971  
Dale Eckwall  
Auditor, Anoka County  
BY Eric M. Fisher  
Deputy

The annexed plat of RIVERVIEW TOWNHOUSES SECOND ADDITION was approved by the Planning and Zoning Commission of the City of Coon Rapids at a regular meeting thereof held this 18th day of November A.D. 1971

CITY OF COON RAPIDS, ANOKA COUNTY, MINNESOTA  
by Charles A. Shaw its Chairman  
by William J. McLean Jr. its Clerk

We hereby certify that the City Council of Coon Rapids, Anoka County, Minnesota duly accepted and approved the annexed plat of RIVERVIEW TOWNHOUSES SECOND ADDITION, at a regular meeting thereof held this 23 day of November A.D. 1971.

CITY OF COON RAPIDS, ANOKA COUNTY, MINNESOTA  
by Robert Bras its Mayor  
by Norman J. Storrer its Clerk

Checked and approved this 26th day of November A.D. 1971.  
Poland W. Ardelean  
Anoka County Surveyor

State of Minnesota  
County of Hennepin On this 19th day of October A.D. 1971, before me a Notary Public, within and for said County and State personally appeared Gary W. Thompson and Robert Bjorklund, who being each by me duly sworn did say that they are respectively President and Vice President of Orrin E. Thompson Construction Corporation, the corporation named in the foregoing instrument; that the corporate seal affixed to said instrument is the corporate seal of said corporation and that said instrument was signed and sealed in behalf of said corporation by authority of its Board of Directors and said Gary W. Thompson and Robert Bjorklund acknowledged said instrument to be the free act and deed of said corporation.

DALE V. ECKWALL  
Notary Public, Hennepin County, Minn.  
My Commission Expires April 25, 1973

Dale Eckwall  
Notary Public, Hennepin County, Minnesota  
My Commission Expires April 25, 1973

I hereby certify that I have surveyed and platted the property described on this plat as RIVERVIEW TOWNHOUSES SECOND ADDITION, that this plat is a correct representation of said survey, that all distances are correctly shown on said plat in feet and decimals of a foot, that all monuments have been correctly placed in the ground as shown on said plat, that the outside boundary lines are correctly designated on said plat and that there are no wetlands or public highways to be designated on said plat.

Charles A. Winder  
Surveyor - Minnesota Registration No. 7726

State of Minnesota  
County of Hennepin Above certificate subscribed and sworn to before me, a Notary Public, within and for said County and State this 16th day of October A.D. 1971.

ERNEST G. RUD  
Notary Public, Hennepin County, Minn.  
My Commission Expires July 10, 1975

Ernest G. Rud  
Notary Public, Hennepin County, Minnesota  
My Commission Expires July 10, 1975

OFFICE OF REGISTER OF DEEDS  
STATE OF MINNESOTA, COUNTY OF ANOKA } ss

I hereby certify that the within instrument was filed in this office for record on the 29th day of NOV. 1971 A.D. 1971 at 11 o'clock A.M. and was duly recorded in book 2 of Plats page 2

Frank J. Orendahl  
Register of Deeds  
By Marquise R. Orendahl  
Deputy

Designed By:  
**C.R. WINDEN & ASSOCIATES, INC.**  
LAND SURVEYORS