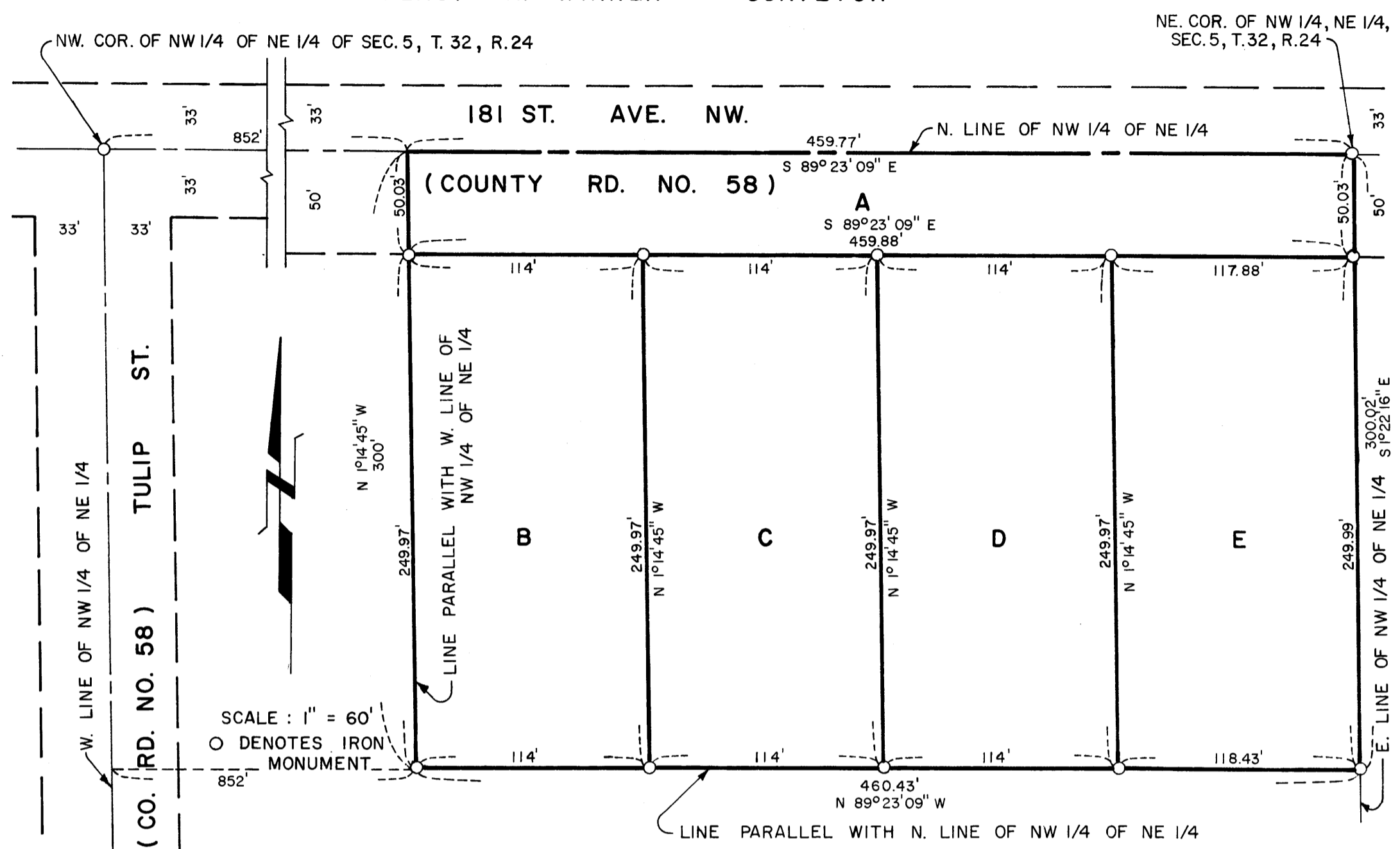


REVISED REGISTERED LAND SURVEY NO. 7

ANOKA COUNTY, MINNESOTA

LEROY H. WINNER SURVEYOR



SCALE: 1" = 60'
O DENOTES IRON MONUMENT

I hereby certify that in accordance with the provisions of Chapter 508, Minnesota Statutes of 1949 as amended, I have surveyed the following described property situated in the County of Anoka, State of Minnesota, to-wit:

That part of the NW 1/4 of the NE 1/4 of Section 5, Township 32, Range 24 described as follows:

Beginning at a point on the North line of said NW 1/4 of the NE 1/4, said point being 852 feet East of the Northwest corner of said NW 1/4 of the NE 1/4; thence South and parallel with the West line of said NW 1/4 of the NE 1/4 a distance of 300 feet; thence East and parallel with the North line of said NW 1/4 of the NE 1/4 and to the East line of said NW 1/4 of the NE 1/4; thence North on said East line to the Northeast corner of said NW 1/4 of the NE 1/4; thence West on the North line of said NW 1/4 of the NE 1/4 to the point of beginning.

That the survey shown hereon is a correct delineation of said survey.

Dated this 25th day of June 1971.

Leroy H. Winner
LAND SURVEYOR, MINN. REG. NO. 4987

72414

Office of REGISTRAR OF TITLES
STATE OF MINNESOTA
COUNTY OF ANOKA

I hereby certify that the within instrument was filed in this office on the ___ day of

OCT 20 1971 A.D. 19__ at 2:00 o'clock P.M.

Paul J. Omdahl Registrar of Titles
By *Allen B. Bettcher* DEPUTY REGISTRAR OF TITLES

REVISED REGISTERED LAND SURVEY NO. 7

ANOKA COUNTY, MINNESOTA

LEROY H. WINNER SURVEYOR

THE REGISTERED LAND SURVEY SHOWN ON SHEET 1 WAS APPROVED AND ACCEPTED BY THE TOWN BOARD OF THE TOWNSHIP OF GROW AT A REGULAR MEETING HELD THIS 13 DAY OF July 1971 A. D.

Louis Appledy CHAIRMAN

Mary L. Just CLERK

THIS REGISTERED LAND SURVEY WAS APPROVED AND ACCEPTED BY THE BOARD OF COUNTY COMMISSIONERS OF THE COUNTY OF ANOKA, STATE OF MINNESOTA, AT A REGULAR MEETING HELD THIS 10 DAY OF August 1971 A. D.

Albert B. Schick CHAIRMAN

Charles R. Lefebvre AUDITOR

RECOMMENDED FOR APPROVAL THIS 10th DAY OF August 1971 A. D.

E. J. Lundheim
COUNTY HIGHWAY ENGINEER, ANOKA COUNTY, MINNESOTA

THIS REGISTERED LAND SURVEY WAS APPROVED AS TO FORM AND EXECUTION ON THIS 27th DAY OF September 1971 A. D.

Robert A. Johnson
COUNTY ATTORNEY, ANOKA COUNTY, MINNESOTA

THIS REGISTERED LAND SURVEY WAS CHECKED AND APPROVED ON THIS 14th DAY OF July 1971 A. D.

Roland W. Anderson
COUNTY SURVEYOR, ANOKA COUNTY, MINNESOTA

"NO DELINQUENT TAXES"

September 27 1971
Charles R. Lefebvre
Auditor, Anoka County
By *Allen B. Bettcher* Deputy