

Official

R.L.S. BK. 1- Page 1

REGISTERED LAND SURVEY NO. 1

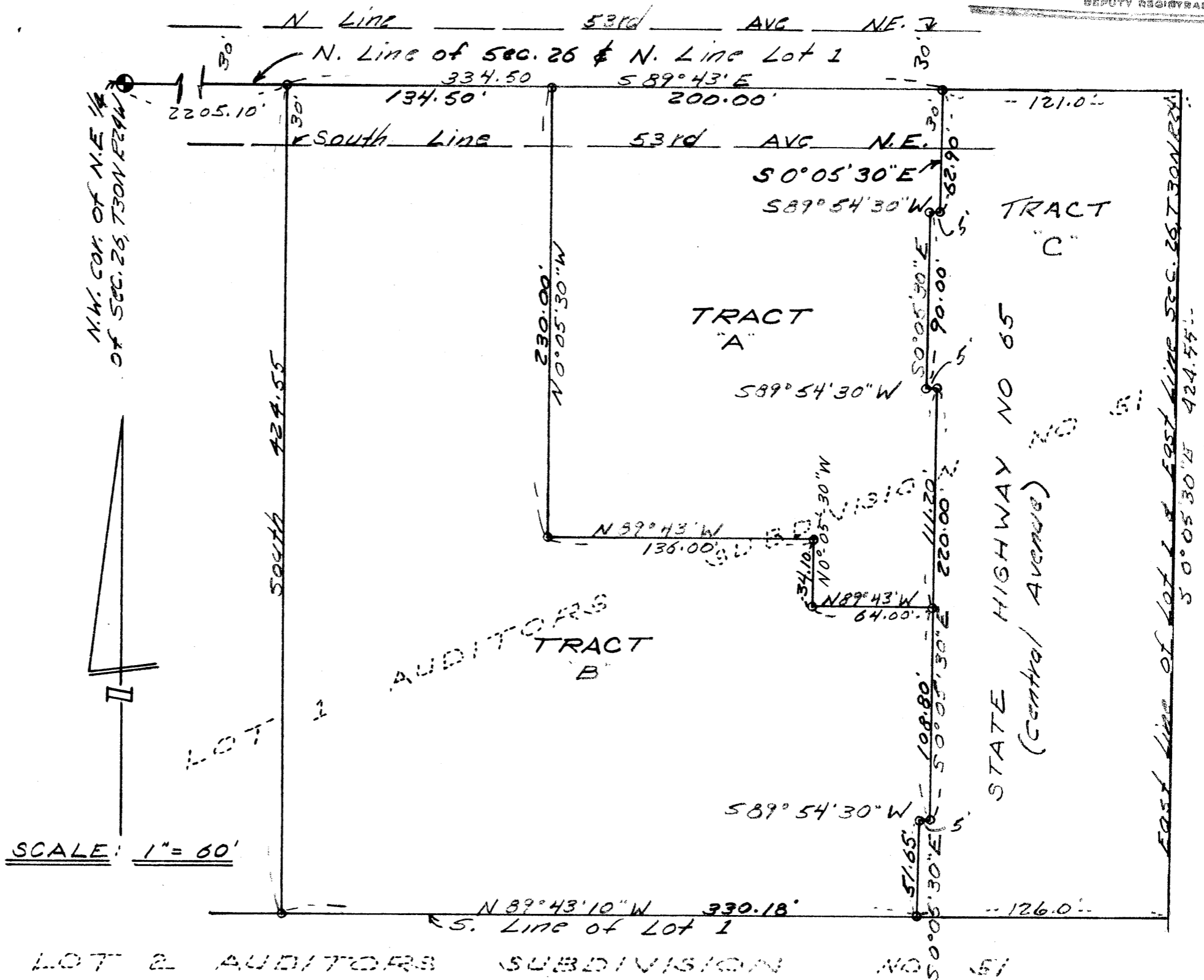
ANOKA COUNTY, MINNESOTA

60504

Office of REGISTRAR OF TITLE
STATE OF MINNESOTA
COUNTY OF ANOKA

Bearings shown are assumed
o - Indicates iron monument
December 1967

I hereby certify that the within instrument was filed in the office on the _____ day of _____ A.D. 1968 at 10:30 o'clock A.M.
By: Neil J. Onders Registrar of Title
By: Edna Boettcher Deputy Registrar of Title



I hereby certify that in accordance with the provisions of Chapter 508, Minnesota Statutes of 1949, as amended, I have surveyed the following described tract of land in the County of Anoka and State of Minnesota, to wit:

That part of Lot 1, Auditor's Subdivision No. 51, Anoka County, Minnesota lying East of the following described line: Beginning at a point on the North line of said Lot 1, distant 2205.10 feet East of the Northwest corner of said Lot 1, (assuming the North line of said Lot 1 to be South 89 degrees, 43 minutes East); thence South 0 degrees, a distance of 424.55 feet, more or less to a point of intersection with the South line of said Lot 1 and there terminating. Subject to State Highway No. 65. (TRACT 'A')

And that the survey shown hereon is a correct delineation of said survey.

Dated this 8th day of JANUARY 1968.

James S. Kurtz
Surveyor Minnesota Registration No. 5332

This Registered Land Survey was approved and accepted by the City of Columbia Heights, Minnesota, this 23rd day of JANUARY A.D. 1968.

City of Columbia Heights, Minnesota
By: Gene W. Murock Mayor
By: Alvin P. Theis Clerk

TAXES PAID

This 6th day of Mar. 1968
Kenneth W. Campbell
Auditor, Anoka County, Minn.
Lube E. Sage Deputy

Robert A. Peterson

Approved and approved by
Feb. 68
Roland W. Ordeman