

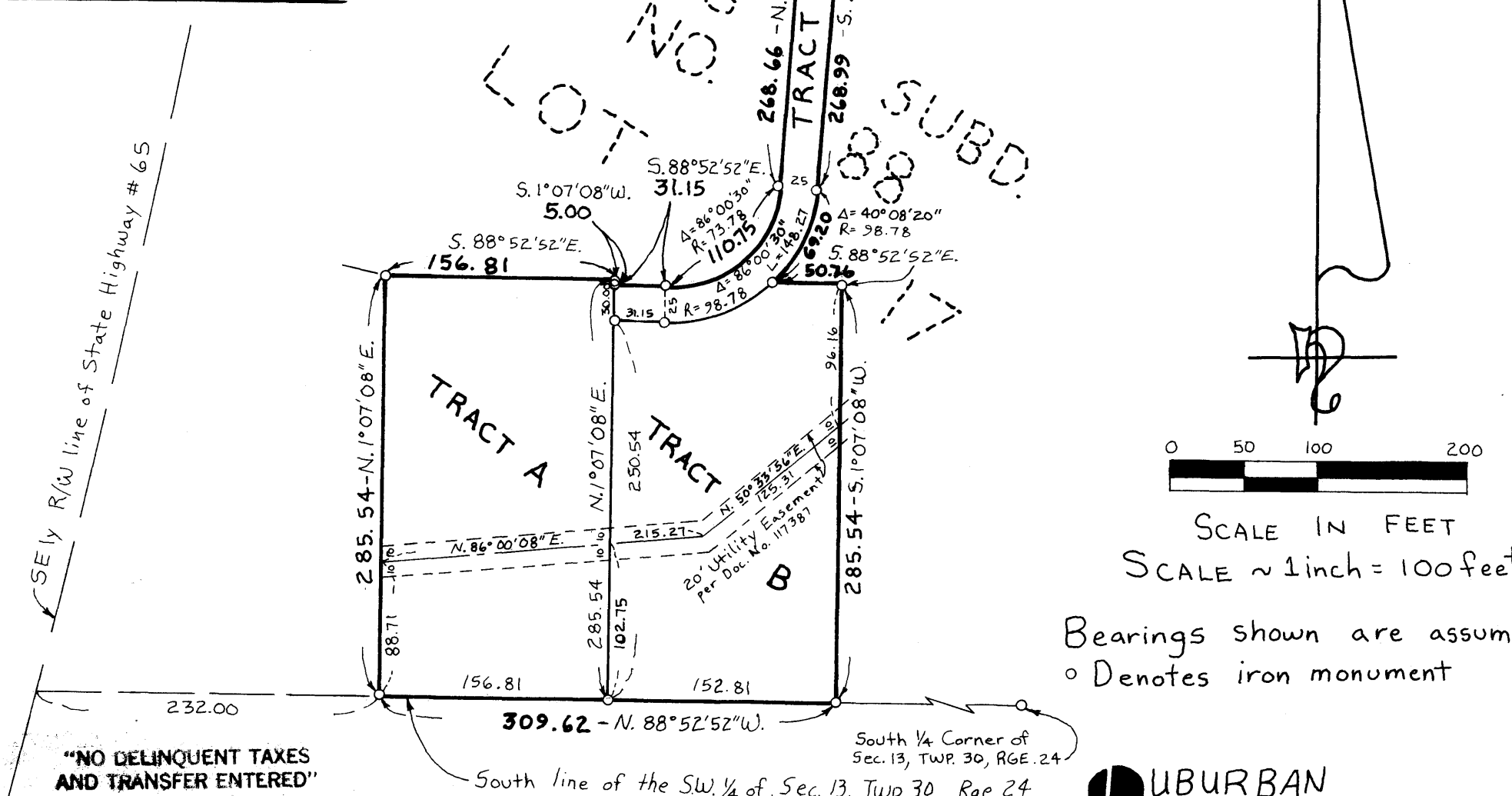
REGISTERED LAND SURVEY NO. 100

Anoka County, Minnesota

166063

Office of REGISTRAR OF TITLES
STATE OF MINNESOTA
COUNTY OF ANOKA

I hereby certify that the within instrument
was filed in this office on the ___ day of
JUL 27 1987 A.D. 19__ at 12:15 o'clock P.M.
By Charles R. Lefebvre Registrar of Titles
By Katharine Buser DEPUTY REGISTRAR OF TITLES



UBURBAN
ENGINEERING, INC.
6875 Hwy. # 65 NE
Fridley, MN 55432
Tel. 571-6066

"NO DELINQUENT TAXES
AND TRANSFER ENTERED"

July 27 1987
Charles R. Lefebvre
Auditor, Anoka County
By Donell McLawry
Deputy

I hereby certify that in accordance with the provisions of Chapter 508, Minnesota Statutes of 1949, as amended,
I have surveyed the following described tract of land in the County of Anoka and State of Minnesota to wit:

That part of Lot 17, Auditors Subdivision No. 88, also being part of the Southwest Quarter of Section 13,
Township 30, Range 24, Anoka County, Minnesota, described as follows: beginning at a point on the south
line of said Southwest Quarter, said south line has an assumed bearing of S. 88°52'52" E., distant 232.00
feet easterly of the intersection of the southeasterly right of way line of State Highway No. 65 and the
said south line; thence N. 1°07'08" E. a distance of 285.54 feet; thence S. 88°52'52" E. a distance of
156.81 feet; thence S. 1°07'08" W. a distance of 5.00 feet; thence S. 88°52'52" E. a distance of 31.15
feet; thence on a tangential curve to the left having a radius of 73.78 feet and a delta angle of 86°00'30"
a distance of 110.75 feet; thence N. 5°06'38" E. a distance of 268.66 feet to the southerly right of way line
of Rice Creek Road; thence S. 85°39'30" E., along said right of way line, a distance of 25.00 feet; thence
S. 5°06'38" W. a distance of 268.99 feet; thence on a tangential curve to the right having a radius of
98.78 feet and a delta angle of 40°08'20" a distance of 69.20 feet; thence S. 88°52'52" E. a distance of
50.76 feet; thence S. 1°07'08" W. a distance of 285.54 feet to the said south line; thence N. 88°52'52" W.,
along said south line, a distance of 309.62 feet to the point of beginning.

This is a correct delineation of the survey dated this 13th day of May, 1987.
Howard W. Rogers
Howard W. Rogers, Land Surveyor
Minnesota Registration No. 10045

Checked and approved this 14th day of May, 1987.
Walter D. Anderson
Anoka County Surveyor

This Registered Land Survey has been approved and accepted by the City Council of Fridley at a regular meeting
thereof held this 7th day of July, 1986.
CITY COUNCIL OF FRIDLEY, MINNESOTA
William J. Nee, Mayor
Shirley G. Haapala, Clerk