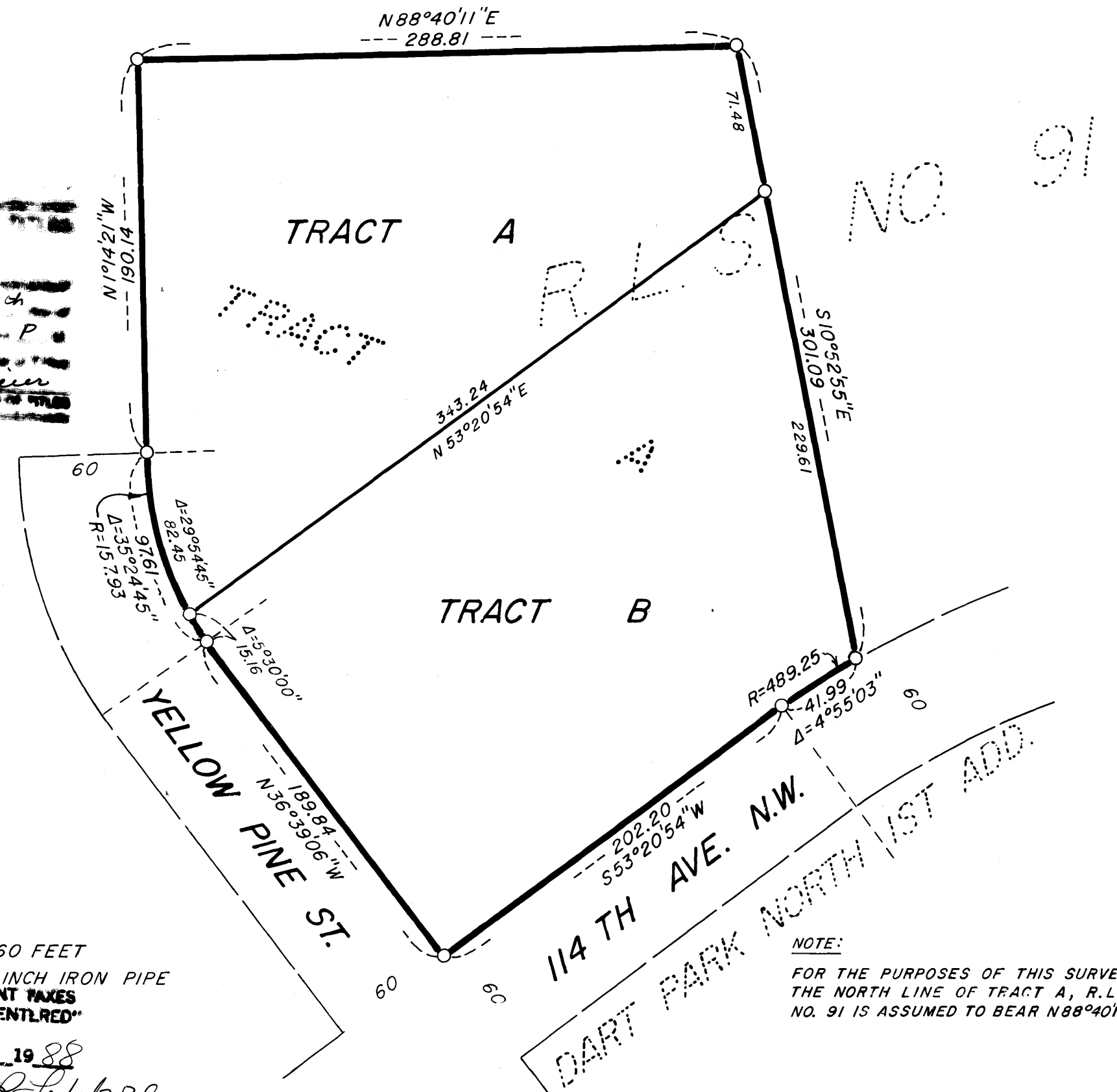


REGISTERED LAND SURVEY NO. 105  
ANOKA COUNTY, MINNESOTA

173170

March 88 4 P  
Katherine Beer



SCALE: 1 INCH = 60 FEET

O DENOTES 1/2 INCH IRON PIPE  
NO DELINQUENT TAXES  
AND TRANSFER ENTRIES

March 9 19 88  
Charles R. Fiebert  
Auditor, Anoka  
BY Donald M. Sawyer

I hereby certify that in accordance with the provisions of Chapter 508, Minnesota Statutes of 1949, as amended, I have surveyed the following described tract of land in the County of Anoka and State of Minnesota, to wit:

Tract A, REGISTERED LAND SURVEY NO. 91.

I hereby certify that the survey shown herein is a correct delineation of said survey. Dated this 1st day of March, 19 88.

Jeffrey N. Gaine, Land Surveyor, Minn. Reg. No. 12251

This Registered Land Survey has been approved and accepted by the Planning Commission of Coon Rapids, Minnesota at a regular meeting thereof held this 18th day of February, 19 88.

Dorina M. Naeve, Chairman

This Registered Land Survey has been approved and accepted by the City Council of Coon Rapids, Minnesota at a regular meeting thereof held this 10th day of March, 19 88.

Robert B. Lewis, Mayor; Betty Backes, Clerk

Checked and approved this 7th day of March, 19 88.

M. D. [Signature], Anoka County Surveyor

ANNEXED TO THE TAXES  
PAYABLE IN THE YEAR 1988 ON THE  
LANDS DESCRIBED WITHIN ARE PAID  
[Signature] Anoka County Treasurer

CAME & ASSOCIATES  
LAND SURVEYORS, INC.