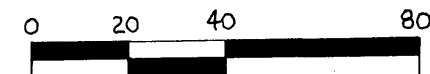


REGISTERED LAND SURVEY NO. 108

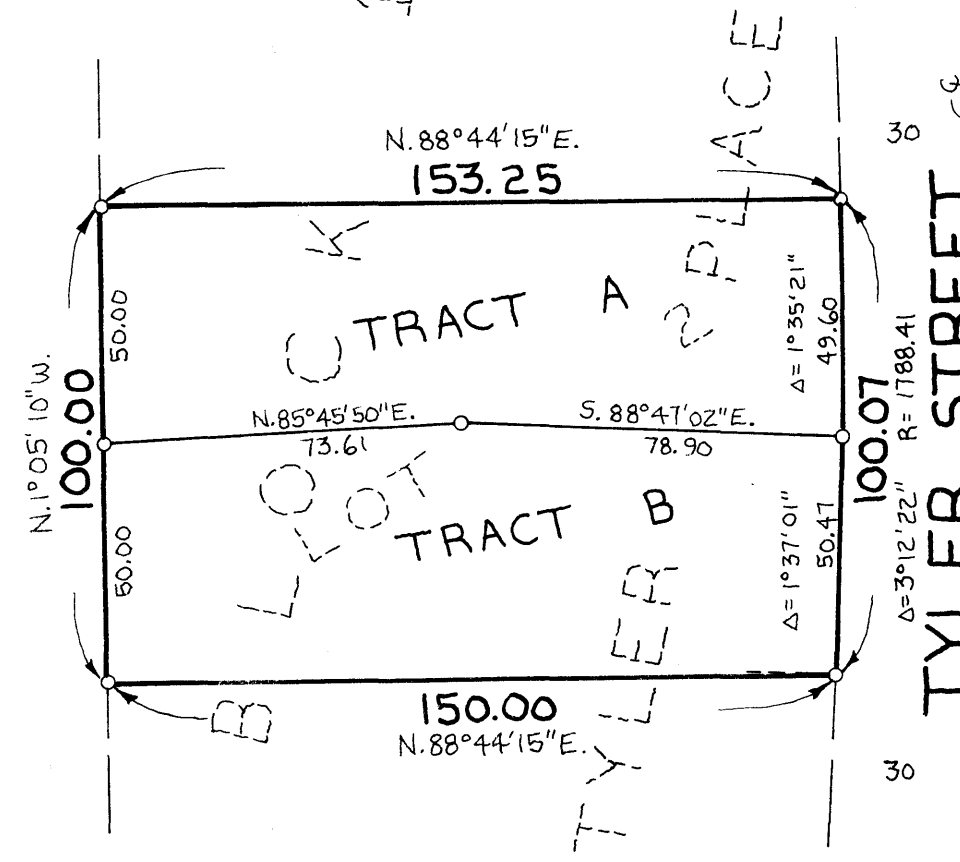
ANOKA COUNTY, MINNESOTA

181292

Office of REGISTRAR OF FILES
 STATE OF MINNESOTA
 COUNTY OF ANOKA
 I hereby certify that the above described tract of land was filed in this office on the 1st day of December 1988 at 12:15 P.M.
 By Katharine Bunn



SCALE IN FEET
 SCALE ~ 1 INCH = 40 FEET



o DENOTES IRON MONUMENT

FOR THE PURPOSES OF THIS REGISTERED LAND SURVEY, THE NORTH LINE OF TRACT A HAS AN ASSUMED BEARING OF N.88°44'15"E.

"NO DELINQUENT TAXES AND TRANSFER ENTLRED"

December 1, 1988
Charles R. Schepere
 Auditor, Anoka County
 BY James Schultz
 Deputy

I HEREBY CERTIFY THAT THE TAXES PAYABLE IN THE YEAR 1988 ON THE LANDS DESCRIBED WITHIN ARE
Donald C. Bailey
 Anoka County Treasurer
J. Henry - Deputy

Companies
SUBURBAN ENGINEERING, INC.
 6875 Highway 65 N.E. P.O. Box 32308 Mpls, MN 55432
 12203 Nicollet Ave. So. Burnsville, MN 55337

I hereby certify that in accordance with the provisions of Chapter 508, Minnesota Statutes of 1949, as amended, I have surveyed the following described tract of land in the County of Anoka and State of Minnesota to wit:

Lot 2, Block 1, Tyler Place

This is a correct delineation of the survey dated this 30th day of November, 1988.

Howard W. Rogers
 Howard W. Rogers, Land Surveyor
 Minnesota Registration No. 10945

Checked and approved this 1st day of DECEMBER, 1988.

MERLYN D. ANDERSON by Larry D. Rom
 Anoka County Surveyor deputy

This Registered Land Survey has been approved and accepted by the City Council of Blaine at a regular meeting thereof held this 6th day of October, 1988.

CITY COUNCIL OF BLAINE, MINNESOTA
Mayor Mayor
Joyce Rivistal Clerk
 By Mary Petron, Deputy