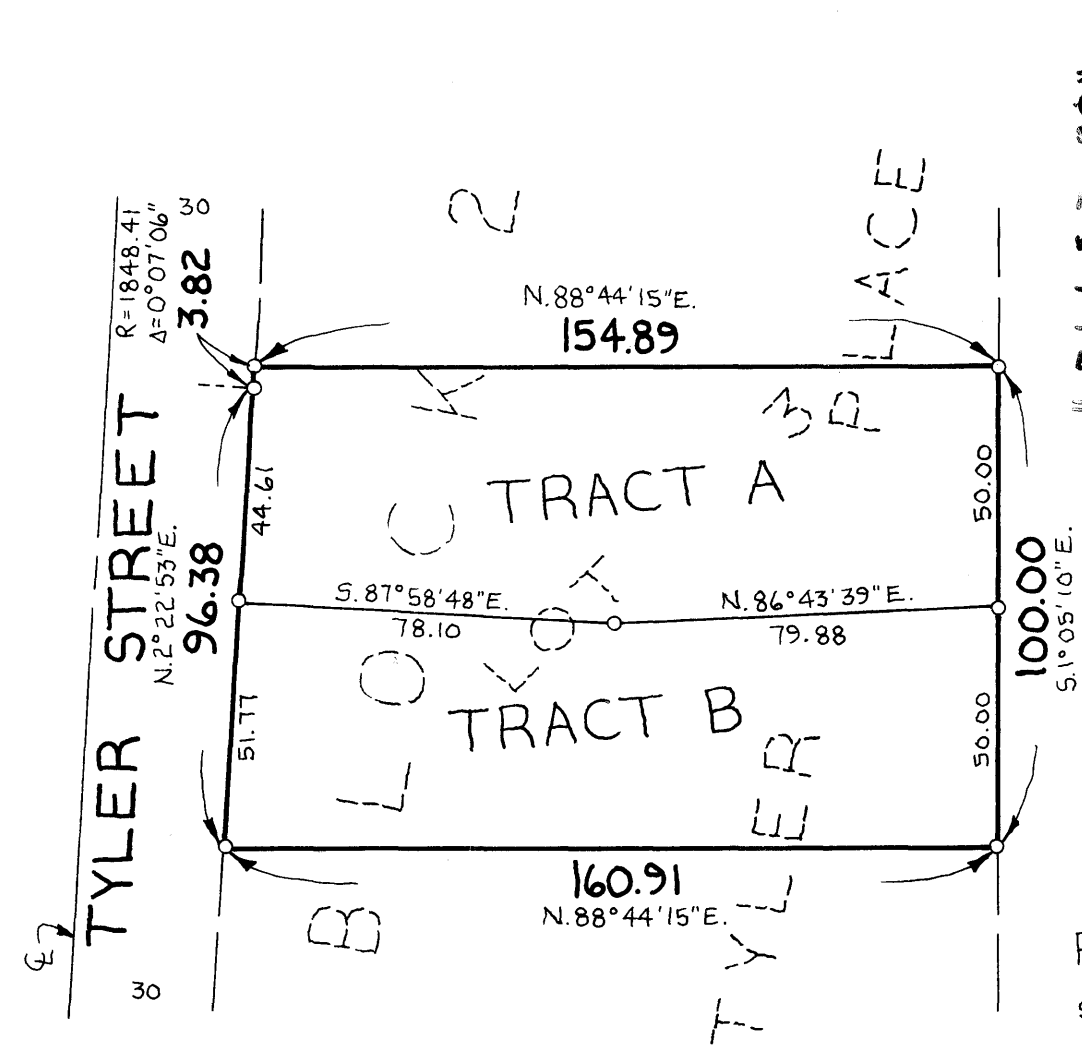


REGISTERED LAND SURVEY NO. 109

ANOKA COUNTY, MINNESOTA

181293



REGISTRAR OF DEEDS
 COUNTY OF ANOKA
 STATE OF MINNESOTA
 I have with me this day of Dec 1988 at 12:15 P.M.
 By Katherine Beise
 DEPUTY REGISTRAR OF DEEDS

0 20 40 80
 SCALE IN FEET
 SCALE ~ 1 INCH = 40 FEET

o DENOTES IRON MONUMENT
 FOR THE PURPOSES OF THIS REGISTERED LAND SURVEY, THE NORTH LINE OF TRACT A HAS AN ASSUMED BEARING OF N. 88° 44' 15" E.

"NO DELINQUENT TAXES AND TRANSFER ENTLED"
 December 1, 1988
 Charles R. Leselbre
 Auditor, Anoka County
 By Donald C. Bailey
 Deputy

NO DELINQUENT TAXES
 PAID ON THE
 LANDS DESCRIBED HEREIN
 1988
 Donald C. Bailey
 Anoka County Treasurer
 L. Henry - Deputy

Companies
SUBURBAN ENGINEERING, INC.
 6875 Highway 65 N.E. P.O. Box 32308 Mpls., MN 55432
 12203 Nicollet Ave. So. Burnsville, MN 55337

I hereby certify that in accordance with the provisions of Chapter 508, Minnesota Statutes of 1949, as amended, I have surveyed the following described tract of land in the County of Anoka and State of Minnesota to wit:

Lot 3, Block 2, Tyler Place

This is a correct delineation of the survey dated this 30th day of November, 1988.

Howard W. Rogers
 Howard W. Rogers, Land Surveyor
 Minnesota Registration No. 10945

Checked and approved this 1st day of DECEMBER, 1988.

MERLYN D. ANDERSON by Larry D. Ahn
 Anoka County Surveyor deputy

This Registered Land Survey has been approved and accepted by the City Council of Blaine at a regular meeting thereof held this 6th day of October, 1988.

CITY COUNCIL OF BLAINE, MINNESOTA
Shige Tinkelberg, Mayor
Joseph Divisato, Clerk
 By Mary Peterson, Deputy