

198301

OFFICIAL PLAT

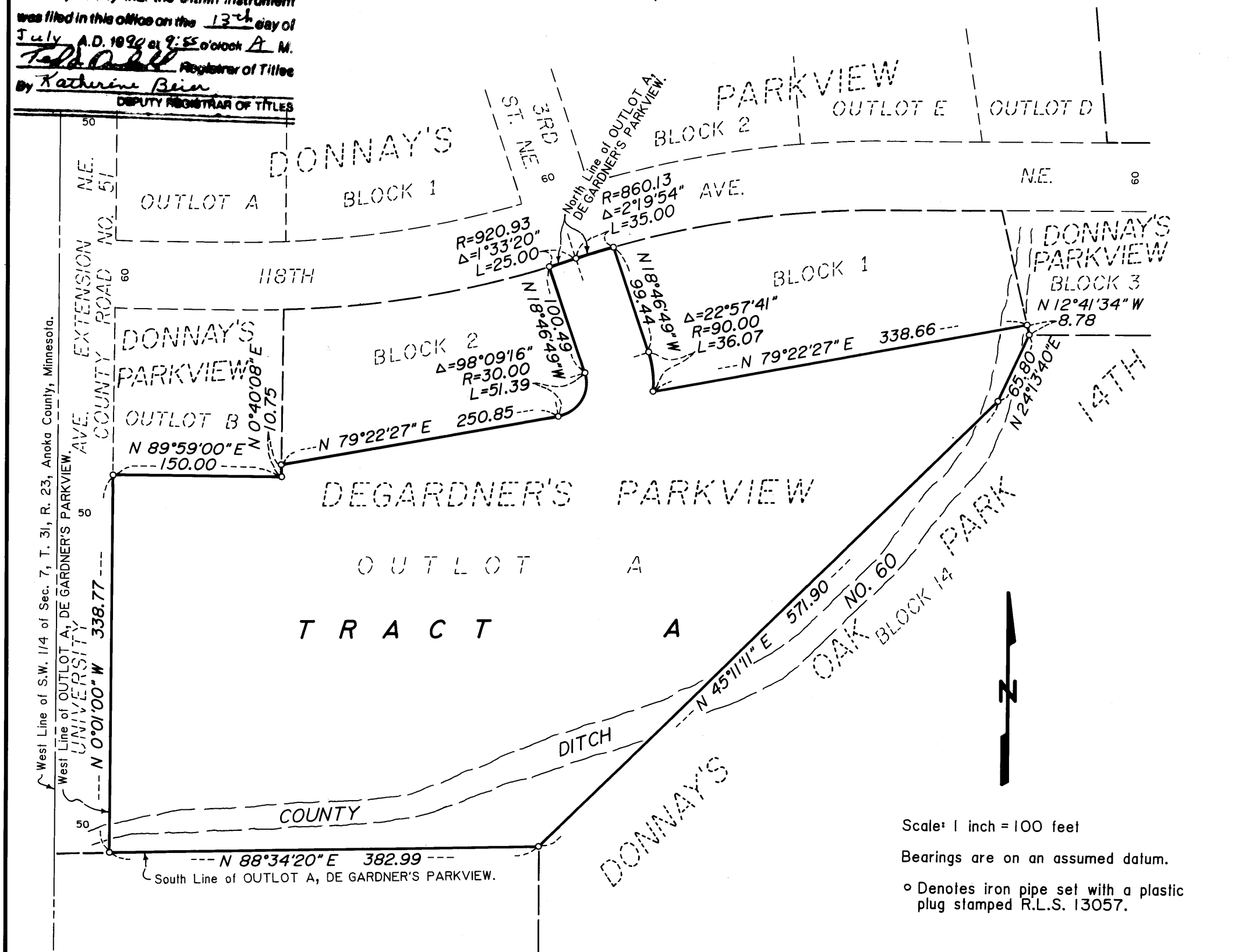
Book 4 of PLS page 13

Office of REGISTRAR OF TITLES
 STATE OF MINNESOTA
 COUNTY OF ANOKA

I hereby certify that the within instrument
 was filed in this office on the 13th day of
 July A.D. 1990 at 9:55 o'clock A.M.
 By Katharine Bein Registrar of Titles
 Deputy REGISTRAR OF TITLES

REGISTERED LAND SURVEY NO. 118

ANOKA COUNTY, MINNESOTA



Scale: 1 inch = 100 feet
 Bearings are on an assumed datum.
 ° Denotes iron pipe set with a plastic plug stamped R.L.S. 13057.

I hereby certify that in accordance with the provisions of Chapter 508, Minnesota Statutes of 1949, as amended, I have surveyed the following described property situated in the County of Anoka, State of Minnesota, to-wit:

Outlot A, DEGARDNER'S PARKVIEW.

That the survey shown hereon is a correct delineation of said survey.

Dated this 19th day of April, 1990.

I HEREBY CERTIFY THAT THE TAXES
 PAYABLE IN THE YEAR 1990 ON THE
 LANDS DESCRIBED WITHIN ARE PAID

Donald C. Bailey
 Anoka County Treasurer
Mary Ann Muller - Deputy

Lynn P. Caswell
 Lynn P. Caswell, Land Surveyor
 Minn. Lic. No. 13057

"NO DELINQUENT TAXES AND TRANSFER ENTLRED"

July 13 1990

Charles K. Rebolson
 Auditor, Anoka County

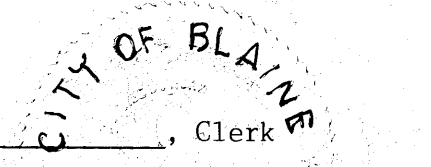
BY Jeff S. Keming
 Deputy

This Registered Land Survey was approved and accepted by the City Council of the City of Blaine, Minnesota, at a regular meeting held this 7th day of September, 1989.

By: Myra Tinkler, Mayor Attest: Joyce Turist, Clerk

Checked and approved this 27th day of APRIL, 1990.

Merlyn D. Anderson
 Merlyn Anderson, Anoka County Surveyor
 Land Surveyor, Minn. Lic. No. 13596



JOHN OLIVER & ASSOCIATES, INC.
 222 Main Street
 Elk River, Minnesota 55330
 (612) 441-2072

Land Surveying
 Subdivision Design
 Site Planning