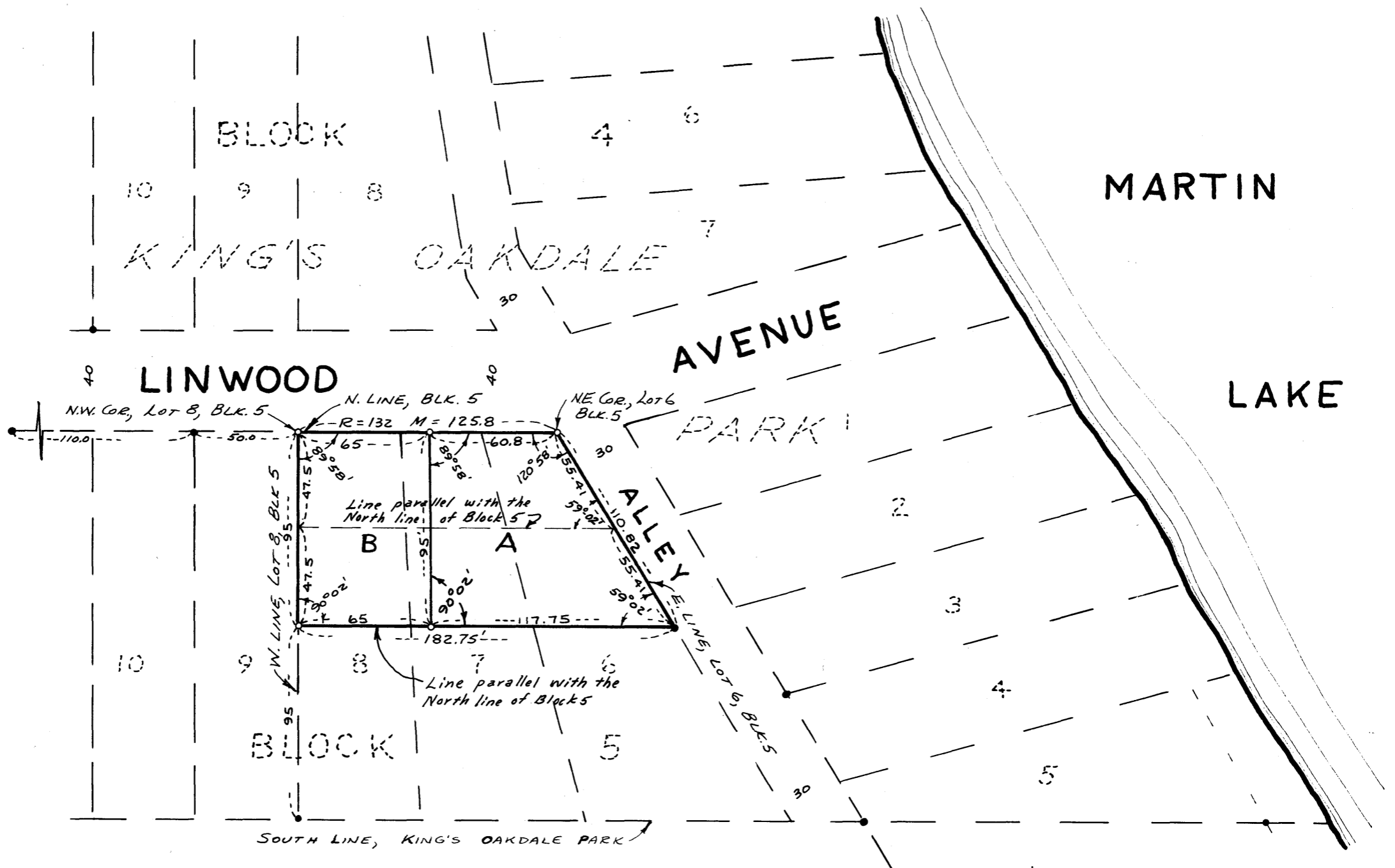


REGISTERED LAND SURVEY No. 18

PART OF LOTS 6, 7 & 8, BLOCK 5 OF KING'S OAKDALE PARK, ANOKA CO., MINNESOTA
LOCATED IN PART OF GOV'T LOT 5, SECTION 33, TOWNSHIP 34 NORTH, RANGE 22 WEST



- INDICATES IRON MONUMENT INPLACE
- INDICATES IRON MONUMENT SET
- M INDICATES FIELD MEASUREMENT
- R INDICATES RECORDED MEASUREMENT

SCALE: 1 INCH = 60 FEET



HULT LAND SURVEYING
FOREST LAKE, MINNESOTA

SEPTEMBER 1969

SHEET 1 OF 2 SHEETS

REGISTERED LAND SURVEY No. 18

PART OF LOTS 6, 7 & 8, BLOCK 5 OF KING'S OAKDALE PARK, ANOKA CO., MINNESOTA
LOCATED IN PART OF GOV'T LOT 5, SECTION 33, TOWNSHIP 34 NORTH, RANGE 22 WEST

I hereby certify that in accordance with the provisions of Chapter 508, Minnesota Statutes 1949, as amended, I have surveyed the following described property in the County of Anoka, State of Minnesota:

That part of Lots 6, 7, and 8, Block 5, King's Oakdale Park, according to the map or plat thereof on file and of record in the office of the Register of Deeds, Anoka County, Minnesota, described as follows:

Commencing at the Northwest corner of Lot 8, Block 5, said Addition; thence East along the North line of Lots 6, 7 and 8, to the Northeast corner of Lot 6, Block 5, said Addition; thence Southeasterly along the Easterly line of Lot 6, 55.41 feet; thence Westerly parallel with the North line of Lots 6, 7 and 8, Block 5, said Addition to a point on the West line of Lot 8, 47.5 feet South of the Northwest corner thereof; thence North along the West line of Lot 8, 47.5 feet to the point of beginning.

ALSO, that part of Lots 6, 7, and 8, Block 5, King's Oakdale Park, according to the map or plat thereof on file and of record in the office of the Register of Deeds, Anoka County, Minnesota, described as follows:

Commencing at the Northwest corner of Lot 8, Block 5, said addition; thence South along the West line of Lot 8, 95 feet to the point of beginning of the tract to be described; thence East parallel with the North line of Lots 6, 7 and 8 to a point on the Easterly line of Lot 6, 110.82 feet from the Northeast corner of Lot 6; thence Northwesterly along the Easterly line of Lot 6, 55.41 feet; thence West parallel with the North line of Lots 6, 7 and 8 to the West line of Lot 8; thence South along the West line of Lot 8 to the point of beginning.

I hereby certify that this plat is a correct delineation of said survey as made by me. Dated this 30th day of SEPTEMBER, 1969.

Don C. Hult
Don C. Hult, Minnesota Registered Land Surveyor
Registration No. 6617

At a meeting of the Town Board of the Township of Linwood, Anoka County, Minnesota, held on the 14 day of October, 1969, the annexed plat was approved and accepted.

Frank Gabriel
Board Chairman

Albert Salanter
Town Clerk

This plat was approved and accepted by the Board of County Commissioners of the County of Anoka, State of Minnesota, at a regular meeting held this 28th day of October, 1969.

Wm. Peterson
Chairman

Kenneth W. Campbell
County Auditor

This plat was approved as to form and execution on this 12th day of November, 1969.

by Robert W. Johnson
County Attorney, Anoka County, Minnesota

This plat was checked and approved on this 28th day of October, 1969.

Robert W. Anderson
County Surveyor, Anoka County, Minnesota

Recommended for approval this 28th day of October, 1969.

E. J. Lundberg
County Highway Engineer, Anoka County, Minnesota

I HEREBY CERTIFY THAT THE TAXES PAYABLE IN THE YEAR 1969 ON THE LANDS DESCRIBED WITHIN ARE PAID.

Robert A. Peterson
Anoka County Treasurer

55396

Office of REGISTRAR OF TITLES
STATE OF MINNESOTA
COUNTY OF ANOKA

I hereby certify that the within instrument was filed in this office on the 13 day of NOV 13 1969 A.D. 1969 at 3 o'clock P.M.
Ted J. Omdahl Registrar of Titles
By Allen Boettcher DEPUTY REGISTRAR OF TITLES

TAXES PAID

November 13 1969
Kenneth W. Campbell
Auditor, Anoka County
By Howard K. King Deputy

1400 B

SHEET 2 OF 2 SHEETS