

REGISTERED LAND SURVEY NO. 213  
ANOKA COUNTY, MINNESOTA

CITY OF COON RAPIDS  
COUNTY OF ANOKA  
SEC. 8, TWP. 31, RGE. 24  
OFFICIAL PLAT

I hereby certify that, in accordance with the provisions of Chapter 508, Minnesota Statutes of 1949, as amended, I have surveyed the following described property situated in the County of Anoka and State of Minnesota to wit:

Lot 2, Block 1, RIVERDALE COMMONS FIFTH ADDITION, according to the recorded plat thereof, Anoka County, Minnesota.

I hereby certify that this Registered Land Survey is a correct delineation of said survey.

Dated this 16<sup>th</sup> day of April, 2002

Kurt M. Kisch  
Kurt M. Kisch, Licensed Land Surveyor  
Minnesota License No. 23968

COON RAPIDS, MINNESOTA

This Registered Land Survey was approved by the Planning and Zoning Commission of the City of Coon Rapids, Anoka County, Minnesota, this 21<sup>st</sup> day of February, 2002.

By: Tom Greenwood Vice  
Chairman

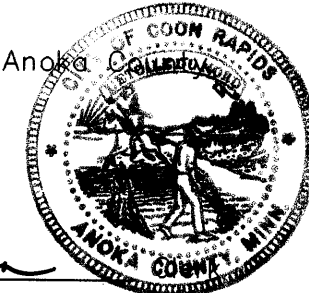
COON RAPIDS, MINNESOTA

This Registered Land Survey was approved and accepted by the City Council of the City of Coon Rapids, Anoka County, Minnesota, this 3<sup>rd</sup> day of March, 2002.

CITY OF COON RAPIDS, MINNESOTA

By: Steve M. Cully Mayor

By: Jon R. Anderson



SURVEY DIVISION, Anoka County, Minnesota

This Registered Land Survey has been checked and approved this 13<sup>th</sup> day of May, 2002

Anoka County Surveyor

By: Larry D. Hain Deputy

I HEREBY CERTIFY THAT THE CURRENT AND DELINQUENT TAXES ON THE LANDS DESCRIBED WITHIN ARE PAID AND THE TRANSFER IS ENTERED May 15, 2002  
MAUREEN J. DEVINE  
PROPERTY TAX ADMINISTRATOR  
BY: [Signature]  
DEPUTY PROPERTY TAX ADMINISTRATOR

Office of REGISTRAR OF TITLES  
STATE OF MINNESOTA 397828.0  
COUNTY OF ANOKA  
I hereby certify that the within instrument was filed in this office on MAY 15 2002 at 8:50 o'clock A M  
Maureen J. Devine, Registrar of Titles  
By: GJK  
Deputy Registrar of Titles



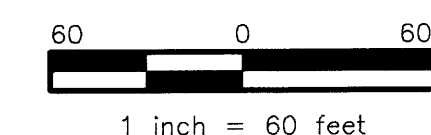
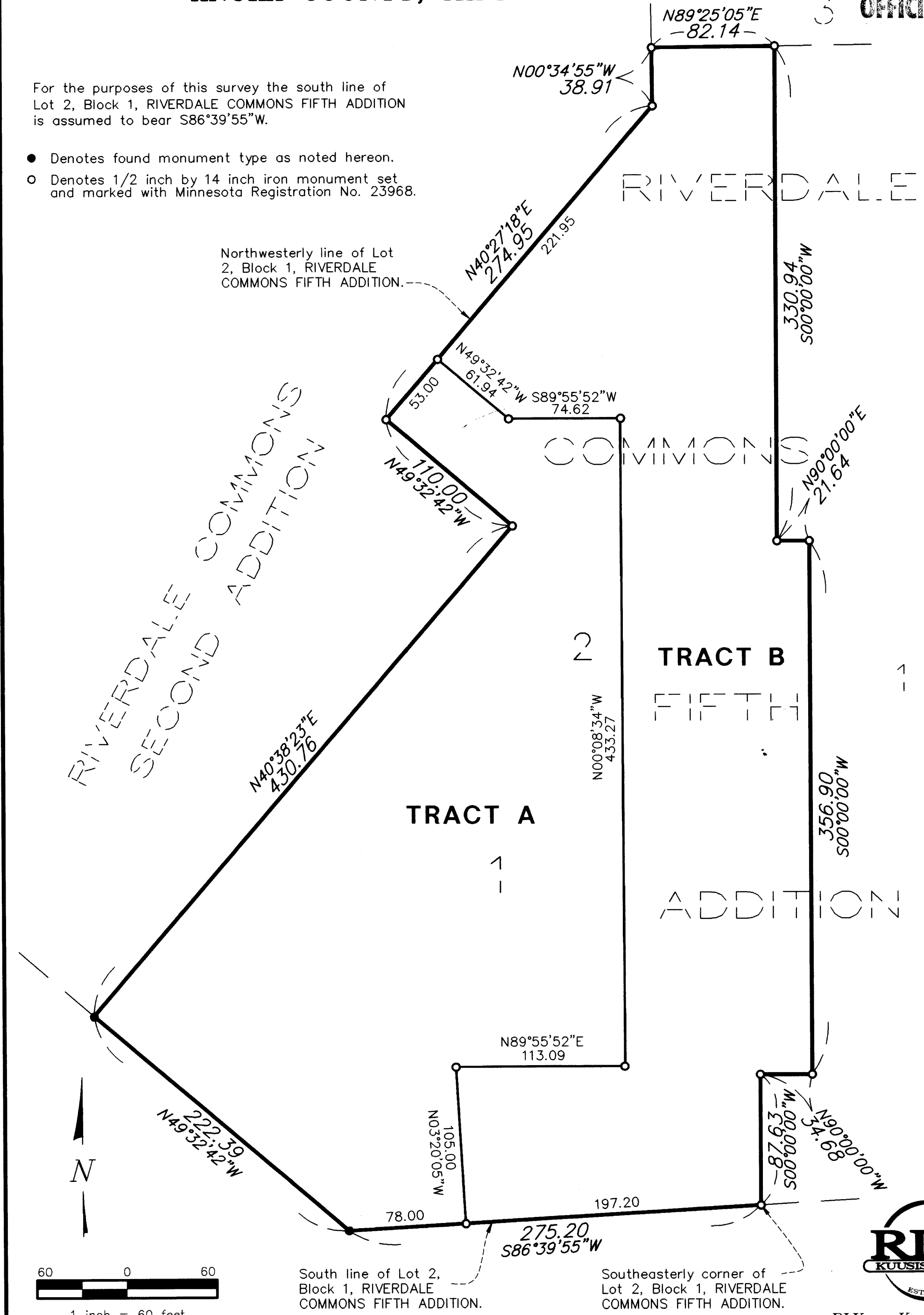
2002060850 \$159.50 RLK - Kuusisto, Ltd.

REGISTERED LAND SURVEY NO. 213  
ANOKA COUNTY, MINNESOTA

CITY OF COON RAPIDS  
COUNTY OF ANOKA  
SEC. 8, TWP. 31, RGE. 24  
OFFICIAL PLAT

For the purposes of this survey the south line of Lot 2, Block 1, RIVERDALE COMMONS FIFTH ADDITION is assumed to bear S86°39'55"W.

- Denotes found monument type as noted hereon.
- Denotes 1/2 inch by 14 inch iron monument set and marked with Minnesota Registration No. 23968.



2002060850 \$159.50 RLK - Kuusisto, Ltd.