

REGISTERED LAND SURVEY NO. 216

OFFICIAL PLAT

Bk 6 of RLS, pg 36

CITY OF COON RAPIDS
COUNTY OF ANOKA
SEC. 5, T. 31, R. 24

I hereby certify that, in accordance with the provisions of Chapter 508, Minnesota Statutes of 1949, as amended, I have surveyed the following described property, in the County of Anoka, State of Minnesota, to wit:

Lots 14 and 15, Block 1, RIVERDALE VILLAGE, according to the recorded plat thereof, Anoka County, Minnesota.

I hereby certify that this Registered Land Survey is a correct delineation of said survey. Dated this 16th day of October, 2002.

By Martin J. Weber
Martin J. Weber, Land Surveyor
Minnesota License No. 12043

COON RAPIDS, MINNESOTA

This Registered Land Survey was approved by the Planning Commission of the City of Coon Rapids, Minnesota, this 5th day of August, 2002.

PLANNING COMMISSION OF COON RAPIDS, MINNESOTA

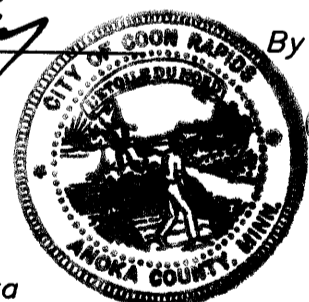
By Doona M. Name

COON RAPIDS, MINNESOTA

This Registered Land Survey was approved and accepted by the City Council of Coon Rapids, Minnesota, at a regular meeting thereof held this 2nd day of September, 2002.

CITY COUNCIL OF COON RAPIDS, MINNESOTA

By John M. Carley Mayor
By Joan A. Anderson Clerk



SURVEY SECTION, Anoka County, Minnesota

Pursuant to MINN. STAT. Sec 383B.565 (1969), this Registered Land Survey has been approved this 21st day of OCTOBER, 2002.

Anoka County Surveyor

By Darryl J. ...

HEREBY CERTIFY THAT THE CURRENT AND DELINQUENT TAXES ON THE LANDS DESCRIBED IN THIS PLAT AND THE TRANSFER IS PAID.
NOV 17, 2002
LAUREN J. DEVINE
PROPERTY TAX ADMINISTRATOR, OR
BY S. Culver
DEPUTY PROPERTY TAX ADMINISTRATOR

Office of REGISTRAR OF TITLES
STATE OF MINNESOTA 412202.0
COUNTY OF ANOKA
I hereby certify that the within instrument was filed in this office on Nov 13 2002 at 2:45 o'clock P.M.
Maureen J. Devine, Registrar of Titles
By JMD
Deputy Registrar of Titles

WESTWOOD
Professional Services, Inc.

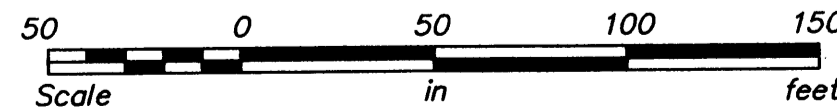
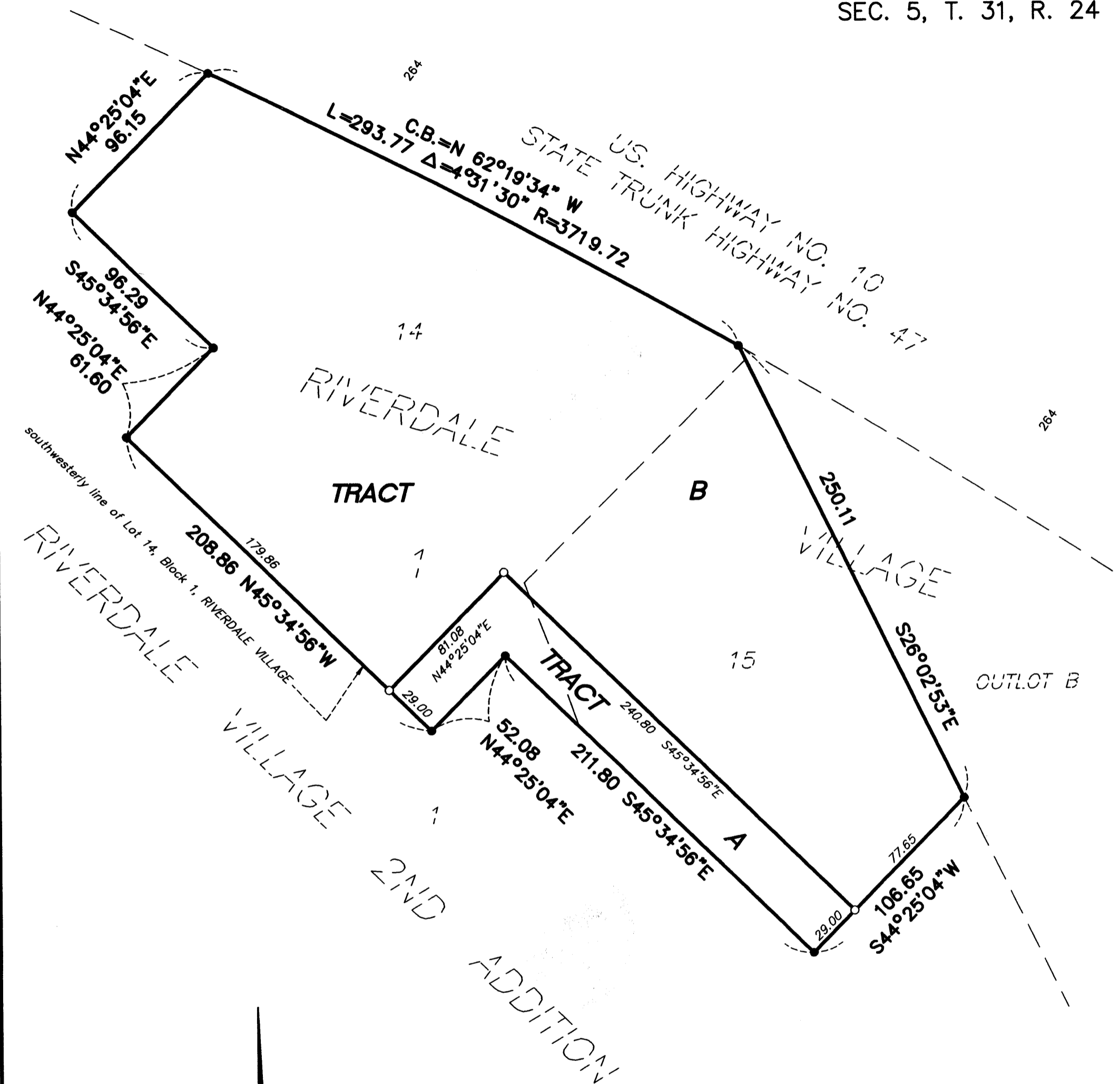
2002139611 \$160.00

REGISTERED LAND SURVEY NO. 216

OFFICIAL PLAT

Bk 6 of RLS, pg 36

CITY OF COON RAPIDS
COUNTY OF ANOKA
SEC. 5, T. 31, R. 24



- Denotes iron monument set
- Denotes iron monument found.

For the purposes of this Registered Land Survey, the southwesterly line of Lot 14, Block 1, RIVERDALE VILLAGE, is assumed to have a bearing of N 45°34'56" W.

WESTWOOD
Professional Services, Inc.

2002139611 \$160.00