

OFFICIAL PLAT

REGISTERED LAND SURVEY NO. 242

BK 7 of RLS pg. 13

CITY OF BLAINE  
ANOKA COUNTY, MINNESOTA  
SEC. 22, T. 31, R. 23

I hereby certify that in accordance with the provisions of Chapter 508, Minnesota Statutes of 1949, as amended, I have surveyed the following described property situated in the County of Anoka, State of Minnesota, to wit:

Tract A, REGISTERED LAND SURVEY NO. 225, Anoka County, Minnesota.

I hereby certify that the survey shown hereon is a correct delineation of said survey. Dated this 27<sup>th</sup> day of FEBRUARY, 2006.

Kelly L. Jordan  
Kelly L. Jordan, Land Surveyor  
Minnesota License No. 42648

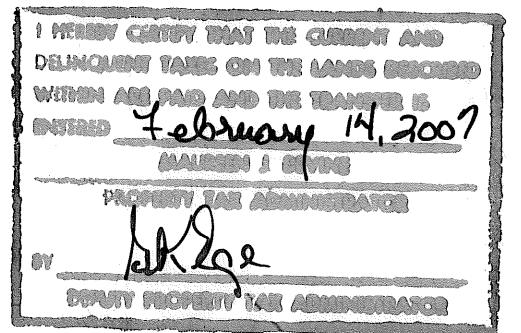
This Registered Land Survey was approved and accepted by the City Council of the City of Blaine, Minnesota, at a meeting held this 15<sup>th</sup> day of September, 2005.

By: Tom Ryan Mayor

Attested: Gene M. Cross Clerk

Checked and approved this 14<sup>th</sup> day of FEBRUARY, 2007.

Larry Hoium  
Larry Hoium, Anoka County Surveyor



490654.001 RLS

Office of Registrar of Titles  
STATE OF MINNESOTA  
COUNTY OF ANOKA  
I hereby certify that the within instrument was  
filed in this office on Feb. 14 2007  
at 9:42 o'clock A.M.  
Mary J. Dugan, Registrar of Titles  
By: CKE  
Deputy Registrar of Titles

\$96.00

JOHN OLIVER & ASSOCIATES, INC.

SHEET 1 OF 2 SHEETS

OFFICIAL PLAT

REGISTERED LAND SURVEY NO. 242

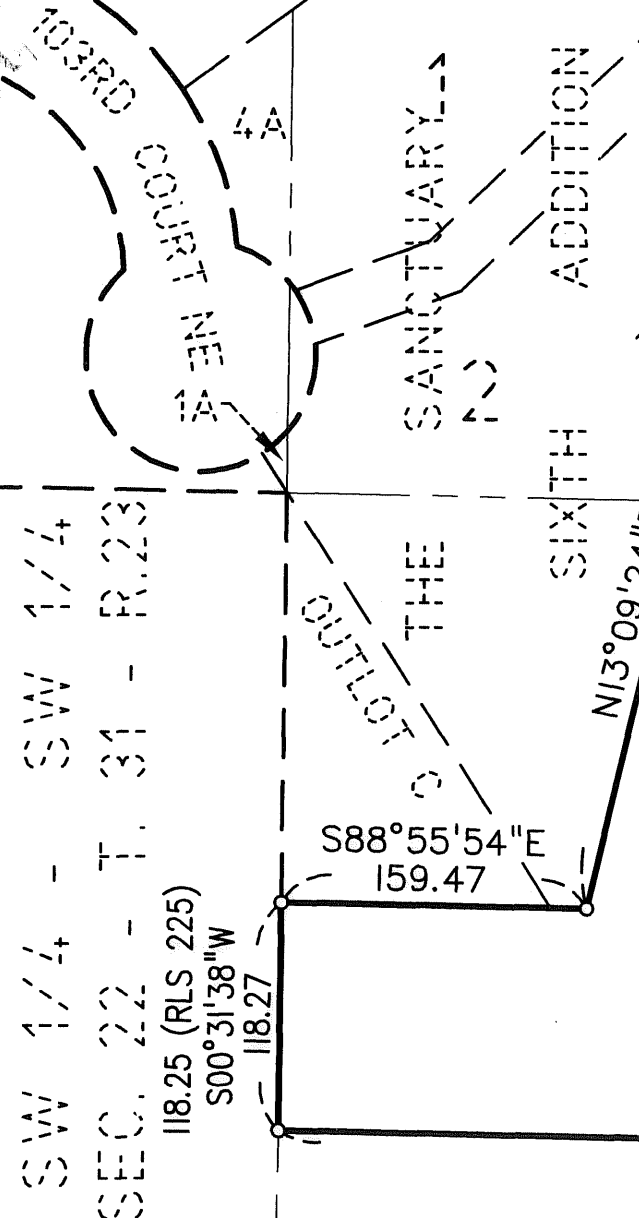
VILLELLA 1 ADDITION BK 7 of RLS pg 13

CITY OF BLAINE  
ANOKA COUNTY, MINNESOTA  
SEC. 22, T. 31, R. 23

- Denotes 1/2 Inch x 14 Inch Iron Pipe Set With A Plastic Cap Marked R.L.S. Number 42648
- Denotes Iron Monument Found

0 100 200 300  
SCALE IN FEET

For the purposes of this survey the North line of Tract A, RLS No. 225 is assumed to bear S88°52'33"E



TRACT B

TRACT A

South Line of the NE 1/4 of the SW 1/4 of Sec. 22, Twp. 31, Rng. 23  
North Line of the North 10 Acres of the SE 1/4 of the SW 1/4 of Sec. 22 Twp. 31, Rng. 23

RLS NO 225

TRACT C  
FLANDERS STREET NE

JOHN OLIVER & ASSOCIATES, INC.

SHEET 2 OF 2 SHEETS