

OFFICIAL PLAT

REGISTERED LAND SURVEY NO. 244

City of Anoka  
County of Anoka  
Section 36, T. 32, R. 25

I hereby certify that in accordance with the provisions of Chapter 508, Minnesota Statutes of 1949, as amended, I have surveyed the following described tract in the County of Anoka and the State of Minnesota.

Outlot A, ANOKA ENTERPRISE PARK EIGHTH ADDITION, Anoka County, Minnesota.

I hereby certify that the survey shown herein is a correct delineation of said survey, dated this 21<sup>ST</sup> day of November, 2007.

Charles R. Christopherson, Land Surveyor, Minnesota License No. 18420

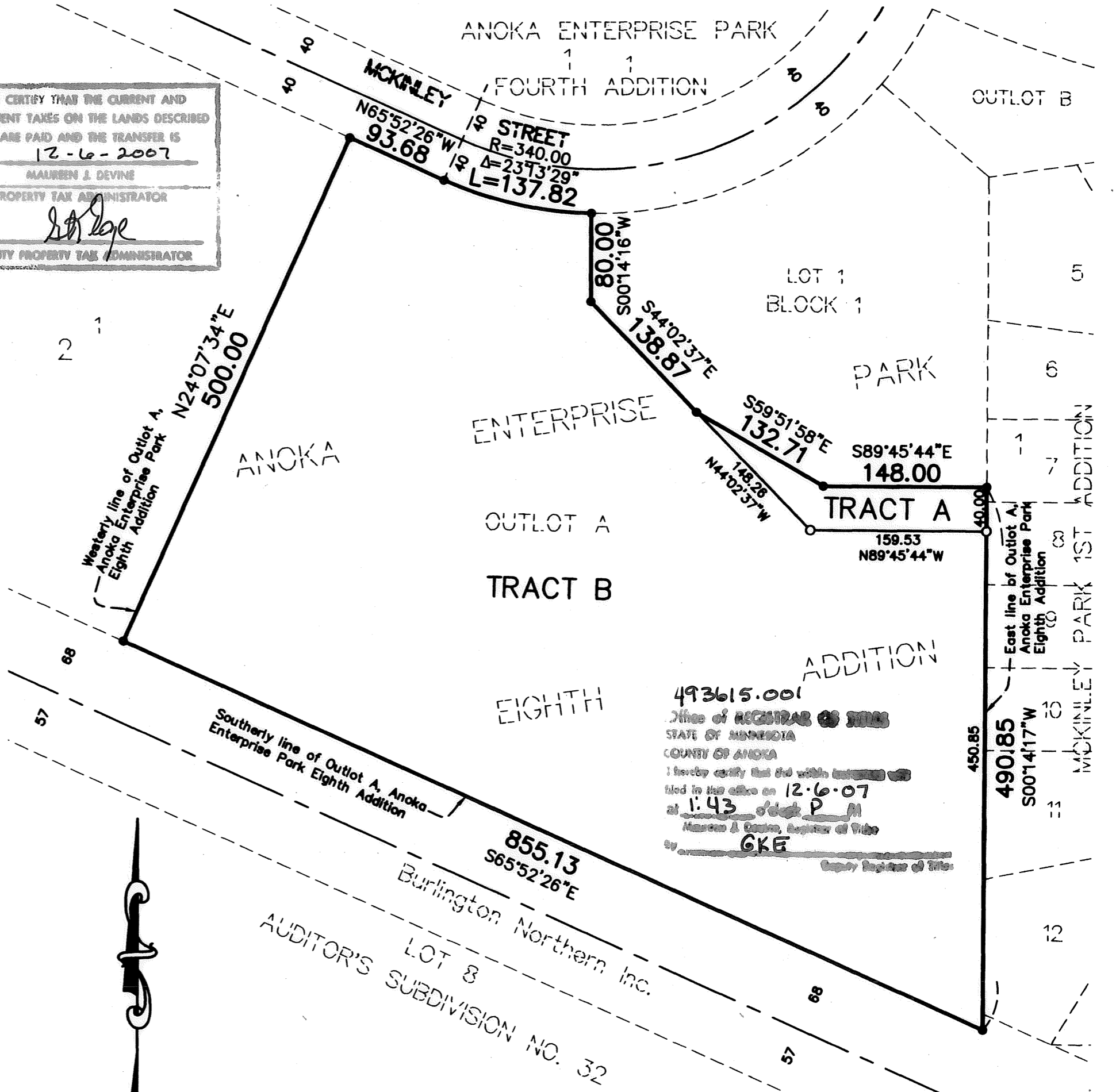
This REGISTERED LAND SURVEY was approved and accepted by the City Council of the City of Anoka at a regular meeting held this 5 day of December, 2007.

By: [Signature] Mayor By: [Signature] Clerk

This REGISTERED LAND SURVEY has been checked and approved this 6<sup>TH</sup> day of December, 2007.

Larry O. Hoium by Charles F. Rutzen, Deputy  
Anoka County Surveyor

I HEREBY CERTIFY THAT THE CURRENT AND DELINQUENT TAXES ON THE LANDS DESCRIBED WITHIN ARE PAID AND THE TRANSFER IS ENTERED 12-6-2007  
ALAN J. DEYNE  
PROPERTY TAX ADMINISTRATOR  
BY: [Signature]  
DEPUTY PROPERTY TAX ADMINISTRATOR



SCALE 100 0 100 200 IN FEET

For the purposes of this Registered Land Survey the east line of Outlot A, Anoka Enterprise Park Eighth Addition is assumed to bear South 00 degrees 14 minutes 17 seconds West

○ Denotes 1/2 inch by 14 inch iron monument set and marked with Minnesota License No. 18420  
● Denotes iron monument found

Hakanson Anderson Assoc., Inc.