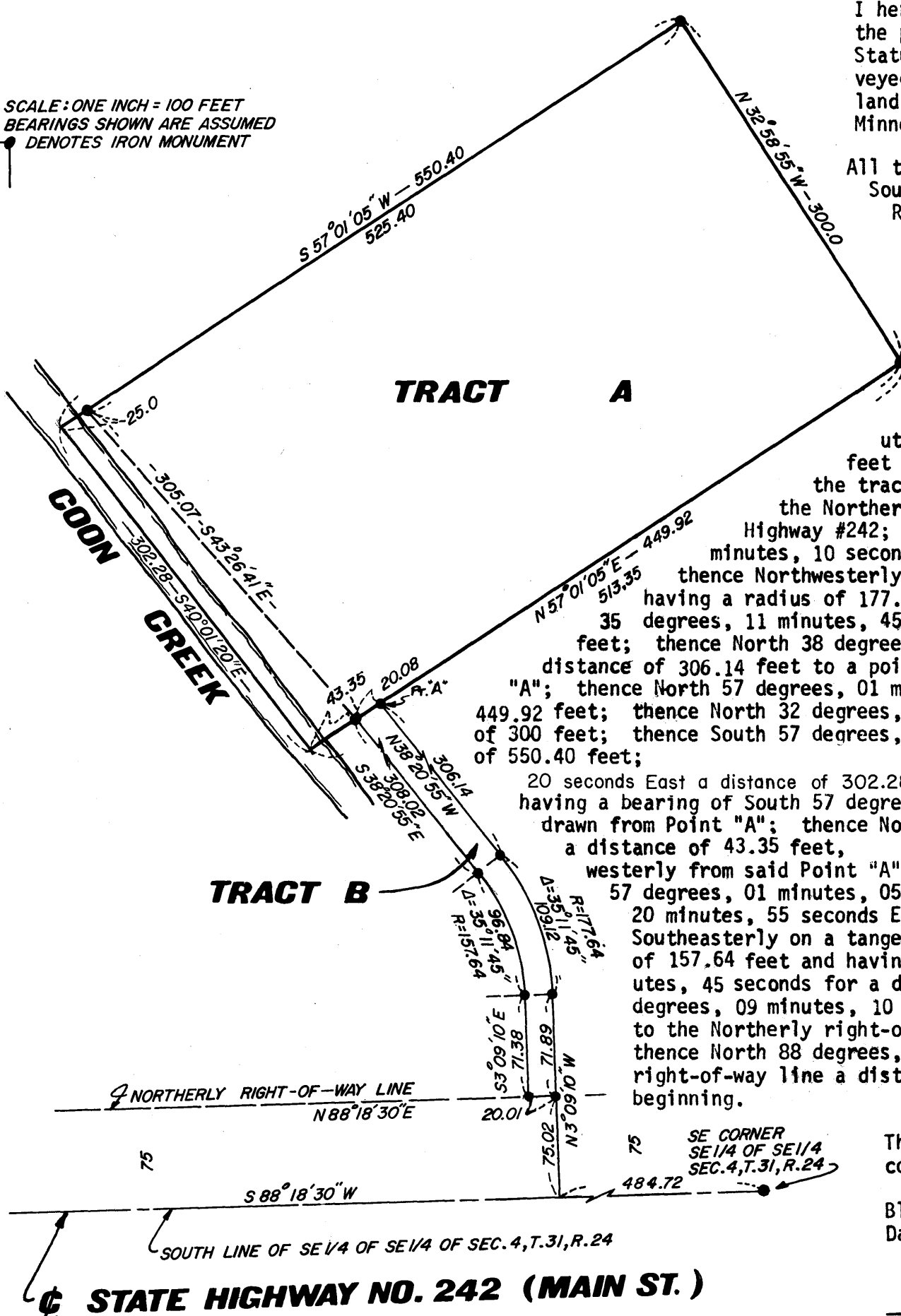


# REGISTERED LAND SURVEY NO. 36

ANOKA COUNTY, MINNESOTA



SCALE: ONE INCH = 100 FEET  
BEARINGS SHOWN ARE ASSUMED  
DENOTES IRON MONUMENT



I hereby certify that in accordance with the provisions of Chapter 508, Minnesota Statutes of 1949, as amended, I have surveyed the following described tract of land in the County of Anoka and State of Minnesota to-wit:

All that part of the Southeast 1/4 of the Southeast 1/4 of Section 4, Township 31, Range 24, Anoka County, Minnesota described as follows: Commencing at a point on the South line of said Southeast 1/4 of the Southeast 1/4, said South line having an assumed bearing of South 88 degrees, 18 minutes, 30 seconds West, distant 484.72 feet West of the Southeast corner of said Southeast 1/4 of the Southeast 1/4; thence North 3 degrees, 09 minutes, 10 seconds West a distance of 75.02 feet to the actual point of beginning of the tract of land to be hereby described and the Northerly right-of-way line of State Trunk Highway #242; thence continue North 3 degrees, 09 minutes, 10 seconds West a distance of 71.89 feet; thence Northwesterly on a tangential curve to the left having a radius of 177.64 feet and having a delta angle of 35 degrees, 11 minutes, 45 seconds for a distance of 109.12 feet; thence North 38 degrees, 20 minutes, 55 seconds West for a distance of 306.14 feet to a point hereinafter referred to as Point "A"; thence North 57 degrees, 01 minutes, 05 seconds East a distance of 449.92 feet; thence North 32 degrees, 58 minutes, 55 seconds West a distance of 300 feet; thence South 57 degrees, 01 minutes, 05 seconds West a distance of 550.40 feet; thence South 40 degrees, 01 minutes, 20 seconds East a distance of 302.28 feet to its intersection with a line having a bearing of South 57 degrees, 01 minutes, 05 seconds West and drawn from Point "A"; thence Northeasterly along last mentioned line a distance of 43.35 feet, to a point 20.08 feet Southwesterly from said Point "A" as measured along line bearing South 57 degrees, 01 minutes, 05 seconds West; thence South 38 degrees, 20 minutes, 55 seconds East a distance of 308.02 feet; thence Southeasterly on a tangential curve to the right having a radius of 157.64 feet and having a delta angle of 35 degrees, 11 minutes, 45 seconds for a distance of 96.84 feet; thence South 3 degrees, 09 minutes, 10 seconds East a distance of 71.38 feet to the Northerly right-of-way line of State Trunk Highway #242; thence North 88 degrees, 18 minutes, 30 seconds East along said right-of-way line a distance of 20.01 feet to the actual point of beginning.

That the survey shown thereon is a correct delineation of said survey.

Blaine, Minnesota  
Dated this 28<sup>th</sup> day of July A.D. 1972

*N. C. Hoium*

Reg. Land Surveyor—Minn. Reg. No. 4427

We hereby certify that the City Council of the City of Coon Rapids, Anoka County, Minnesota duly accepted and approved this Registered Land Survey at a regular meeting thereof held this 23 day of May A.D. 1972.

CITY OF COON RAPIDS, ANOKA COUNTY, MINNESOTA

By *Donald D. Selanderson* Mayor

By *Norman J. Warner* Clerk

Checked and approved this 17<sup>th</sup> day of Aug., 1972 A.D.  
*Roland W. Anderson*  
Anoka County Surveyor

75781

"NO DELINQUENT TAXES AND TRANSFER ENTERED" Office of REGISTRAR OF TITLES  
STATE OF MINNESOTA  
COUNTY OF ANOKA

August 17 1972  
*Charles R. Lofebone*  
Auditor, Anoka County  
I hereby certify that the within instrument was filed in this office on the 17 day of August, 1972 A.D. at 1 o'clock P.M.  
BY *Barbara Altman* Deputy  
By *Edmund J. Omdahl* Registrar of Titles  
*Ellen Bottcher*  
DEPUTY REGISTRAR OF TITLES

**N.C. HOIUM & ASSOCIATES, INC. — Engineers — Surveyors**