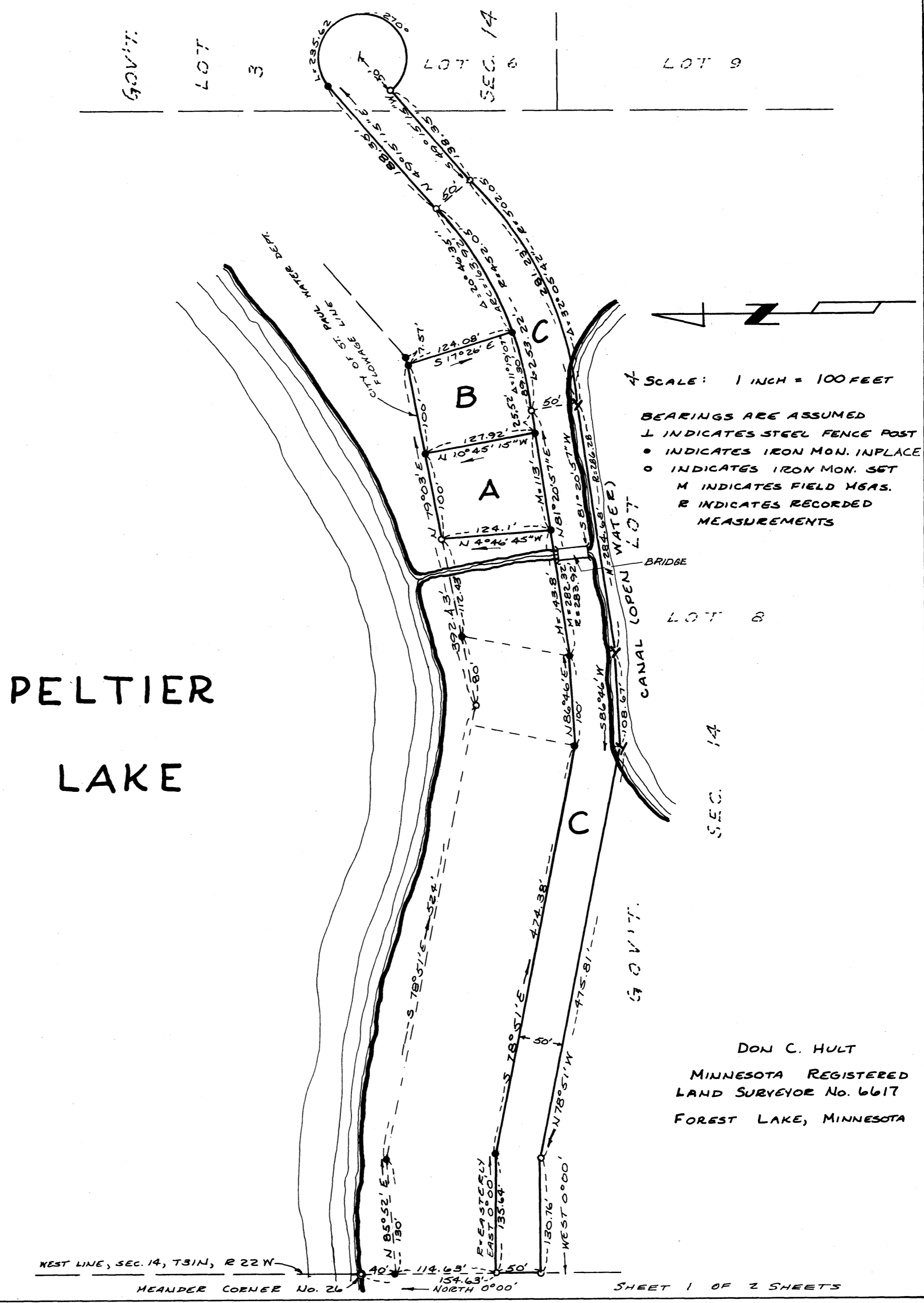


REGISTERED LAND SURVEY No. 5

PART OF LOTS 6 & 8 OF (REVISED) AUDITORS SUBDIVISION No. 47, ANOKA CO., MINNESOTA
LOCATED IN GOV'T. LOTS 3 & 4, SECTION 14, TOWNSHIP 31 NORTH, RANGE 22 WEST



REGISTERED LAND SURVEY No. 5

PART OF LOTS 6 & 8 OF (REVISED) AUDITORS SUBDIVISION No 47, ANOKA CO., MINNESOTA
LOCATED IN GOV'T. LOTS 3 & 4, SECTION 14, TOWNSHIP 31 NORTH, RANGE 22 WEST

I hereby certify that in accordance with the provisions of Chapter 508, Minnesota Statutes 1949, as amended, I have surveyed the following described property in the County of Anoka, State of Minnesota:

That part of Lot 8 of Auditors Subdivision No. 47, Revised, located in Government Lots 3 and 4, Section 14, Township 31 North, Range 22 West, Anoka County, Minnesota, described as follows:

Commencing at a point on the west line of Lot 8, Auditors Subdivision No. 47, Revised, distant 154.63 feet South of Meander Corner No. 26, which point is also the southeast corner of Lot 1, Block 2 of Burke Addition No.1; thence North 0°00', assumed bearing, along said west line, a distance of 114.63 feet to a point on the City of St. Paul Water Department flowage line; thence North 85 degrees 52 minutes East, a distance of 130 feet; thence South 78 degrees 51 minutes East, continuing along said flowage line, a distance of 524 feet; thence North 79 degrees 03 minutes East, continuing along said City of St. Paul Water Department flowage line, a distance of 192.43 feet to the point of beginning; thence continuing North 79 degrees 03 minutes East, along said flowage line, a distance of 200 feet; thence South 17 degrees 26 minutes East, a distance of 124.08 feet to a point on a curve (the tangent of said curve at this point bears South 70 degrees 01 minutes 50 seconds West); thence southwesterly, along said curve concave to the northwest, having a radius of 452.05 feet, central angle of 11 degrees 19 minutes 07 seconds, an arc length of 89.30 feet; thence South 81 degrees 20 minutes 57 seconds West, tangent to said curve, a distance of 138.52 feet; thence North 4 degrees 46 minutes 45 seconds West, a distance of 124.1 feet to the point of beginning, containing 0.6 acre, more or less.

ALSO that part of Lots 8 and 6 of Auditors Subdivision No. 47, Revised, Anoka County, Minnesota, described as follows:

Beginning at a point on the west line of Lot 8, Auditors Subdivision No. 47, Revised, distant 154.63 feet South 0°00' of Meander Corner No. 26; thence East 0°00', a distance of 135.64 feet to a point which is 120.5 feet, measured normal to and southerly from the City of St. Paul Water Department flowage line; thence South 78 degrees 51 minutes East, parallel with said flowage line, a distance of 474.38 feet; thence North 86 degrees 46 minutes East, a distance of 100 feet; thence North 81 degrees 20 minutes 57 seconds East, a distance of 283.92 feet; thence northeasterly along a tangent curve concave to the northwest, having a radius of 452.05 feet, central angle of 32 degrees 05 minutes 42 seconds, an arc length of 253.22 feet; thence North 49 degrees 15 minutes 15 seconds East, tangent to said curve, a distance of 188.35 feet; thence along a tangent curve concave to the west, having a radius of 50 feet, central angle of 270 degrees, an arc length of 235.62 feet; thence South 49 degrees 15 minutes 15 seconds West, a distance of 138.35 feet; thence southwesterly, along a tangent curve concave to the northwest, having a radius of 502.05 feet, central angle of 32 degrees 05 minutes 42 seconds, an arc length of 281.23 feet; thence South 81 degrees 20 minutes 57 seconds West, tangent to said curve, a distance of 286.28 feet; thence South 86 degrees 46 minutes West, a distance of 108.67 feet; thence North 78 degrees 51 minutes West, a distance of 475.81 feet; thence West 0°00', a distance of 130.76 feet to the west line of Lot 8, Auditors Subdivision No. 47, Revised; thence North 0°00', along said west line, a distance of 50 feet to the point of beginning, containing 1.8 acre, more or less.

I hereby certify that this plat is a correct delineation of said survey as made by me. Dated this 16TH day of AUGUST, 1968.

Don C. Hult
Don C. Hult, Minnesota Registered Land
Surveyor - Registration No. 6617

This plat was approved and accepted by the Village Council of the Village of Centerville, Anoka County, Minnesota held on the 11 day of Sept, 1968,

Gary B. Barott
Mayor

Robert A. Hapoy
Clerk

MINNESOTA COUNTY REGISTERED LAND SURVEYOR
1968
Robert A. Peterson

TAXES PAID
This 16th day of Sept 1968
Kenneth W. Campbell
Auditor, Anoka County, Minn.
Diane Whelan Deputy

Office of REGISTRAR OF TITLES
STATE OF MINNESOTA
COUNTY OF ANOKA

I hereby certify that the within instrument
was filed in this office on the 16 day of
SEP 16 1968 A.D. 1968 at 3:45 o'clock P.M.

Checked and approved this 13th
day of Sept, 1968 A.D.
Richard W. Anderson
Anoka County Surveyor

Richard W. Anderson Registrar of Titles
Richard W. Anderson DEPUTY REGISTRAR OF TITLES