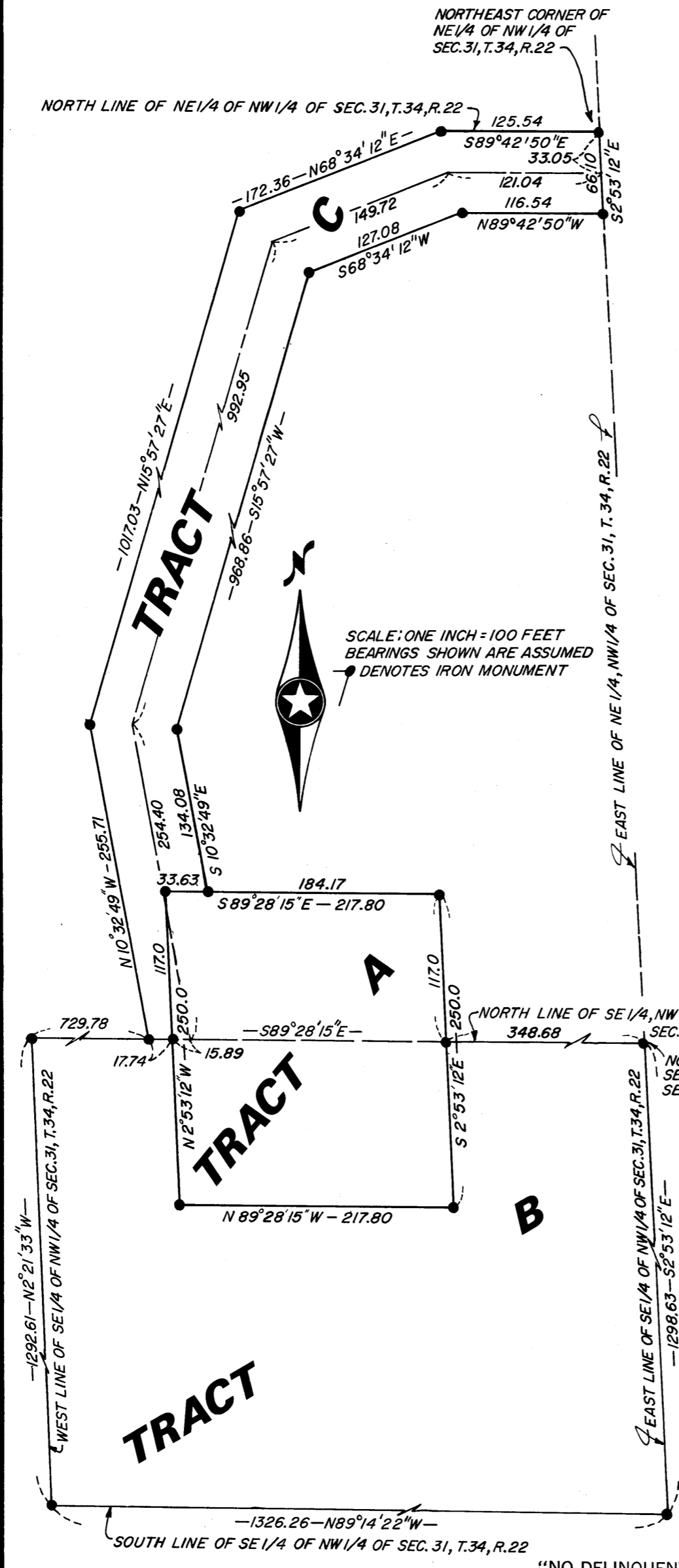


REGISTERED LAND SURVEY NO. 55

ANOKA COUNTY, MINNESOTA



I HEREBY CERTIFY THAT IN ACCORDANCE WITH THE PROVISIONS OF CHAPTER 508, MINNESOTA STATUTES OF 1949, AS AMENDED, I HAVE SURVEYED THE FOLLOWING DESCRIBED TRACT OF LAND IN THE COUNTY OF ANOKA AND STATE OF MINNESOTA TO-WIT: THE WEST 217.8 FEET OF THE EAST 566.48 FEET OF THE SOUTH 117 FEET OF THE NORTH-EAST 1/4 OF THE NORTHWEST 1/4 OF SECTION 31, TOWNSHIP 34, RANGE 22, ANOKA COUNTY, MINNESOTA SAID DISTANCES BEING MEASURED PARALLEL WITH THE SOUTH AND EAST LINES OF SAID NORTHEAST 1/4 OF THE NORTHWEST 1/4; AND THE SOUTHEAST 1/4 OF THE NORTHWEST 1/4 OF SECTION 31, TOWNSHIP 34, RANGE 22, ANOKA COUNTY, MINNESOTA, ALSO A TRACT OF LAND 66 FEET IN WIDTH, 33 FEET ON EACH SIDE OF THE FOLLOWING DESCRIBED CENTERLINE: COMMENCING AT THE NORTHEAST CORNER OF THE NORTHEAST 1/4 OF THE NORTHWEST 1/4 OF SECTION 31, TOWNSHIP 34, RANGE 22; THENCE SOUTH 2 DEGREES, 53 MINUTES, 12 SECONDS EAST ALONG THE EAST LINE OF SAID NORTHEAST 1/4 OF THE NORTHWEST 1/4 A DISTANCE OF 33.05 FEET TO THE ACTUAL POINT OF BEGINNING OF THE TRACT OF LAND TO BE HEREBY DESCRIBED; THENCE NORTH 89 DEGREES, 42 MINUTES, 50 SECONDS WEST A DISTANCE OF 121.04 FEET; THENCE SOUTH 68 DEGREES, 34 MINUTES, 12 SECONDS WEST A DISTANCE OF 149.72 FEET; THENCE SOUTH 15 DEGREES, 57 MINUTES, 27 SECONDS WEST A DISTANCE OF 992.95 FEET; THENCE SOUTH 10 DEGREES, 32 MINUTES, 49 SECONDS EAST A DISTANCE OF 254.40 FEET TO ITS INTERSECTION WITH THE NORTH LINE OF THE SOUTHEAST 1/4 OF THE NORTHWEST 1/4 OF SAID SECTION 31 AND THERE TERMINATING.

THAT THE SURVEY SHOWN THEREON IS A CORRECT DELINEATION OF SAID SURVEY.

BLAINE, MINNESOTA
DATED THIS 11th DAY OF April A.D. 1972.

N. C. Hoium
SURVEYOR, MINNESOTA REGISTRATION NO. 4427

RECOMMENDED FOR APPROVAL THIS 20th DAY OF June A.D. 1972
C. J. Lundheim
ANOKA COUNTY HIGHWAY ENGINEER

THIS REGISTERED LAND SURVEY WAS APPROVED AS TO FORM AND EXECUTION ON THIS 8th DAY OF SEPTEMBER A.D. 1975.
Wendy Danta
COUNTY ATTORNEY, ANOKA COUNTY, MINNESOTA

CHECKED AND APPROVED THIS 20th DAY OF June A.D. 1972.
Roland W. Anderson
COUNTY SURVEYOR, ANOKA COUNTY, MINNESOTA

THIS REGISTERED LAND SURVEY WAS APPROVED BY THE TOWN BOARD OF THE TOWNSHIP OF LINWOOD AT A REGULAR MEETING THEREOF HELD THIS 13th DAY OF June A.D. 1972
Ed Renick CHAIRMAN
Logan Grant CLERK

THIS REGISTERED LAND SURVEY WAS APPROVED AND ACCEPTED BY THE BOARD OF COUNTY COMMISSIONERS OF THE COUNTY OF ANOKA, STATE OF MINNESOTA, AT A REGULAR MEETING THEREOF HELD THIS 20th DAY OF June A.D. 1972
Charles R. Lofgren CHAIRMAN
Charles R. Lofgren COUNTY AUDITOR
Lulu E. Sage, Deputy 87173

"NO DELINQUENT TAXES AND TRANSFER ENTERED"
Sept 8 1975
Charles R. Lofgren
Auditor, Anoka County
BY William J. Langum
Deputy

Office of REGISTRAR OF TITLES
STATE OF MINNESOTA
COUNTY OF ANOKA
I hereby certify that the within instrument was filed in this office on the 10 day of SEP 1975 at 9 o'clock A.M.
Neel J. Kondabl Registrar of Titles
By Jean Nevels DEPUTY REGISTRAR OF TITLES

N.C. HOIUM & ASSOCIATES, INC. — Engineers — Surveyors