

REGISTERED LAND SURVEY No 56

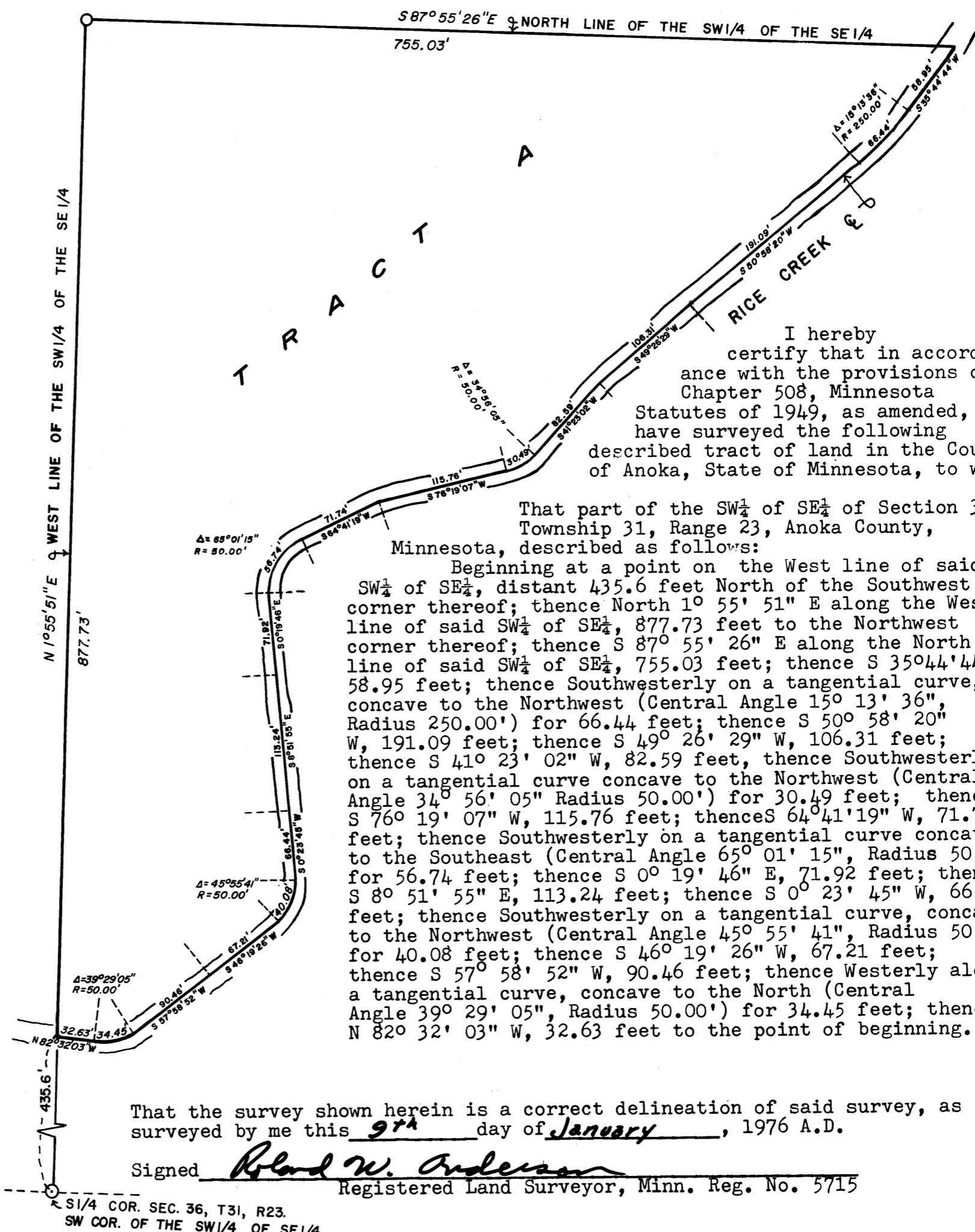
ANOKA COUNTY, MINNESOTA



SCALE 1" = 100'

BEARINGS SHOWN ARE ASSUMED

O DENOTES IRON MONUMENT



I hereby certify that in accordance with the provisions of Chapter 508, Minnesota Statutes of 1949, as amended, I have surveyed the following described tract of land in the County of Anoka, State of Minnesota, to wit:

That part of the SW 1/4 of SE 1/4 of Section 36, Township 31, Range 23, Anoka County, Minnesota, described as follows:

Beginning at a point on the West line of said SW 1/4 of SE 1/4, distant 435.6 feet North of the Southwest corner thereof; thence North 10° 55' 51" E along the West line of said SW 1/4 of SE 1/4, 877.73 feet to the Northwest corner thereof; thence S 87° 55' 26" E along the North line of said SW 1/4 of SE 1/4, 755.03 feet; thence S 35° 44' 44" W, 58.95 feet; thence Southwesterly on a tangential curve, concave to the Northwest (Central Angle 15° 13' 36", Radius 250.00') for 66.44 feet; thence S 50° 58' 20" W, 191.09 feet; thence S 49° 26' 29" W, 106.31 feet; thence S 41° 23' 02" W, 82.59 feet; thence Southwesterly on a tangential curve concave to the Northwest (Central Angle 34° 56' 05", Radius 50.00') for 30.49 feet; thence S 76° 19' 07" W, 115.76 feet; thence S 64° 41' 19" W, 71.74 feet; thence Southwesterly on a tangential curve concave to the Southeast (Central Angle 65° 01' 15", Radius 50.00') for 56.74 feet; thence S 0° 19' 46" E, 71.92 feet; thence S 8° 51' 55" E, 113.24 feet; thence S 0° 23' 45" W, 66.44 feet; thence Southwesterly on a tangential curve, concave to the Northwest (Central Angle 45° 55' 41", Radius 50.00') for 40.08 feet; thence S 46° 19' 26" W, 67.21 feet; thence S 57° 58' 52" W, 90.46 feet; thence Westerly along a tangential curve, concave to the North (Central Angle 39° 29' 05", Radius 50.00') for 34.45 feet; thence N 82° 32' 03" W, 32.63 feet to the point of beginning.

That the survey shown herein is a correct delineation of said survey, as surveyed by me this 9th day of January, 1976 A.D.

Signed Roland W. Anderson Registered Land Surveyor, Minn. Reg. No. 5715

SW 1/4 COR. SEC. 36, T31, R23. SW COR. OF THE SW 1/4 OF SE 1/4

This Registered Land Survey was approved and accepted by the City Council of the City of Circle Pines, Minnesota, at a regular meeting thereof held this 20th day of January, 1976 A.D.

City Council of the City of Circle Pines, Minnesota.

By V. J. Mackay Mayor
By W. J. Danneberg Clerk

Checked and approved this 23rd day of January, 1976

Roland W. Anderson
Anoka County Surveyor

Office of REGISTRAR OF TITLES
STATE OF MINNESOTA
COUNTY OF ANOKA

I hereby certify that the within instrument was filed in this office on the 23 day of FEB 23 1976 A.D. 1976 at 3 o'clock P.M. By Neil J. Omdahl Registrar of Titles
By Gillian Boettcher DEPUTY REGISTRAR OF TITLES

TAXES DELINQUENT AND TRANSFER ENTERED

Feb. 19 1976
Charles A. Sphar
Auditor, Anoka County

By Ray C. Cusack Deputy

1976 2 7 3 3 732 3 76

18.00