

REGISTERED LAND SURVEY NO. 66

ANOKA COUNTY, MINNESOTA

I, LeRoy H. Winner, surveyor, hereby certify that in accordance with the provisions of Chapter 508, Minnesota Statutes of 1949, as amended, I have surveyed the following described tracts of land in the County of Anoka, State of Minnesota to wit:

That part of the Southeast Quarter of the Northeast Quarter of Section 25, Township 31, Range 23, described as follows:

Beginning at the most westerly corner of Lot 21, Block 1, Circle Pines, Part 2, East Addition, which point is on the Southeasterly right-of-way line of County State Aid Highway No. 23 (formerly State Highway No. 8); thence South 58 degrees, 10 minutes, 08 seconds West along said Southeasterly right-of-way line a distance of 795.90 feet; thence South 31 degrees, 49 minutes, 52 seconds East, a distance of 288.20 feet; thence Southeasterly along a tangential curve, concave to the Northeast, delta angle of 67 degrees, 37 minutes, 44 seconds, radius of 227.81 feet, a distance of 268.89 feet; thence Southeasterly along a tangential curve, concave to the Northwest, delta angle of 29 degrees, 05 minutes, 35 seconds, radius of 469.05 feet, a distance of 238.17 feet; thence Northeasterly along a tangential curve, concave to the Northwest, delta angle of 44 degrees, 11 minutes, 15 seconds, radius of 194.06 feet, a distance of 149.66 feet; thence Northeasterly along a tangential curve, concave to the Southeast, delta angle of 57 degrees, 22 minutes, 03 seconds, radius of 146.35 feet, a distance of 146.53 feet; thence North 64 degrees, 37 minutes, 37 seconds East, tangent to said last described curve, a distance of 183.50 feet; thence Northeasterly along a tangential curve, concave to the Southeast, delta angle of 12 degrees, 24 minutes, 18 seconds, radius of 354.70 feet, a distance of 76.80 feet; thence North 77 degrees, 01 minutes, 55 seconds East, tangent to said last described curve, a distance of 7.56 feet to the point of intersection with an angle point on the Westerly right-of-way line of South Drive as shown on the plat of said Circle Pines, Part 2, East Addition; thence North 14 degrees, 13 minutes, 35 seconds West, a distance of 40.26 feet to the most Southerly corner of Lot 23, said Block 1; thence Northwesterly along the Westerly lines of Lots 23, 22, and 21, said Block 1, to the point of beginning.

That the survey shown herein is a correct delineation of said survey.

This 28th day of June, 1978.

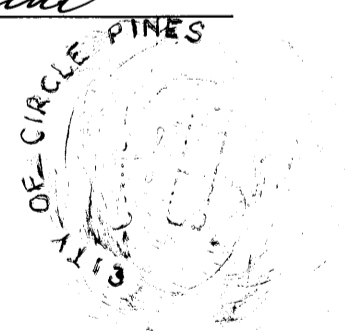
LeRoy H. Winner

LeRoy H. Winner, Reg. Surveyor No. 4987

Approved and accepted by the City Council of Circle Pines, Minnesota this 13th day of July, 1978.

Patricia J. Oman, Mayor

Harpe A. Dammeheim, Clerk



Checked and approved this 26th day of July, 1978.

Roland W. Anderson, County Surveyor, Anoka County, Minnesota.

"NO DELINQUENT TAXES AND TRANSFER ENTERED"

July 26, 1978, Charles R. Johnson, Auditor, Anoka County

Deputy 77062 SEP 29 1978

Office of REGISTRAR OF TITLES STATE OF MINNESOTA COUNTY OF ANOKA

I hereby certify that the within instrument was filed in this office on the 26th day of July, 1978, at 4:30 o'clock P.M. by [Signature] Registrar of Titles

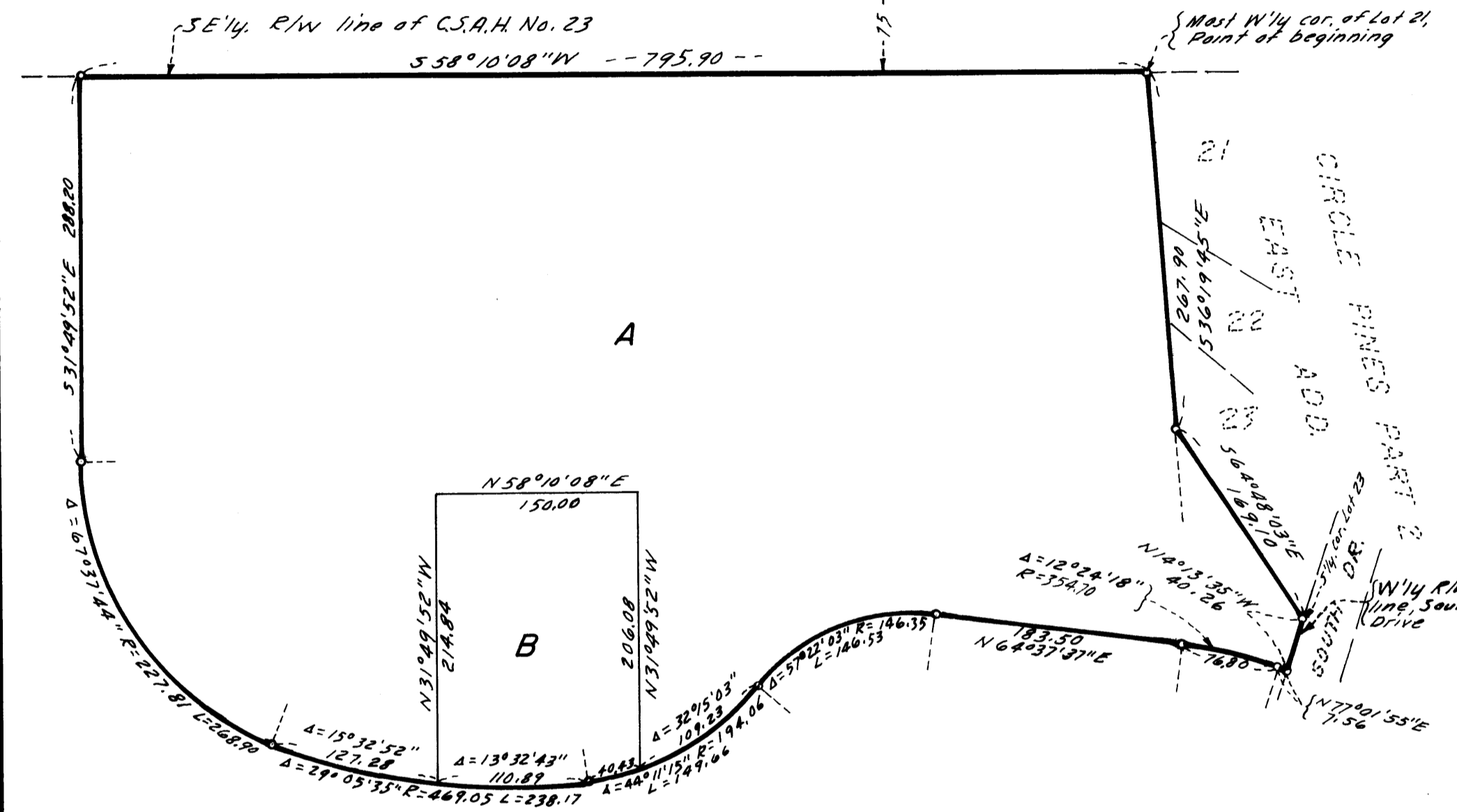
DEPUTY REGISTRAR OF TITLES

REGISTERED LAND SURVEY NO. 66

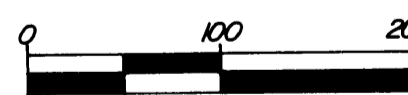
ANOKA COUNTY, MINNESOTA

CIRCLE PINES PART 1 EAST

C.S.A.H. NO. 23 (Formerly S.T.H. No. 8)



SCALE: 1 inch = 100 feet



o DENOTES IRON MONUMENTS BEARINGS ARE ASSUMED

"NO DELINQUENT TAXES AND TRANSFER ENTERED"

July 26, 1978, Charles R. Johnson, Auditor, Anoka County

Deputy 77062 SEP 29 1978