

REGISTERED LAND SURVEY NO. 68

ANOKA COUNTY, MINNESOTA

I hereby certify that in accordance with the provisions of Chapter 508, Minnesota Statutes of 1949, as amended, I have surveyed the following described tract in the County of Anoka and State of Minnesota, to wit:

The Southwest Quarter of the Northeast Quarter of Section 2, Township 33, Range 22, Anoka County, Minnesota.

and,

The Northwest Quarter of the Southeast Quarter, EXCEPTING the Southwest Quarter of the Northwest Quarter of the Southeast Quarter, of Section 2, Township 33, Range 22, Anoka County, Minnesota.

I hereby certify that the survey shown herein is a correct delineation of said survey. Dated this 10th day of October, 1978.

Thomas J. O'Malley Surveyor Minn. Reg. No. 112671

Approved by the Town Board of the Town of Linwood, Minnesota, this 10 day of Oct 1978.

Signed [Signature] Chairman

Attest [Signature] Clerk

Approved by the Board of County Commissioners of Anoka County, Minnesota, this 10th day of October, 1978.

Signed [Signature] Chairman, County Board

Signed [Signature] Executive Secretary

Approved this 11th day of October, 1978.

[Signature] Anoka County Highway Engineer

Checked and approved this 12th day of October, 1978.

[Signature] Anoka County Surveyor

This plat was approved as to form and execution on this 24 day of October, 1978.

Assistant County Attorney Anoka County, Minnesota

102272

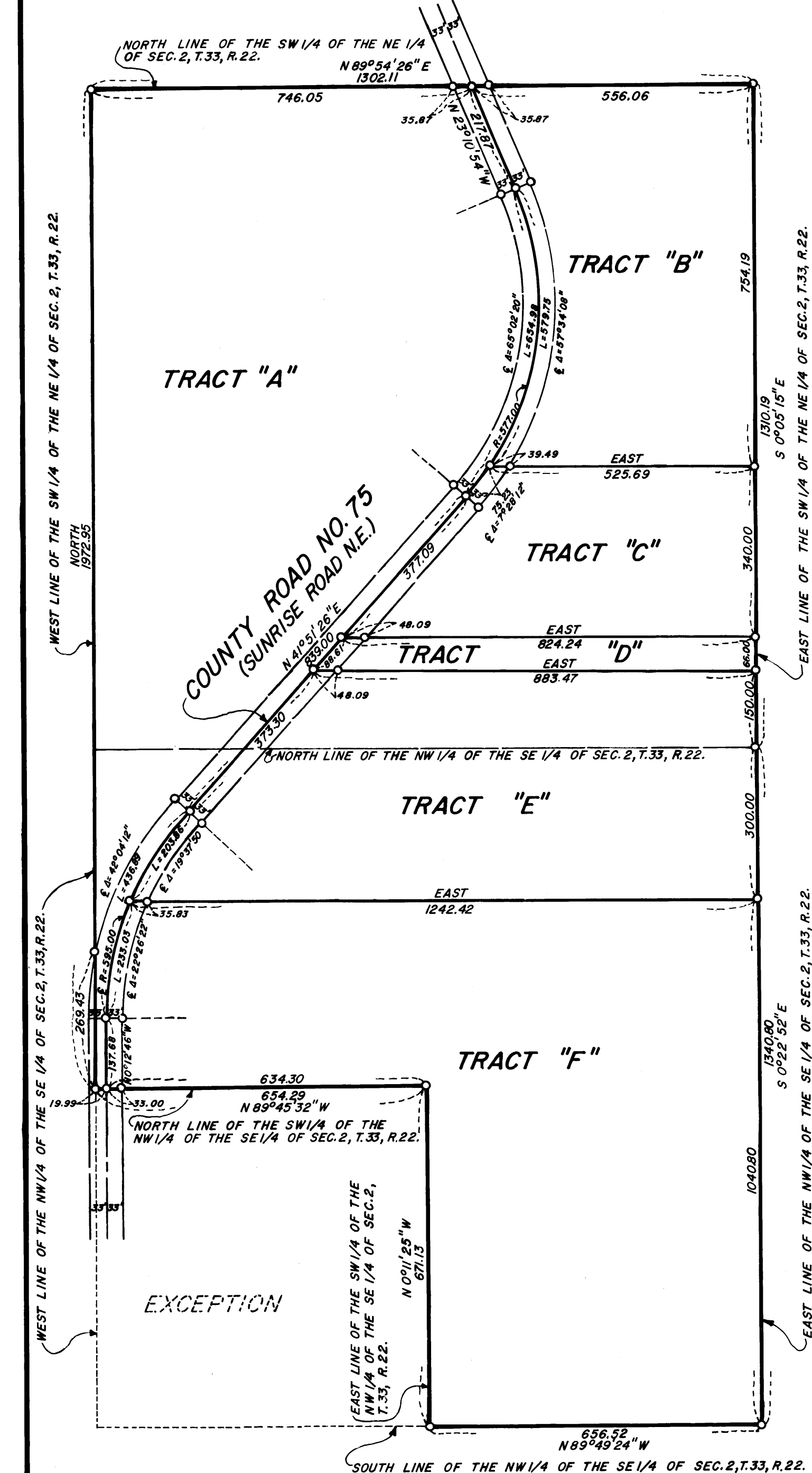
Office of REGISTRAR OF TITLES STATE OF MINNESOTA COUNTY OF ANOKA I hereby certify that the within Instrument was filed in this office on the 30 day of OCT 30 1978 A.D. 1978 at 11 o'clock A.M. By [Signature] REGISTRAR OF TITLES

"NO DELINQUENT TAXES AND TRANSFER ENTERED" Oct 30 1978 [Signature] Auditor, Anoka County By [Signature] Deputy

ACRD 7 5 9 3 OCT 30 78 1 5 50 8

REGISTERED LAND SURVEY NO. 68

ANOKA COUNTY, MINNESOTA



CAINE & O'MALLEY LAND SURVEYORS, INC.



SCALE: 1 INCH = 200 FEET DENOTES 1/2 INCH IRON PIPE. BEARINGS SHOWN ARE ASSUMED.