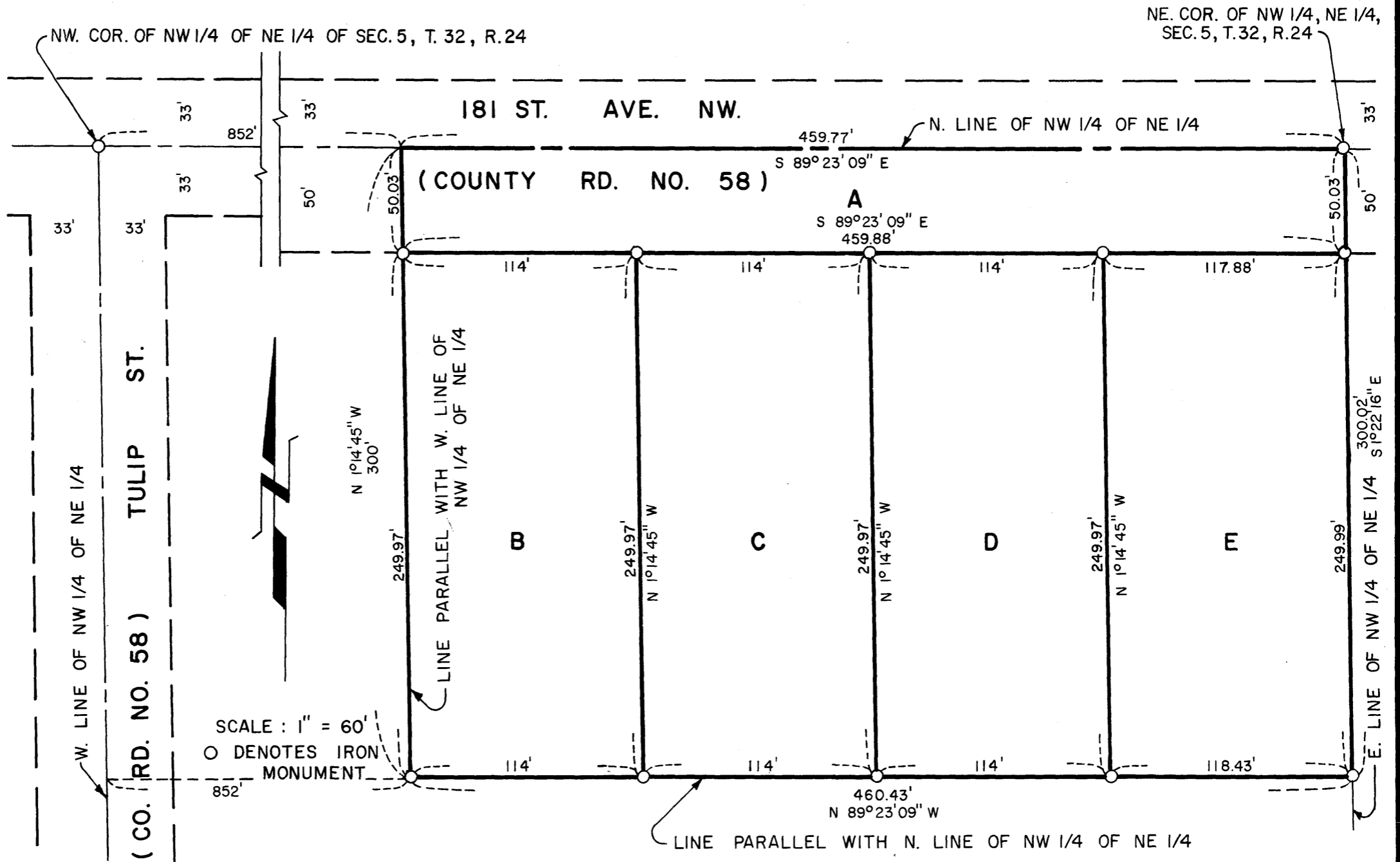


REGISTERED LAND SURVEY NO. 7

ANOKA COUNTY, MINNESOTA

LEROY H. WINNER SURVEYOR



I HEREBY CERTIFY THAT IN ACCORDANCE WITH THE PROVISIONS OF CHAPTER 508, MINNESOTA STATUTES OF 1949 AS AMENDED, I HAVE SURVEYED THE FOLLOWING DESCRIBED PROPERTY SITUATED IN THE COUNTY OF ANOKA, STATE OF MINNESOTA, TO-WIT:

THAT PART OF THE NW 1/4 OF THE NE 1/4 OF SECTION 5, TOWNSHIP 32, RANGE 24 DESCRIBED AS FOLLOWS:

BEGINNING AT A POINT ON THE NORTH LINE OF SAID NW 1/4 OF THE NE 1/4, SAID POINT BEING 852 FEET EAST OF THE NORTHWEST CORNER OF SAID NW 1/4 OF THE NE 1/4; THENCE EAST ALONG SAID NORTH LINE TO THE NORTHEAST CORNER OF SAID NW 1/4 OF THE NE 1/4; THENCE SOUTH ALONG THE EAST LINE OF SAID NW 1/4 OF THE NE 1/4 A DISTANCE OF 300 FEET; THENCE WEST AND PARALLEL WITH THE NORTH LINE OF SAID NW 1/4 OF THE NE 1/4 TO A POINT 852 FEET EAST OF THE WEST LINE OF SAID NW 1/4 OF THE NE 1/4, SAID DISTANCE BEING MEASURED PARALLEL TO THE NORTH LINE OF SAID NW 1/4 OF THE NE 1/4; THENCE NORTH AND PARALLEL TO THE WEST LINE OF SAID NW 1/4 OF THE NE 1/4 A DISTANCE OF 300 FEET TO THE POINT OF BEGINNING.

THAT THE SURVEY SHOWN HEREON IS A CORRECT DELINEATION OF SAID SURVEY.

DATED THIS 20th DAY OF September 1968.

Le Roy Winner
LAND SURVEYOR MINN. REG. NO. 4587

TAXES PAID

This 28th day of October 1968

Kenneth W. Campbell
Auditor, Anoka County, Minn.
Mary Beauchemin Deputy

I HEREBY CERTIFY THAT THE TAXES PAYABLE IN THE YEAR 1968 ON THE LANDS DESCRIBED WITHIN ARE PAID
Robert C. Peterson
Anoka County Treasurer

REGISTERED LAND SURVEY NO. 7

ANOKA COUNTY, MINNESOTA

LEROY H. WINNER SURVEYOR

THE REGISTERED LAND SURVEY SHOWN ON SHEET 1 WAS APPROVED AND ACCEPTED BY THE TOWN BOARD OF THE TOWNSHIP OF GROW AT A REGULAR MEETING HELD THIS 9 DAY OF October 1968 A. D.

Loris Appleby CHAIRMAN
Joyce Boud CLERK

THIS REGISTERED LAND SURVEY WAS APPROVED AND ACCEPTED BY THE BOARD OF COUNTY COMMISSIONERS OF THE COUNTY OF ANOKA, STATE OF MINNESOTA, AT A REGULAR MEETING HELD THIS 22nd DAY OF October 1968 A.D.

Robert C. Burman CHAIRMAN
Kenneth W. Campbell AUDITOR

RECOMMENDED FOR APPROVAL THIS 22nd DAY OF October 1968 A.D.

E. Y. Lundheim
COUNTY HIGHWAY ENGINEER, ANOKA COUNTY, MINNESOTA

THIS REGISTERED LAND SURVEY WAS APPROVED AS TO FORM AND EXECUTION ON THIS 24th DAY OF October 1968 A.D.

Robert W. Johnson
COUNTY ATTORNEY, ANOKA COUNTY, MINNESOTA

THIS REGISTERED LAND SURVEY WAS CHECKED AND APPROVED ON THIS 22nd DAY OF October 1968 A.D.

Roland W. Anderson
COUNTY SURVEYOR, ANOKA COUNTY, MINNESOTA

TAXES PAID

This 28th day of October 1968
Kenneth W. Campbell
Auditor, Anoka County, Minn.
By Nancy Beucher Deputy

I HEREBY CERTIFY THAT THE TAXES PAYABLE IN THE YEAR 1968 ON THE LANDS DESCRIBED WITHIN ARE PAID
Robert A. Peterson
Anoka County Treasurer

62597

Office of REGISTRAR OF TITLES
STATE OF MINNESOTA
COUNTY OF ANOKA
I hereby certify that this instrument was filed in this office on the 28 day of OCT 28 A.D. 1968 at 5 o'clock P.M.
Fred J. Omdahl Registrar of Titles
By William Boettcher DEPUTY REGISTRAR OF TITLES