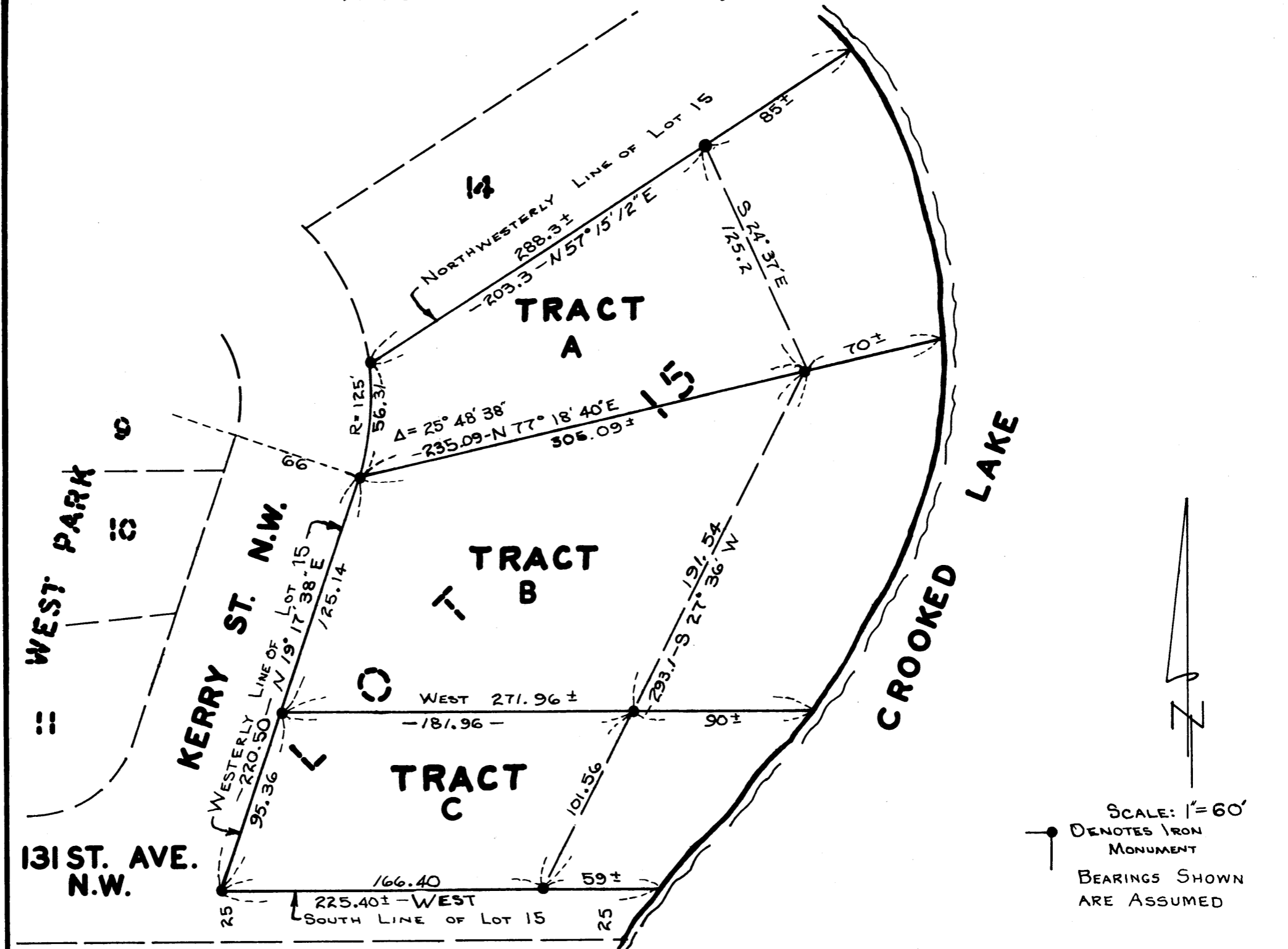


REGISTERED LAND SURVEY NO. 8

ANOKA COUNTY, MINNESOTA



I hereby certify that in accordance with the provisions of Chapter 508, Minnesota Statutes of 1949, as amended, I have surveyed the following described tract of land in the County of Anoka and State of Minnesota to-wit:

Lot Fifteen (15), Block One (1), Leier's Subdivision, Anoka County, Minnesota, EXCEPT the South Ninety feet (90'), as measured at right angles to the South line thereof, according to the plat thereof on file and of record in the office of the Register of Deeds in and for Anoka County, Minnesota.

Also, the South Ninety feet (90'), as measured at right angles to the South line thereof, of Lot Fifteen (15), Block One (1), Leier's Subdivision, Anoka County, Minnesota, according to the plat thereof on file and of record in the office of the Register of Deeds in and for Anoka County, Minnesota.

That the survey shown thereon is a correct delineation of said survey.

Coon Rapids, Minnesota
Dated this 11th day of JUNE A.D. 1968.

N. C. Hoium

Surveyor, Minnesota Registration No. 4427

We hereby certify that the City Council of the City of Coon Rapids, Anoka County, Minnesota, duly accepted and approved this Registered Land Survey at a regular meeting thereof held this 19 day of September A.D. 1967.

CITY OF COON RAPIDS, ANOKA COUNTY, MINNESOTA

by *Robert A. Voss* Mayor
by *Mary A. Neumann* Clerk

Office of REGISTRAR OF TITLES
STATE OF MINNESOTA
COUNTY OF ANOKA
I hereby certify that the within instrument was filed in this office on the _____ day of _____ A.D. 19__ at _____ o'clock _____ A.M.
By *Robert J. Omsdahl* Registrar of Titles
By *Colleen Boltcher* DEPUTY REGISTRAR OF TITLES

TAXES PAID

This 16th day of Dec. 1968
Bennett W. Campbell
Auditor, Anoka
By *Lester E. Lage* Deputy

I HEREBY CERTIFY THAT THE TAXES PAYABLE IN THE YEAR 1968 ON THE LANDS DESCRIBED WITHIN HAVE BEEN PAID
Robert A. Peterson
County Treasurer

Checked and approved this 16th day of December 1968 A.D.
Robert W. Anderson
Anoka County Assessor