

REGISTERED LAND SURVEY NO. 82

ANOKA COUNTY, MINNESOTA

I hereby certify that in accordance with the provisions of Chapter 508, Minnesota Statutes of 1949, as amended, I have surveyed the following described tract of land in the County of Anoka, State of Minnesota, to wit:

All that part of the Southeast Quarter of the Southwest Quarter, Section 12, Township 30, Range 24, Anoka County, Minnesota described as follows:

Commencing at the Southeast corner of said Quarter Quarter; thence North 88 degrees 35 minutes 36 seconds West assumed bearing along the south line of said Quarter Quarter a distance of 159.31 feet to the actual point of beginning; thence North 51 degrees 55 minutes 41 seconds West a distance of 472.93 feet; thence South 36 degrees 25 minutes 23 seconds West a distance of 42.89 feet; thence North 63 degrees 11 minutes 07 seconds West a distance of 214.66 feet; thence North 28 degrees 15 minutes 30 seconds West a distance of 112.06 feet; thence North 88 degrees 35 minutes 36 seconds West a distance of 553.79 feet to the West line of said Quarter Quarter; thence South 00 degrees 19 minutes 25 seconds West along the West line of said Quarter Quarter a distance of 436.83 feet to the Southwest corner of said Quarter Quarter; thence South 88 degrees 35 minutes 36 seconds East along the South line of said Quarter Quarter a distance of 1198.85 feet to the point of beginning.

Subject to Easement of record for State Trunk Highway Number 65.

That the survey shown herein is a correct delineation of said survey, as surveyed by me this 6th day of August, 1980.

Signed Roland W. Anderson
Registered Land Surveyor, Minn. Reg. No. 5715

This Registered Land Survey was approved and accepted by the City Council of the City of Fridley, Minnesota, at a regular meeting thereof held this 5th day of January, 1980.

City Council of the City of Fridley, Minnesota

By William J. Nee, Mayor

By Sandra C. Simonson, Clerk

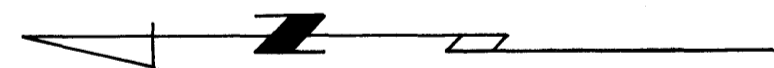
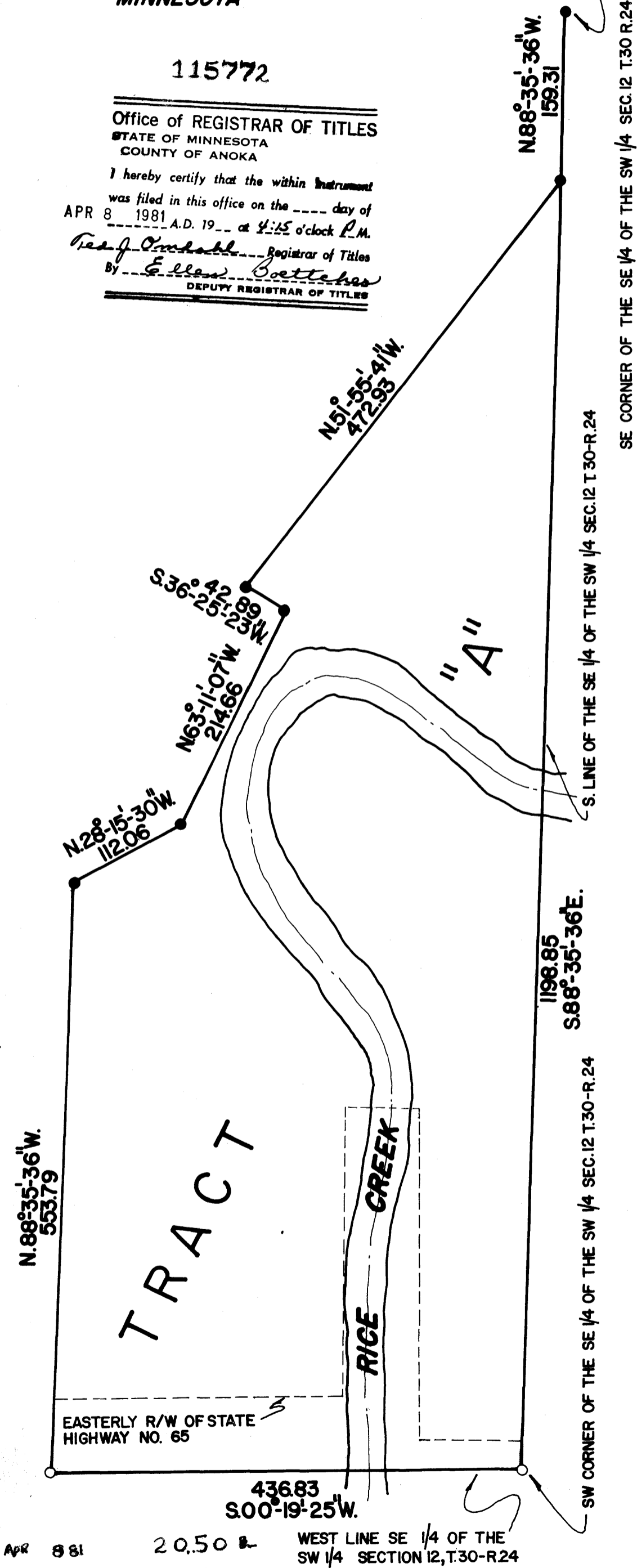
Checked and approved this 8th day of January, 1980.

Roland W. Anderson
Anoka County Surveyor

115772

Office of REGISTRAR OF TITLES
STATE OF MINNESOTA
COUNTY OF ANOKA

I hereby certify that the within instrument was filed in this office on the ___ day of APR 8 1981 A.D. 19__ at 4:25 o'clock P.M.
By Edmund Battelmas Registrar of Titles
DEPUTY REGISTRAR OF TITLES



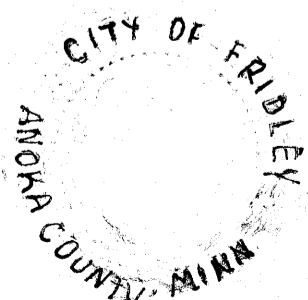
SCALE: ONE INCH=100 FEET
BEARINGS SHOWN ARE ASSUMED
○ DENOTES IRON PIPE
● DENOTES ANOKA COUNTY MONUMENT

"NO DELINQUENT TAX AND TRANSFER ENTERIES"

Feb 10th 1980

Charles R. Lybrow
Auditor, Anoka County

BY F. R. Kamala



OFFICE OF
ANOKA COUNTY SURVEYOR

APR 9 2 6 7 4 APR 8 81

436.83
S.00-19-25W.

20.50 ± WEST LINE SE 1/4 OF THE SW 1/4 SECTION 12, T.30-R.24