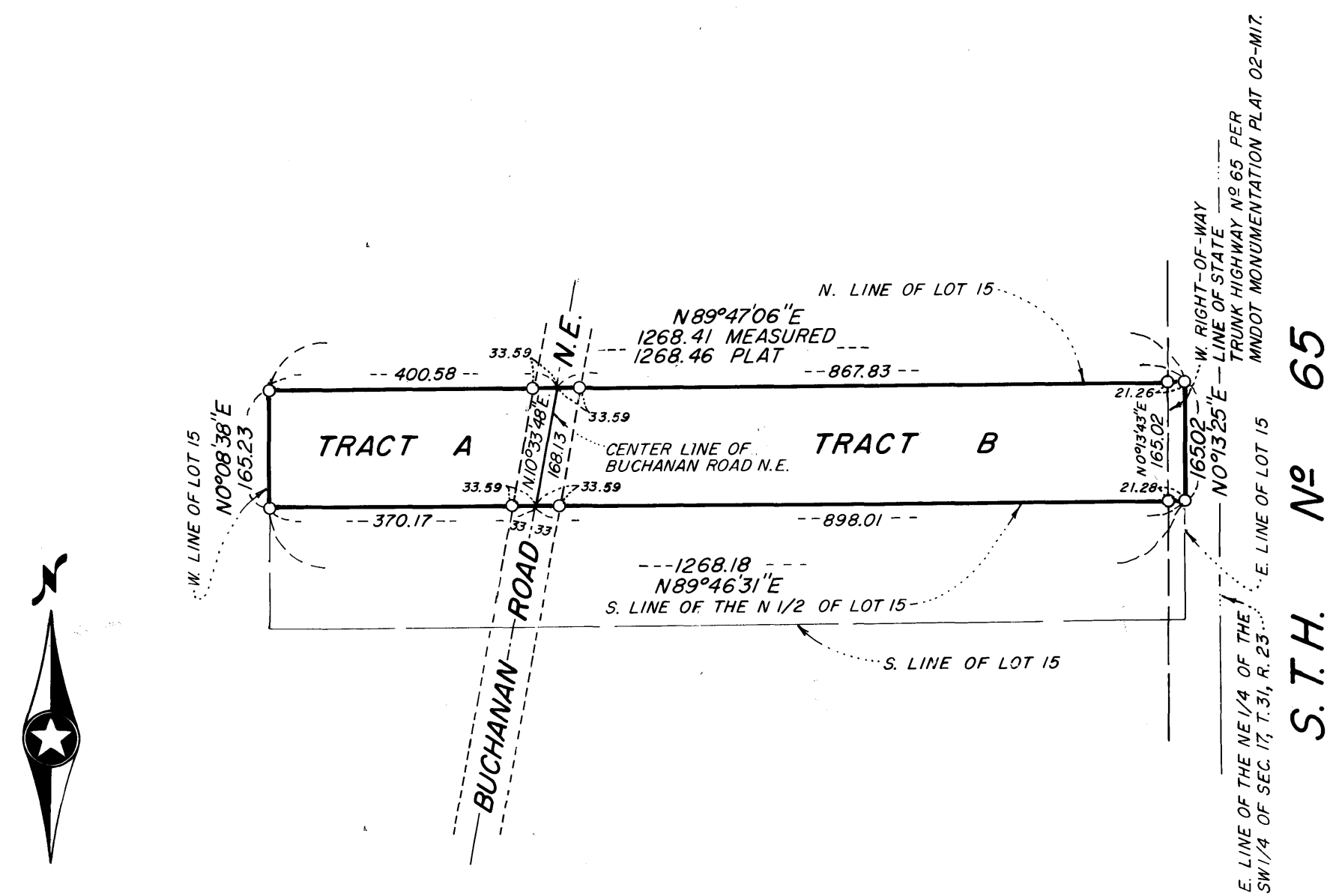


REGISTERED LAND SURVEY NO. 89
 ANOKA COUNTY, MINNESOTA



SCALE: 1 INCH = 200 FEET.
 O DENOTES 1/2 INCH IRON PIPE SET.
 NOTE: The N. line of Lot 15, CENTRAL AVENUE ACRES,
 is assumed to bear N. 89° 47' 06" E.

I hereby certify that in accordance with the provisions of Chapter 508, Minnesota Statutes of 1949, as amended, I have surveyed the following described tract in the County of Anoka and State of Minnesota, to-wit:

The North One-half of Lot Fifteen (N $\frac{1}{2}$ of 15) of Central Avenue Acres.

I hereby certify that the survey shown herein is a correct delineation of said survey. Dated this 29th day of November, 1985.

Jeffrey M. Caine
 Land Surveyor, Minn. Reg. No. 12251

We hereby certify that the City Council of the City of Blaine, Anoka County, Minnesota duly accepted and approved this Registered Land Survey at a regular meeting thereof held this 5 day of DEC, 1985.

CITY OF BLAINE, ANOKA COUNTY, MINNESOTA

By Ross Clark Mayor By Joyce Turistal Clerk

Checked and approved this 7th day of February, 1986.

Poland W. Anderson
 Anoka County Surveyor

148585

RECORDS DEPARTMENT
 AND TRANSFER OFFICE

Feb 12 1986

John J. Johnson
 Anoka County

By J. P. Kaminicki
 Deput.

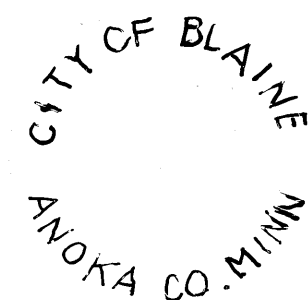
Office of REGISTRAR OF TITLES

STATE OF MINNESOTA

COUNTY OF ANOKA

1986 2:25 P.M.

Joe J. Omdahl
Katherine Bein
 REGISTRAR OF TITLES



CANE & ASSOCIATES
 LAND SURVEYORS, INC.