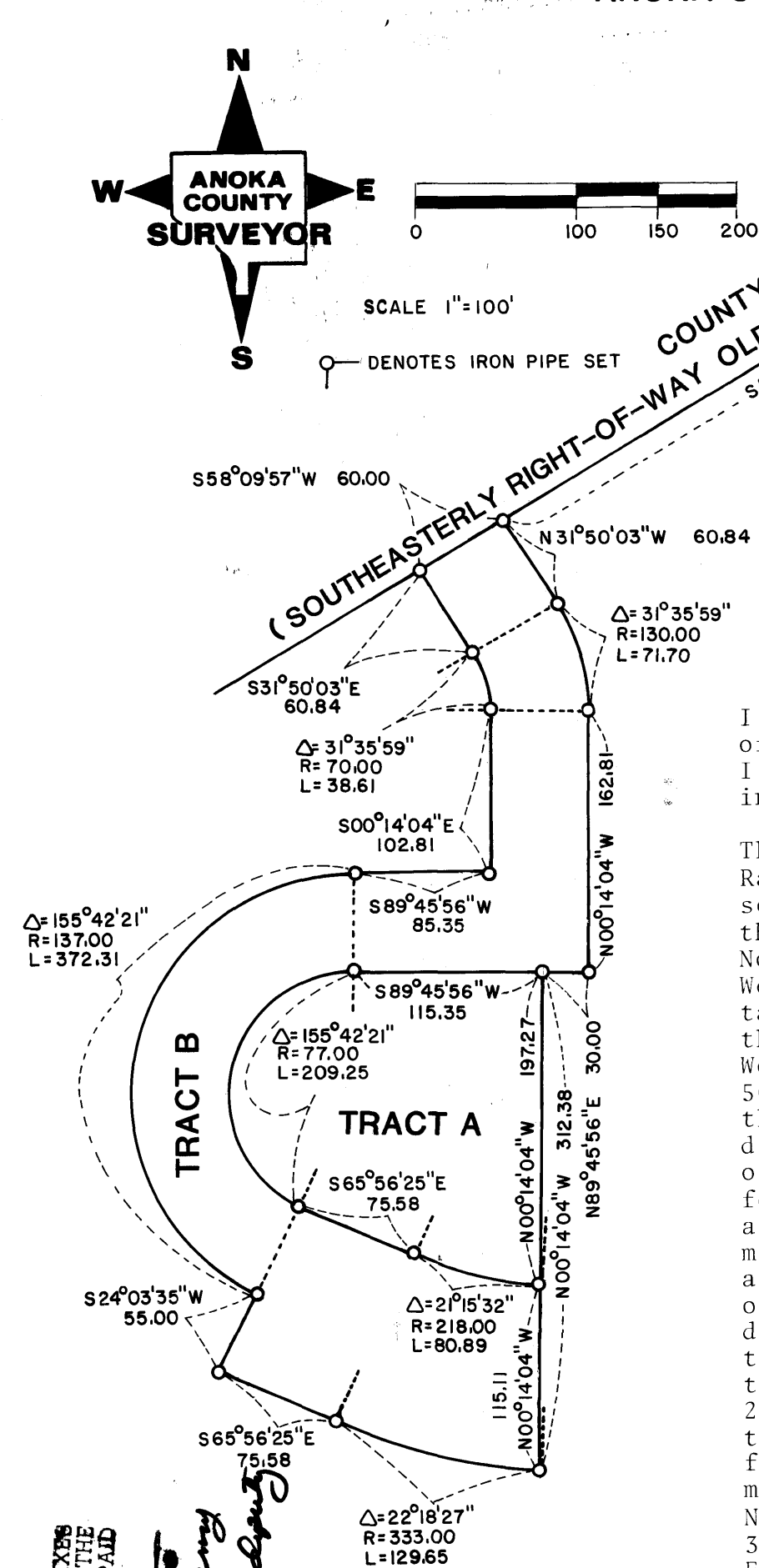
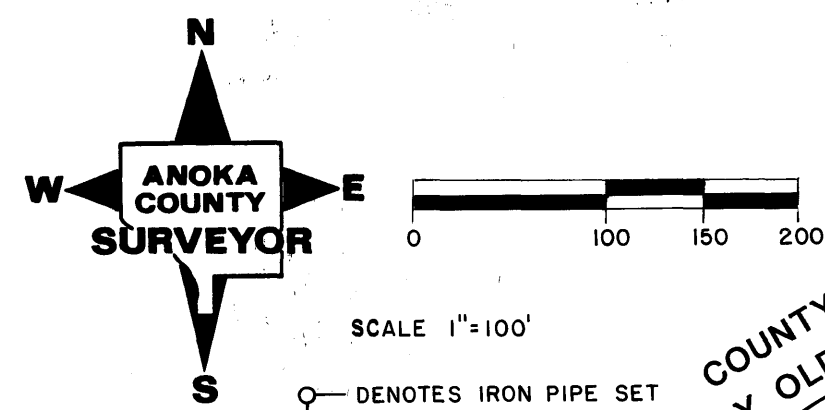


REGISTERED LAND SURVEY NUMBER 96

ANOKA COUNTY, MINNESOTA



THE SOUTHEASTERLY RIGHT-OF-WAY LINE OF C.S.A.H. NO.23 IS ASSUMED TO HAVE A BEARING OF S58°09'57" W.

EASTERLY LINE OF GOVERNMENT LOT 2, SECTION 25, T. 31, R.23

162799

Office of REGISTRAR OF TITLES
 STATE OF MINNESOTA
 COUNTY OF ANOKA

I hereby certify that the within instrument was filed in this office on the 19th day of April, 1985 A.D. at 11 o'clock A.M.

Leo J. Andell, Registrar of Titles
 By Katherine Beier, Deputy Registrar of Titles

I hereby certify that in accordance with the provisions of Chapter 508, Minnesota Statutes of 1949, as amended, I have surveyed the following described tract of land in the County of Anoka and States of Minnesota:

That part of Government Lot 2, Section 25, Township 31, Range 23 described as follows: Commencing at the intersection of the easterly line of said Government Lot 2 and the southeasterly Right-of-way line of old Trunk Highway No. 8; thence South 58 degrees 09 minutes 57 seconds West assumed bearing along said Right-of-way line a distance of 615.00 feet to the actual point of beginning; thence continuing South 58 degrees 09 minutes 57 seconds West a distance of 60.00 feet; thence South 31 degrees 50 minutes 03 seconds East a distance of 60.84 feet; thence along a tangential curve concave to the west a distance of 38.61 feet, said curve having a central angle of 31 degrees 35 minutes 59 seconds and a radius of 70.00 feet; thence South 00 degrees 14 minutes 04 seconds East a distance of 102.81 feet; thence South 89 degrees 45 minutes 56 seconds West a distance of 85.35 feet; thence along a tangential curve concave to the east a distance of 372.31 feet, said curve having a central angle of 155 degrees 42 minutes 21 seconds and a radius of 137.00 feet; thence South 24 degrees 03 minutes 35 seconds West a distance of 55.00 feet; thence South 65 degrees 56 minutes 25 seconds East a distance of 75.58 feet; thence along a tangential curve concave to the north a distance of 129.65 feet, said curve having a central angle of 22 degrees 18 minutes 27 seconds and a radius of 333.00 feet; thence North 00 degrees 14 minutes 04 seconds West a distance of 312.38 feet; thence North 89 degrees 45 minutes 56 seconds East a distance of 30.00 feet; thence North 00 degrees 14 minutes 04 seconds West a distance of 162.81 feet; thence along a tangential curve concave to the West a distance of 71.70 feet, said curve having a central angle of 31 degrees 35 minutes 59 seconds and a radius of 130.00 feet; thence North 31 degrees 50 minutes 03 seconds West a distance of 60.84 feet to the point of beginning.

HEREBY CERTIFY THAT THE TAXES PAYABLE IN THE YEAR 1985 ON THE LANDS DESCRIBED WITHIN ARE PAID

Donald E. Beier
 Anoka County Register

J. Kemp
 Auditor, Anoka County

"NO DELINQUENT TAXES AND TRANSFER ENTERED"

May 7 1985
Charles R. LeFebvre
 Auditor, Anoka County

BY S. Chelms
 Deputy

This Registered Land Survey has been approved and accepted by the City Council of Circle Pines at a regular meeting thereof held this 23rd day of April, 1985

CITY COUNCIL OF CIRCLE PINES, MINNESOTA

By Marshall N. Dahl Mayor
 By C. R. Kapp Clerk

This is a correct delineation of the survey dated this 4th DAY OF April, 1985

Roland W. Andeman
Minnesota Registered Land Surveyor No. 5715

Checked and approved this 29th day of April, 1985

Roland W. Andeman
Anoka County Surveyor

440.00 d
0024047 5-07-870034