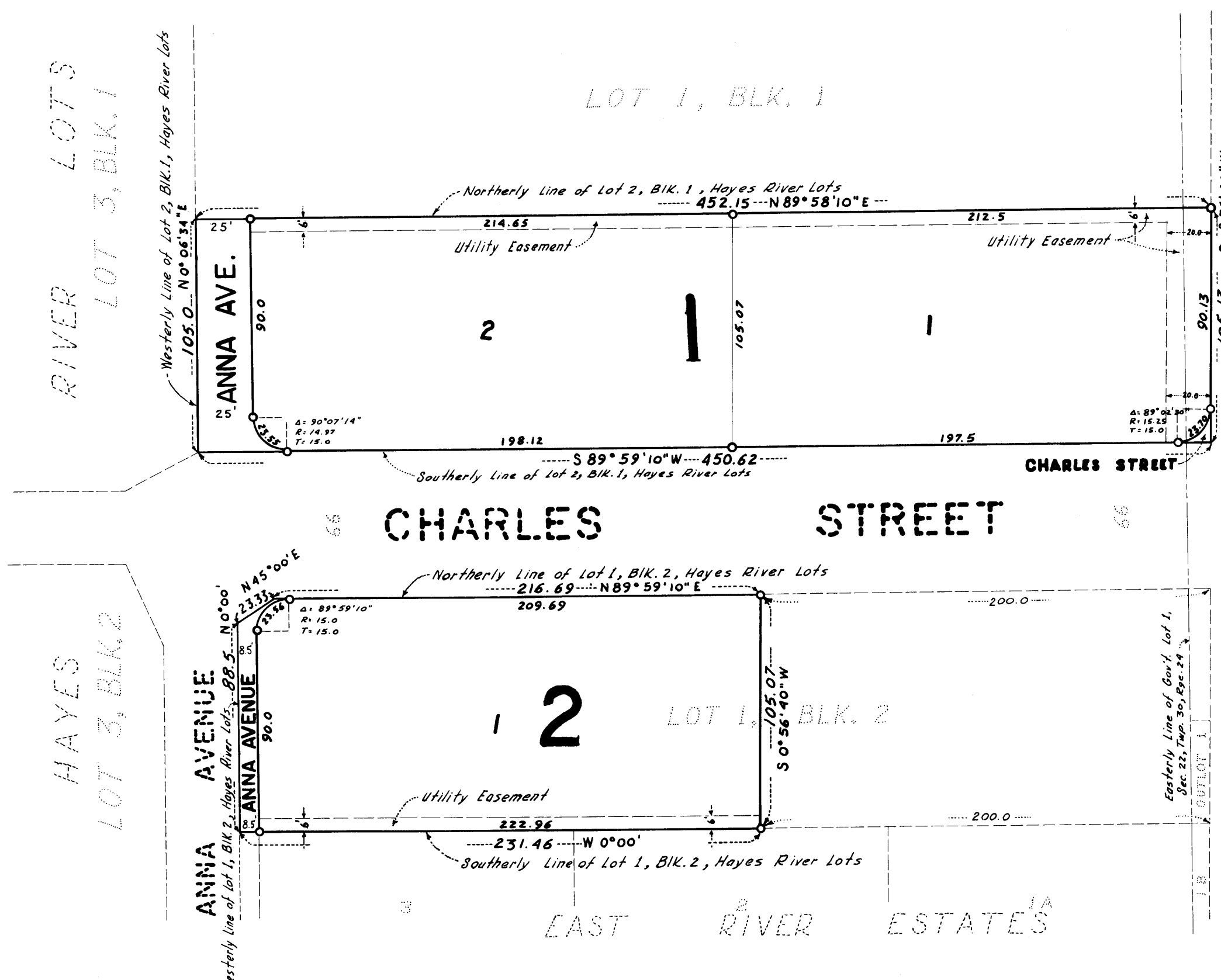


ROBYN'S RIVER MANOR

ANOKA COUNTY, MINNESOTA
CITY OF FRIDLEY

LAND SURVEYORS
Harry S. Johnson Associates INC.



EAST RIVER ROAD

Scale: 1" = 50'
Denotes Iron Monuments
Bearings are Assumed

KNOW ALL MEN BY THESE PRESENTS: That Paro Development Company, a Minnesota Corporation, owners and proprietors of the following described property situate in the County of Anoka, State of Minnesota to-wit: Lot 2, Block 1, together with all that part of Lot 1, Block 2, lying westerly of a line drawn parallel with and 200 feet West (as measured along the Northerly line of said Lot 1) of the most Easterly line of said Lot 1. All lying in HAYES RIVER LOTS. Have caused the same to be surveyed and platted as ROBYN'S RIVER MANOR and do hereby donate and dedicate to the public for public use forever the street and avenue as shown on the annexed plat. And also the utility and drainage easements as shown on the annexed plat. In witness whereof Paro Development Company has caused these presents to be signed by its proper officers and its corporate seal to be hereunto affixed this 18 day of July A. D. 1961.

In Presence of: _____ Signed: Paro Development Company
 _____ President Harry N. Field
 _____ Secretary Paul J. Schwartz

State of Minnesota
 County of Hennepin On this 18 day of July A. D. 1961, before me, a notary public within and for said County and State, personally appeared Harry N. Field and Paul J. Schwartz to me personally known, who being by me each duly sworn did say that they are respectively president and secretary of Paro Development Company the corporation named in the foregoing instrument, that the seal affixed to said instrument is the corporate seal of said corporation, that said instrument was signed and sealed in behalf of said corporation by authority of its board of directors, and said Harry N. Field and Paul J. Schwartz acknowledge said instrument to be the free act and deed of said corporation.

E. N. Erickson
 Notary Public, Hennepin County, Minnesota
 My Commission Expires: 11/1/62

I hereby certify that I have surveyed and platted the property described on this plat as ROBYN'S RIVER MANOR; that this plat is a correct representation of said survey; that all distances are correctly shown on said plat in feet and decimals of a foot; that the monuments for the guidance of future surveys have been correctly placed in the ground as shown on said plat; that the outside boundary lines are designated on said plat; that the topography of the land is correctly shown on the plat and there are no wet lands or public highways to be designated on said plat other than as shown thereon.

Harry S. Johnson
 Registered Land Surveyor, Minnesota Reg. No. 5065

State of Minnesota
 County of Hennepin The above certificate was subscribed and sworn to before me, a Notary Public, within and for said County and State, on this 18 day of July A. D. 1961.

Raymond C. Schultz
 Notary Public, Hennepin County, Minnesota
 My Commission Expires: 13 August, 1966

The annexed plat of ROBYN'S RIVER MANOR was approved and accepted by the City Council of Fridley, Minnesota, at a regular meeting thereof held this 3 day of Oct. A. D. 1961.

City Council, Fridley, Minnesota
 By T. E. Meig its Mayor
 By Carl P. Wagner its Manager

The boundaries of this plat and the boundaries of the blocks therein have been mathematically checked and approved.
 Dated this 3rd day of October A. D. 1961.

By Robert W. Anderson, Anoka County Surveyor

I HEREBY CERTIFY THAT TAXES FOR THE YEAR 1960 ON THE LANDS DESCRIBED WITHIN ARE PAID
Walter D. Bernard
 County Treasurer
 By L. Cannon Deputy

TAXES PAID
 This 3rd day of Oct. 1961
Kenneth H. Campbell
 Auditor, Anoka County, Minn.
 By Chris J. Meigs Deputy

207216
 OFFICE OF REGISTER OF DEEDS
 STATE OF MINNESOTA, COUNTY OF ANOKA } ss
 I hereby certify that the within instrument was filed in this office for record on the 3 day of Oct. 1961 A. D. 1961 at 3 o'clock P. M. and was duly recorded in book 22 of Plats page 5
Gertrude Schaefer
 Register of Deeds
 By Margaret Russell Deputy

