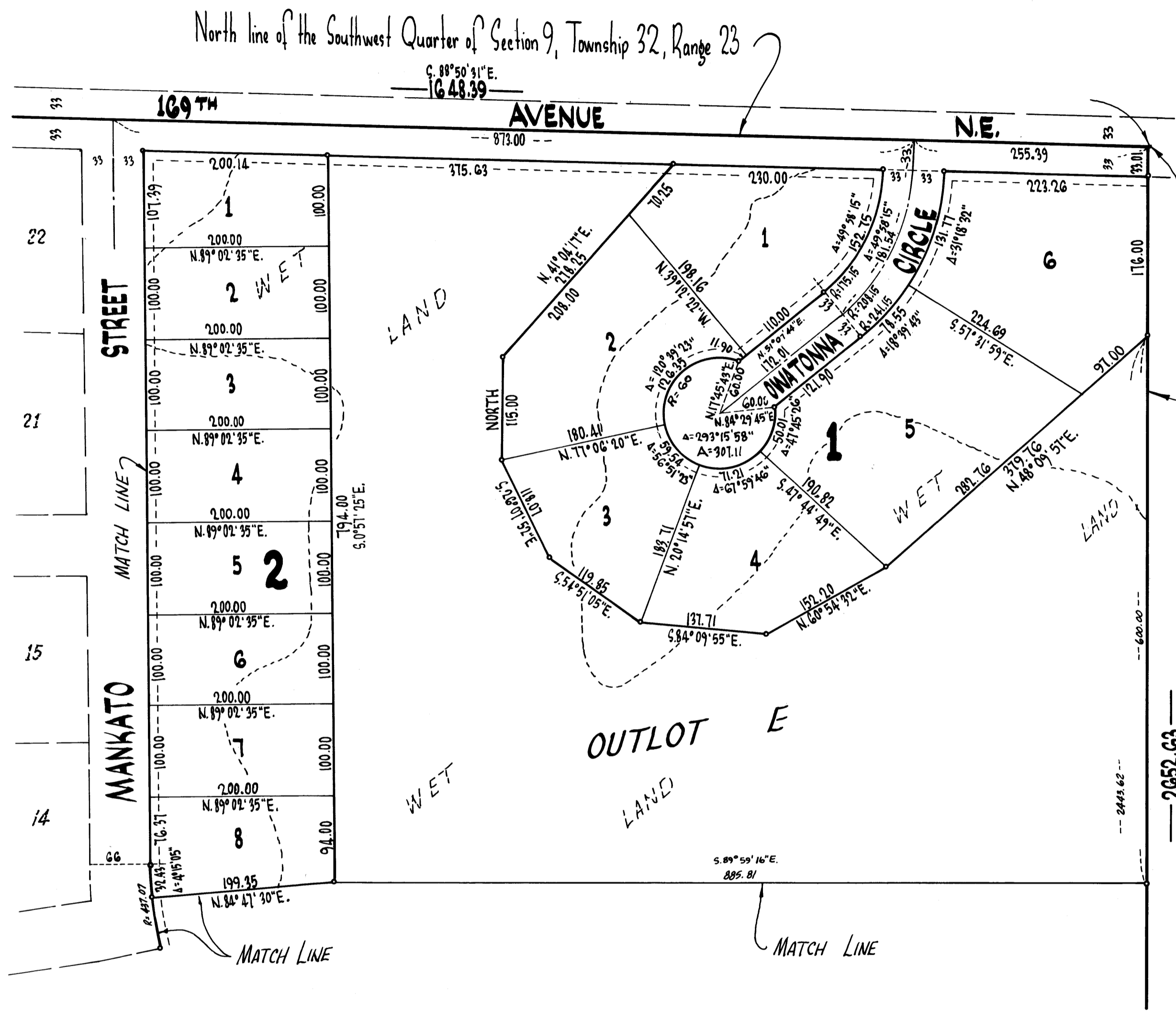


ROLLING MEADOWS



KNOW ALL MEN BY THESE PRESENTS: That Bronson-Erickson, Incorporated, a Minnesota corporation, owner and proprietor of the following described property situate in the County of Anoka, State of Minnesota to-wit: The Northeast Quarter of the Southeast Quarter of Section 8, Township 32, Range 23 except the West Half thereof and except that part described as follows: Commencing at the northeast corner of said Northeast Quarter of Southeast Quarter; thence West, along the north line of said Northeast Quarter of Southeast Quarter, a distance of 250 feet to the actual point of beginning; thence South, parallel with the east line of said Northeast Quarter of Southeast Quarter, a distance of 300 feet; thence West, parallel with said north line, a distance of 400 feet; thence North, parallel with said east line, a distance of 300 feet to the north line of said Northeast Quarter of Southeast Quarter; thence East, along said north line, to the actual point of beginning; the Southwest Quarter of Section 9, Township 32, Range 23 except the East 250 feet of the West 1000 feet, as measured along the north line thereof, of the North 700 feet, except the North 350 feet of the West 50 feet thereof; has caused the same to be surveyed and platted as ROLLING MEADOWS and does hereby donate and dedicate to the public for public use forever the Avenue, Circles, Streets and drainage and utility easements as shown on this plat. In witness whereof said Bronson-Erickson, Incorporated has caused these presents to be signed by its proper officers and its corporate seal to be hereunto affixed this 5th day of December A.D. 1972.

In Presence of:
 Frank Settera As to Oliver R. Erickson
 Thomas Settera and V. J. Olson
 BRONSON-ERICKSON, INCORPORATED
 Oliver R. Erickson President
 V. J. Olson Secretary

STATE OF MINNESOTA On this 5th day of December A.D. 1972, before me a Notary Public within and for said County of ANOKA County and State, personally appeared Oliver R. Erickson and V. J. Olson, to me personally known, who being by me duly sworn, did say that they are the President and Secretary respectively of the Bronson-Erickson, Incorporated the corporation named in the foregoing instrument; and that the seal affixed to said instrument is the corporate seal of said corporation, and that said instrument was signed and sealed in behalf of said corporation by authority of its Board of Directors, and said Oliver R. Erickson and V. J. Olson acknowledged said instrument to be the free act and deed of said corporation.

Marietta L. Zuehlke
 Notary Public, Anoka County, Minnesota
 My Commission Expires April 19, 1977

I hereby certify that I have surveyed and platted the property described on this plat as ROLLING MEADOWS; that this plat is a correct representation of said survey; that all distances are correctly shown on the plat in feet and decimals of a foot; that all monuments have been correctly placed in the ground as shown on said plat; that the outside boundary lines are correctly designated on said plat, and that there are no wet lands to be designated on said plat, other than shown thereon.

E. A. Rattlbum
 Surveyor - Minnesota Registration No. 3795

STATE OF MINNESOTA Surveyor's certificate subscribed and sworn to before me, a Notary Public, this 5th day of December A.D. 1972.

Marietta L. Zuehlke
 Notary Public, Anoka County, Minnesota
 My Commission Expires April 19, 1977

Accepted and approved by the Planning and Zoning Commission of the Township of Ham Lake.
 Ambassador Chairman
 Harold A. Braastad Secretary

We the Chairman and Clerk of the Township Board of the Township of Ham Lake, Anoka County, Minnesota do hereby certify that on this 5th day of December A.D. 1972 said Township Board duly approved the plat of ROLLING MEADOWS and authorized certification of such action of the Board by its Chairman and Clerk.

TOWN BOARD OF THE
 TOWNSHIP OF HAM LAKE, MINNESOTA
 Cordell B. Wellman Chairman
 Donald R. Kormaner Clerk

Checked and approved this 26th day of December A.D. 1972.
 Roland W. Anderson
 Anoka County Surveyor

This plat was approved and accepted by the Board of County Commissioners of the County of Anoka, State of Minnesota at a regular meeting thereof held this 26th day of December A.D. 1972.

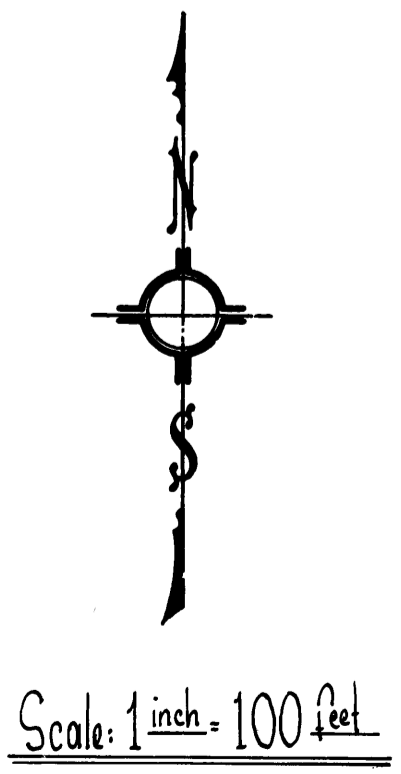
By Albert A. Rosdick Chairman
 By Charles P. Zuehlke County Auditor

Recommended for approval this 26th day of December A.D. 1972.
 By B. J. Lundblom
 County Highway Engineer,
 Anoka County, Minnesota

This plat was approved as to form and execution on this 8th day of January A.D. 1973.
 Robert W. Johnson
 County Attorney, Anoka County, Minnesota

"NO DELINQUENT TAXES AND TRANSFER ENTERED"
 Jan. 4 1973
 Charles P. Zuehlke
 Auditor, Anoka County
 By Nancy C. Auer
 Deputy

OFFICE OF REGISTER OF DEEDS
 STATE OF MINNESOTA, COUNTY OF ANOKA }
 I hereby certify that the within instrument was filed in this office for record on the day of JAN. 17 1973 A.D., 195... at 2:20 o'clock A.M., and was duly recorded in book 11 of Plats page 9.
 Fred J. Ondak
 Register of Deeds
 By Margaret Russell
 Deputy



Bearings shown are assumed
 Denotes iron monument marked by Minnesota Registration No. 3795

Dashed lines denotes Utility and Drainage Easement being 10 feet in width and parallel with the Lot line unless otherwise indicated

URBAN ENGINEERING, INC.
 - Engineers -
 - Surveyors -

MAY, 1972

ROLLING MEADOWS

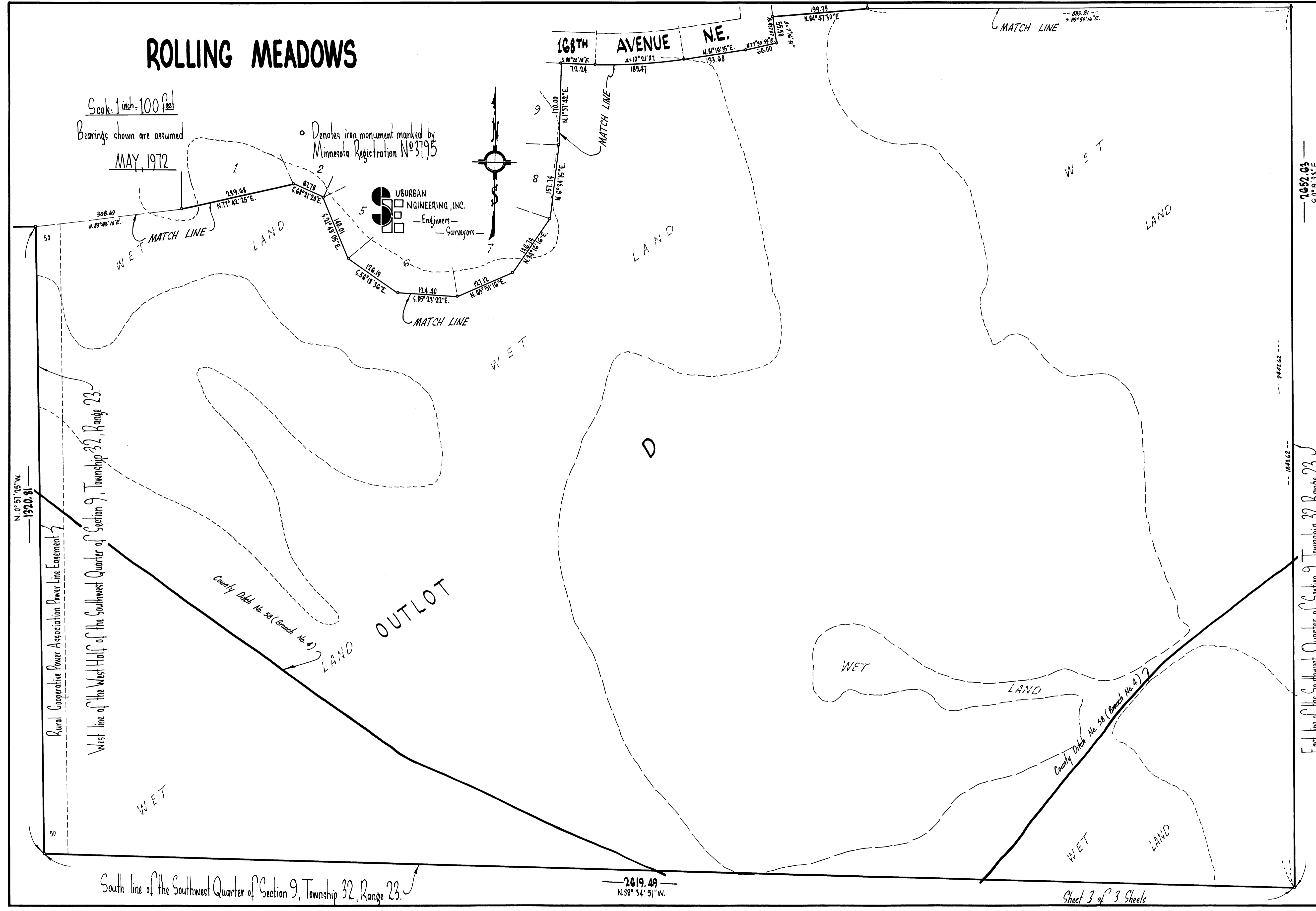
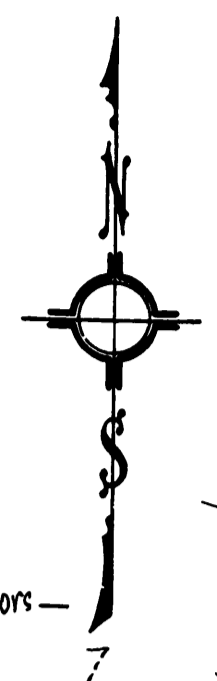
Scale: 1 inch = 100 feet

Bearings shown are assumed

MAY, 1972

Denotes iron monument marked by Minnesota Registration No. 3795

URBAN ENGINEERING, INC.
— Engineers —
— Surveyors —



N. 01° 51' 25" W.
1320.81

Rural Cooperative Power Association Power Line Easement

West line of the West Half of the Southwest Quarter of Section 9, Township 32, Range 23.

WET

County Ditch No. 58 (Branch No. 4)

LAND OUTLOT

South line of the Southwest Quarter of Section 9, Township 32, Range 23.

2619.49
N. 88° 34' 51" W.

Sheet 3 of 3 Sheets

1843.62

2652.63
S. 01° 19' 02" E.

East line of the Southwest Quarter of Section 9, Township 32, Range 23.