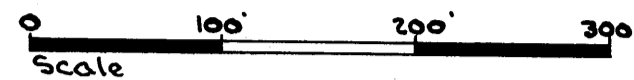


RONDEAU LAKE ADDITION

VILLAGE OF LINO LAKES ~ ANOKA COUNTY

MINNESOTA



o indicates iron monument

Know all men by these presents that El Rehbein and Son, Inc., a Minnesota corporation, owners of the following described property situated in the County of Anoka, State of Minnesota to wit: The west 333 feet of the south 439 feet, and the west 250 feet, except the north 416 feet, of the Southwest Quarter of the Southwest Quarter of Section 3, Township 31 North, Range 22 West, have caused the same to be surveyed and platted as RONDEAU LAKE ADDITION and hereby dedicate and donate to the public for public use forever the roads, highways, and easements as shown on the annexed plat. In witness whereof we have hereunto set our hands and seal this 17 day of July 1968 A.D.

In presence of Evelyn A. West Witness
William G. Anderson Witness

El Rehbein and Son Inc.
Elsworth H. Rehbein President
Kenneth E. Rehbein Vice President

State of Minnesota } ss.
County of Anoka }
On this 17 day of July 1968 A.D., before me, a notary public, within and for said County and State, personally appeared Elsworth H. Rehbein, and Kenneth E. Rehbein, to me personally known, who being by me, each duly sworn, did say that they are, respectively the President and Vice President of El Rehbein and Son, Inc., the corporation named in the foregoing instrument, that the seal affixed to said instrument is the corporate seal of said corporation, and that said instrument was signed and sealed in behalf of said corporation by authority of its Board of Directors, and said Elsworth H. Rehbein and Kenneth E. Rehbein acknowledge said instrument to be the free act and deed of said corporation.

Evelyn A. West
Notary Public, Anoka County, Minn.
Evelyn A. West
Notary Public, Anoka County, Minn.
My Commission Expires, Oct. 17, 1974

I do hereby certify that I have surveyed and platted the property described on this plat as RONDEAU LAKE ADDITION; that this plat is a correct representation of said survey; that all distances are correctly shown on the plat in feet and decimals of a foot; that the monuments for the guidance of future surveys have been correctly placed in the ground as shown on the plat; that the outside boundary lines are correctly designated on the plat, and that there are no wet lands or public highways to be designated on said plat other than as shown.

James S. Kurth
Surveyor - Minnesota Registration No. 7332

state of Minnesota } ss.
County of Anoka }
Above certificate subscribed and sworn to before me, a notary public, within and for said County and State this 17 day of July 1968 A.D.

Jeanne M. Kurth
Notary Public, Anoka County, Minn.
JEANNE M. KURTH
Notary Public, Anoka County, Minn.
My Commission Expires Mar. 13, 1970.

Checked and approved this 24th day of September 1968 A.D.
Roland W. Anderson
County Surveyor Anoka County, Minn.

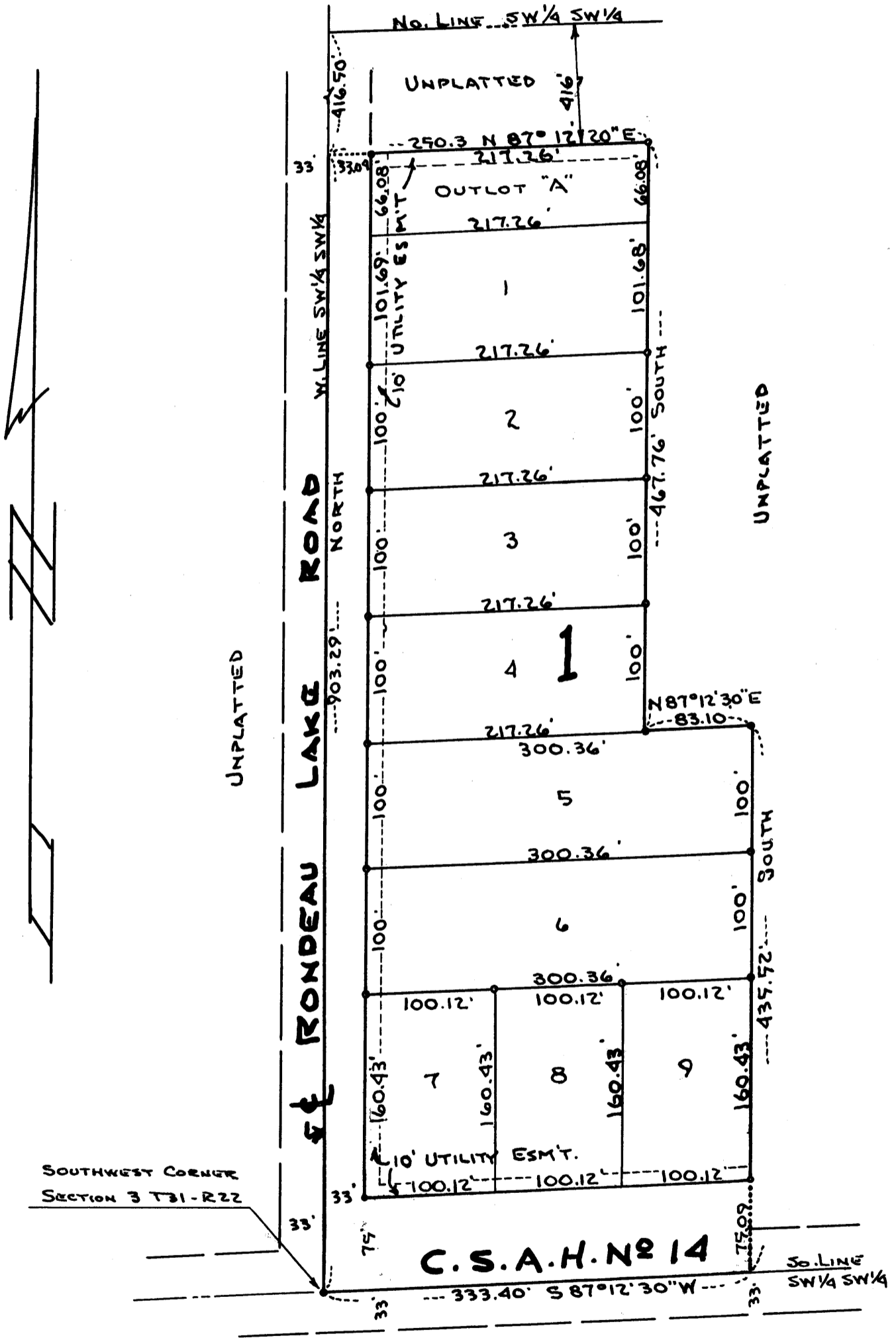
Approved by the Village Council of the Village of Lino Lakes this 29th day of April 1968 A.D.

Jeanne L. Emerton
Village Clerk
Robert M. L. Miller
Mayor

TAXES PAID

This 14 day of July 1968
Kenneth W. Campbell
Auditor, Anoka County, Minn.
Deputy

I HEREBY CERTIFY THAT THE TAXES PAYABLE IN THE YEAR 1968 ON THE LAND DESCRIBED WITHIN ARE PAID
Robert O. Peterson
Anoka County Treasurer



J.L. KURTH - SURVEYOR

OFFICE OF REGISTER OF DEEDS
STATE OF MINNESOTA, COUNTY OF ANOKA } ss.
I hereby certify that the within instrument was filed in this office for record on the 17 day of SEP 24 1968 A.D., at 11 o'clock A.M., and was duly recorded in book 2 of Plats, page 18.
Fred J. Lundahl
Reg. of Deeds
By Margaret R. ... Deputy