

ROSLYN HEIGHTS

CITY of COLUMBIA HEIGHTS

HAMILTONS ADDITION TO MECHANICSVILLE

Minder Engineering Co., Inc.
Engineers and Surveyors

KNOW ALL MEN BY THESE PRESENTS: that Meritt Corporation, a Minnesota Corporation, owners and proprietors of the following described property situate in the State of Minnesota, and County of Anoka to-wit: Lots 1 through 15 inclusive, Block 1, Roslyn Park, Anoka County, Minnesota, and the vacated West 3 feet of 7th Street N.E. ^{lying immediately adjacent} have caused the same to be surveyed and platted as ROSLYN HEIGHTS, and do hereby donate and dedicate to the public for public use forever the alley as shown on the annexed plat. In witness whereof said Meritt Corporation, has caused these presents to be signed by its proper officers and its corporate seal to be hereunto affixed this 1st day of MAY A.D. 1957.

In Presents of
Harold B. Kline and Milton L. Chojin As to Marvin Wolfenson
Harold B. Kline and Milton L. Chojin As to Harvey B. Ratner
MERITT CORPORATION
Marvin Wolfenson President
Harvey B. Ratner Secretary

State of Minnesota } s.s. On this 1st day of MAY A.D. 1957, before me a Notary Public within and for said County and State personally appeared Marvin Wolfenson and Harvey B. Ratner, to me personally known, who being each by me duly sworn, did say that they are the President and Secretary, respectively of Meritt Corporation, the corporation named in the foregoing instrument; that the seal affixed to said instrument is the Corporate seal of said Corporation, and that said instrument was signed and sealed in behalf of said corporation by authority of its Board of Directors and said Marvin Wolfenson and Harvey B. Ratner acknowledged said instrument to be the free act and deed of said corporation.

R. W. Mason
Notary Public, Hennepin County, Minnesota
My Commission Expires May 23, 1958

I do hereby certify that I have surveyed and platted the property described on this plat as ROSLYN HEIGHTS; that this plat is a correct representation of said survey; that all distances are correctly shown on the plat in feet and decimals of a foot; that the monuments for the guidance of future surveys have been correctly placed in the ground as shown on the plat; that the outside boundary lines are correctly designated on the plat; that the topography of the land is correctly shown on the plat; and that there are no wet lands or public highways to be designated on said plat other than shown thereon.

E. A. Rattman
Minnesota Registered Land Surveyor - Reg. No. 3795

State of Minnesota } s.s. Above certificate subscribed and sworn to before me, a Notary Public within and for said County and State, this 29 day of April A.D. 1957.

Leo Schuch
Notary Public, Hennepin County, Minnesota
My Commission Expires 1961

This plat was approved and accepted by the City Council of Columbia Heights, Minnesota at a regular meeting thereof held this 30th day of April A.D. 1957. In witness whereof, we have hereunto set our hands and seals.

CITY COUNCIL of COLUMBIA HEIGHTS, MINNESOTA
by John P. Stojan its Mayor
by Broella C. Hansen its City Clerk

This plat was approved as to form and execution on this 30th day of April A.D. 1957.

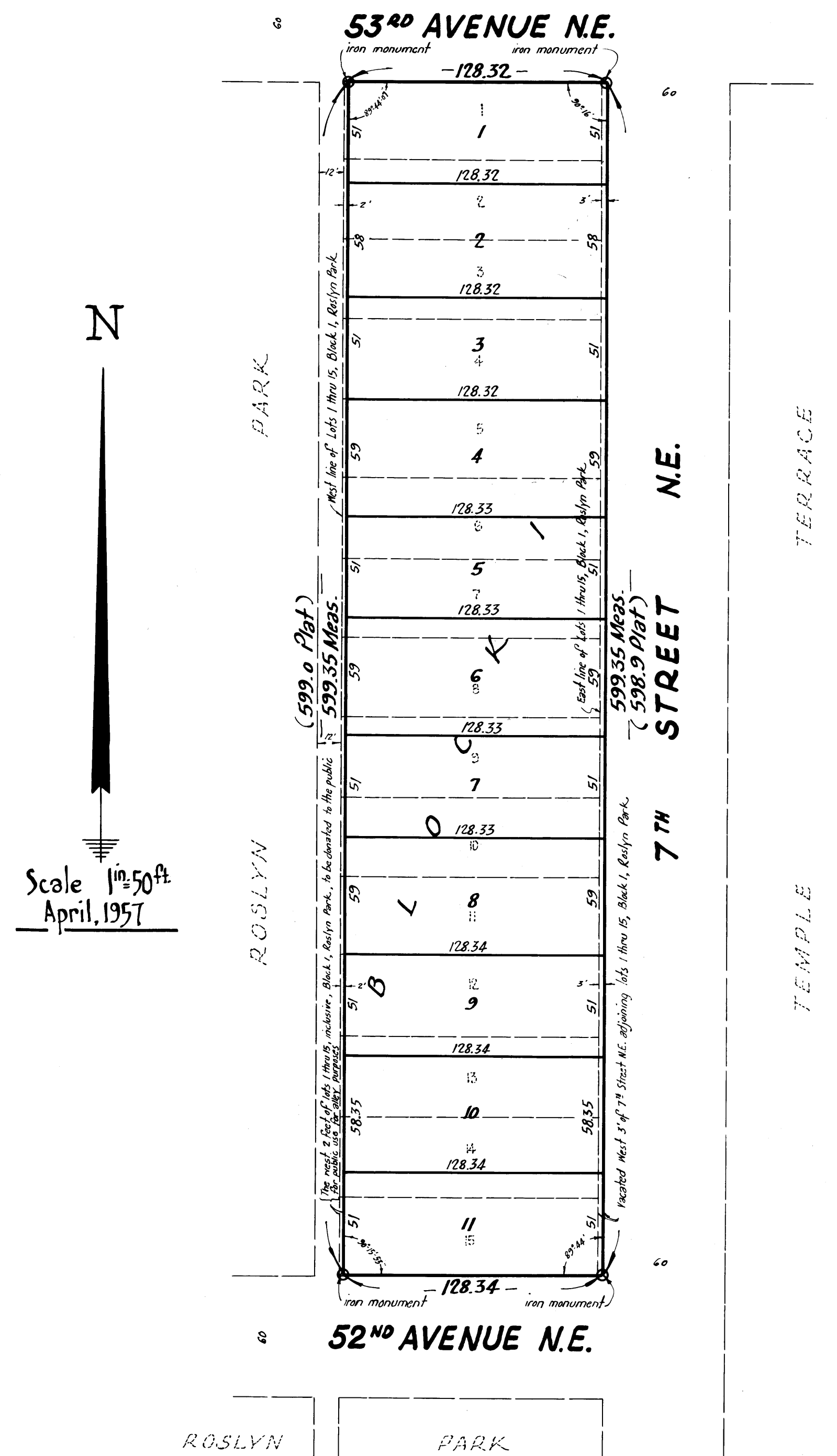
28th May 57
Ernest W. Campbell
Eileen E. Berg Deputy

I HEREBY CERTIFY THAT TAXES FOR THE YEAR 1956 ON THE LANDS DESCRIBED WITHIN ARE PAID
Thelma B. Brown

Joseph E. Wangs
City Attorney, Columbia Heights, Minnesota

OFFICE OF REGISTER OF DEEDS
STATE OF MINNESOTA, COUNTY OF ANOKA } ss
I hereby certify that the within instrument was filed in this office for record on the 5 day of JUN 1957, and was duly recorded in book 2 of Plats on page 4
Gertrude Skinner
Deputy
Margaret Russell Deputy

JUN 5 1957
Gertrude Skinner
Eileen Bretcher



Scale 1"=50ft
April, 1957