

OFFICIAL PLAT

1971316.001 Abstract  
OFFICE OF COUNTY RECORDER  
STATE OF MINNESOTA, COUNTY OF ANOKA  
I hereby certify that the within instru-  
ment was duly recorded in the office of the recorder  
on the 10th Dec. A.D. 2004  
11:36 o'clock A.M., and was duly recorded  
in book 68 page 37  
Maureen J Devine  
County Recorder  
By EIC

ROWE ADDITION

BK 68 of Anok 37

City of Ramsey  
County of Anoka  
Sec. 3, Twp. 32, Rge. 25

KNOW ALL PERSONS BY THESE PRESENTS: That Rowe Properties, LLC, a Minnesota Limited Liability Company, owner and proprietor of the following described property situated in the County of Anoka, State of Minnesota, to-wit:

That part of the Northeast Quarter of the Southeast Quarter of Section 3, Township 32, Range 25, Anoka County, Minnesota, described as follows:

Beginning at a point on the north line thereof, distant 195.75 feet easterly of the northwest corner of said Northeast Quarter of the Southeast Quarter; thence South 89 degrees 27 minutes 56 seconds East, assumed bearing, along said north line, a distance of 100.02 feet; thence South 01 degree 47 minutes 38 seconds West a distance of 427.39 feet; thence South 40 degrees 18 minutes 19 seconds East a distance of 42.25 feet; thence South 82 degrees 24 minutes 16 seconds East a distance of 76.65 feet; thence South 05 degrees 16 minutes 11 seconds West a distance of 208.62 feet; thence North 89 degrees 27 minutes 56 seconds West a distance of 314.09 feet to the east line of the west 66.00 feet of said Northeast Quarter of the Southeast Quarter; thence North 01 degree 08 minutes 50 seconds East, along said east line, a distance of 219.11 feet; thence South 89 degrees 27 minutes 56 seconds East, a distance of 124.58 feet to a line which bears South 01 degree 47 minutes 38 seconds West from the point of beginning; thence North 01 degree 47 minutes 38 seconds East a distance of 457.60 feet to the point of beginning.

Has caused the same to be surveyed and platted as ROWE ADDITION and does hereby donate and dedicate to the public for public use forever the road, and drainage and utility easements as shown on the plat. Also dedicating to the County of Anoka the right of access onto County Road No. 63 as shown on the plat, in witness whereof said Rowe Properties, LLC has caused these presents to be signed by its proper officer this 10th day of December 2004.

ROWE PROPERTIES, LLC:

John A. Rowe, as President

STATE OF MN ) The foregoing instrument was acknowledged before me this 10th day of Dec.  
COUNTY OF ANOKA ) 2004 by John A Rowe, as President of Rowe Properties, LLC, a Minnesota Limited Liability Company on behalf of the company.

JOANNE SHAW  
Notary Public  
Minnesota  
My Commission Expires Jan. 31, 2005

Joann Shaw  
Notary Public, Anoka County, Minnesota  
My Commission expires 1-31-05

I hereby certify that I have surveyed and platted the land described in the dedication on this plat as ROWE ADDITION; that this plat is a correct representation of said survey; that all distances are correctly shown on said plat in feet and hundredths of a foot; that all monuments have been correctly placed in the ground as shown, or shall be correctly placed in the ground within one year after the recording date of this plat; that the outside boundaries are correctly designated on said plat; and that there are no wetlands, in accordance with M.S. 505.02 Subdivision 1, or public highways to be designated on said plat other than as shown thereon.

Jeffrey N. Caine  
Jeffrey N. Caine Registered Land Surveyor  
Minnesota License No. 12251

STATE OF MINNESOTA ) The surveyors certificate was acknowledged before me a Notary Public, this 9th day of  
COUNTY OF ANOKA ) December, 2004, by Jeffrey N. Caine, Land Surveyor.

JEFFREY N. CAINE  
Notary Public, Anoka County, Minnesota  
My Commission Expires 01-31-05

Jeffrey N. Caine  
Notary Public, Anoka County, Minnesota  
My Commission expires 01-31-05

CITY OF RAMSEY

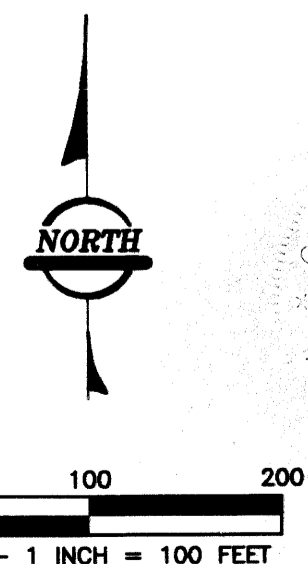
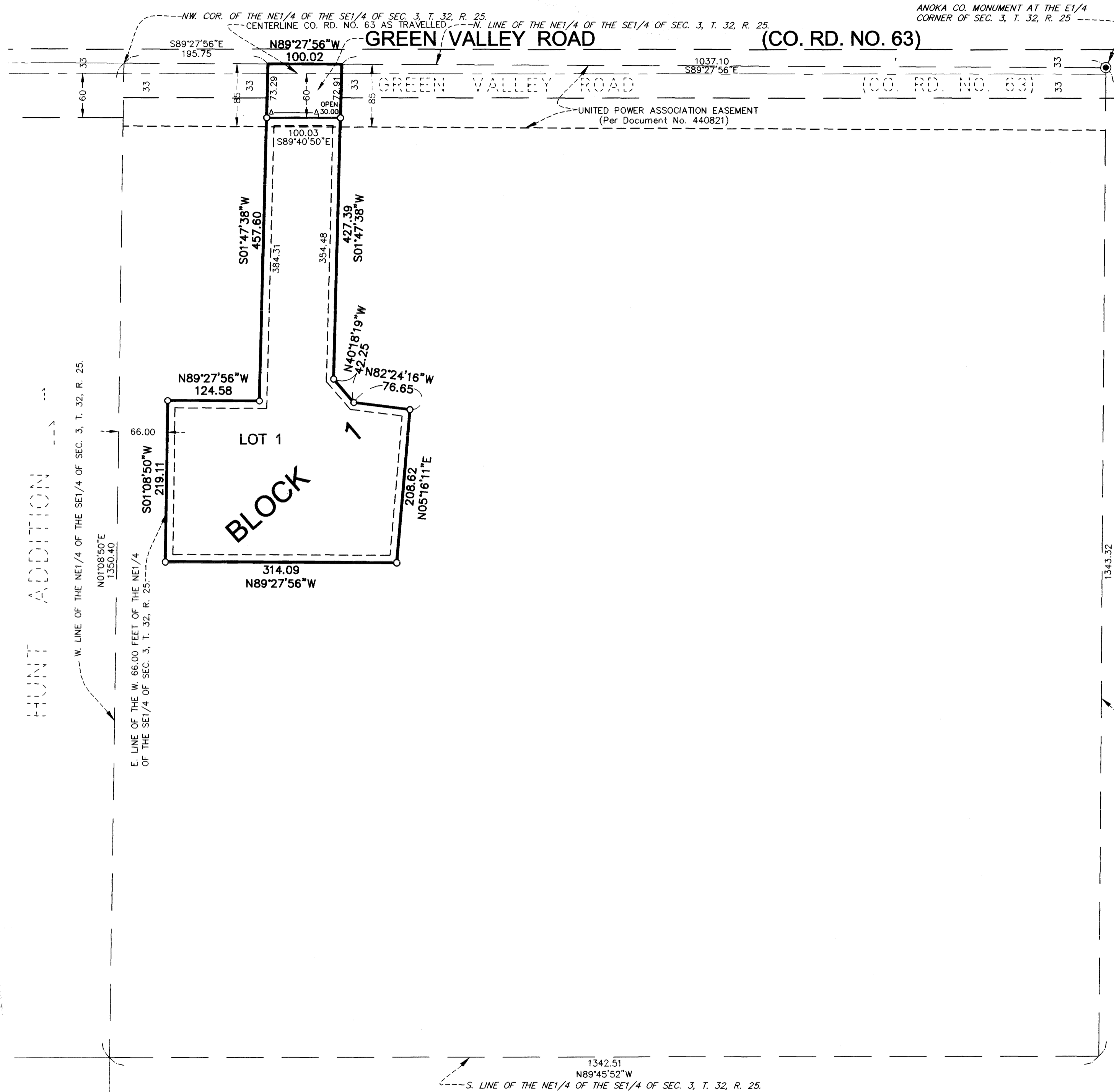
We hereby certify that the City Council of the City of Ramsey, Anoka County, Minnesota, duly accepted and approved the plat of ROWE ADDITION at a regular meeting held this 23rd day of November, 2004. If applicable, the written comments and recommendations of the Commissioner of Transportation and the County Highway Engineer have been received by the city or the prescribed 30 day period has elapsed without receipt of such comments and recommendations, as provided by Minn. Statutes, Section 509.03, Subd. 2.

By [Signature] Mayor

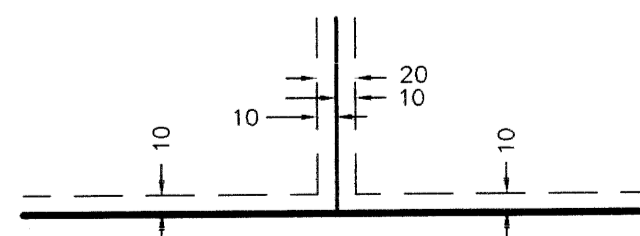
Checked and approved this 10th day of DECEMBER, 2004

By [Signature] Anoka County Surveyor

Dec. 10, 2004  
J. Culver



DRAINAGE AND UTILITY EASEMENTS SHOWN THUS:



BEING 10 FEET WIDE ON EACH SIDE OF ALL LOT LINES UNLESS OTHERWISE SHOWN ON THE PLAT.

- 4 DENOTES "RIGHT OF ACCESS" BEING DEDICATED TO THE COUNTY OF ANOKA.
- DENOTES FOUND MONUMENT.
- DENOTES A MONUMENT REQUIRED BY MINNESOTA STATE STATUTE WHICH WILL BE SET WITHIN ONE YEAR OF THE RECORDING DATE OF THIS PLAT, AND SHALL BE EVIDENCED BY A 1/2" INCH BY 14 INCH IRON PIPE MARKED BY RLS 12251.
- ⊙ DENOTES ANOKA COUNTY MONUMENT.

For the purposes of this plat, the north line of the Northeast Quarter of the Southeast Quarter of Section 3, Township 32, Range 25, Anoka County, Minnesota, is assumed to bear N89°27'56"W.



RLK - Kuusisto, Ltd.

\$155.00