

# ROWE SECOND ADDITION

KNOW ALL PERSONS BY THESE PRESENTS: That John A. Rowe and Sharon R. Rowe, husband and wife, owners of the following described property:

That part of the West Half of the Northeast Quarter of Section 10, Township 32, Range 25, Anoka County, Minnesota, lying North of the South 550 feet thereof, and lying Southerly of the following described line:

Beginning at a point on the West line of said West Half of the Northeast Quarter distant 130 feet Southerly of the Northwest corner of the Southwest Quarter of said Northeast Quarter, for the purposes of this description, said West line is assumed to bear South 0 degrees 37 minutes 06 seconds East; thence North 89 degrees 52 minutes 21 seconds East, parallel with the North line of said Southwest Quarter of the Northeast Quarter, 517.93 feet; thence North 0 degrees 37 minutes 06 seconds West a distance of 130 feet to the North line of said Southwest Quarter of the Northeast Quarter; thence North 82 degrees 13 minutes 32 seconds East a distance of 330 feet; thence South 0 degrees 37 minutes 06 seconds East a distance of 43.91 feet to the North line of said Southwest Quarter of the Northeast Quarter; thence North 89 degrees 52 minutes 21 seconds East, along said North line, a distance of 298.70 feet; thence South 0 degrees 37 minutes 06 seconds East a distance of 130 feet; thence North 89 degrees 52 minutes 21 seconds East, parallel with said North line, a distance of 198.97 feet to the East line of said West Half of the Northeast Quarter, said line there terminating.

Have caused the same to be surveyed and platted as ROWE SECOND ADDITION and do hereby dedicate to the public for public use the public way and the drainage and utility easements as shown on this plat.

In witness whereof said John A. Rowe and Sharon R. Rowe, husband and wife, have hereunto set their hands this 8<sup>th</sup> day of May, 2015.

John A. Rowe  
John A. Rowe

Sharon R. Rowe  
Sharon R. Rowe

STATE OF MINNESOTA  
COUNTY OF Anoka

This instrument was acknowledged before me this 8<sup>th</sup> day of May, 2015 by John A. Rowe and Sharon R. Rowe, husband and wife.

Jan E. Shaw  
Notary Public, Minnesota  
My commission expires 11/31/20

I Charles R. Christopherson do hereby certify that this plat was prepared by me or under my direct supervision; that I am a duly Licensed Land Surveyor in the State of Minnesota; that this plat is a correct representation of the boundary survey; that all mathematical data and labels are correctly designated on this plat; that all monuments depicted on this plat have been, or will be correctly set within one year; that all water boundaries and wet lands, as defined in Minnesota Statutes, Section 505.01, Subd. 3, as of the date of this certificate are shown and labeled on this plat; and all public ways are shown and labeled on this plat.

Dated this 7<sup>th</sup> day of May, 2015.

Ch. R. Christopherson  
Charles R. Christopherson, Licensed Land Surveyor  
Minnesota License No. 18420

STATE OF MINNESOTA  
COUNTY OF ANOKA

This instrument was acknowledged before me this 7<sup>th</sup> day of May, 2015, by Charles R. Christopherson.

Seth M. Monroe  
Seth M. Monroe  
Notary Public, Minnesota  
My commission expires January 31, 2019

City Council, City of Ramsey, Minnesota

This plat of ROWE SECOND ADDITION was approved and accepted by the City Council of the City of Ramsey, Minnesota at a regular meeting thereof held this 3<sup>rd</sup> day of March, 2015, and said plat is in compliance with the provisions of Minnesota Statutes, Section 505.03, Subd. 2.

City Council, City of Ramsey, Minnesota

By: Saul Strom, Mayor  
By: Robert M. Healy, Clerk

ANOKA COUNTY SURVEYOR

I hereby certify that in accordance with Minnesota Statutes, Section 505.021, Subd. 11, this plat has been reviewed and approved this 5<sup>th</sup> day of June, 2015.

Larry D. Holm  
Larry D. Holm,  
Anoka County Surveyor

ANOKA COUNTY AUDITOR/TREASURER

Pursuant to Minnesota Statutes, Section 505.021, Subd. 9, taxes payable in the year 2015 on the land hereinbefore described have been paid. Also, pursuant to Minnesota Statutes, Section 272.12, there are no delinquent taxes and transfer entered this 5<sup>th</sup> day of June, 2015.

Jonell M. Sawyer  
Property Tax Administrator

By: Nick White, Deputy

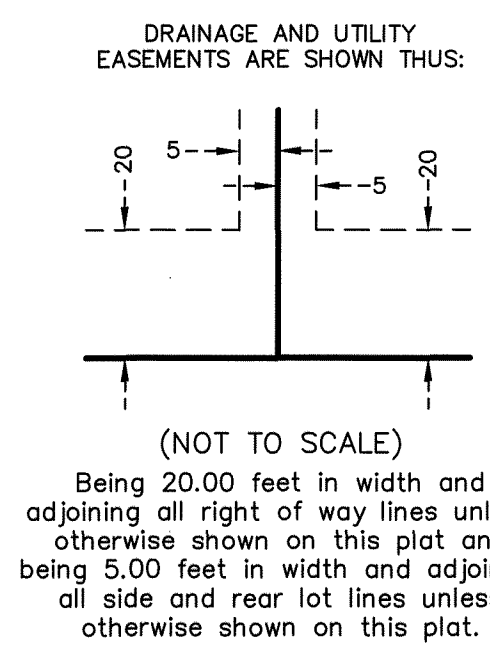
ANOKA COUNTY RECORDER/REGISTRAR OF TITLES

County of Anoka, State of Minnesota

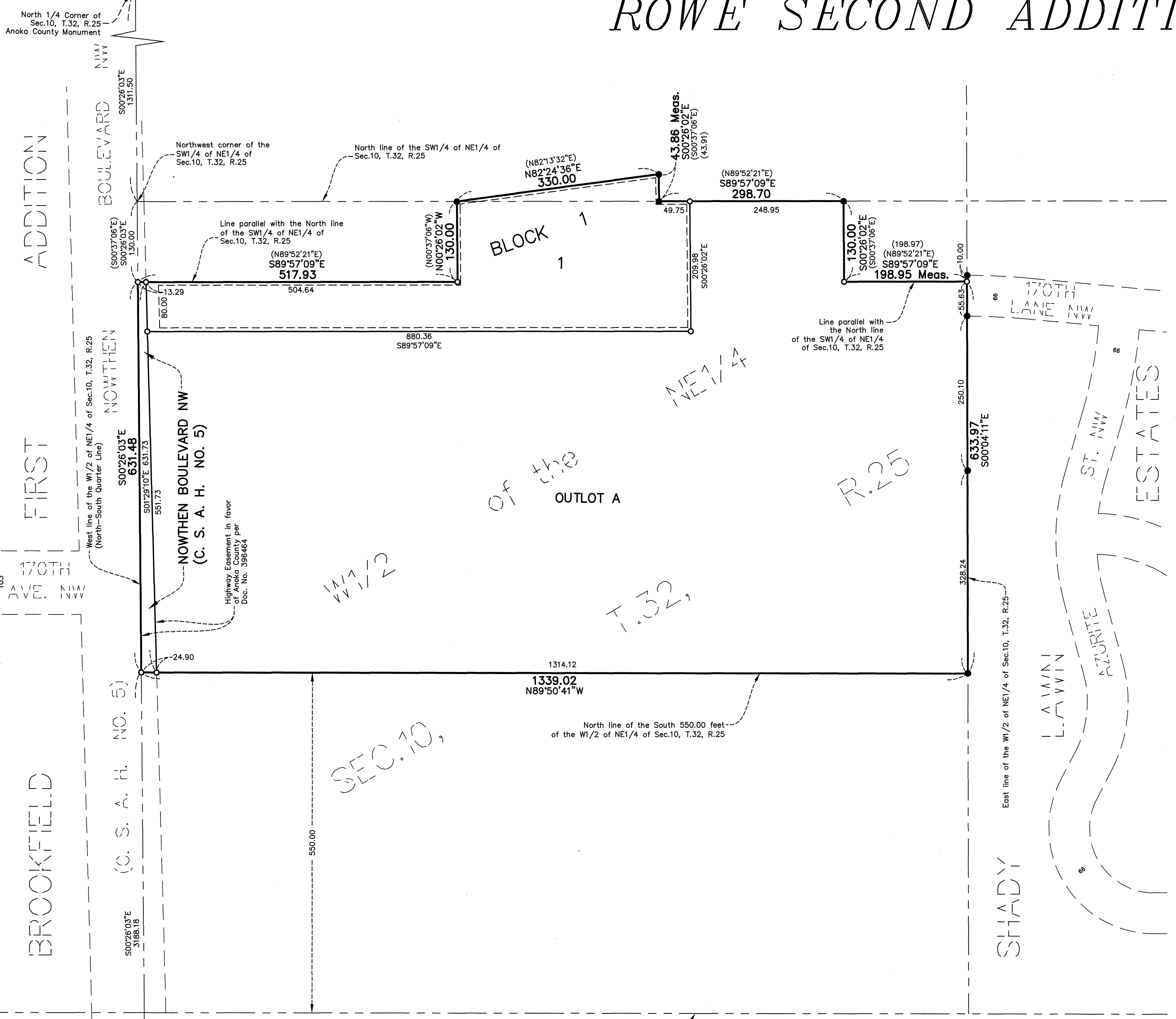
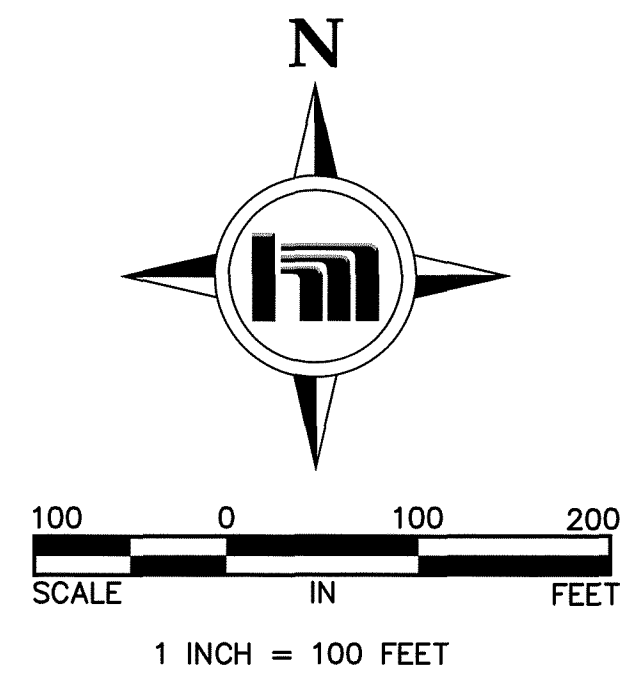
I hereby certify that this plat of ROWE SECOND ADDITION was filed in the office of the County Recorder/Registrar of Titles for public record on this 5<sup>th</sup> day of June, 2015, at 2:03 o'clock P.M. and was duly recorded in Book 78 ABST Page 18, as Document Number 2109787.001.

Jonell M. Sawyer  
County Recorder/Registrar of Titles

By: Nick White, Deputy



- For the purposes of this plat the West line of the W1/2 of the NE1/4 of Sec. 10, T.32, R.25 is assumed to bear S00°26'02"E.
- Denotes 1/2 inch by 14 inch iron monument set and marked with Minnesota License No. 18420.
- Denotes found iron monument
- (S00°37'06"E) Denotes Deed Call
- Denotes Anoka County Monument



South 1/4 Corner of Sec. 10, T.32, R.25 Anoka County Monument

North 1/4 Corner of Sec. 10, T.32, R.25 Anoka County Monument