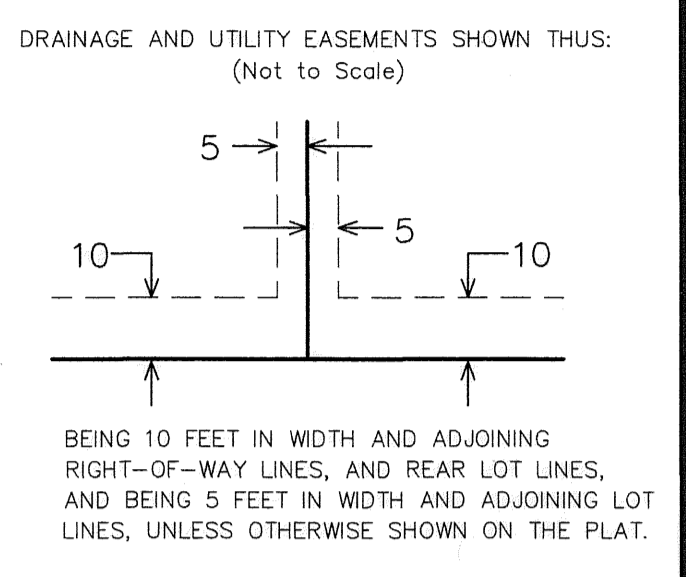
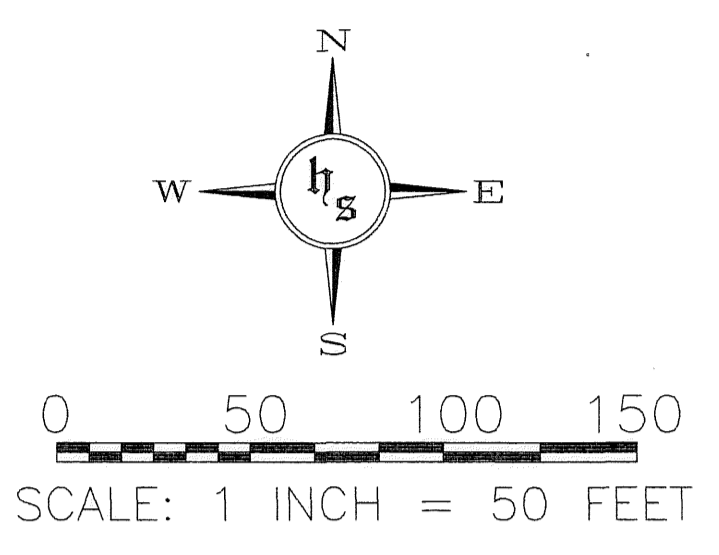
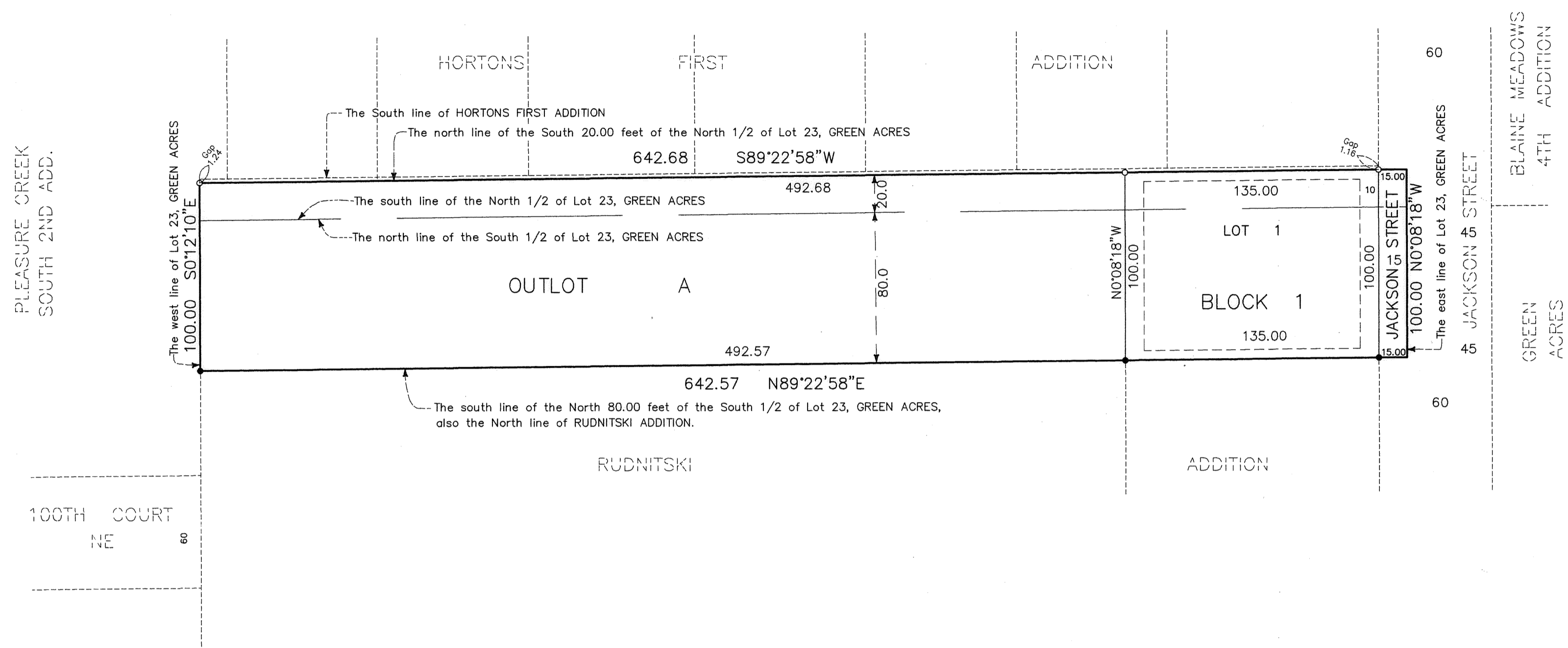


RUDNITSKI 2ND ADDITION

CITY OF BLAINE
COUNTY OF ANOKA
SECTION 30, TOWNSHIP 31, RANGE 23.



○ - DENOTES SET IRON MONUMENT.
● - DENOTES IRON MONUMENT FOUND.

FOR THE PURPOSES OF THIS PLAT THE SOUTH LINE OF THE NORTH 80 FEET OF THE SOUTH HALF OF LOT 23, GREEN ACRES, HAS AN ASSUMED BEARING OF NORTH 89°22'58" EAST.

KNOW ALL MEN BY THESE PRESENTS: That Stephen D. Olson and William G. Olson, as Trustees of the Anna L. Olson Trust, created under agreement dated August 2, 2006, owners of the following described property situated in the County of Anoka, State of Minnesota, to-wit:

The North 80 feet of the South one-half and the South 20 feet of the North one-half of Lot 23, Green Acres Addition, Anoka County, Minnesota; according to the duly recorded plat thereof.

Have caused the same to be surveyed and platted as RUDNITSKI 2ND ADDITION, and do hereby dedicate to the public for public use the public way and the easements for drainage and utility purposes as shown on this plat. In witness whereof said Stephen D. Olson and William G. Olson, Trustees of the Anna L. Olson Trust, created under agreement dated August 2, 2006, have hereunto set their hands this 3 day of June, 2009.

Signed: The Anna L. Olson Trust
Stephen D. Olson Trustee
William G. Olson Trustee
 Stephen D. Olson, Trustee
 William G. Olson, Trustee

State of Minnesota
 County of Anoka
 The foregoing instrument was acknowledged before me this 3rd day of June, 2009 by Stephen D. Olson and William G. Olson, Trustees of the Anna L. Olson Trust, created under agreement dated August 2, 2006, on behalf of said Trust.

Dynelle M. Closson
 Notary Public, Anoka County, Minnesota
 My Commission Expires January 31, 2010

I, Milton E. Hyland, a duly Licensed Land Surveyor under the laws of the State of Minnesota, do hereby certify that I have surveyed or directly supervised the survey of the property described on this plat; prepared this plat or directly supervised the preparation of this plat of RUDNITSKI 2ND ADDITION; that this plat is a correct representation of the boundary survey; that all mathematical data and labels are correctly designated on this plat; that all monuments depicted on this plat have been, or will be correctly set within one year as indicated on this plat; that all water boundaries and wet lands, as defined in Minnesota Statutes, Section 505.01, Subd. 3, as of the date of this certificate are shown and labeled on this plat; and all public ways are shown and labeled on this plat.
 Dated this 28th day of May, 2009.

Milton E. Hyland
 Milton E. Hyland, Professional Land Surveyor
 Minnesota License No. 20262

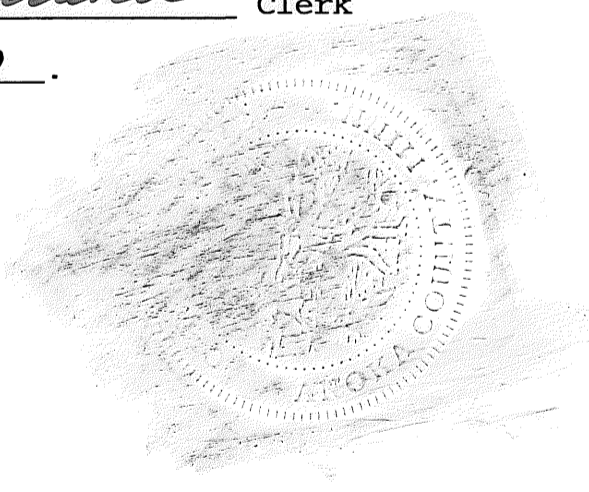
State of Minnesota
 County of Hennepin
 The foregoing instrument was acknowledged before me this 28th day of May, 2009, by Milton E. Hyland, Professional Land Surveyor.

Ruthanne Mary Hyland
 Ruthanne Mary Hyland, Notary Public
 Hennepin County, Minnesota
 My Commission Expires January 31, 2010

CITY COUNCIL
 BLAINE, MINNESOTA
 The plat of RUDNITSKI 2ND ADDITION was approved and accepted by the City Council of the City of Blaine, Minnesota, at a regular meeting held this 21st day of May, 2009, and said plat is in compliance with the provisions of Minnesota Statutes, Section 505.03, Subd. 2.

By: Law Ege Mayor By: Catherine Ekstrand Clerk
 Checked and approved this 4th day of June, 2009.

By: Larry D. Hoium
 Larry D. Hoium, Anoka County Surveyor
 by Charles F. Getzen, Deputy



2007879.001
 OFFICE OF COUNTY RECORDER
 STATE OF MINNESOTA, COUNTY OF ANOKA
 I hereby certify that the within instrument was filed in this office for record on the June 4 A.D. 2009 at 8:46 o'clock AM, and was duly recorded in book 75 page 3
Maurice A. Devine
 County Recorder
 by Shubert

I HEREBY CERTIFY THAT THE CURRENT AND DELINQUENT TAXES ON THE LANDS DESCRIBED WITHIN ARE PAID AND THE FRANCHISE IS ENTERED
Maurice A. Devine
 MAURICE A. DEVINE
 PROPERTY TAX ADMINISTRATOR
 by Shubert
 DEPUTY PROPERTY TAX ADMINISTRATOR