

RUM ACRE ESTATES 2ND ADDITION

City of Ramsey, Anoka County

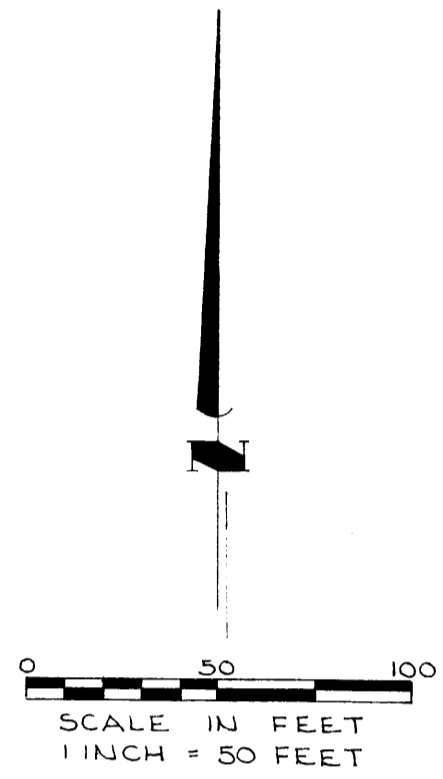
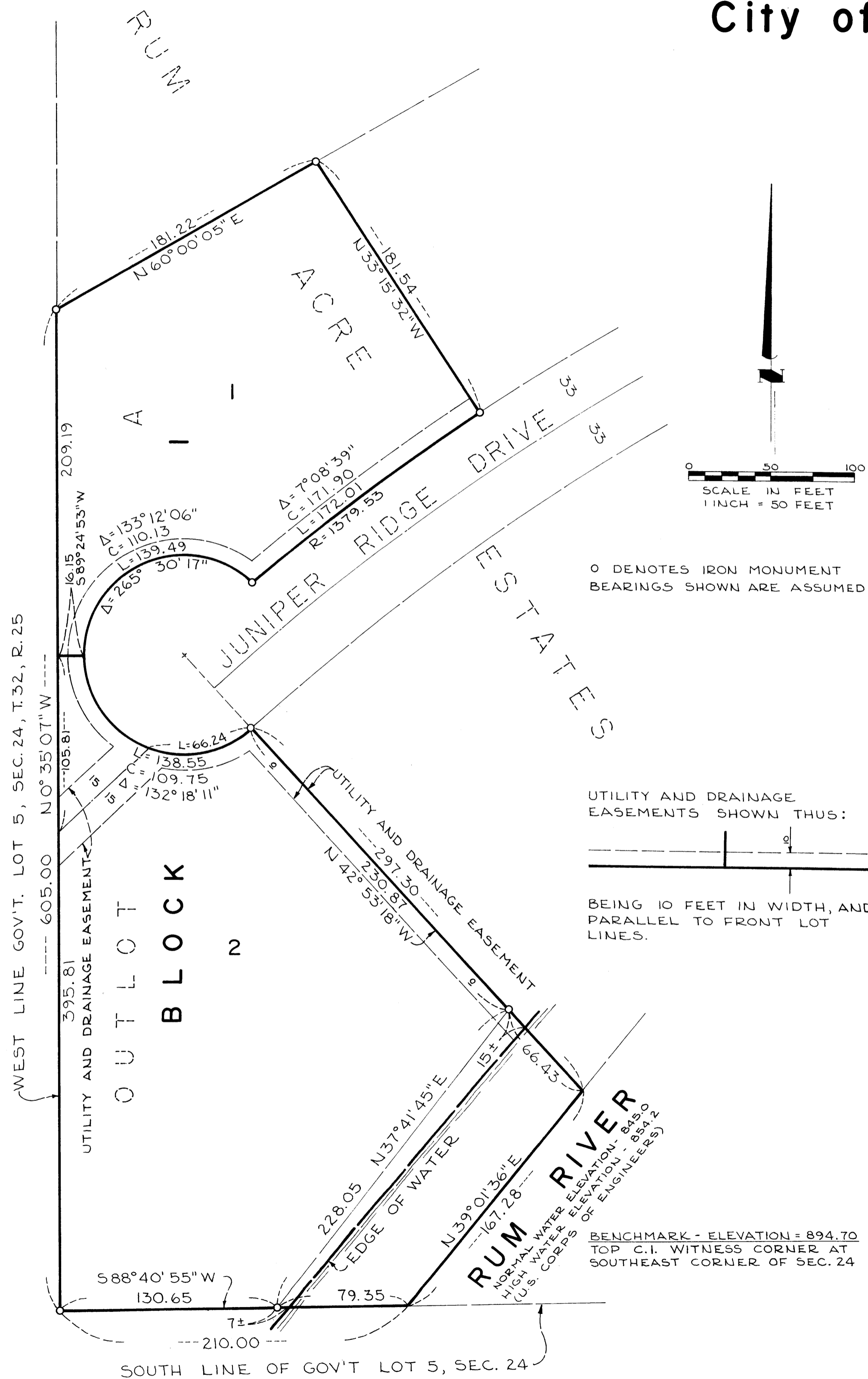
BINDING

FOR

RESERVED

SPACE

THIS



0 DENOTES IRON MONUMENT
BEARINGS SHOWN ARE ASSUMED

UTILITY AND DRAINAGE
EASEMENTS SHOWN THUS:

BEING 10 FEET IN WIDTH, AND
PARALLEL TO FRONT LOT
LINES.

OFFICE OF COUNTY RECORDER
STATE OF MINNESOTA, COUNTY OF ANOKA
I hereby certify that the within instru-
ment was filed in this office for record
on the 26th day of July, 1976
A.D., 1976
11:16 o'clock A.M., and was duly recorded
in book 209 plate 17
Fred J. Amdahl
County Recorder
By W. L. Holmquist
Deputy

BENCHMARK - ELEVATION = 894.70
TOP C.I. WITNESS CORNER AT
SOUTHEAST CORNER OF SEC. 24
NORMAL WATER ELEVATION - 849.0
HIGH WATER ELEVATION - 854.2
(U.S. CORPS OF ENGINEERS)

KNOW ALL MEN BY THESE PRESENTS: That Rum Acres & Co., a partnership of John M. Miller and Robert J. Neary, fee owner, of the following described property situated in the State of Minnesota, County of Anoka to wit:

Outlot A, RUM ACRE ESTATES, according to the recorded plat thereof.

Has caused the same to be surveyed and platted as RUM ACRE ESTATES 2ND ADDITION and dedicate to the public for public use forever the easements for utility and drainage shown on the plat.

In witness whereof said John M. Miller and Robert J. Neary, the partners of Rum Acres & Co., have hereunto set their hands this 28th day of July, 1976.

SIGNED:

RUM ACRES & CO.

By: John M. Miller
John M. Miller, Partner

By: Robert J. Neary
Robert J. Neary, Partner

STATE OF MINNESOTA
COUNTY OF HENNEPIN

The foregoing instrument was acknowledged before me this 28th day of July, 1976, by John M. Miller, partner and Robert J. Neary, partner on behalf of Rum Acres & Co., a partnership.

Erlyn Westphal
Notary Public, Hennepin County, Minnesota
My Commission Expires 2/19/81

I hereby certify that I have surveyed and platted the property described on this plat as RUM ACRE 2ND ADDITION, that this plat is a correct representation of said survey; that all distances are correctly shown on the plat in feet and hundredths of a foot; that all monuments have been correctly placed in the ground as shown on the plat and that the outside boundary lines are correctly designated on the plat.

Thomas S. Bergquist
Thomas S. Bergquist
Land Surveyor, Minn. Reg. No. 7725

STATE OF MINNESOTA
COUNTY OF SHERBURNE

The foregoing instrument was acknowledged before me this 26th day of July, A.D. 1976, by Thomas S. Bergquist, Land Surveyor.

Thomas J. Rauch
THOMAS J. RAUCH
Notary Public, Hennepin County, Minnesota
My Commission Expires Mar. 23, 1978

This plat has been checked and approved this 4th day of August, 1976.

Robert W. Anderson
Anoka County Surveyor

ESTATES
This plat of RUM ACRE 2ND ADDITION was approved by the Planning Commission of the City of Ramsey at a regular meeting thereof held this 24th day of June, 1976.

Gilley Smithberg Chairman
David & V. Waters Secretary

ESTATES
This plat of RUM ACRE 2ND ADDITION was approved by the City Council of the City of Ramsey at a regular meeting thereof held this 26th day of July, 1976.

Arnold S. Cox Chairman
David & V. Waters Secretary

"NO DELINQUENT TAXES
AND TRANSFER ENTERIES"

Aug 5 1976
Charles L. Lofgren
Auditor, Anoka County
By John Amdahl
Deputy