

RUM RIVER BLUFFS 2ND ADDITION

BK 79 Abst Pg 20

CITY OF ST. FRANCIS
COUNTY OF ANOKA
SEC. 32, TWP. 34, RGE. 24

KNOW ALL PERSONS BY THESE PRESENTS: That B L Holdings, LLC, a Minnesota limited liability company, owner of the following described property:

Outlot A, RUM RIVER BLUFFS, according to the recorded plat thereof, Anoka County, Minnesota

Has caused the same to be surveyed and platted as RUM RIVER BLUFFS 2ND ADDITION and does hereby dedicate to the public for public use the public ways and the drainage and utility easements as shown on this plat.

In witness whereof said B L Holdings, LLC, a Minnesota limited liability company, has caused these presents to be signed by its proper officer this 25th day of July, 2016.

B L Holdings, LLC
Lawrence J. Olson
Lawrence J. Olson, Vice President

STATE OF Minnesota
COUNTY OF Anoka

This instrument was acknowledged before me on July 25, 2016 by Lawrence J. Olson, Vice President of B L Holdings, LLC, a Minnesota limited liability company.

Balton Roberts
Balton Roberts
Notary Public, Anoka
My commission expires January 31, 2020

I Thomas R. Balluff do hereby certify that this plat was prepared by me or under my direct supervision; that I am a duly Licensed Land Surveyor in the State of Minnesota; that this plat is a correct representation of the boundary survey, that all mathematical data and labels are correctly designated on this plat; that all monuments depicted on this plat have been, or will be correctly set within one year; that all water boundaries and wet lands, as defined in Minnesota Statutes, Section 505.01, Subd. 3, as of the date of this certificate are shown and labeled on this plat; and all public ways are shown and labeled on this plat.

Dated this 21st day of July, 2016

Thomas R. Balluff
Thomas R. Balluff, Licensed Land Surveyor
Minnesota License No. 40361

STATE OF Minnesota
COUNTY OF Anoka

This instrument was acknowledged before me on July 21, 2016 by Thomas R. Balluff.

Stephanie Arlin Symoniak
Stephanie Arlin Symoniak
Notary Public, Hennepin
My commission expires 12/31/18

CITY COUNCIL, CITY OF ST. FRANCIS, MINNESOTA

This plat of RUM RIVER BLUFFS 2ND ADDITION was approved and accepted by the City Council of the City of St. Francis, Minnesota at a regular meeting thereof held this 18th day of July, 2016, and said plat is in compliance with the provisions of Minnesota Statutes, Section 505.03, Subd. 2.

CITY COUNCIL, CITY OF ST. FRANCIS, MINNESOTA

By: *[Signature]* Mayor By: *[Signature]* Clerk



COUNTY SURVEYOR

I hereby certify that in accordance with Minnesota Statutes, Section 505.021, Subd. 11, this plat has been reviewed and approved this 27th day of August, 2016.

Larry D. Hoff
Larry D. Hoff
Anoka County Surveyor

COUNTY AUDITOR/TREASURER

Pursuant to Minnesota Statutes, Section 505.021, Subd. 9, taxes payable in the year 2016 on the land hereinbefore described have been paid. Also, pursuant to Minnesota Statutes, Section 272.12, there are no delinquent taxes and transfer entered this 9th day of August, 2016.

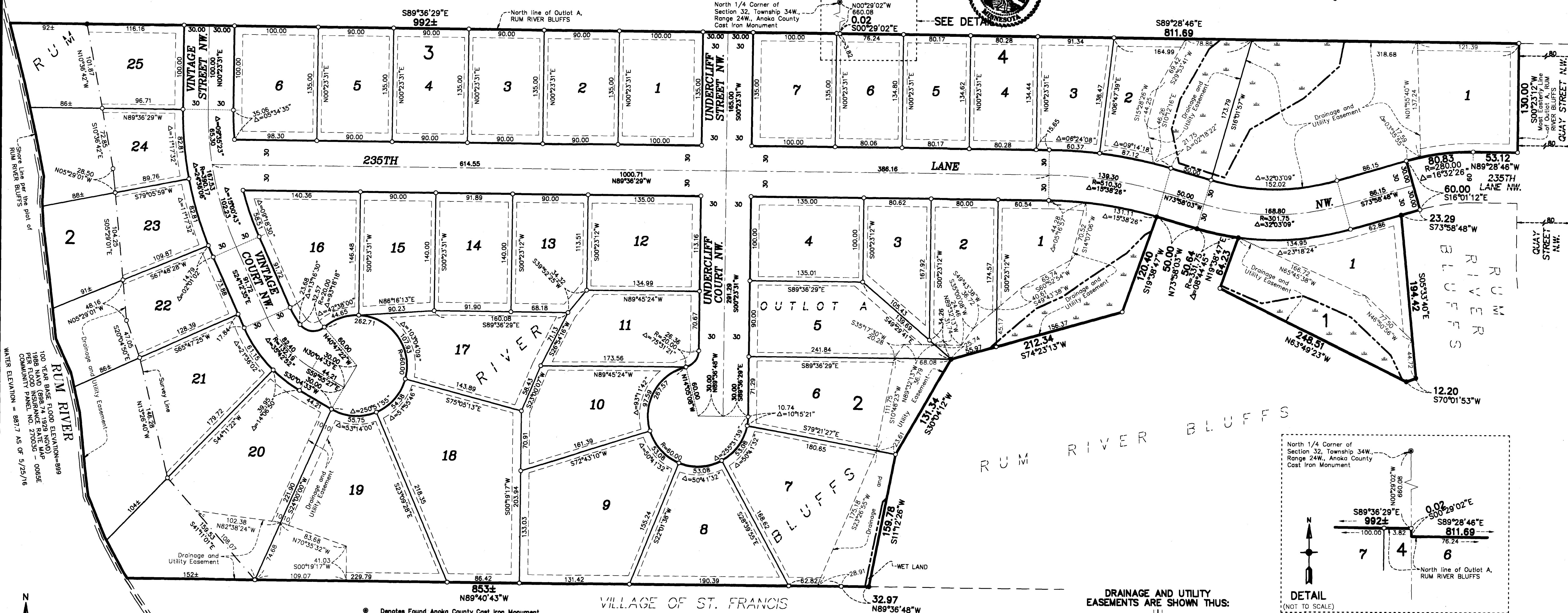
Jonell M. Sawyer
Jonell M. Sawyer
Property Tax Administrator
By: *[Signature]* Deputy

COUNTY RECORDER/REGISTRAR OF TITLES

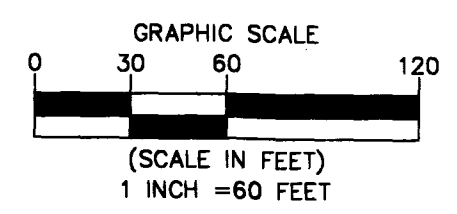
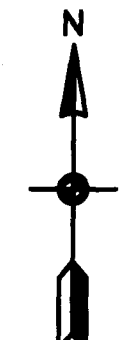
County of Anoka, State of Minnesota

I hereby certify that this plat of RUM RIVER BLUFFS 2ND ADDITION was filed in the office of the County Recorder/Registrar of Titles for public record on this 9th day of August, 2016 at 2:07 o'clock P.M. and was duly recorded in Book 79 Abst, Page 20, as Document Number 2145226.002

Jonell M. Sawyer
Jonell M. Sawyer
County Recorder/Registrar of Titles
By: *[Signature]* Deputy



100' TYP. BASE FLOOD ELEVATION=899
100' TYP. FLOOD ELEVATION=900
PER FLOOD INSURANCE MAP
COMMUNITY PARK NO. 270035 - 0085E
WATER ELEVATION = 897.7 AS OF 5/25/16



- Denotes Found Anoka County Cast Iron Monument
- Denotes 1/2 inch by 14 inch iron monument set or to be set within one year of recording of this plat and marked with license number 40361
- Denotes Found monument
- Denotes Wet Land

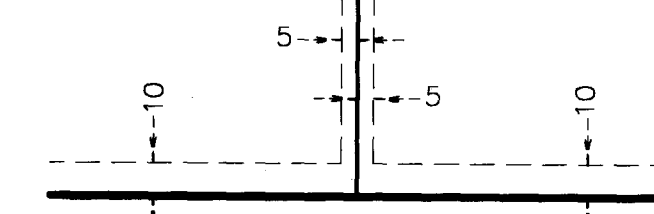
VILLAGE OF ST. FRANCIS

Benchmark: Top of Cast Iron Monument at the North Quarter Corner of Section 32, Township 34, Range 24
Elevation=922.04 (NGVD 1929)

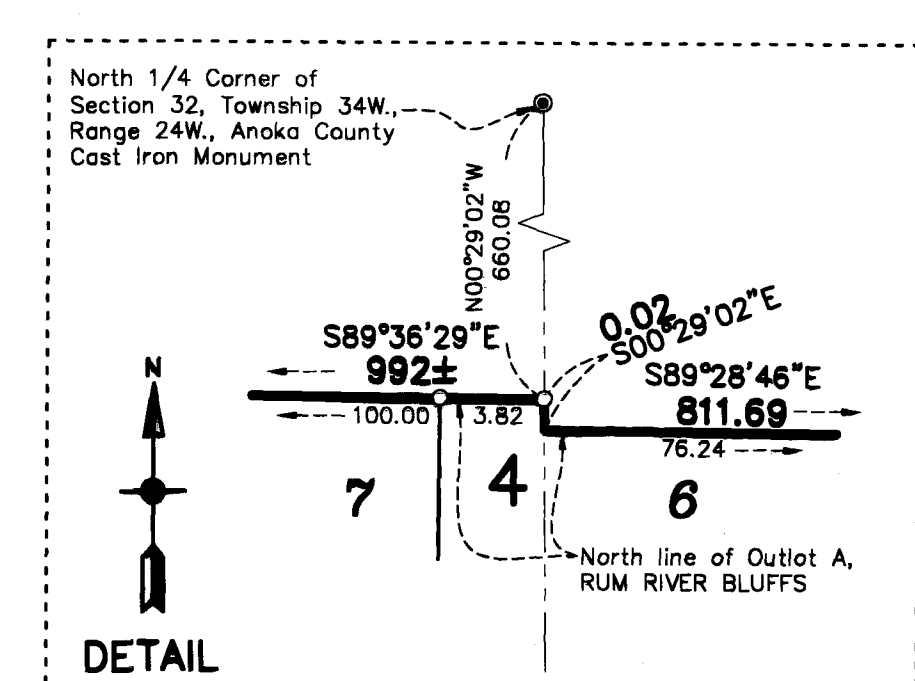
For the purposes of this plat, the Most Easterly line of Outlot A, RUM RIVER BLUFFS, is assumed to have a bearing of South 00 degrees 23 minutes 12 seconds West.

\$56.00

DRAINAGE AND UTILITY EASEMENTS ARE SHOWN THUS:



being 5 feet in width, and adjoining side lot lines and 10 feet in width and adjoining right of way lines and rear lot lines unless otherwise shown on this plat.



\$56.00

