

# RUM RIVER PRAIRIE

CITY OF RAMSEY  
COUNTY OF ANOKA  
SECTION 7, T. 32, R. 25

KNOW ALL PERSONS BY THESE PRESENTS: That RUM RIVER PRAIRIE, LLC, a Minnesota limited liability company, owner of the following described property:

The Southeast Quarter of the Northeast Quarter and the Southwest Quarter of the Northeast Quarter of Section 7, Township 32, Range 25, Anoka County, Minnesota, except that part that has been platted as Anoka County Highway Right of Way Plat No. 33

Has caused the same to be surveyed and platted as RUM RIVER PRAIRIE and does hereby dedicate to the public for public use the public ways and the drainage and utility easements as shown on this plat.

In witness whereof said RUM RIVER PRAIRIE, LLC, a Minnesota limited liability company, has caused these presents to be signed by its proper officer this \_\_\_\_\_ day of \_\_\_\_\_, 20\_\_\_\_.

RUM RIVER PRAIRIE, LLC

By Eric Thomsen as chief executive officer

State of Minnesota  
County of Isanti

This instrument was acknowledged before me on 6/8/18 by Eric Thomsen, as Chief Executive Officer of RUM RIVER PRAIRIE, LLC, a Minnesota limited liability company.

Ernest C Overby  
Notary Public, Isanti County, Minnesota  
My commission expires 1/31/21

I Kyle J. Roddy do hereby certify that this plat was prepared by me or under my direct supervision; that I am a duly Licensed Land Surveyor in the State of Minnesota; that this plat is a correct representation of the boundary survey; that all mathematical data and labels are correctly designated on this plat; that all monuments depicted on this plat have been, or will be correctly set within one year; that all water boundaries and wet lands, as defined in Minnesota Statutes, Section 505.01, Subd. 3, as of the date of this certificate are shown and labeled on this plat; and all public ways are shown and labeled on this plat.

Dated this 12<sup>th</sup> day of June, 2018

Kyle J. Roddy  
Kyle J. Roddy, Licensed Land Surveyor  
Minnesota License Number 42627

State of Minnesota  
County of Isanti

This instrument was acknowledged before me on 6/12/18 by Kyle J. Roddy.

Ernest C Overby  
Notary Public, Isanti County, Minnesota  
My commission expires 1/31/21

CITY COUNCIL, CITY OF RAMSEY, MINNESOTA

This plat of RUM RIVER PRAIRIE was approved and accepted by the City Council of the City of Ramsey, Minnesota at a regular meeting thereof held this 24<sup>th</sup> day of April, 2018 and said plat is in compliance with the provisions of Minnesota Statutes, Section 505.03, Subd. 2.

CITY COUNCIL, CITY OF RAMSEY, MINNESOTA

By [Signature] Acting Mayor  
By [Signature] City Clerk

ANOKA COUNTY SURVEYOR

I hereby certify that in accordance with Minnesota Statutes, Section 505.021, Subd. 11, this plat has been reviewed and approved this 15<sup>th</sup> day of June, 2018.

Charles F. Gitzen  
Charles F. Gitzen, Anoka County Surveyor

COUNTY AUDITOR/TREASURER

Pursuant to Minnesota Statutes, Section 505.021, Subd. 9, taxes payable in the year 2018 on the land hereinbefore described have been paid. Also, pursuant to Minnesota Statutes, Section 272.12, there are no delinquent taxes and transfer entered this 15<sup>th</sup> day of June, 2018.

Jonella Sawyer  
Property Tax Administrator  
By [Signature] Deputy

COUNTY RECORDER/REGISTRAR OF TITLES

County of Anoka, State of Minnesota

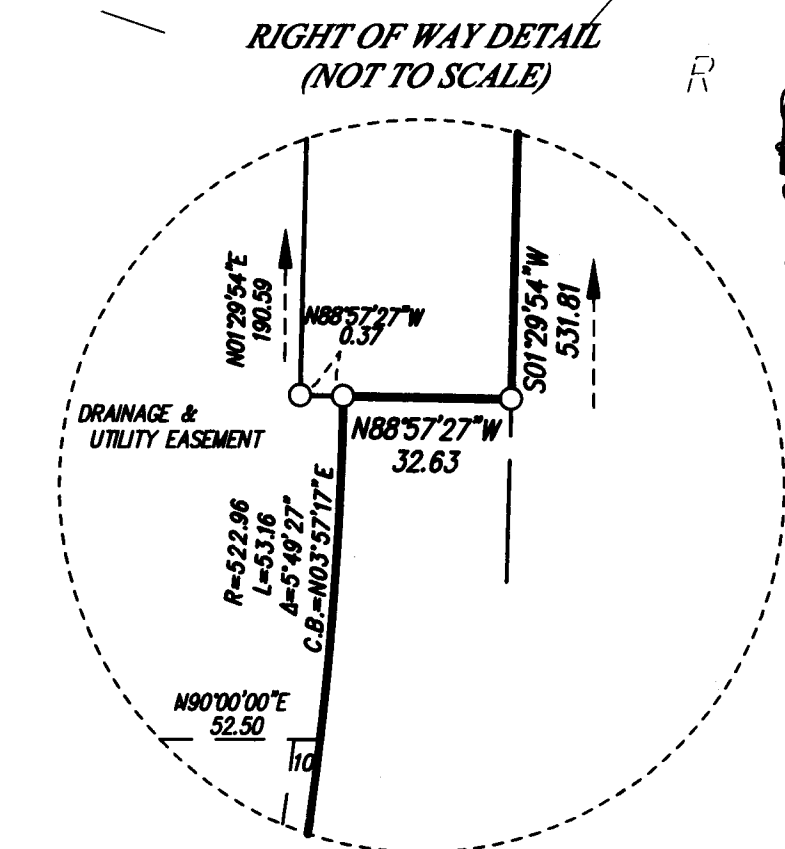
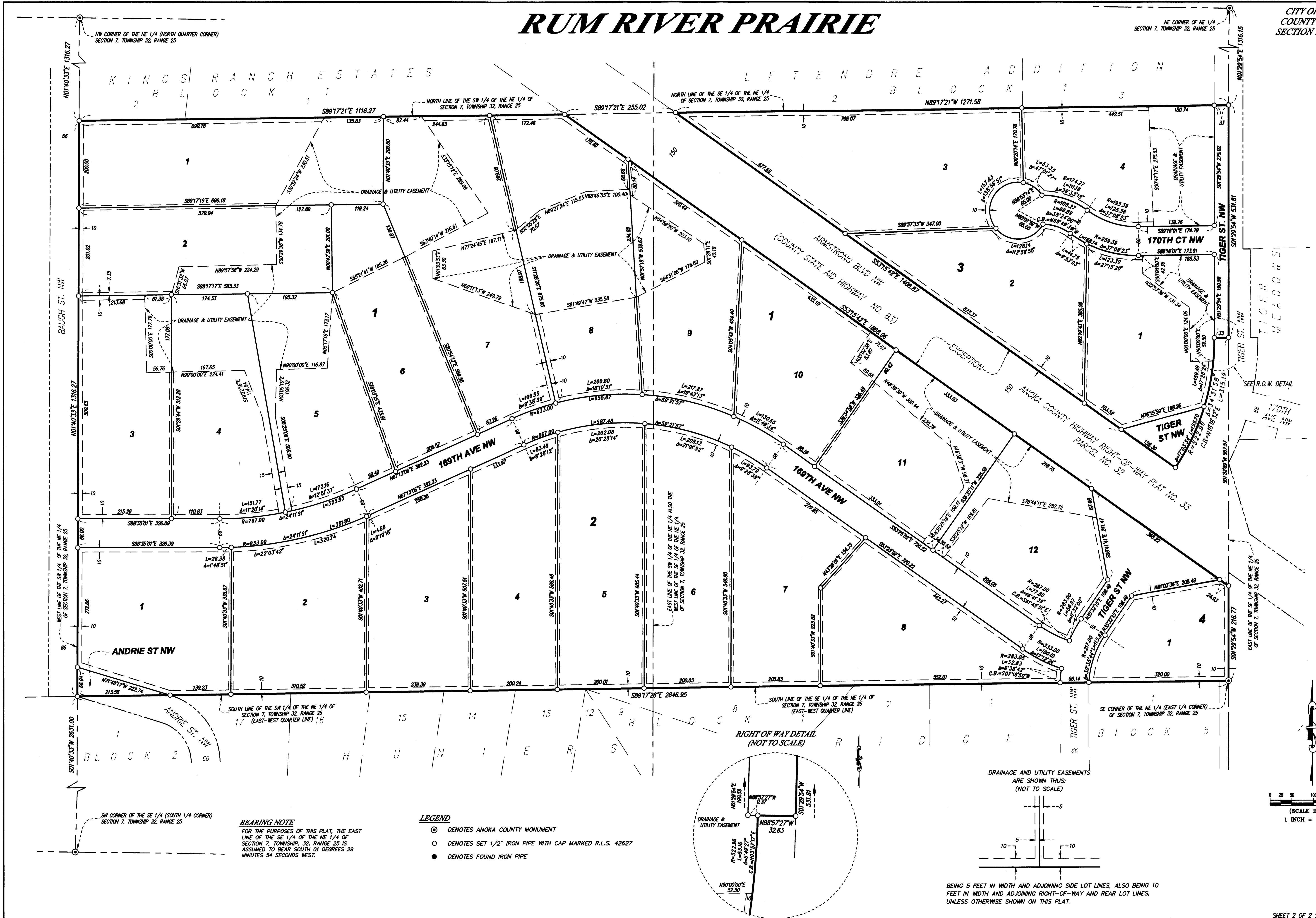
I hereby certify that this plat of RUM RIVER PRAIRIE was filed in the office of the County Recorder/Registrar of Titles for public record on this 15<sup>th</sup> day of June, 2018, at 3:00 o'clock P.M. and was duly recorded as Document Number 2201861.002.

Jonella Sawyer  
County Recorder/Registrar of Titles  
By [Signature] Deputy



# RUM RIVER PRAIRIE

CITY OF RAMSEY  
COUNTY OF ANOKA  
SECTION 7, T. 32, R. 25



BEING 5 FEET IN WIDTH AND ADJOINING SIDE LOT LINES, ALSO BEING 10 FEET IN WIDTH AND ADJOINING RIGHT-OF-WAY AND REAR LOT LINES, UNLESS OTHERWISE SHOWN ON THIS PLAT.

