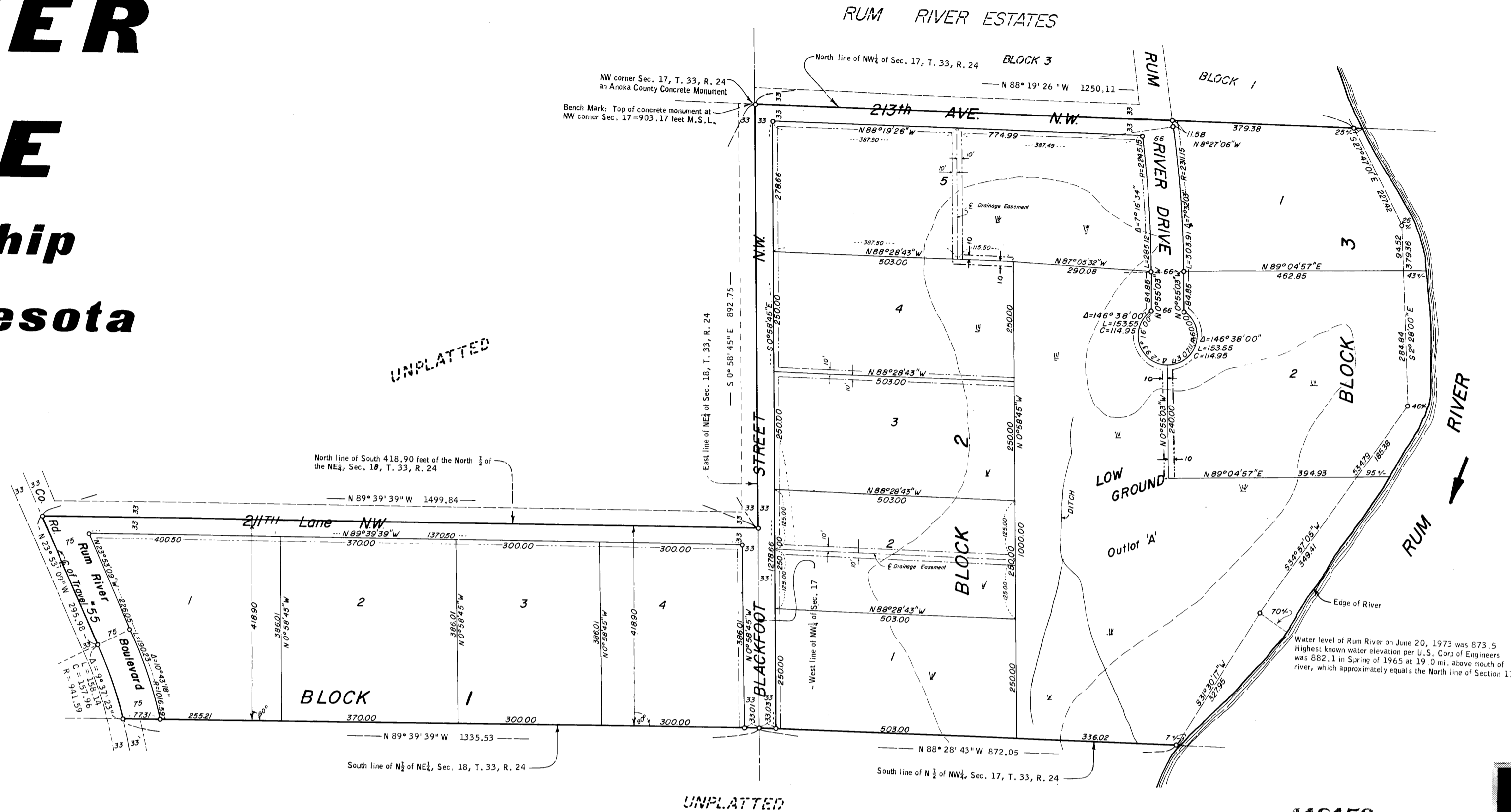
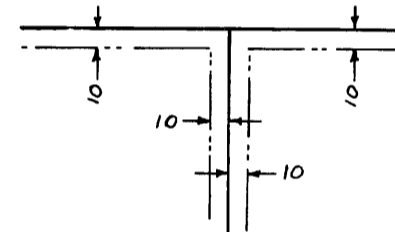


RUM RIVER PRESERVE

Oak Grove Township
Anoka County, Minnesota



Scale: 1 inch = 200 feet
O Denotes Iron Monument
Bearings are assumed
Denotes Drainage and Utility Easement



418156

OFFICE OF REGISTER OF DEEDS
STATE OF MINNESOTA, COUNTY OF ANOKA
I hereby certify that the within instrument was filed in this office for record on the day of July, 1974, A.D., at 4:15 o'clock P.M., and was duly recorded in book 12 of Plats, page 2.

Fred J. Oswald
Register of Deeds
By Margaret Russell Deputy

JOHN OLIVER & ASSOC. INC.
LAND SURVEYORS
Elk River, Minn.

KNOW ALL MEN BY THESE PRESENTS: That Wallace C. Sundberg, Jr. and Shirley J. Sundberg, husband and wife, owners and proprietors of the following described property situated in the State of Minnesota, County of Anoka to-wit:

That part of the North Half of the Northwest Quarter of Section 17, Township 33, Range 24 lying West of the Rum River. Together with that part of the South 418.90 feet of the Northeast Quarter of Section 18, Township 33, Range 24 lying Easterly of the center line of County Road No. 55. North Half of the

Have caused the same to be surveyed and platted as RUM RIVER PRESERVE, and do hereby donate and dedicate to the public for the public use forever the Boulevard, Road, Lane, Street, Avenue and Drive and the drainage and utility easements as shown on this plat. In witness whereof said Wallace C. Sundberg, Jr. and Shirley J. Sundberg have hereunto set their hands and seals this 29th day of July, 1974, A.D.

Signed: Wallace C. Sundberg, Jr. Wallace C. Sundberg, Jr. Shirley J. Sundberg Shirley J. Sundberg

State of Minnesota The foregoing instrument was acknowledged before me this 29 day of July, 1974, County of Anoka by Wallace C. Sundberg, Jr. and Shirley J. Sundberg, husband and wife.

John O. Oliver Notary Public, Anoka County, Minnesota

I hereby certify that I have surveyed and platted the property described in this plat as RUM RIVER PRESERVE and that this plat is a correct representation of said survey; that all monuments have been correctly placed in the ground as shown on the plat; that all distances are correctly shown on the plat in feet and hundredths of a foot; that the outside boundary lines are correctly designated on the plat; and that there are no wet lands or public highways to be designated on the plat other than as shown thereon.

John O. Oliver
John O. Oliver, Land Surveyor
Minnesota Registration No. 8194

"NO DELINQUENT TAXES AND TRANSFER ENTERED"

Oct. 25 1974
Charles R. Lefebvre
Auditor, Anoka County
BY Nonna C. Casper
Deputy

State of Minnesota
County of Sherburne

The surveyors certificate was subscribed and sworn to before me this 23rd day of July, 1974, A.D.



Notary Public, Sherburne County, Minnesota

Approved by the Town Board of the Township of Oak Grove, Anoka County, Minnesota this 30 day of Sept., 1974, A.D.

Signed: Ernst M. Knutson, Chairman Attest: Walter Z. Brzycki, Clerk

Checked and approved this 8th day of October, 1974, A.D.

Roland W. Anderson
Anoka County Surveyor

Recommended for approval this 9th day of October, 1974, A.D.

Paul K. Ruud
Anoka County Highway Engineer

This plat was approved as to form and execution this 25th day of OCTOBER, 1974, A.D.

Robert W. White Asst. Anoka County Attorney

This plat was approved and accepted by the Board of County Commissioners of the County of Anoka, State of Minnesota, at a regular meeting held this 8th day of OCTOBER, 1974, A.D.

Signed: Robert W. White, Chairman Attest: Charles R. Lefebvre, County Auditor