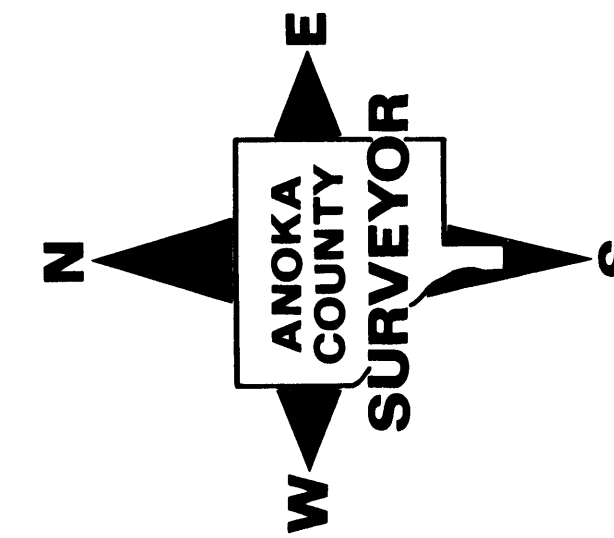
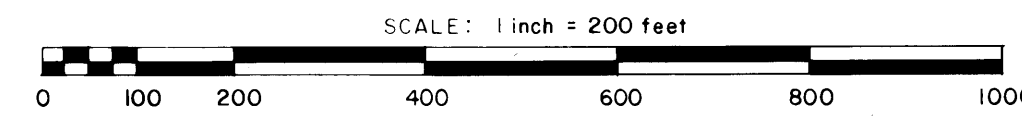


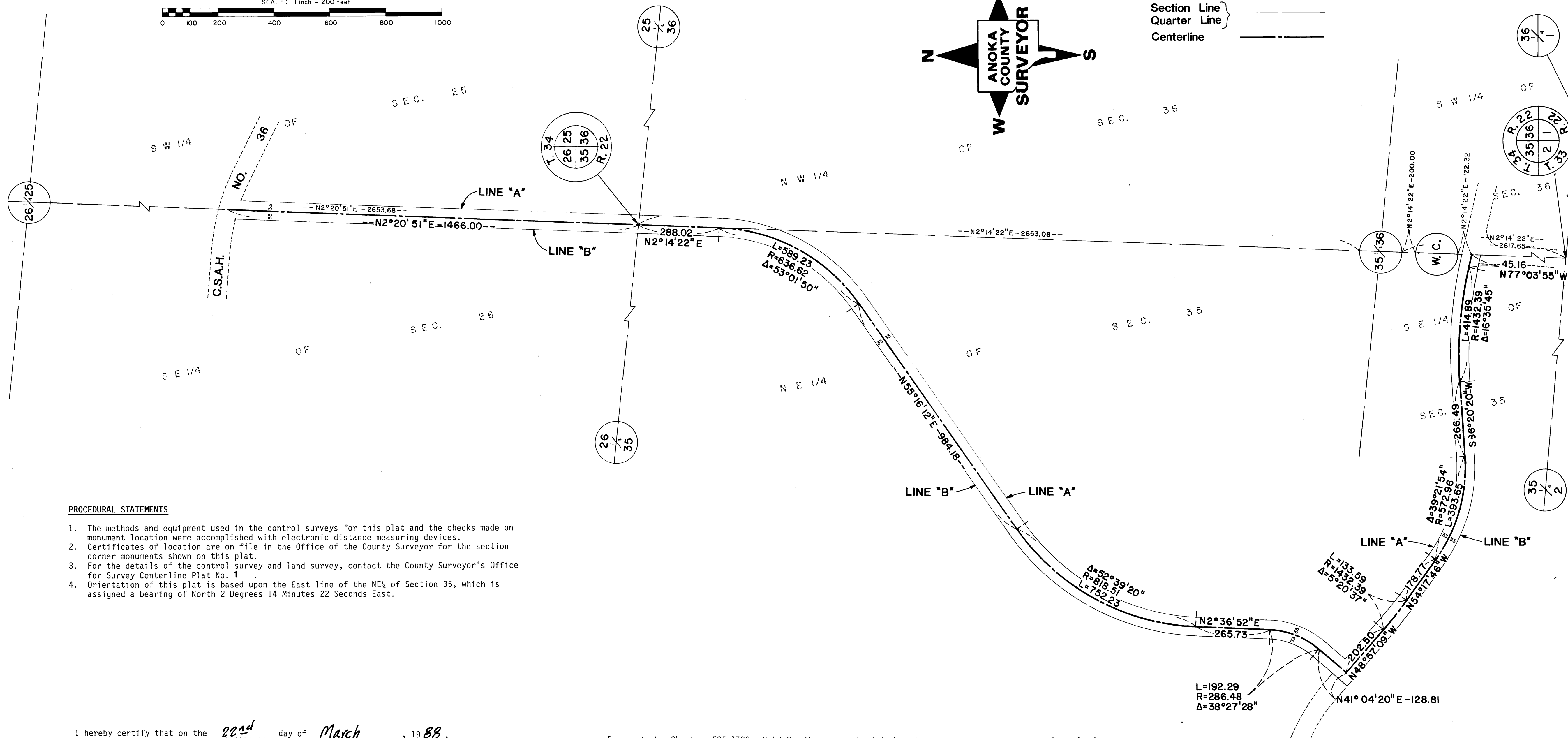
# ANOKA COUNTY HIGHWAY CENTERLINE PLAT NO. 1

## County Highway Supplemental Location Information (Anoka County Road No. 75)



### CONVENTIONAL SYMBOLS

Section Line } \_\_\_\_\_  
Quarter Line } \_\_\_\_\_  
Centerline } \_\_\_\_\_



### PROCEDURAL STATEMENTS

1. The methods and equipment used in the control surveys for this plat and the checks made on monument location were accomplished with electronic distance measuring devices.
2. Certificates of location are on file in the Office of the County Surveyor for the section corner monuments shown on this plat.
3. For the details of the control survey and land survey, contact the County Surveyor's Office for Survey Centerline Plat No. 1.
4. Orientation of this plat is based upon the East line of the NE $\frac{1}{4}$  of Section 35, which is assigned a bearing of North 2 Degrees 14 Minutes 22 Seconds East.

I hereby certify that on the 22<sup>nd</sup> day of March, 1988, the Board of Commissioners of Anoka County, Minnesota, passed Resolution Number 88-34 setting forth the need for the annexed plat and is in compliance with the provisions of Chapter 505.1792, Subd.1, Minnesota Statutes.

Signed Don E. Ehlert this 31<sup>st</sup> day of March, 1988.  
Chairman, Anoka County Board of Commissioners

Pursuant to Chapter 505.1792, Subd.2, the annexed plat has been approved this 31<sup>st</sup> day of March, 1988.

By Merlyn D. Anderson  
Anoka County Surveyor

802000

OFFICE OF COUNTY RECORDER  
STATE OF MINNESOTA, COUNTY OF ANOKA  
I hereby certify that the within instrument was filed in this office for record on the MAR 31, 1988 AD, 1988 at 4:15 o'clock P.M., and was duly recorded in Book 107 of ANOKA CO. HWY. CENTERLINE PLATS on page 1.  
Debra Omdahl  
County Recorder  
By A. D. [Signature]

173788

Office of the Registrar of Titles  
STATE OF MINNESOTA  
COUNTY OF ANOKA  
I hereby certify that the within instrument was filed in this office on the 31<sup>st</sup> day of March, 1988 at 4:15 P.M.  
Katherine Beier  
Registrar of Titles