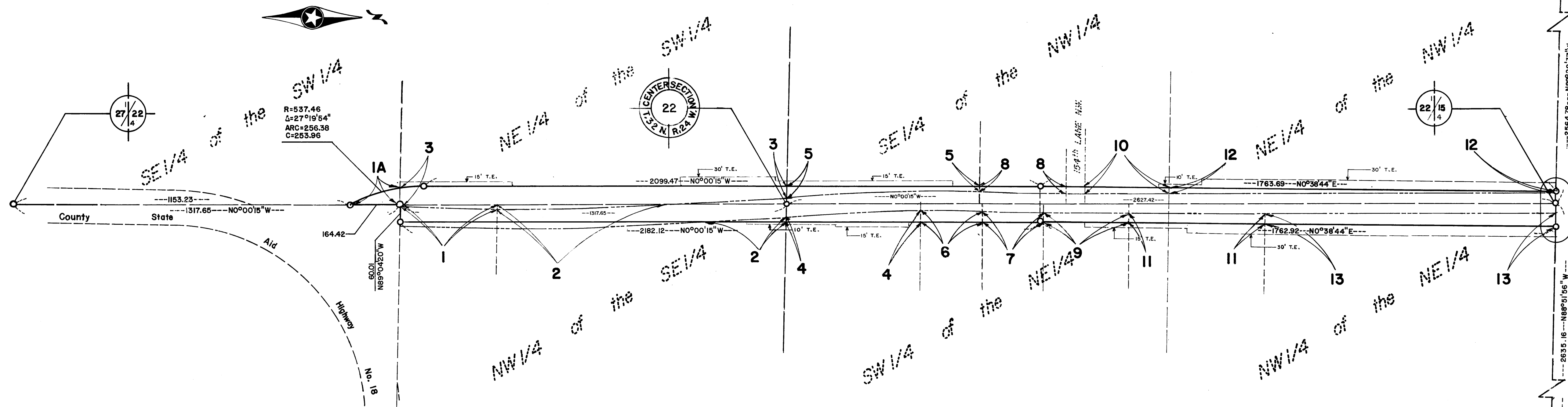
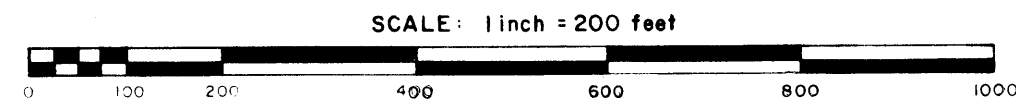


# ANOKA COUNTY HIGHWAY RIGHT-OF-WAY PLAT NO. 2

County Highway Project No. CP 74-05-109



See DETAIL - Sheet 2!

The Board of County Commissioners for Anoka County, Minnesota, pursuant to a Board Resolution dated 25, June 1974, is hereby designating the definite location of the Right of Way of County Highway No. 109, lying northerly of the northerly R/W line of County State Aid Highway No. 18, and southerly of the southerly R/W line of County State Aid Highway No. 20, in the Township of Grow.

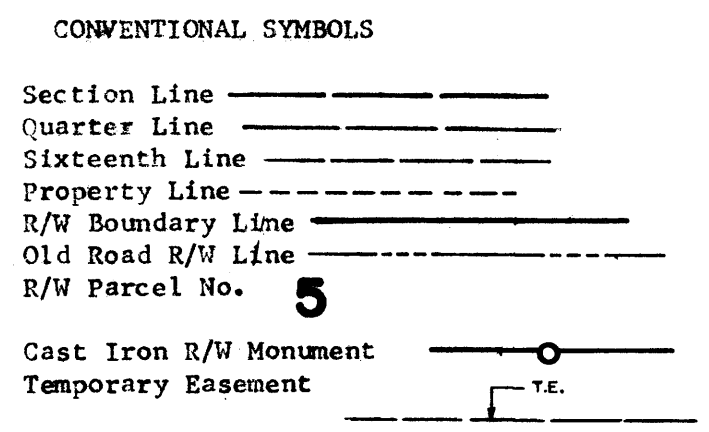
That portion of said highway located in Section 22 and the South one-half of Section 15, all in Township 32, Range 24, Anoka County, Minnesota as shown on this plat effected by the County of Anoka, Department of Highways, is hereby certified to be the official plat of that portion of said County Highway within said Sections pursuant to Minnesota Statutes 160.085.

Certified by: E. J. Lundheim, Reg. No. 2551 Date: July 29<sup>th</sup>, 1974.  
E. J. Lundheim  
County Highway Engineer

I hereby certify that this is a true and correct representation of a survey of the boundaries as shown, and that said survey was made under my direct supervision, that all distances are correctly shown in feet and decimals of a foot, that the monuments for the guidance of future surveys will be correctly placed in the ground as shown after completion of construction, and that there are no wetlands or public highways to be designated on said plat other than as shown thereon.

Roland W. Anderson, Reg. No. 5715 Date: July 29, 1974.  
Roland W. Anderson  
County Surveyor

RIGHT OF WAY IN SECTION 22												
PARCEL	OWNER	LOCATION	DEED RECORD		TORRENS CERTIFICATE NO.	ENTIRE TRACT acres	OTHER ROADS IN NEW R/W acres	NEW HIGHWAY RIGHT OF WAY acres	SCENIC EASEMENT acres	TEMPORARY EASEMENT acres	TEMP. EASE.. EXPIRES ON date	BALANCE OF TRACT REMAINING acres
			book	page								
1A	Katherine Laptuta	SE 1/4, SW 1/4	218	96		40.00		0.12				39.88
1	Stephen H. Thorson	Pt. NW 1/4, SE 1/4	1095	339		2.00		0.01				1.99
2	Steve Slyzak	Pt. NW 1/4, SE 1/4	197	148		30.00		0.22		0.03	Dec. 1, 1975	29.78
3	Mary Kozlowsky	NE 1/4, SW 1/4	167	425		40.00		1.62		0.30	Dec. 1, 1975	38.98
4	Pine Farms, Inc.	Pt. SW 1/4, NE 1/4	447	598		20.00		0.32		0.12		19.68
5	Richard J. Stewart	S 1/2, SE 1/4, NW 1/4	1030	11		20.00		0.35		0.19	Dec. 1, 1975	19.65
6	Lloyd C. Erickson	Pt. SW 1/4, NE 1/4	791	174		7.50		0.18				7.32
7	Curtis J. Steffensen	Pt. SW 1/4, NE 1/4	791	1		3.00		0.16				2.84
8	Timothy Tronson	Pt. SE 1/4, NW 1/4	1032	313		1.83		0.14				1.69
9	Pine Farms, Inc.	Pt. SW 1/4, NE 1/4	791	1		27.00		0.21		0.05	Dec. 1, 1975	26.79
10	Kenneth P. Olson	Pt. SE 1/4, NW 1/4	540	391		9.52		0.13		0.01	Dec. 1, 1975	9.39
11	Pine Farms, Inc.	Pts. NW 1/4, NE 1/4 & SW 1/4, NE 1/4	775	439		15.18		0.35		0.30	Dec. 1, 1975	14.83
12	Ed Herman & Sons, a Co-partnership	NE 1/4, NW 1/4	958	255		40.00		0.36		0.85	Dec. 1, 1975	39.64
13	Margaret A. Collins	Pt. N 1/2, NE 1/4	793	113		60.00		0.91		0.68	Dec. 1, 1975	59.09

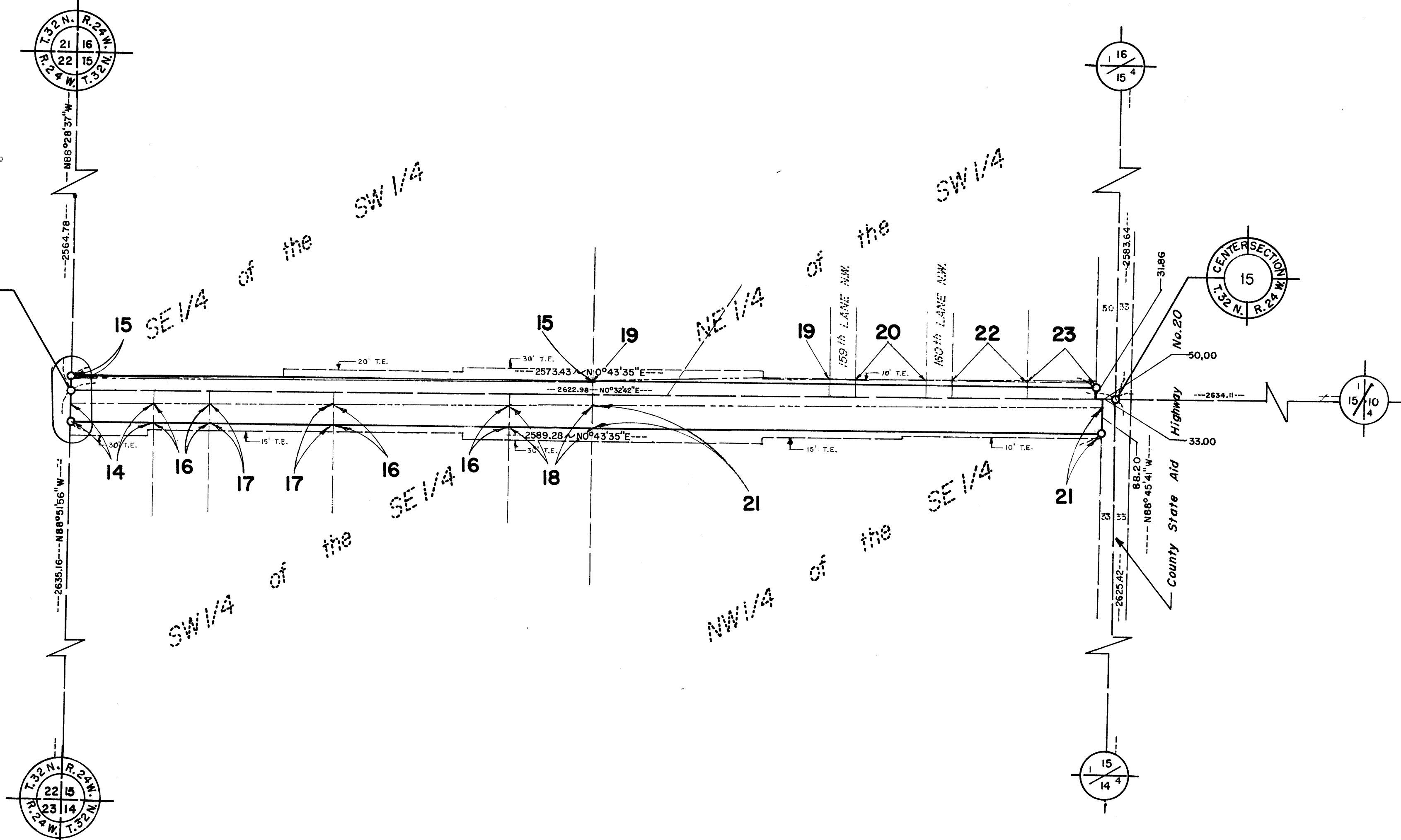
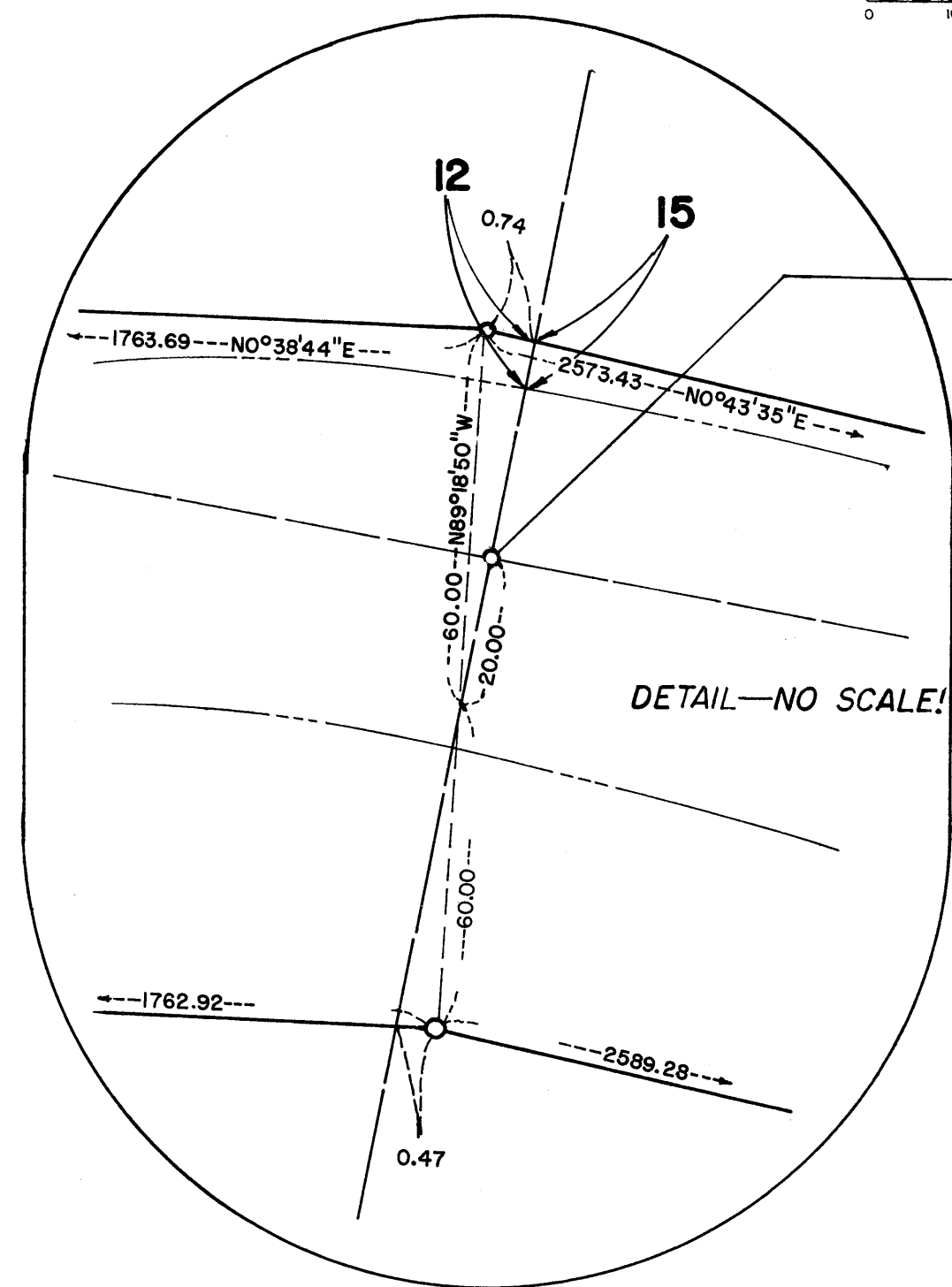
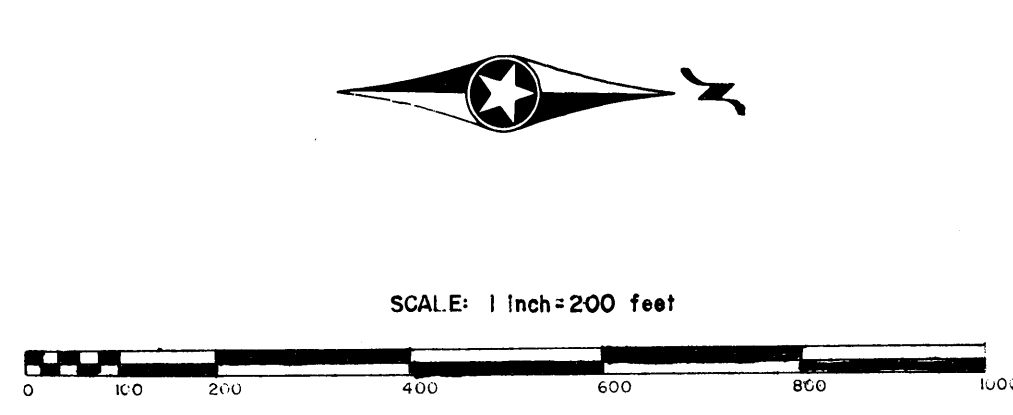


**413915**  
OFFICE OF REGISTER OF DEEDS  
STATE OF MINNESOTA, COUNTY OF ANOKA }  
I hereby certify that the within instrument was filed in this office for record on the day of JUL 29 1974 A.D., 195... at 3:15 o'clock P.M., and was duly recorded in book PLAT BOOK 1, page 2.  
Fred J. Omdahl  
By Margaret Collins  
Capacity

- PROCEDURAL STATEMENTS
- The methods and equipment used in the control surveys for this plat and the checks made on monument location were accomplished with electronic measuring devices.
  - Certificates of location are on file in the Office of the County Surveyor for the section corner monuments shown on this plat.
  - For details of the control survey and land survey, contact the County Surveyor's Office for survey of R/W Plat No. 2, County Project No. CP 74-05-109.
  - Bearings shown are assumed.

# ANOKA COUNTY HIGHWAY RIGHT-OF-WAY PLAT NO. 2

County Highway Project No. CP 74-05-109



RIGHT OF WAY IN SECTION 15												
PARCEL	OWNER	LOCATION	DEED RECORD		TORRENS CERTIFICATE NO.	ENTIRE TRACT acres	OTHER ROADS IN NEW R/W acres	NEW HIGHWAY RIGHT OF WAY acres	SCENIC PAVEMENT acres	TEMPORARY EASEMENT acres	TEMP. EASE. EXPIRES ON date	BALANCE OF TRACT REMAINING acres
			book	page								
14	Kirk R. Bloomstrom	Pt. SW 1/4, SE 1/4	1062	630		2.00		0.22		0.14	Dec. 1, 1975	1.78
15	Harvey G. Ward	SE 1/4, SW 1/4	592	320		40.00		0.10		0.43	Dec. 1, 1975	39.90
16	Louis Sonterre	Pt. SW 1/4, SE 1/4	197	168		30.29		0.68		0.24	Dec. 1, 1975	29.61
17	J. Builders, Inc.	Pt. SW 1/4, SE 1/4	1059	37		5.23		0.35		0.11	Dec. 1, 1975	4.88
18	Robert J. Huss	Pt. SW 1/4, SE 1/4	947	595		2.48		0.26		0.14	Dec. 1, 1975	2.22
19	Gerald A. Ryding	Pt. NE 1/4, SW 1/4	796	263	806	521	6.62			0.30	Dec. 1, 1975	6.62
20	Einar G. Jorgenson	Pt. NE 1/4, SW 1/4	820	31		0.86				0.03	Dec. 1, 1975	0.86
21	Lester C. Palmer	Pt. NW 1/4, SE 1/4	590	125		38.50		1.79		0.53	Dec. 1, 1975	36.71
22	Richard C. Snyder	Pt. NE 1/4, SW 1/4	946	545		0.91				0.02	Dec. 1, 1975	0.91
23	Twin City Federal	Pt. NE 1/4, SW 1/4	738	459		0.91				0.02	Dec. 1, 1975	0.91