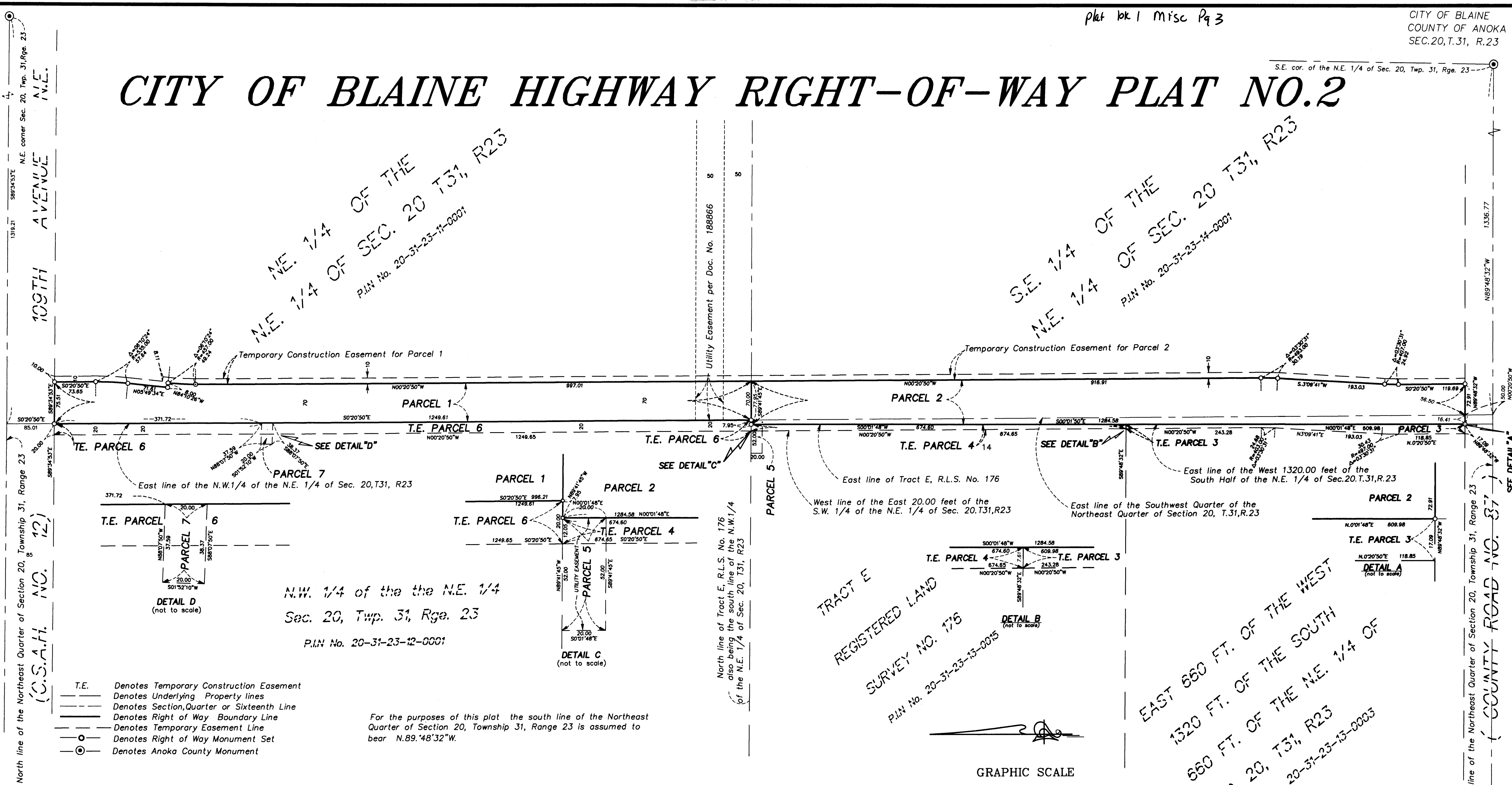


CITY OF BLAINE HIGHWAY RIGHT-OF-WAY PLAT NO. 2

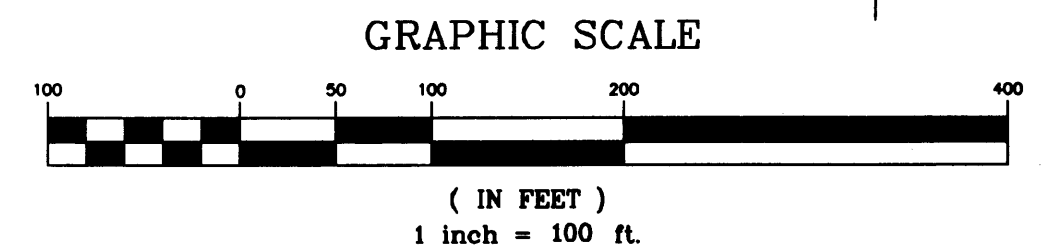


- T.E. Denotes Temporary Construction Easement
- Denotes Underlying Property lines
- Denotes Section, Quarter or Sixteenth Line
- Denotes Right of Way Boundary Line
- Denotes Temporary Easement Line
- Denotes Right of Way Monument Set
- ⊙ Denotes Anoka County Monument

N.W. 1/4 of the the N.E. 1/4
Sec. 20, Twp. 31, Rge. 23
P.L.N. No. 20-31-23-12-0001

For the purposes of this plat the south line of the Northeast Quarter of Section 20, Township 31, Range 23 is assumed to bear N.89.48°32'W.

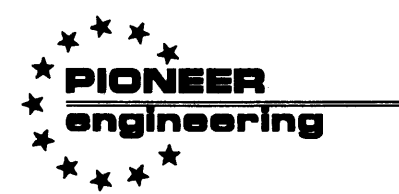
PARCEL	OWNER	LOCATION: BY PARCEL IDENTIFICATION NUMBER (P.I.N.)	DEED RECORD DOCUMENT NUMBER	TORRENS CERTIFICATE NUMBER	NEW HIGHWAY RIGHT OF WAY ACRES	TEMPORARY EASEMENT ACRES	UTILITY EASEMENT ACRES	TEMP. EASE. EXPIRES ON DATE
1	Minnesota Amateur Sports Commission	20-31-23-11-0001		81338	2.02Acres	0.29Acres		31ST DEC. 2001
2	State of Minnesota	20-31-23-14-0001		71429	2.35Acres	0.29 Acres		31ST DEC. 2001
3	Knutson Construction Company	20-31-23-13-0003		57559		0.15 acres		31ST DEC. 2001
4	Paul J. Vincent	20-31-23-13-0015		81942		0.15 acres		31ST DEC. 2001
5	Paul J. Vincent	20-31-23-13-0015		81942			0.02 acres	
6	Cinco Development, Inc.	20-31-23-12-0001		75752		0.57 acres		31ST DEC. 2001
7	Cinco Development, Inc.	20-31-23-12-0001		75752			0.017 acres	



I, hereby certify that this is a true and correct representation of a survey of the boundaries as shown and that said survey was made under my direct supervision; that all distances are correctly shown in feet and decimals of a foot; that the monuments for the guidance of future surveys will be correctly placed in the ground as shown after completion of construction; the Right of Way boundary lines are designated on the plat and it was prepared pursuant to Chapter 505.1793, Minnesota Statutes.

Robert B. Schul This 1st day of August A.D. 2000.

That the portion of Davenport Street Northeast located in Section 20, Township 31, Range 23, as shown on this plat effected by the City of Blaine, is certified to be the official plat of that portion of said street within said section pursuant to Minnesota Statutes 505.1793. The foregoing plat was accepted and approved by the City Council of Blaine, Minnesota, at a regular meeting thereof held this 1st day of August, A.D. 2001.



2422 Enterprise Drive
Mendota Heights, MN 55120
(651) 681-1914 FAX: 681-9488
625 Highway 10 N.E.
Blaine, MN 55434
(612) 783-1880 FAX: 783-1883

366247
Office of REGISTRAR OF TITLES
STATE OF MINNESOTA
COUNTY OF ANOKA
I hereby certify that the within instrument was filed in this office on Feb 07 2001 at 2:15 o'clock P.M.
Maureen J. Devine, Registrar of Titles
By *Alge* Deputy Registrar of Titles

CITY OF BLAINE, MINNESOTA
By *Tom Ryan* Mayor

By *Paul M. Hall* Clerk

Checked and approved this day of Feb 2001 A.D.
Larry D. Hovine by *John J. Hovine* Deputy
Anoka County Surveyor